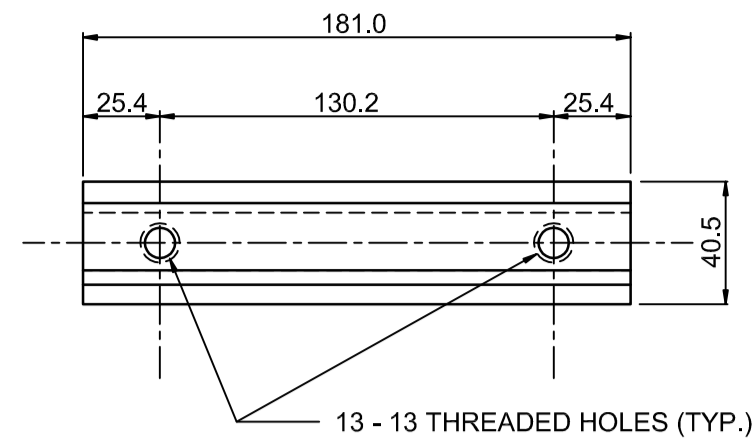


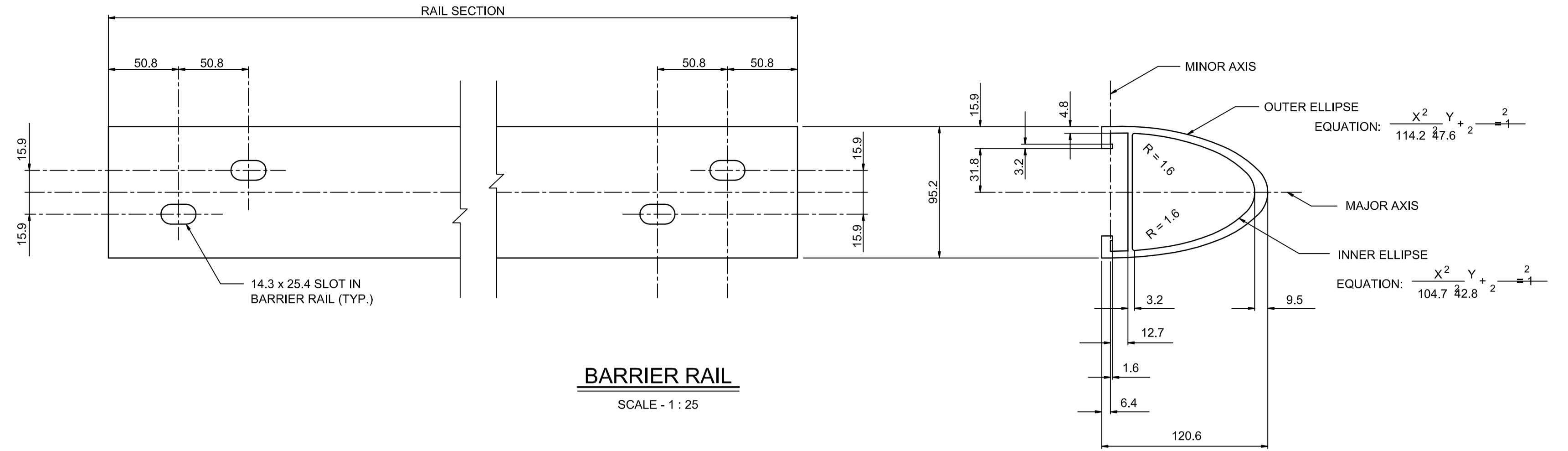
RAIL CLAMP BAR

SCALE - 1 : 25



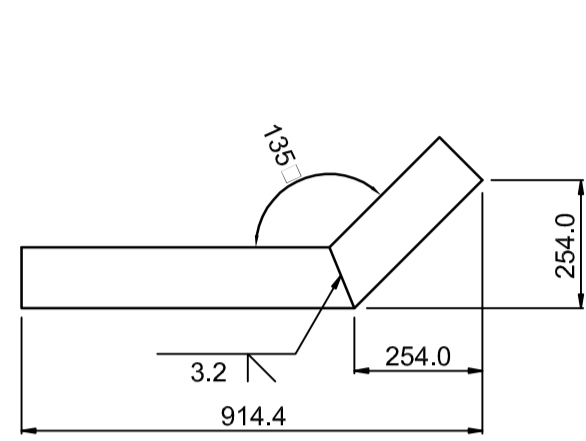
RAIL CLAMP BAR

SCALE - 1 : 25



BARRIER RAIL

SCALE - 1 : 25



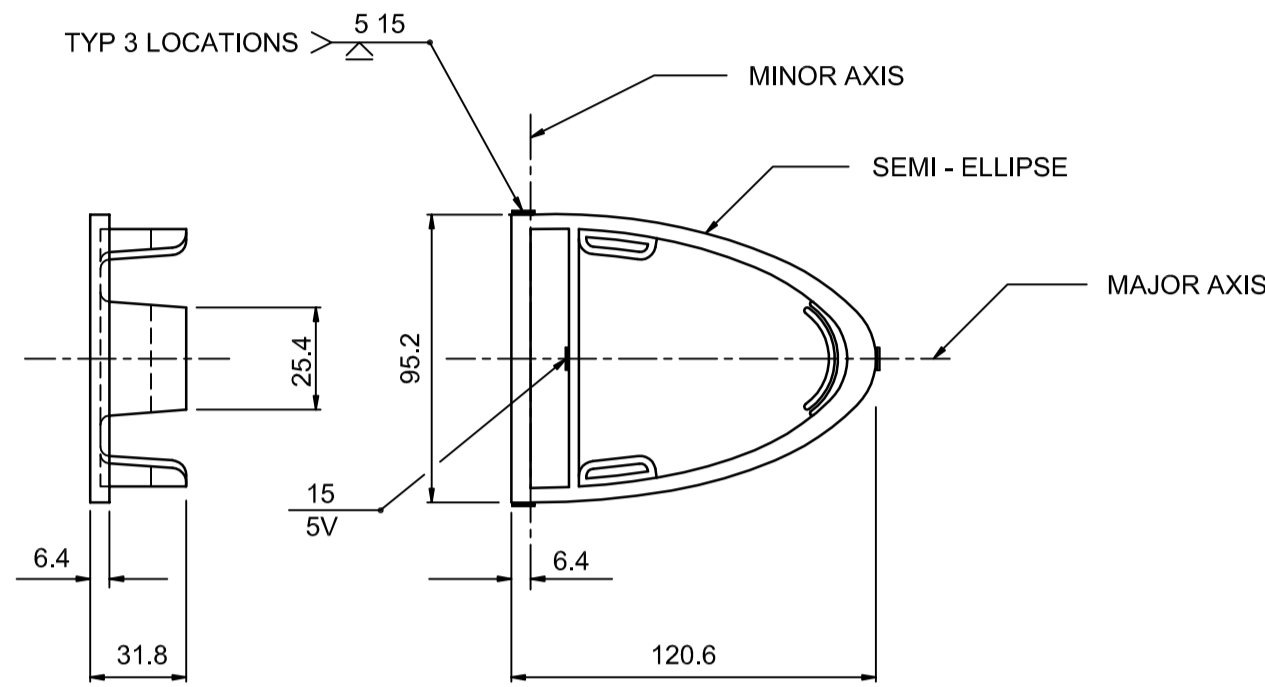
PLAN



FRONT ELEVATION

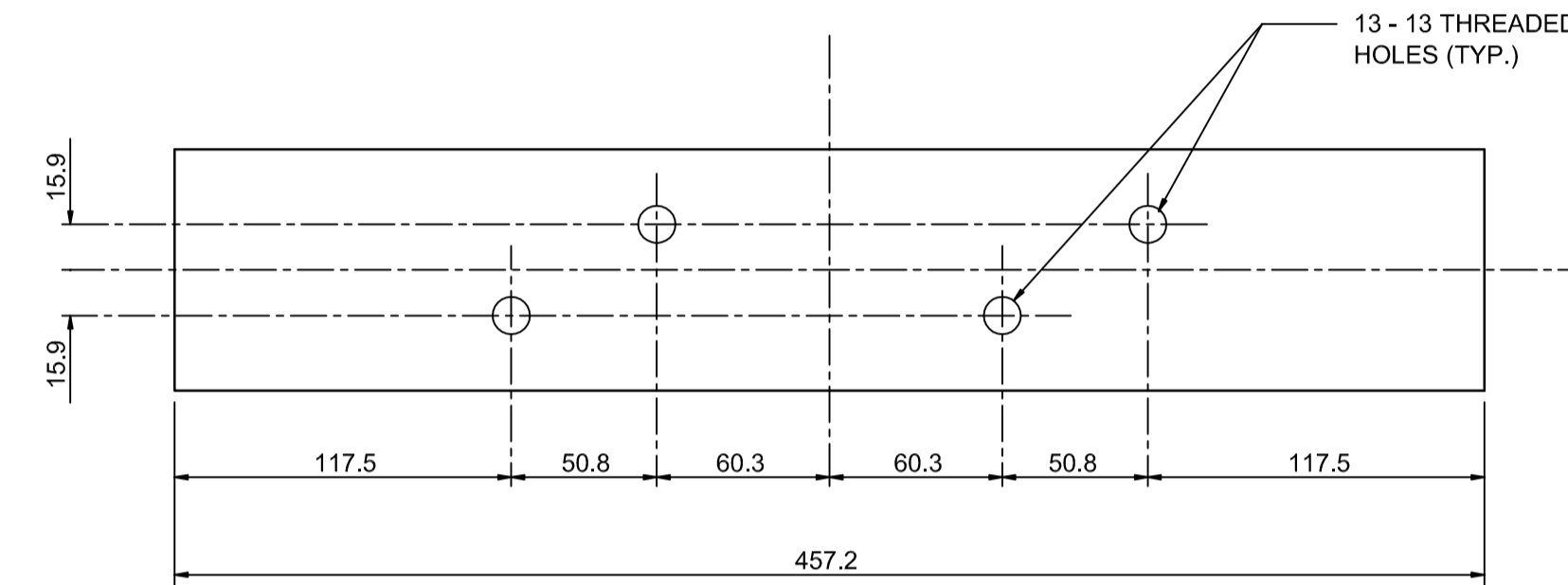
TERMINAL END

(FABRICATED FROM BARRIER RAIL)
SCALE - 1 : 150



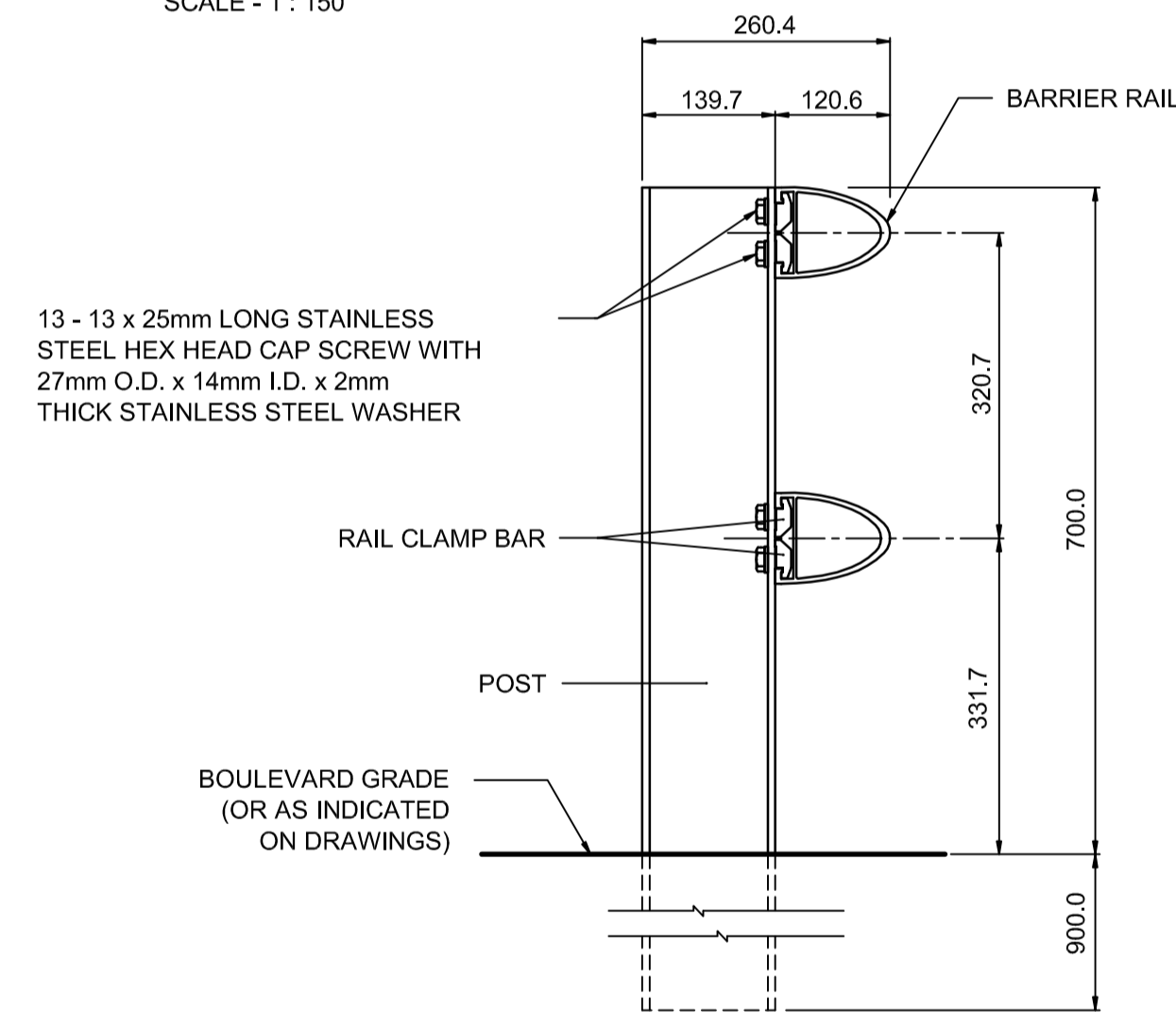
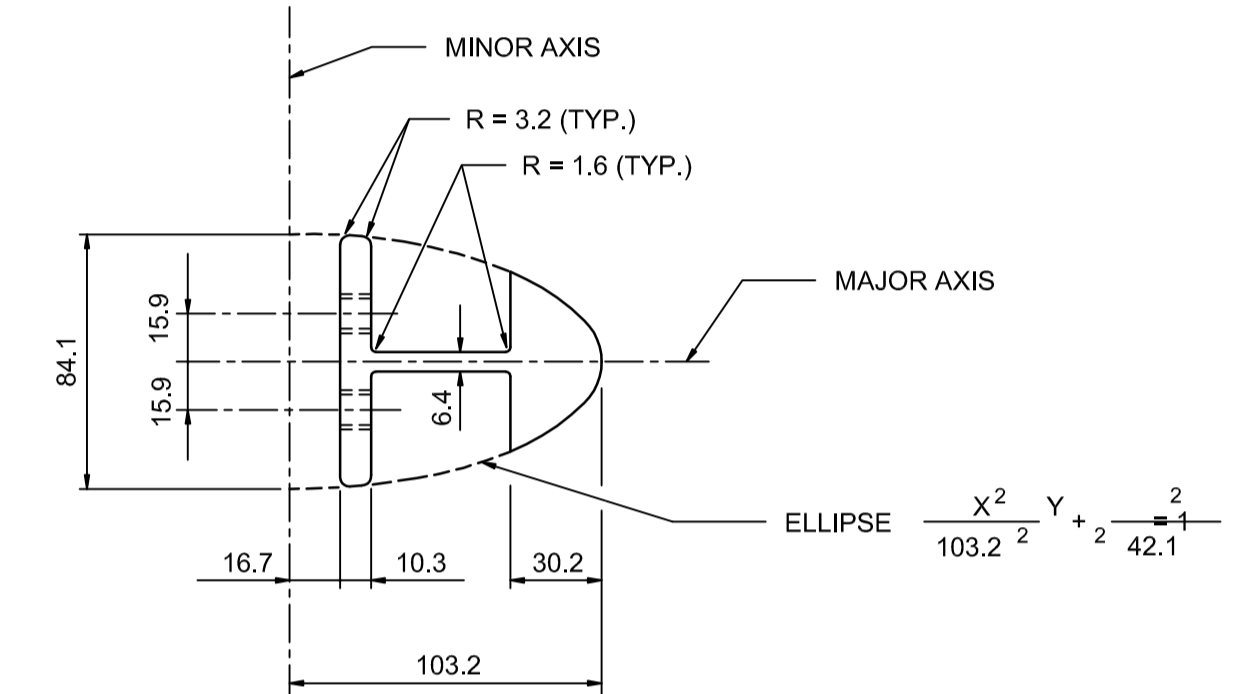
RAIL END CAP

SCALE - 1 : 25



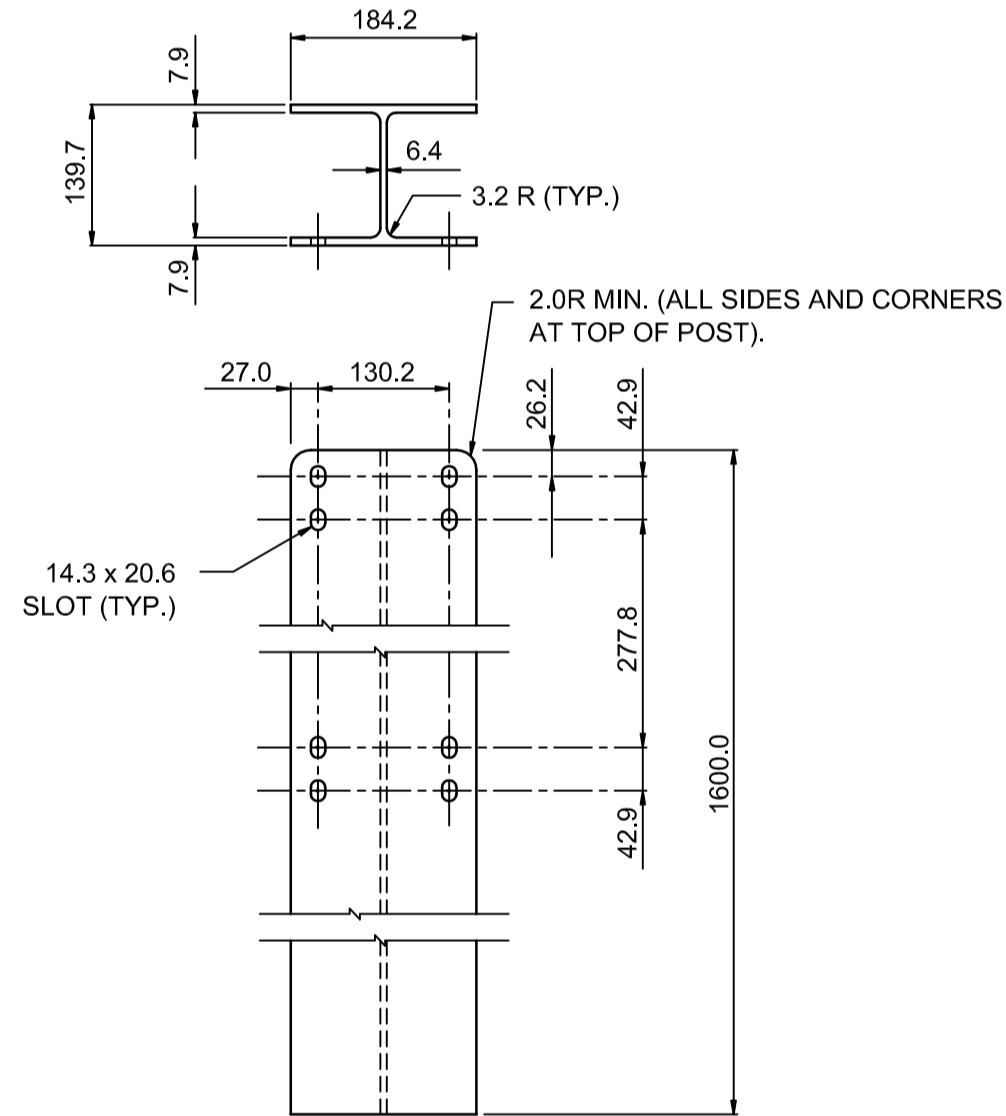
SPLICE BAR

SCALE - 1 : 25



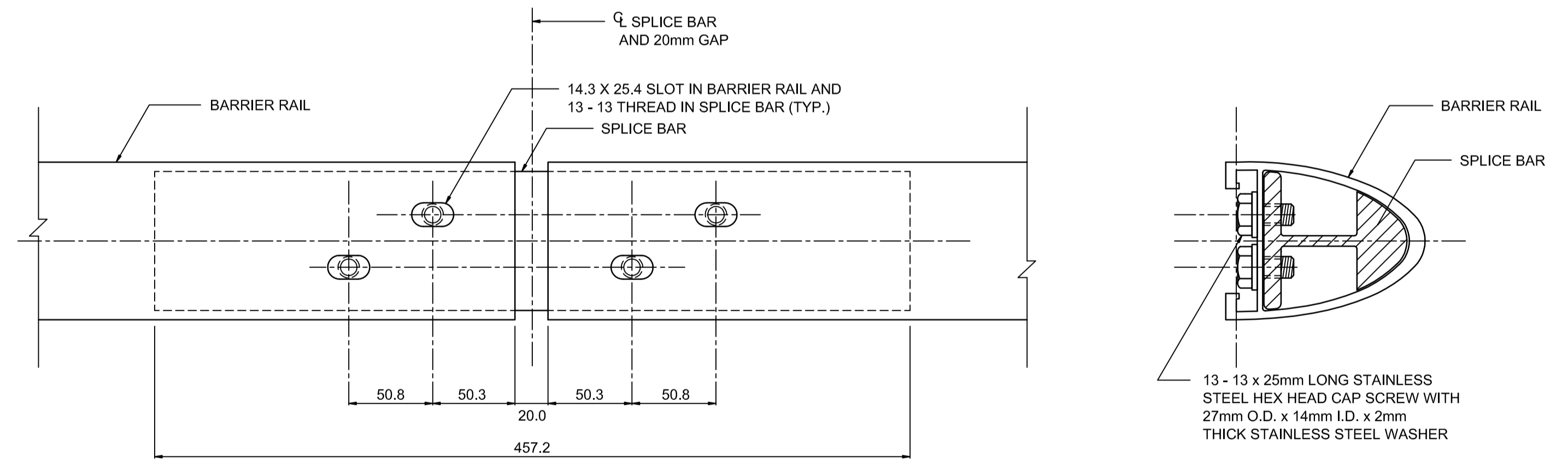
RAIL TO POST ASSEMBLY DETAIL

SCALE - 1 : 75



1.600m POST

(0.800m POST SIMILAR EXCEPT WITH ONLY FOUR SLOTS AT TOP OF POST)
SCALE - 1 : 75



SPLICE BAR TO RAIL ASSEMBLY DETAIL

SCALE - 1 : 25

MATERIAL SPECIFICATION

1. ALUMINUM RAILS, POSTS, SPLICE BARS, AND RAIL END CAPS SHALL CONFORM TO ASTM B221, ALLOY 6061 - T6, OR ALLOY 6351 - T6.
2. TYPE 316, STAINLESS STEEL WASHERS SHALL CONFORM TO ASTM A296, TYPE 316.
3. CAP SCREWS SHALL CONFORM TO ASTM A276, TYPE 316 STAINLESS STEEL.
4. ANTI-SEIZE COATING TO BE APPLIED TO ALL THREADED COMPONENTS WHEN BEING ASSEMBLED, i.e. LPS-3-MANUFACTURED BY HOLT LLOYD (CANADA) LTD., MARKHAM, ONTARIO L3R 2Z3
5. TWO COATS, EACH 1mm IN THICKNESS OF ALKALI-RESISTANT BITUMINOUS PAINT SHALL BE APPLIED ON THE SURFACES OF POSTS AND RAILS THAT ARE TO BE IN CONTACT WITH THE GROUND.

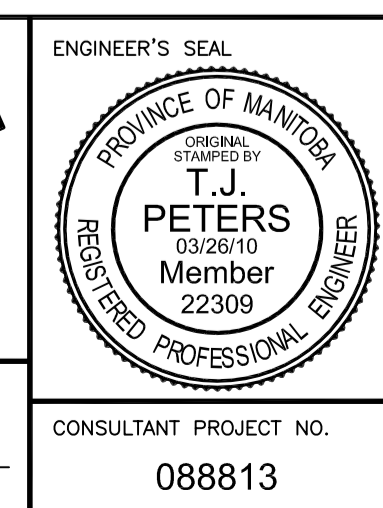
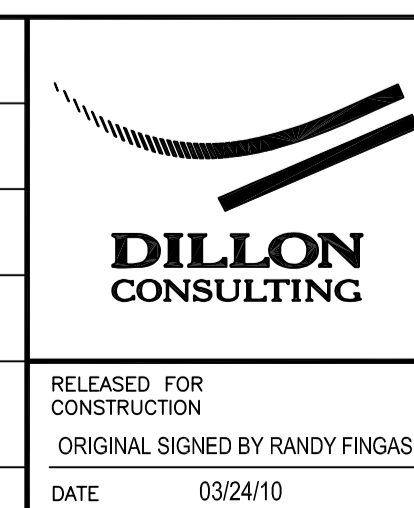
METRIC

ALL DIMENSIONS SHOWN ARE IN MILLIMETRES



LOCATION UNDERGROUND	APPROVED STRUCTURES	B.M. ELEV.	DESIGNED BY
SUPY. U/G STRUCTURES COMMITTEE <td>DATE <td></td> <td></td> </td>	DATE <td></td> <td></td>		
NOTE: LOCATION OF UNDERGROUND STRUCTURES AS SHOWN ARE BASED ON THE BEST INFORMATION AVAILABLE, BUT NO GUARANTEE IS GIVEN THAT ALL EXISTING UTILITIES ARE SHOWN OR THAT THE GIVEN LOCATIONS ARE EXACT. CONFIRMATION OF EXISTENCE AND EXACT LOCATION OF ALL SERVICES MUST BE OBTAINED FROM THE INDIVIDUAL UTILITIES BEFORE PROCEEDING WITH CONSTRUCTION.			
2	ISSUED FOR TENDER	03/26/10	TJP
1	ISSUED FOR 75% REVIEW	03/03/10	TJP
NO.	REVISIONS	DATE	BY

DESIGNED BY	DRAWN BY	CHECKED BY	APPROVED BY	HOR. SCALE	VERTICAL
		ORIGINAL SIGNED BY TARAN J. PETERS	ORIGINAL SIGNED BY DAVE P. KRAHN	AS NOTED	AS NOTED
DATE	03/26/10	DATE	03/26/10		



THE CITY OF WINNIPEG
TRANSIT DEPARTMENT

SOUTHWEST RAPID TRANSIT CORRIDOR - STAGE 1
TRANSITWAY CONSTRUCTION, LANDSCAPING & ASSOCIATED WORKS

CITY DRAWING NUMBER: P-3317-61
SHEET 61 OF 72
CONSULTANT DRAWING NUMBER: C6-C3051-T

CONSULTANT PROJECT NO.: 088813

RELEASED FOR CONSTRUCTION
ORIGINAL SIGNED BY RANDY FINGAS
DATE: 03/24/10

G:\CAD\088813\Contract\Contract_6-Busway\Current\Roadway\C6-Guard-Rail-Standard_Details.dwg