

# **APPENDIX 'A'**

# **GEOTECHNICAL REPORT**

## APPENDIX 'A' - GEOTECHNICAL REPORT

### TABLE OF CONTENTS

<b>GEOTECHNICAL REPORT FOR SOUTHWEST RAPID TRANSIT CORRIDOR – STAGE 1: TRANSITWAY CONSTRUCTION, LANDSCAPING &amp; ASSOCIATED WORKS</b>	<b>1</b>
Test Hole Locations	1
Summary of Core Samples	3
Test Hole Log for 2008-1	4
Test Hole Log for 2008-2	5
Test Hole Log for 2008-3	6
Test Hole Log for 2008-4	7
Test Hole Log for 2008-5	8
Test Hole Log for 2008-6	9

The geotechnical report is provided to aid in the Contractor's evaluation of the existing pavement structure and/or soil conditions. The information presented is considered accurate at the locations shown on the Drawings and at the time of drilling. However, variations in pavement structure and/or soil conditions may exist between test holes and fluctuations in groundwater levels can be expected seasonally and may occur as a result of construction activities. The nature and extent of variations may not become evident until construction commences.

## Geotechnical Report for Southwest Rapid Transit Corridor – Stage 1: Transitway Construction, Landscaping & Associated Works

### Test Hole Locations





**Summary of Core Samples**

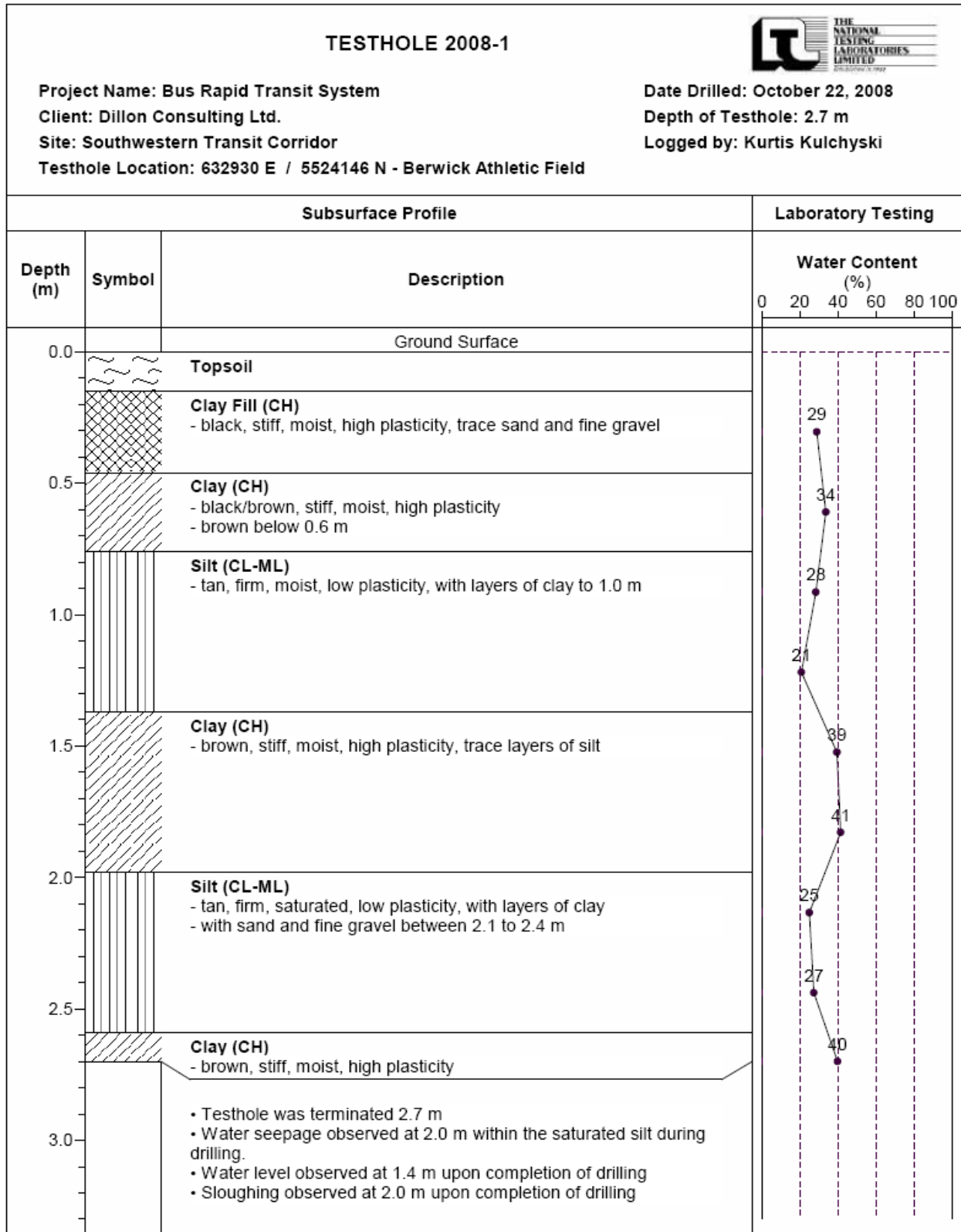
**TABLE 1  
 TESTHOLE LOCATIONS  
 BUS RAPID TRANSIT SYSTEM  
 SOUTHWESTERN TRANSIT CORRIDOR**

Testhole ID	UTM Co-ordinate	General Description
2008-1	632930 E / 5524146 N	Berwick Athletic Field (West side of Soccer Field)
2008-2	633076 E / 5524483 N	CNR Fort Rouge Yards
2008-3	633140 E / 5524665 N	CNR Fort Rouge Yards
2008-4	633207 E / 5524857 N	CNR Fort Rouge Yards
2008-5	633276 E / 5525020 N	CNR Fort Rouge Yards
2008-6	633471 E / 5525490 N	CNR Fort Rouge Yards

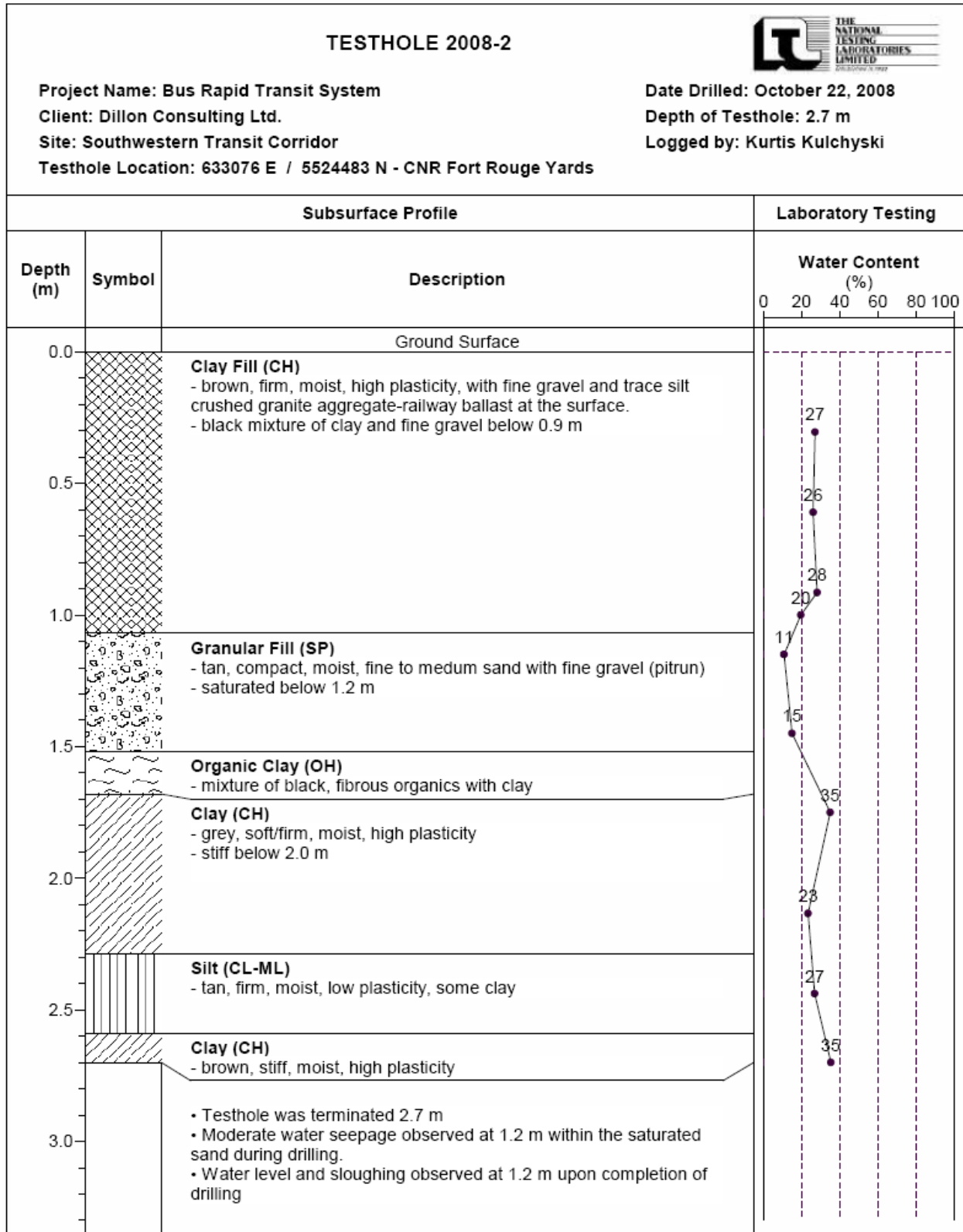
**TABLE 3  
 SOILS TEST DATA  
 BUS RAPID TRANSIT SYSTEM  
 SOUTHWESTERN TRANSIT CORRIDOR**

Testhole ID	Sample Depth (m)	Sample Description	Moisture Content (%)	Particle Size Analysis				Atterberg Limits		
				Gravel (%)	Sand (%)	Silt (%)	Clay (%)	Liquid Limit	Plastic Limit	Plasticity Index
2008-5	0.9	Granular Fill (SM)	18	0	88.0	8.5	3.5	-	-	-
2008-6	1.5	Silt (CL-ML)	16	-	-	-	-	26	19	7

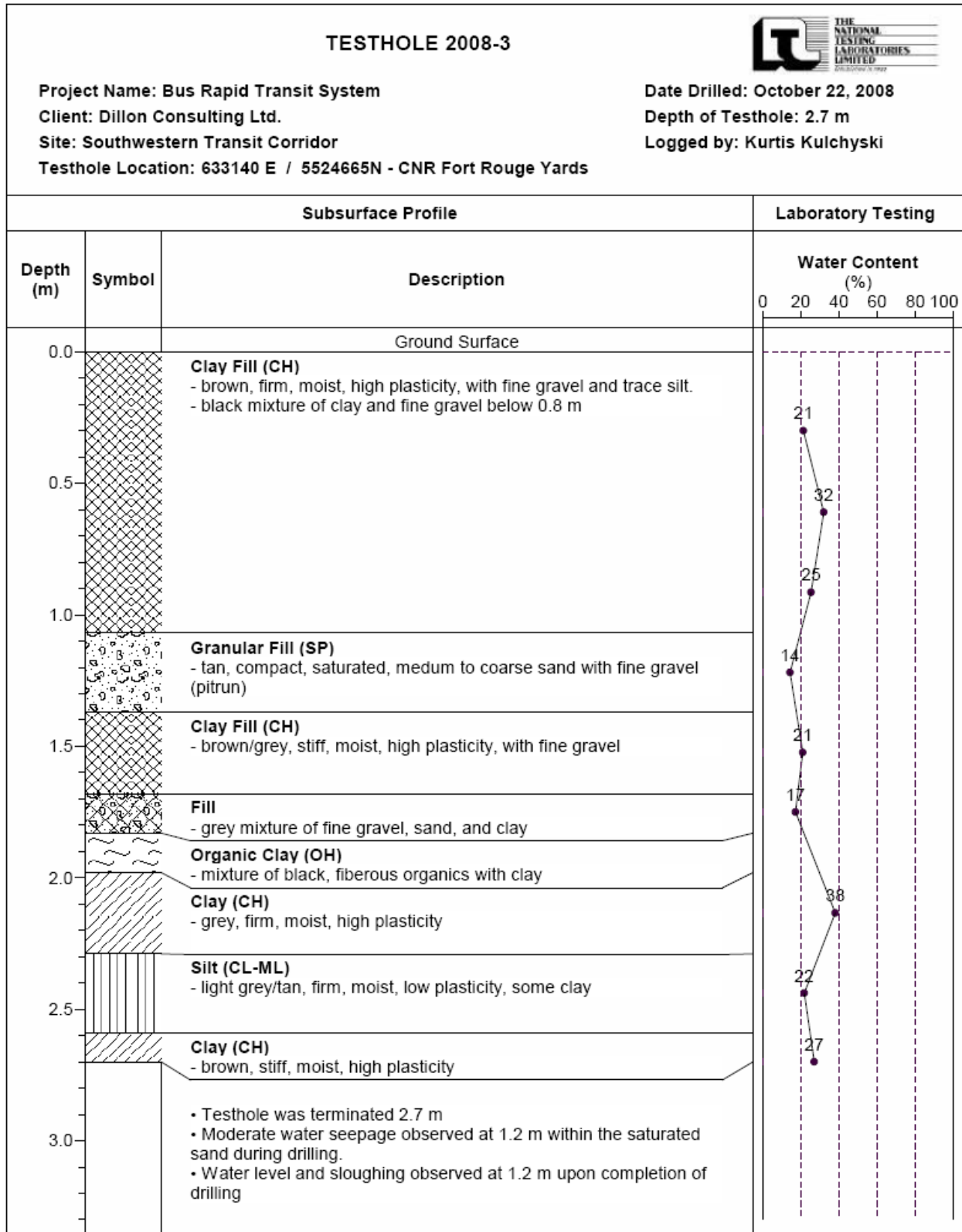
**Test Hole Log for 2008-1**



**Test Hole Log for 2008-2**

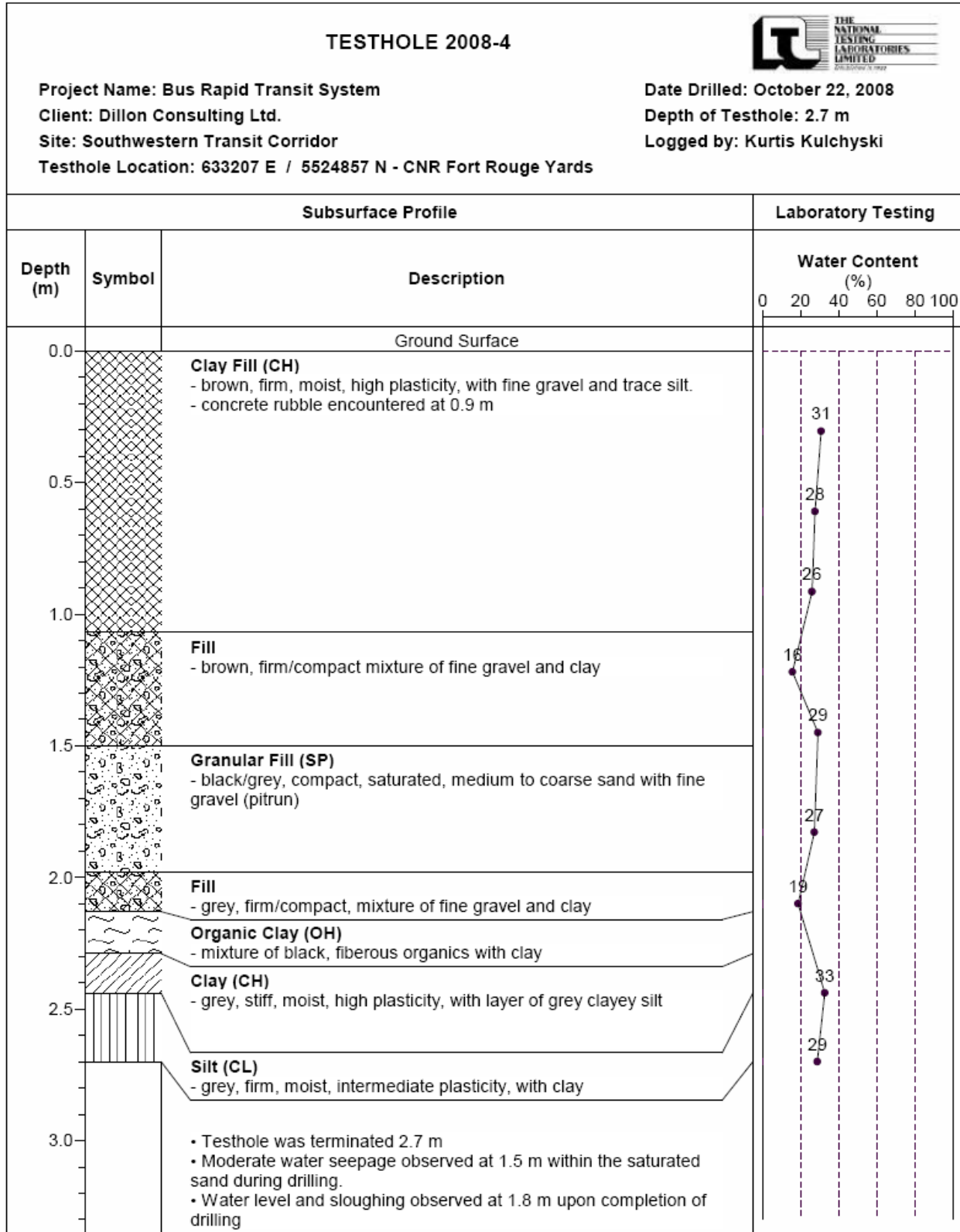


**Test Hole Log for 2008-3**

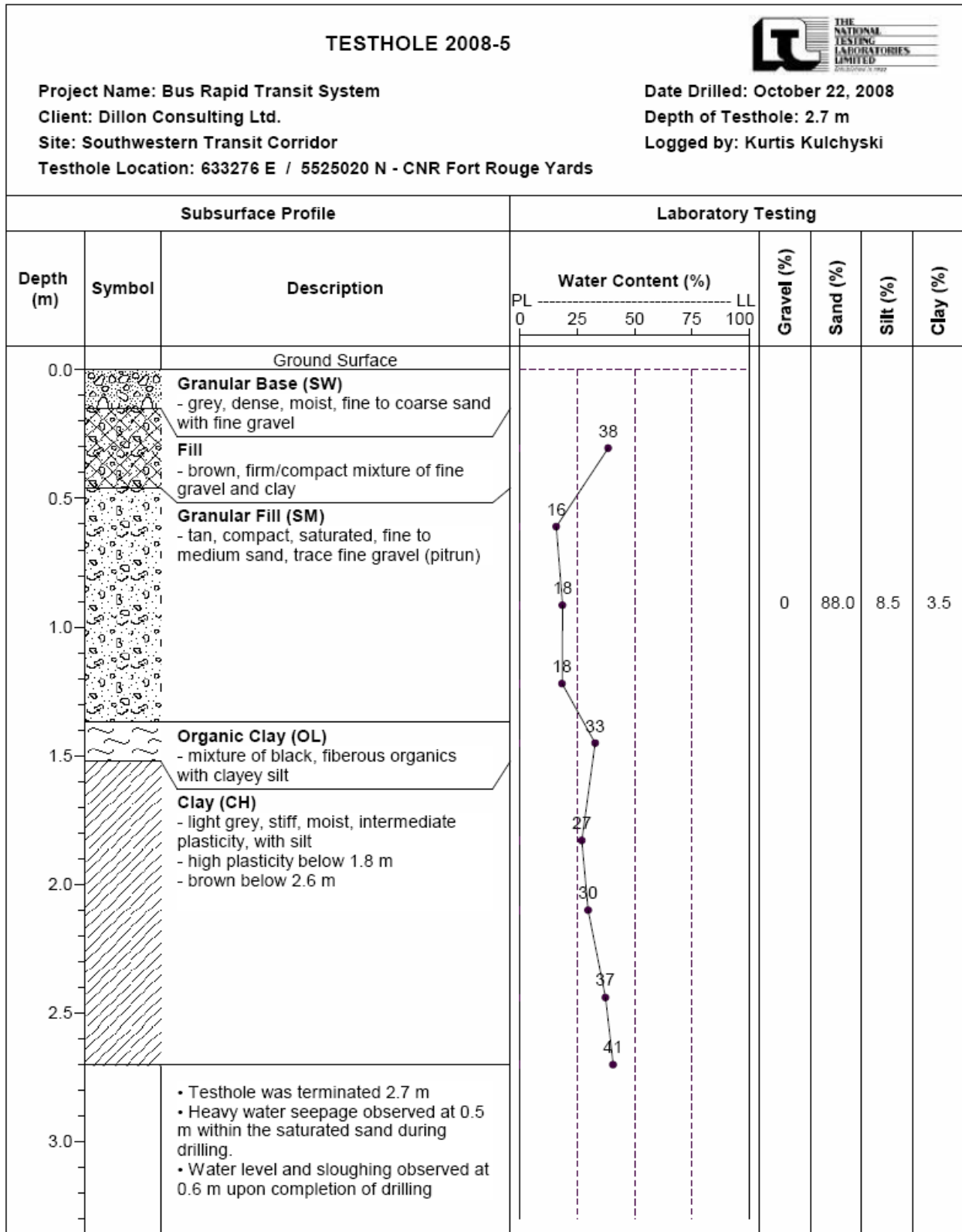




**Test Hole Log for 2008-4**



**Test Hole Log for 2008-5**



Date Drilled: October 22, 2008  
 Depth of Testhole: 2.7 m  
 Logged by: Kurtis Kulchyski

**Test Hole Log for 2008-6**

