

WATER SERVICE INFORMATION					
ADDRESS	SIZE(mm) & TYPE (STREET)	SIZE(mm) & TYPE (PROP)	SHORT & LONG MEASUREMENT	CORP. LOCATION	REMARKS
561 BANNING ST	20	12	1.48 SNL HSE	OPP S/C	-
RESIDENTIAL	COPPER LEAD	188.50 SSL ELLICE			
563 BANNING ST	20	20	1.07 NSL HSE	0.1 S OF S/C	-
RESIDENTIAL	COPPER COPPER	164.14 SSL ELLICE			
565 BANNING ST	20	12	2.80 NSL HSE	0.9 N OF S/C	-
RESIDENTIAL	COPPER LEAD	153.53 SSL ELLICE			
567 BANNING ST	20	12	0.15 SNL HSE	OPP S/C	WYE'D BEFORE C/S W/ #569
RESIDENTIAL	COPPER LEAD	141.21 SSL ELLICE			RENEW W/20 COPPER
569 BANNING ST	20	12	1.77 SSL HSE	0.5 S OF S/C	WYE'D BEFORE C/S W/ #567
RESIDENTIAL	COPPER LEAD	140.78 SSL ELLICE			RENEW W/20 COPPER
571 BANNING ST	-	12	OPP NL HSE	OPP S/C	WYE'D BEFORE C/S W/ #573
RESIDENTIAL	-	LEAD	124.13 SSL ELLICE		RENEW W/20 COPPER
572 BANNING ST	20	12	1.59 SNL HSE	0.5 N OF S/C	-
RESIDENTIAL	COPPER COPPER	168.48 SSL ELLICE			
573 BANNING ST	-	12	0.33 SSL HSE	0.8 S OF S/C	WYE'D BEFORE C/S W/ #571
RESIDENTIAL	-	LEAD	123.27 SSL ELLICE		RENEW W/20 COPPER
574 BANNING ST	20	12	OPP NL HSE	0.7 N OF S/C	WYE'D BEFORE C/S W/ #576
RESIDENTIAL	COPPER LEAD	159.51 SSL ELLICE			REMOVE WYE & RECONNECT
575 BANNING ST	16	12	0.60 SNL HSE	0.6 N OF S/C	WYE'D AFTER C/S W/ #577
RESIDENTIAL	LEAD LEAD	109.42 SSL ELLICE			RENEW W/20 COPPER
576 BANNING ST	20	12	OPP SL HSE	0.3 S OF S/C	WYE'D BEFORE C/S W/ #574
RESIDENTIAL	COPPER COPPER	168.54 SSL ELLICE			REMOVE WYE & RECONNECT
577 BANNING ST	16	12	1.79 SSL HSE	0.6 N OF S/C	WYE'D AFTER C/S W/ #575
RESIDENTIAL	LEAD LEAD	109.42 SSL ELLICE			RENEW W/20 COPPER
579 BANNING ST	20	12	0.27 NNL HSE	OPP S/C	WYE'D BEFORE C/S W/ #581
RESIDENTIAL	COPPER LEAD	83.20 SSL ELLICE			RENEW W/20 COPPER
581 BANNING ST	20	20	OPP SL HSE	0.6 S OF S/C	WYE'D BEFORE C/S W/ #579
RESIDENTIAL	COPPER COPPER	92.56 SSL ELLICE			RENEW W/20 COPPER
582 BANNING ST	12	12	1.52 NSL HSE	0.9 S OF S/C	-
RESIDENTIAL	LEAD LEAD	149.32 SSL ELLICE			RENEW W/20 COPPER
584 BANNING ST	20	20	2.62 SNL HSE	OPP S/C	-
RESIDENTIAL	COPPER COPPER	138.50 SSL ELLICE			
586 BANNING ST	20	20	OPP SL HSE	0.6 S OF S/C	-
RESIDENTIAL	COPPER COPPER	134.44 SSL ELLICE			
588 BANNING ST	20	20	2.45 SNL HSE	0.3 S OF S/C	-
RESIDENTIAL	LEAD LEAD	122.05 SSL ELLICE			RENEW W/20 COPPER
590 BANNING ST	20	12	OPP SL HSE	OPP S/C	-
RESIDENTIAL	COPPER LEAD	117.93 SSL ELLICE			
592 BANNING ST	12	12	0.31 SSL HSE	0.2 S OF S/C	-
RESIDENTIAL	LEAD LEAD	109.94 SSL ELLICE			RENEW W/20 COPPER
594 BANNING ST	12	12	OPP SL HSE	0.6 S OF S/C	-
RESIDENTIAL	LEAD LEAD	99.80 SSL ELLICE			RENEW W/20 COPPER
600 BANNING ST	16	12	2.55 NSL HSE	0.3 S OF S/C	WYE'D AFTER C/S W/ #602
RESIDENTIAL	LEAD LEAD	89.86 SSL ELLICE			RENEW W/20 COPPER
601 BANNING ST	20	20	0.11 SNL HSE	0.4 N OF S/C	WYE'D BEFORE C/S W/ #603
RESIDENTIAL	COPPER COPPER	78.38 SSL ELLICE			RENEW W/20 COPPER
602 BANNING ST	16	12	4.91 SSL HSE	0.3 S OF S/C	WYE'D AFTER C/S W/ #600
RESIDENTIAL	LEAD LEAD	89.86 SSL ELLICE			RENEW W/20 COPPER
603 BANNING ST	20	20	0.95 SSL HSE	OPP S/C	WYE'D BEFORE C/S W/ #601
RESIDENTIAL	COPPER COPPER	77.88 SSL ELLICE			RENEW W/20 COPPER
604 BANNING ST	20	20	0.52 NSL HSE	0.2 N OF S/C	-
RESIDENTIAL	COPPER COPPER	76.58 SSL ELLICE			
605 BANNING ST	20	12	OPP SL HSE	0.3 N OF S/C	-
RESIDENTIAL	COPPER LEAD	69.38 SSL ELLICE			
606 BANNING ST	20	16	2.0 NNL HSE	OPP S/C	WYE'D BEFORE C/S W/ #608
RESIDENTIAL	COPPER LEAD	60.04 SSL ELLICE			RENEW W/20 COPPER

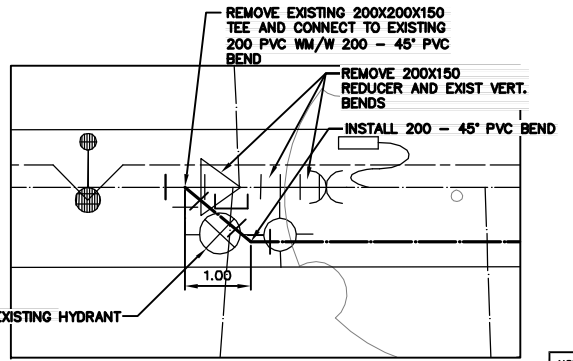
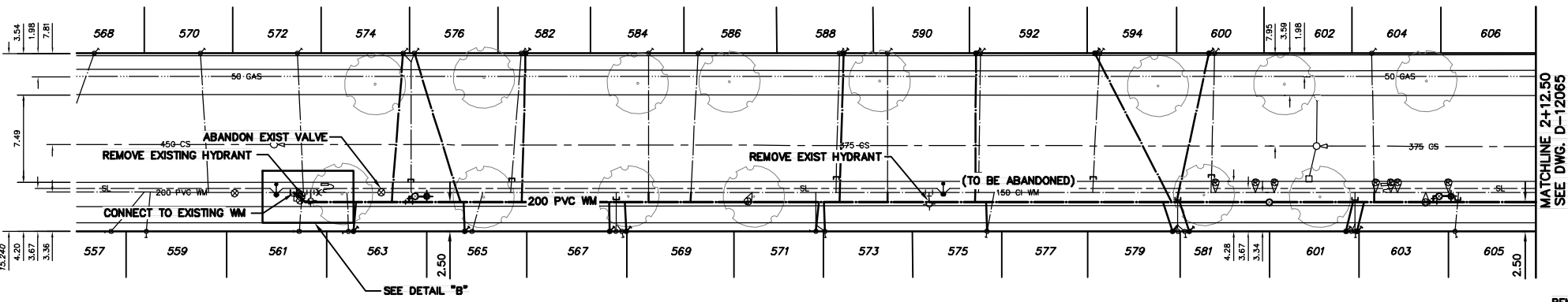
* SERVICES TO BE RENEWED TO R ALL OTHERS TO BE RECONNECTED

NOTE: CHAINAGES SHOWN ARE ALONG E L OF BANNING ST

- CONSTRUCTION NOTES**
1. EXPOSE EXISTING WATERMAIN & CONFIRM INVERTS PRIOR TO CONSTRUCTION.
 2. LOCATION OF ALL SERVICES TO BE CONFIRMED IN THE FIELD.
 3. INSTALL WATERMAIN BY TRENCHLESS METHODS.
 4. TRENCHES AND EXCAVATIONS WITHIN 1 METRE OF A PAVED AREA INCLUDING SIDEWALKS SHALL BE CLASS 3 BACKFILL.
 5. ALL MATERIALS SHALL CONFORM TO THE CITY OF WINNIPEG STANDARD CONSTRUCTION SPECIFICATIONS.
 6. MINIMUM COVER TO TOP OF WATERMAIN SHALL BE 2.4 m.
 7. REPLACE ALL EXISTING LEAD SERVICES FROM PROPOSED WATERMAIN TO R.
 8. NOTIFY ALL AFFECTED RESIDENTS AND BUSINESSES 24 HOURS IN ADVANCE OF ANY WATER SHUTDOWNS OR DISRUPTION OF SERVICE.



BANNING STREET



METRIC
WHOLE NUMBERS INDICATE MILLIMETRES
DECIMALIZED NUMBERS INDICATE METRES

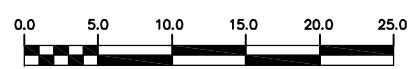
NOTE: ALL VALVES TO BE INSTALLED COUNTERCLOCKWISE TO CLOSE

WARNING

IF POWER EQUIPMENT OR EXPLOSIVES ARE TO BE USED FOR EXCAVATION ON THIS PROJECT THE CONTRACTOR MUST:

- 1) NOTIFY THE GAS COMPANY OF THE PROPOSED LOCATION OF EXCAVATION.
- 2) TAKE PRECAUTION TO AVOID DAMAGE TO GAS COMPANY INSTALLATIONS.

SEE PROVINCIAL REGULATION 210/72 FOR DETAILS



200 WM	WATERMAIN	200 WM	SL, HYDRO	150 WM	WATERMAIN	150 WM	LOCATION APPROVED	B.M. ELEV.	FIELD BOOK #
+	HYDRANT	+	MTS	+	HYDRANT	+	UNDERGROUND STRUCTURES		
o	VALVE	o	TRAFFIC SIGNALS	o	VALVE	o			
525 LDS	LAND DRAINAGE SEWER	525 LDS	GAS	50 GAS	300 LDS	300 LDS			
375 WWS	WASTEWATER SEWER	375 WWS	SURVEY BAR	250 WWS	250 WWS	250 WWS			
o	MANHOLE	o	FENCE	x	o	o			
□	CATCH BASIN	□	POLE - HYDRO, MTS	///	o	o			
▽	CURB INLET	▽	POLE - HYDRO, MTS	///	o	o			
∇	REDUCER	∇	CURB STOP	▲	o	o			
X	COUPLER	X	GUY ANCHOR	△	o	o			
∩	ANODE	∩	LIGHT STANDARD	□	o	o			
o		o	TREE	o	o	o			
EXISTING	LEGEND-PLAN	PROPOSED	EXISTING	LEGEND-PLAN	PROPOSED	EXISTING	LEGEND-PROFILE	PROPOSED	

CITY OF WINNIPEG
WATER AND WASTE
ENGINEERING DIVISION

ENGINEER'S SEAL
ORIGINAL SIGNED
BY S.R.J
COURNOYER
10/06/02

THE CITY OF WINNIPEG
WATER AND WASTE DEPARTMENT

2010 WATERMAIN RENEWALS
CONTRACT 4
BANNING STREET
62.5 S OF ELLICE AVENUE TO
175 S OF ELLICE AVENUE

SHEET 2 OF 9
CITY DRAWING NUMBER
D-12066

DESIGNED BY	RC	CHECKED BY	SC
DRAWN BY	DVG	APPROVED BY	KZ
HOR. SCALE	1:250	RELEASED FOR CONSTRUCTION	
VERTICAL	1:50		
NO. REVISIONS		DATE	2010 06 02

BID OPPORTUNITY 352-2010
FILENAME: D-12066_D-12066.dwg
PLOT DATE: 2010 06 02