

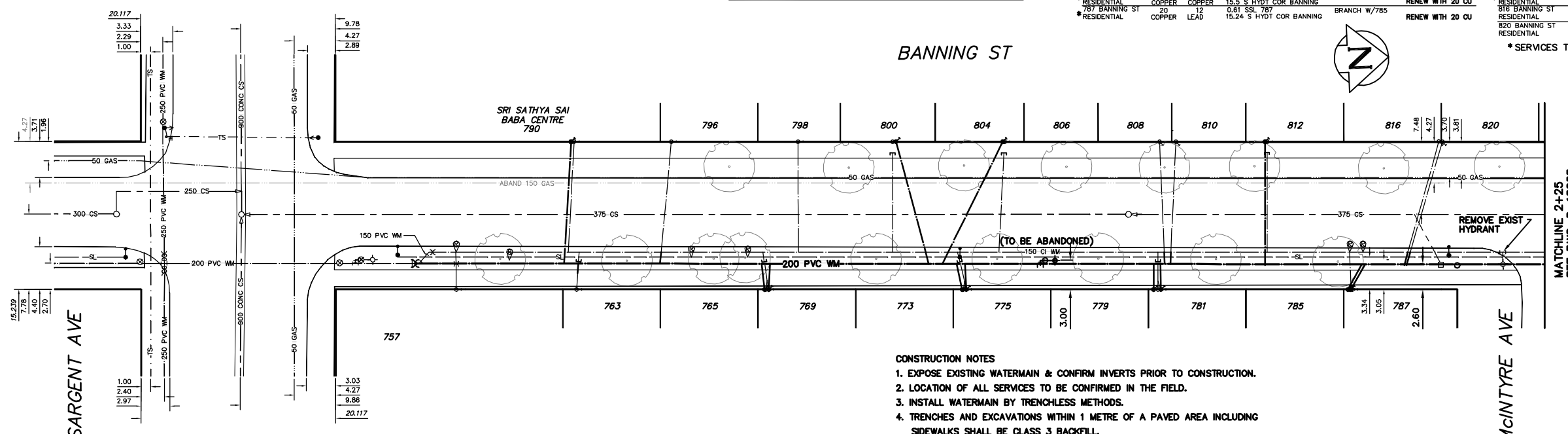
WATER SERVICE INFORMATION

ADDRESS	SIZE(mm)	SIZE(mm)	SHORT & LONG MEASUREMENT	CORP. LOCATION	REMARKS	ADDRESS	SIZE(mm)	SIZE(mm)	SHORT & LONG MEASUREMENT	CORP. LOCATION	REMARKS
757 BANNING ST	25	25	7.8 NSL BLOCK	OPP S/C		790 BANNING ST	12	12	6.1 NSL CHURCH	0.61 S OF S/C	RENEW WITH 20 CU
RESIDENTIAL	COPPER	COPPER	12.5 NSL SARGENT			796 BANNING ST	20	20	24.7 NSL SARGENT	1.07 S OF S/C	
763 BANNING ST	20	20	0.6 NSL HOUSE	0.3 N S/C		RESIDENTIAL	COPPER	LEAD	34.7 NSL SARGENT		
RESIDENTIAL	COPPER	COPPER				798 BANNING ST	20	20	2.3 NSL HOUSE	OPP S/C	
765 BANNING ST	20	12	0.3 SSL 769	0.3 S S/C 765	RENEW WITH 20 CU	RESIDENTIAL	COPPER	COPPER	2.3 NSL SARGENT		
RESIDENTIAL	COPPER	COPPER	44.5 NSL SARGENT			800 BANNING ST	20	20	2.74 NSL HOUSE	OPP S/C	RENEW WITH 20 CU
767 BANNING ST	20	12	0.6 S 769	BRANCH W/765	RENEW WITH 20 CU	RESIDENTIAL	LEAD	LEAD	57.61 NSL SARGENT		
RESIDENTIAL	COPPER	LEAD	44.9			RESIDENTIAL	COPPER	LEAD	69.19 NSL SARGENT	68.58 NSL SARGENT	RENEW WITH 20 CU
773 BANNING ST	20	12	0.6 SSL 775	64.3 NSL OF SARGENT	RENEW WITH 20 CU	RESIDENTIAL	LEAD	LEAD	BRANCH W/806 ON PROP.		RENEW WITH 20 CU
RESIDENTIAL	COPPER	LEAD				808 BANNING ST	20	20	0.2 S OF NPL	0.6 N OF SC	
775 BANNING ST	20	12	0.3 SSL 775	BRANCH W/775	RENEW WITH 20 CU	RESIDENTIAL	COPPER	COPPER	1.8 N OF SBL	0.3 S OF CS	
RESIDENTIAL	COPPER	COPPER				810 BANNING ST	20	20	1.22 NSL FOUNDATION	OPP S/C	RENEW WITH 20 CU
779 BANNING ST	20	12	1.2 SSL 781	OPP S/C	RENEW WITH 20 CU	RESIDENTIAL	COPPER	COPPER	1.1 N OF NBL	3.2 S OF CS	
RESIDENTIAL	COPPER	LEAD	35.4 S HYDT COR BANNING			812 BANNING ST	12	12	1.22 NSL FOUNDATION	OPP S/C	RENEW WITH 20 CU
781 BANNING ST	20	12	0.9 SSL 787	BRANCH W/779	RENEW WITH 20 CU	RESIDENTIAL	LEAD	LEAD	86.32 NSL SARGENT		
RESIDENTIAL	COPPER	LEAD	35 S HYDT COR BANNING			816 BANNING ST	20	20	1 N OF NBL	3.2 S OF CS	
785 BANNING ST	20	20	0.9 SSL 787	OPP S/C	RENEW WITH 20 CU	RESIDENTIAL	COPPER	COPPER	0.3 N OF NPL	3.6 S OF CS	
RESIDENTIAL	COPPER	COPPER	15.9 S HYDT COR BANNING			820 BANNING ST	20	20	0.8 S OF SBL		
787 BANNING ST	20	12	0.61 SSL 787	BRANCH W/785	RENEW WITH 20 CU	RESIDENTIAL	COPPER	COPPER	1.3 S OF SPL		
RESIDENTIAL	COPPER	LEAD	15.24 S HYDT COR BANNING								

*SERVICES TO BE RENEWED TO R ALL OTHERS TO BE RECONNECTED

NOTE: CHAINAGES SHOWN ARE ALONG E R OF BANNING ST

BANNING ST



CONSTRUCTION NOTES

- EXPOSE EXISTING WATERMAIN & CONFIRM INVERTS PRIOR TO CONSTRUCTION.
- LOCATION OF ALL SERVICES TO BE CONFIRMED IN THE FIELD.
- INSTALL WATERMAIN BY TRENCHLESS METHODS.
- TRENCHES AND EXCAVATIONS WITHIN 1 METRE OF A PAVED AREA INCLUDING SIDEWALKS SHALL BE CLASS 3 BACKFILL.
- ALL MATERIALS SHALL CONFORM TO THE CITY OF WINNIPEG STANDARD CONSTRUCTION SPECIFICATIONS.
- MINIMUM COVER TO TOP OF WATERMAIN SHALL BE 2.4 m.
- REPLACE ALL EXISTING LEAD SERVICES FROM PROPOSED WATERMAIN TO R.
- NOTIFY ALL AFFECTED RESIDENTS AND BUSINESSES 24 HOURS IN ADVANCE OF ANY WATER SHUTDOWNS OR DISRUPTION OF SERVICE.

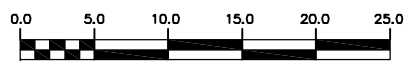
METRIC

WHOLE NUMBERS INDICATE MILLIMETRES
DECIMALIZED NUMBERS INDICATE METRES

NOTE: ALL VALVES TO BE INSTALLED COUNTERCLOCKWISE TO CLOSE

WARNING

IF POWER EQUIPMENT OR EXPLOSIVES ARE TO BE USED FOR EXCAVATION ON THIS PROJECT THE CONTRACTOR MUST:
1) NOTIFY THE GAS COMPANY OF THE PROPOSED LOCATION OF EXCAVATION.
2) TAKE PRECAUTION TO AVOID DAMAGE TO GAS COMPANY INSTALLATIONS.
SEE PROVINCIAL REGULATION 210/72 FOR DETAILS



200 WM	WATERMAIN	200 WM	SL, HYDRO	150 WM	WATERMAIN	150 WM
⊕	HYDRANT	⊕	MTS	⊕	HYDRANT	⊕
⊙	VALVE	⊙	TRAFFIC SIGNALS	⊙	VALVE	⊙
525 LDS	LAND DRAINAGE SEWER	525 LDS	GAS	300 LDS	LAND DRAINAGE SEWER	300 LDS
375 WWS	WASTEWATER SEWER	375 WWS	SURVEY BAR	250 WWS	WASTEWATER SEWER	250 WWS
○	MANHOLE	○	FENCE	⊕	PROFILE	⊕
□	CATCH BASIN	□	POLE - HYDRO, MTS	⊕	GROUND ABOVE PIPE	⊕
▽	CURB INLET	▽	CURB STOP	⊕	DITCH (NORTH & WEST)	⊕
∇	REDUCER	∇	GUY ANCHOR	⊕	DITCH (SOUTH & EAST)	⊕
X	COUPLER	X	LIGHT STANDARD	⊕	GUTTER (NORTH & WEST)	⊕
⊕	ANODE	⊕	TREE	⊕	GUTTER (SOUTH & EAST)	⊕
EXISTING	LEGEND-PLAN	PROPOSED	EXISTING	LEGEND-PLAN	PROPOSED	EXISTING

LOCATION APPROVED UNDERGROUND STRUCTURES	B.M. ELEV.	FIELD BOOK #:
SUPV. U/G STRUCTURES COMMITTEE		
DATE		
NOTE: LOCATION OF UNDERGROUND STRUCTURES AS SHOWN ARE BASED ON THE BEST INFORMATION AVAILABLE BUT NO GUARANTEE IS GIVEN THAT ALL EXISTING UTILITIES ARE SHOWN OR THAT THE GIVEN LOCATIONS ARE EXACT. CONFIRMATION OF EXISTENCE AND EXACT LOCATION OF ALL SERVICES MUST BE OBTAINED FROM THE INDIVIDUAL UTILITIES BEFORE PROCEEDING WITH CONSTRUCTION.		
NO. REVISIONS	DATE	BY

CITY OF WINNIPEG
WATER AND WASTE
ENGINEERING DIVISION

DESIGNED BY: RC
CHECKED BY: SC

DRAWN BY: KB/DVG
APPROVED BY: KZ

HOR. SCALE: 1:250
VERTICAL: 1:50

RELEASED FOR CONSTRUCTION

NO. 2010 06 02

ENGINEER'S SEAL

ORIGINAL SIGNED BY S.R.J. COURNOYER 10/06/02

BID OPPORTUNITY 352-2010
FILENAME: D-12067_D-12068.dwg
PLOT DATE: 2010 06 02

THE CITY OF WINNIPEG
WATER AND WASTE DEPARTMENT

2010 WATERMAIN RENEWALS
CONTRACT 4
BANNING STREET
SARGENT AVENUE TO
125 N OF SARGENT AVENUE

SHEET 3 OF 9
CITY DRAWING NUMBER
D-12067