

WATER SERVICE INFORMATION					
ADDRESS	SIZE(mm) & TYPE (STREET)	SIZE(mm) & TYPE (PROP)	SHORT & LONG MEASUREMENT	CORP. LOCATION	REMARKS
241 BERRY ST	-	-	0.46 N OF N SIDE OF HSE	-	-
RESIDENTIAL	-	-	3.05 FROM HYDT	-	-
242 BERRY ST	-	12	OPP N BL	-	-
RESIDENTIAL	-	-	0.8 S N/L	-	-
245 BERRY ST	-	LEAD	3.81 S OF N SIDE	-	-
RESIDENTIAL	-	-	-	-	-
246 BERRY ST	-	12	2.1 S/NBL	-	-
RESIDENTIAL	-	-	2.9 S/NL	-	-
249 BERRY ST	-	LEAD	1.52 S OF N SIDE	-	-
RESIDENTIAL	-	-	-	-	-
250 BERRY ST	-	-	IN LINE WITH N SIDE OF BLDG	-	-
RESIDENTIAL	-	-	16.76 FROM HYDT	-	-
252 BERRY ST	-	-	1.83 S OF N SIDE OF BLDG	-	-
RESIDENTIAL	-	-	25.81 FROM HYDT	-	-
253 BERRY ST	-	12	2.01 N/SHL	-	-
RESIDENTIAL	-	-	-	-	-
254 BERRY ST	-	20	0.61 S OF N SIDE OF BLDG	-	-
RESIDENTIAL	-	-	32 FROM HYDT	-	-
255 BERRY ST	-	-	3.35 S N/L	-	-
RESIDENTIAL	-	-	-	-	-
257 BERRY ST	-	-	1.6 S OF N SIDE OF BLDG	-	-
RESIDENTIAL	-	-	44.2 FROM HYDT	-	-
258 BERRY ST	-	20	0.91 S OF NL BLDG	-	-
COMMERCIAL	-	-	47.2 FROM HYDT	-	-
259 BERRY ST	-	-	4.57 N OF S SIDE	-	-
RESIDENTIAL	-	-	-	-	-
260 BERRY ST	-	-	0.61 S OF N SIDE OF BLDG	-	-
RESIDENTIAL	-	-	66.39 FROM HYDT	-	-

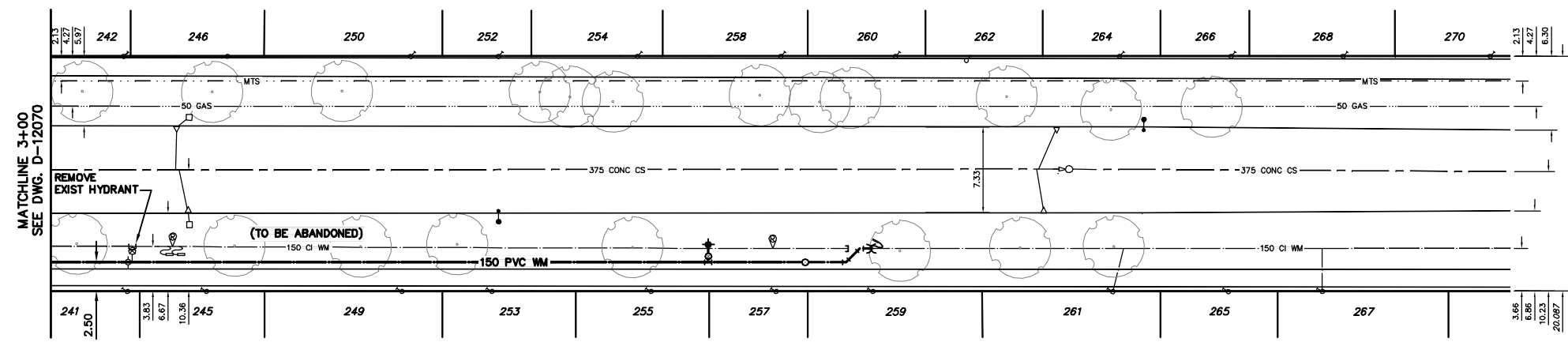
NOTE: CHAINAGES SHOWN ARE ALONG E L OF BERRY ST



\*SERVICES TO BE RENEWED TO R ALL OTHERS TO BE RECONNECTED

- CONSTRUCTION NOTES**
1. EXPOSE EXISTING WATERMAIN & CONFIRM INVERTS PRIOR TO CONSTRUCTION.
  2. LOCATION OF ALL SERVICES TO BE CONFIRMED IN THE FIELD.
  3. INSTALL WATERMAIN BY TRENCHLESS METHODS.
  4. TRENCHES AND EXCAVATIONS WITHIN 1 METRE OF A PAVED AREA INCLUDING SIDEWALKS SHALL BE CLASS 3 BACKFILL.
  5. ALL MATERIALS SHALL CONFORM TO THE CITY OF WINNIPEG STANDARD CONSTRUCTION SPECIFICATIONS.
  6. MINIMUM COVER TO TOP OF WATERMAIN SHALL BE 2.4 m.
  7. REPLACE ALL EXISTING LEAD SERVICES FROM PROPOSED WATERMAIN TO R.
  8. NOTIFY ALL AFFECTED RESIDENTS AND BUSINESSES 24 HOURS IN ADVANCE OF ANY WATER SHUTDOWNS OR DISRUPTION OF SERVICE.

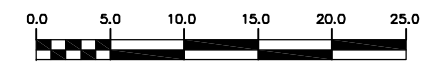
BERRY ST



**METRIC**  
WHOLE NUMBERS INDICATE MILLIMETRES  
DECIMALIZED NUMBERS INDICATE METRES

NOTE: ALL VALVES TO BE INSTALLED COUNTERCLOCKWISE TO CLOSE

**WARNING**  
IF POWER EQUIPMENT OR EXPLOSIVES ARE TO BE USED FOR EXCAVATION ON THIS PROJECT THE CONTRACTOR MUST:  
1) NOTIFY THE GAS COMPANY OF THE PROPOSED LOCATION OF EXCAVATION.  
2) TAKE PRECAUTION TO AVOID DAMAGE TO GAS COMPANY INSTALLATIONS.  
SEE PROVINCIAL REGULATION 210/72 FOR DETAILS



200 WM	WATERMAIN	200 WM	SL, HYDRO	150 WM	WATERMAIN	150 WM
⊕	HYDRANT	⊕	MTS	⊕	HYDRANT	⊕
⊙	VALVE	⊙	TRAFFIC SIGNALS	⊙	VALVE	⊙
525 LDS	LAND DRAINAGE SEWER	525 LDS	GAS	300 LDS	LAND DRAINAGE SEWER	300 LDS
375 WWS	WASTEWATER SEWER	375 WWS	SURVEY BAR	250 WWS	WASTEWATER SEWER	250 WWS
○	MANHOLE	○	FENCE	⊕	PROFILE	⊕
□	CATCH BASIN	□	POLE - HYDRO, MTS	⊕	GROUND ABOVE PIPE	⊕
▽	CURB INLET	▽	CURB STOP	⊕	DITCH (NORTH & WEST)	⊕
◁	REDUCER	◁	GUY ANCHOR	⊕	DITCH (SOUTH & EAST)	⊕
X	COUPLER	X	LIGHT STANDARD	⊕	GUTTER (NORTH & WEST)	⊕
⊕	ANODE	⊕	TREE	⊕	GUTTER (SOUTH & EAST)	⊕
EXISTING	LEGEND-PLAN	PROPOSED	EXISTING	LEGEND-PLAN	PROPOSED	EXISTING

LOCATION APPROVED UNDERGROUND STRUCTURES	B.M. ELEV.	FIELD BOOK #:
SUPV. U/G STRUCTURES COMMITTEE		
DATE		
NO. REVISIONS	DATE	BY

**CITY OF WINNIPEG WATER AND WASTE ENGINEERING DIVISION**

DESIGNED BY: RC  
CHECKED BY: SC

DRAWN BY: KB/DVG  
APPROVED BY: KZ

HOR. SCALE: 1:250  
VERTICAL SCALE: 1:50

RELEASED FOR CONSTRUCTION: 2010 06 02

ENGINEER'S SEAL  
ORIGINAL SIGNED BY S.R.J. COURNOYER 10/06/02

**THE CITY OF WINNIPEG WATER AND WASTE DEPARTMENT**

2010 WATERMAIN RENEWALS CONTRACT 4  
BERRY STREET  
200 N OF PORTAGE AVENUE TO 268 N OF PORTAGE AVENUE

SHEET 7 of 9  
CITY DRAWING NUMBER D-12071