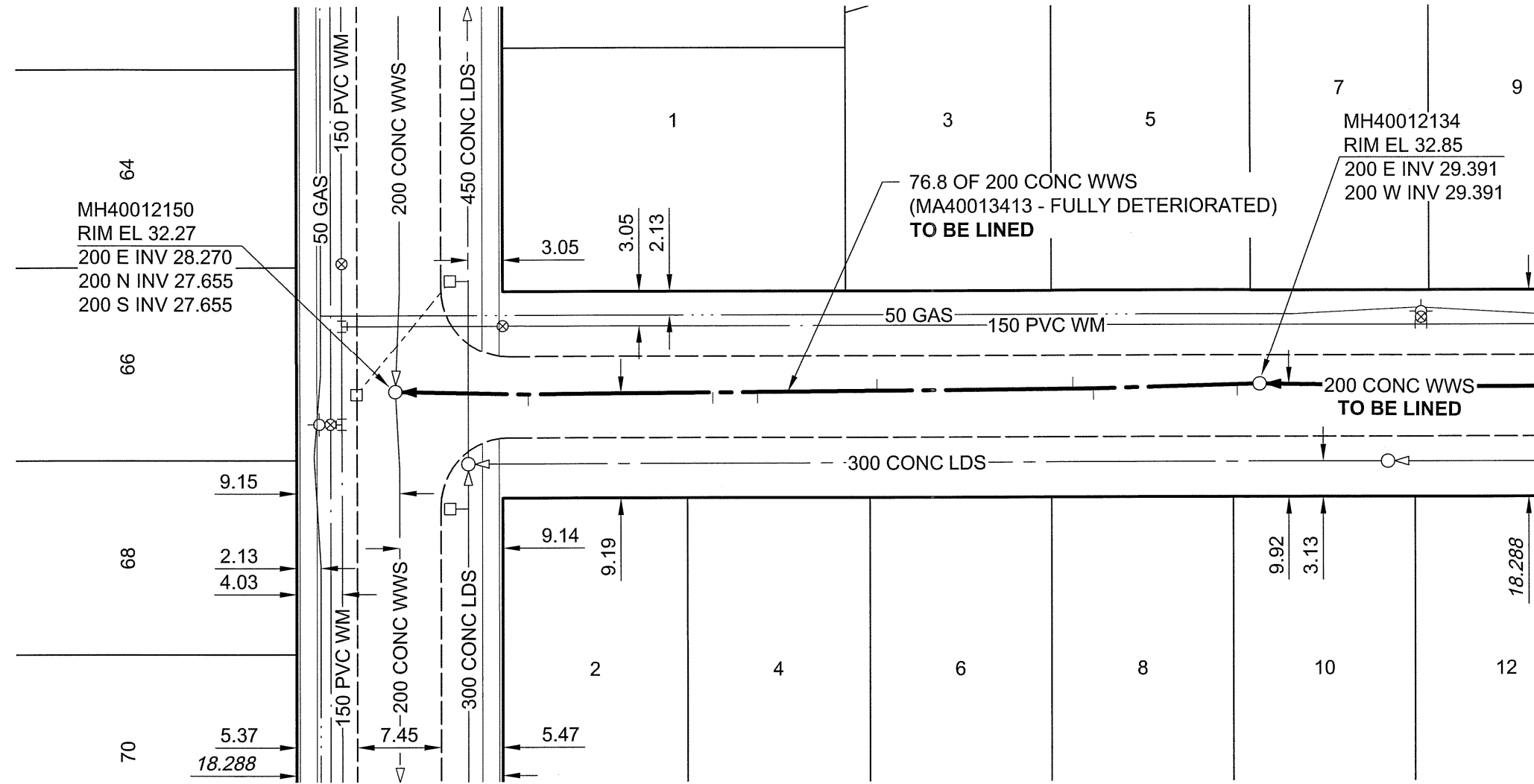




BLUERIDGE BAY (N LEG)

BREWSTER BAY (E LEG)



FOR FURTHER INFO
SEE DWG 9229

SEWER JUNCTION INFORMATION

REF MH*	DIST FROM* REF MH	SIZE*	CLOCK AT*
MH40012134	2.00	150Ø	09
MH40012134	14.80	150Ø	10
MH40012134	16.60	150Ø	02
MH40012134	32.20	150Ø	11
MH40012134	34.00	150Ø	01
MH40012134	48.60	150Ø	11
MH40012134	65.00	150Ø	11

*JUNCTION INFORMATION FROM VIDEO INSPECTION

METRIC
WHOLE NUMBERS INDICATE MILLIMETRES
DECIMALIZED NUMBERS INDICATE METRES

APEGM
Certificate of Authorization
AECOM Canada Ltd.
No. 4671 Date: 10/07/06

BID OPPORTUNITY NO. 361-2010

AECOM REVIEW DRFT CHK

LOCATION APPROVED
UNDERGROUND STRUCTURES

SUPR. U/G STRUCTURES COMMITTEE DATE

NOTE:
LOCATION OF UNDERGROUND STRUCTURES AS SHOWN ARE BASED ON THE BEST INFORMATION AVAILABLE. BUT NO GUARANTEE IS GIVEN THAT ALL EXISTING UTILITIES ARE SHOWN OR THAT THE GIVEN LOCATIONS ARE EXACT. CONFIRMATION OF EXISTENCE AND EXACT LOCATION OF ALL SERVICES MUST BE OBTAINED FROM THE INDIVIDUAL UTILITIES BEFORE PROCEEDING WITH CONSTRUCTION.

BM 87R487 ELEV 232.250m	N.W. Cor. Brewster Bay (W. leg) & Kildare Ave. W. Tblt. on top of 0.05 m sq. x 2.4 m iron tube, 7.9 m S. of N.L. Kildare Ave. W. & on W.L. Brewster Bay (W. leg).		
NO.	ISSUED FOR CONSTRUCTION	10/7/06	KMB
NO.	REVISIONS	YY/MM/DD	BY

AECOM

This drawing has been prepared for the use of AECOM's client and may not be used, reproduced or relied upon by third parties, except as agreed by AECOM and its client, as required by law or for use by governmental reviewing agencies. AECOM accepts no responsibility, and denies any liability whatsoever, to any party that modifies this drawing without AECOM's express written consent. Do not scale this document. All measurements must be obtained from stated dimensions.

DESIGNED BY	ALD	CHECKED BY	PL
DRAWN BY	KMB	APPROVED BY	<i>[Signature]</i>
HOR. SCALE	1:500	RELEASED FOR CONSTRUCTION	<i>[Signature]</i>
VERT. SCALE	N/A	DATE	10/07/06

PROFESSIONAL'S SEAL

PROVINCE OF MANITOBA
06 July 2010
C. C. MACEY
REGISTERED ENGINEER

CONSULTANT DRAWING NO.
60154221-01-C-102-R0X.dwg

THE CITY OF WINNIPEG
WATER AND WASTE DEPARTMENT

2010 WASTE WATER SEWER RENEWALS
BY CIPP LINING
CONTRACT 13

BLUERIDGE BAY (N LEG)
BREWSTER BAY (E LEG)
TO 92m E OF BREWSTER BAY (E LEG)

SHEET 2 OF 73
CITY DRAWING NUMBER
9228
REV 0