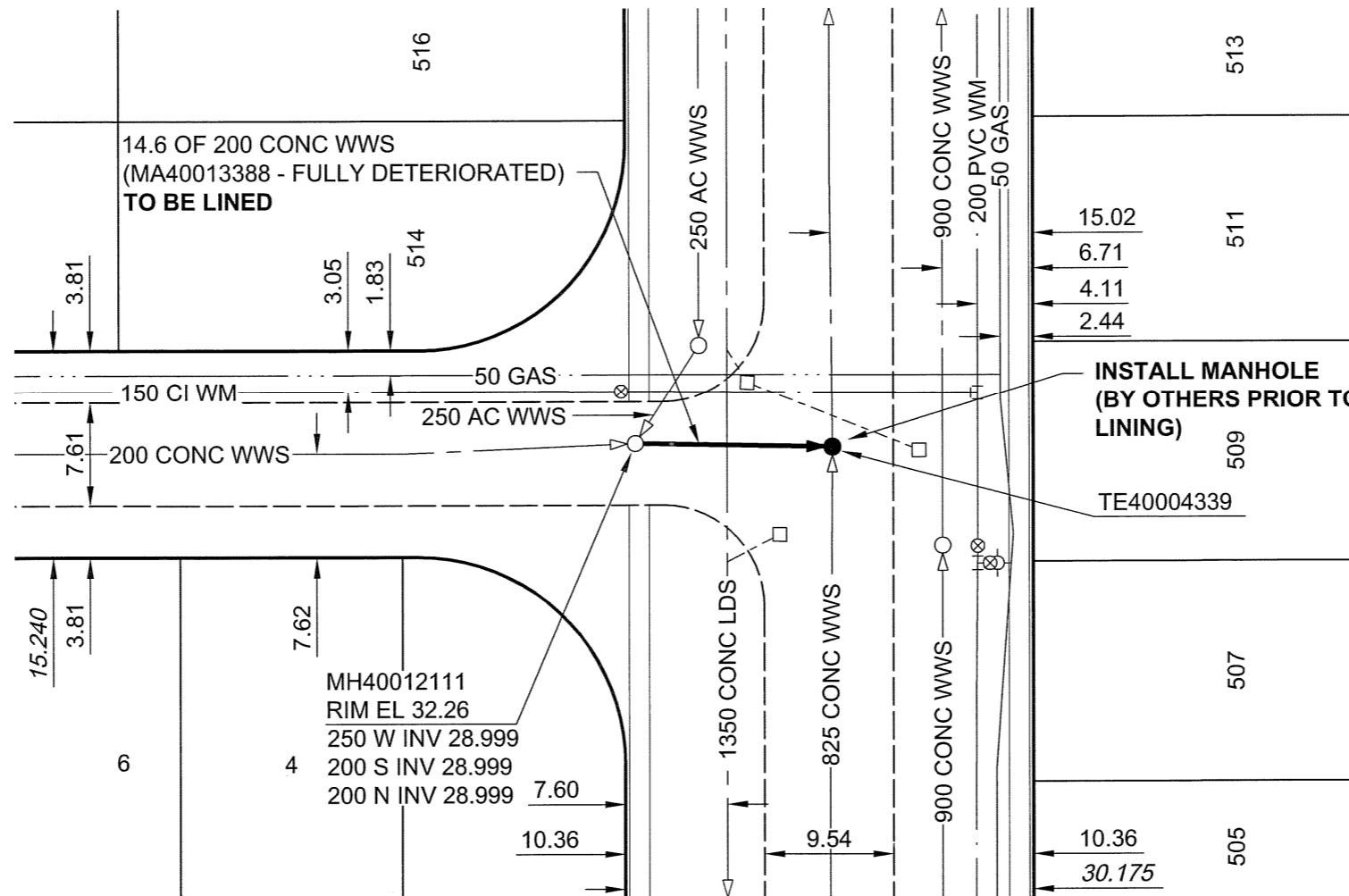


CLOVERDALE CRESCENT



KILDARE AVENUE WEST

APEGM
Certificate of Authorization
AECOM Canada Ltd.
No. 4671 Date: 10/07/06

METRIC
WHOLE NUMBERS INDICATE MILLIMETRES
DECIMALIZED NUMBERS INDICATE METRES

BID OPPORTUNITY NO. 361-2010

AECOM REVIEW DRFT CHK

LOCATION APPROVED UNDERGROUND STRUCTURES

SUPR. U/G STRUCTURES COMMITTEE	DATE

NOTE:
LOCATION OF UNDERGROUND STRUCTURES AS SHOWN ARE BASED ON THE BEST INFORMATION AVAILABLE. BUT NO GUARANTEE IS GIVEN THAT ALL EXISTING UTILITIES ARE SHOWN OR THAT THE GIVEN LOCATIONS ARE EXACT. CONFIRMATION OF EXISTENCE AND EXACT LOCATION OF ALL SERVICES MUST BE OBTAINED FROM THE INDIVIDUAL UTILITIES BEFORE PROCEEDING WITH CONSTRUCTION.

NO.	REVISIONS	YY/MM/DD	BY
0	ISSUED FOR CONSTRUCTION	10/17/06	KMB

<p>AECOM</p> <p>This drawing has been prepared for the use of AECOM's client and may not be used, reproduced or relied upon by third parties, except as agreed by AECOM and its client, as required by law or for use by governmental reviewing agencies. AECOM accepts no responsibility, and denies any liability whatsoever, to any party that modifies this drawing without AECOM's express written consent. Do not scale this document. All measurements must be obtained from stated dimensions.</p>			
DESIGNED BY	ALD	CHECKED BY	PL
DRAWN BY	KMB	APPROVED BY	<i>[Signature]</i>
HOR. SCALE	1:500	RELEASED FOR CONSTRUCTION	<i>[Signature]</i>
VERT. SCALE	N/A	DATE	10/07/06

PROFESSIONAL'S SEAL

PROVINCE OF MANITOBA
5 of July 2010
C. C. MACEY
REGISTERED ENGINEER

CONSULTANT DRAWING NO.
60154221-01-C-109-R0X.dwg

THE CITY OF WINNIPEG WATER AND WASTE DEPARTMENT

2010 WASTE WATER SEWER RENEWALS
BY CIPP LINING
CONTRACT 13
CLOVERDALE CRESCENT
27m N OF VIRDEN CRESCENT
TO KILDARE AVENUE WEST

SHEET 9 OF 73
CITY DRAWING NUMBER
9235
REV 0