

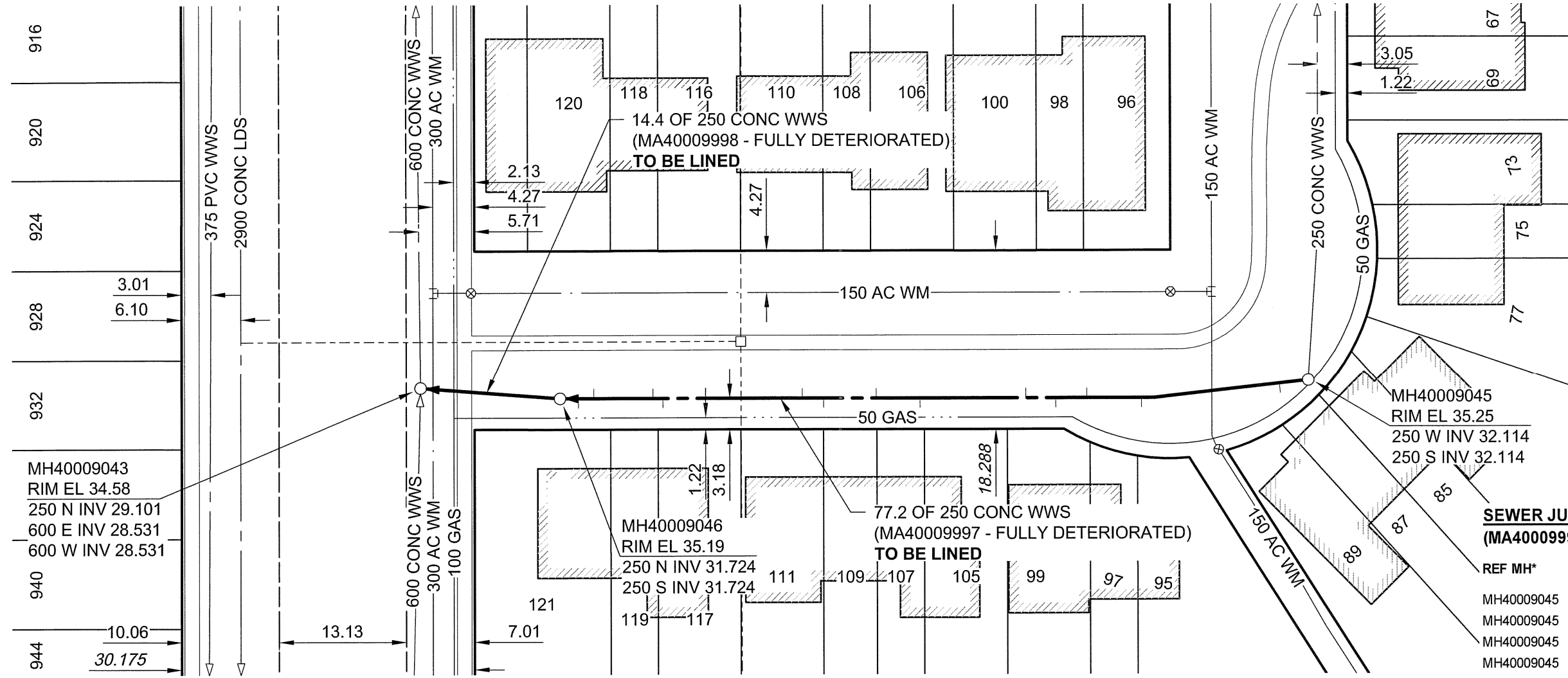
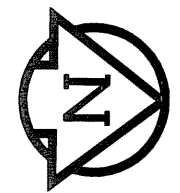
B SIZE 11" x 17" (279mm x 432mm)

FILE NAME: 60154221-01-C-111-R0X.dwg Saved By: berardk

FILE NAME: 60154221-01-C-111-R0X.dwg Saved By: berardk

KILDARE AVENUE EAST

GABLES COURT



SEWER JUNCTION INFORMATION (MA40009997)

REF MH*	DIST FROM* REF MH	SIZE*	CLOCK AT*
MH40009045	3.00	150Ø	09
MH40009045	17.30	150Ø	10
MH40009045	22.90	150Ø	03
MH40009045	26.10	150Ø	10
MH40009045	29.20	150Ø	03
MH40009045	40.10	150Ø	10
MH40009045	44.60	150Ø	03
MH40009045	50.00	150Ø	10
MH40009045	52.20	150Ø	02
MH40009045	66.60	150Ø	10
MH40009045	67.60	150Ø	02
MH40009045	73.70	150Ø	02
MH40009045	75.30	150Ø	10

*JUNCTION INFORMATION FROM VIDEO INSPECTION

METRIC
WHOLE NUMBERS INDICATE MILLIMETRES
DECIMALIZED NUMBERS INDICATE METRES

APEGM
Certificate of Authorization
AECOM Canada Ltd.
No. 4671 Date: 10/07/06

BID OPPORTUNITY NO. 361-2010

AECOM REVIEW
DRAFT CHK

LOCATION APPROVED UNDERGROUND STRUCTURES

SUPR. U/G STRUCTURES DATE COMMITTEE

NOTE:
LOCATION OF UNDERGROUND STRUCTURES AS SHOWN ARE BASED ON THE BEST INFORMATION AVAILABLE. BUT NO GUARANTEE IS GIVEN THAT ALL EXISTING UTILITIES ARE SHOWN OR THAT THE GIVEN LOCATIONS ARE EXACT. CONFIRMATION OF EXISTENCE AND EXACT LOCATION OF ALL SERVICES MUST BE OBTAINED FROM THE INDIVIDUAL UTILITIES BEFORE PROCEEDING WITH CONSTRUCTION.

BM 81RG04 ELEV 234.460m	N.E. Cor. Kildare Ave. E. & Redonda St.; 1bit on top of 0.05 m dia. x 2.4 m iron pipe, 6.1 m S. of N.L. of Kildare Ave. E. & 6.1 m W. of E.L. of Redonda St.
0	ISSUED FOR CONSTRUCTION 10/17/06 KMB
NO.	REVISIONS YY/MM/DD BY

AECOM

This drawing has been prepared for the use of AECOM's client and may not be used, reproduced or relied upon by third parties, except as agreed by AECOM and its client, as required by law or for use by governmental reviewing agencies. AECOM accepts no responsibility, and denies any liability whatsoever, to any party that modifies this drawing without AECOM's express written consent. Do not scale this document. All measurements must be obtained from stated dimensions.

DESIGNED BY	ALD	CHECKED BY	PL
DRAWN BY	KMB	APPROVED BY	[Signature]
HOR. SCALE	1:500	RELEASED FOR CONSTRUCTION	[Signature]
VERT. SCALE	N/A	DATE	10/07/06

PROFESSIONAL'S SEAL

PROVINCE OF MANITOBA
06 July 2010
C. C. MACEY
REGISTERED ENGINEER

CONSULTANT DRAWING NO.
60154221-01-C-111-R0X.dwg

THE CITY OF WINNIPEG
WATER AND WASTE DEPARTMENT

2010 WASTE WATER SEWER RENEWALS
BY CIPP LINING
CONTRACT 13

GABLES COURT EASEMENT (E LEG)
KILDARE AVENUE EAST
TO GABLES COURT (N LEG)

SHEET 11 OF 73
CITY DRAWING NUMBER
9237
REV 0