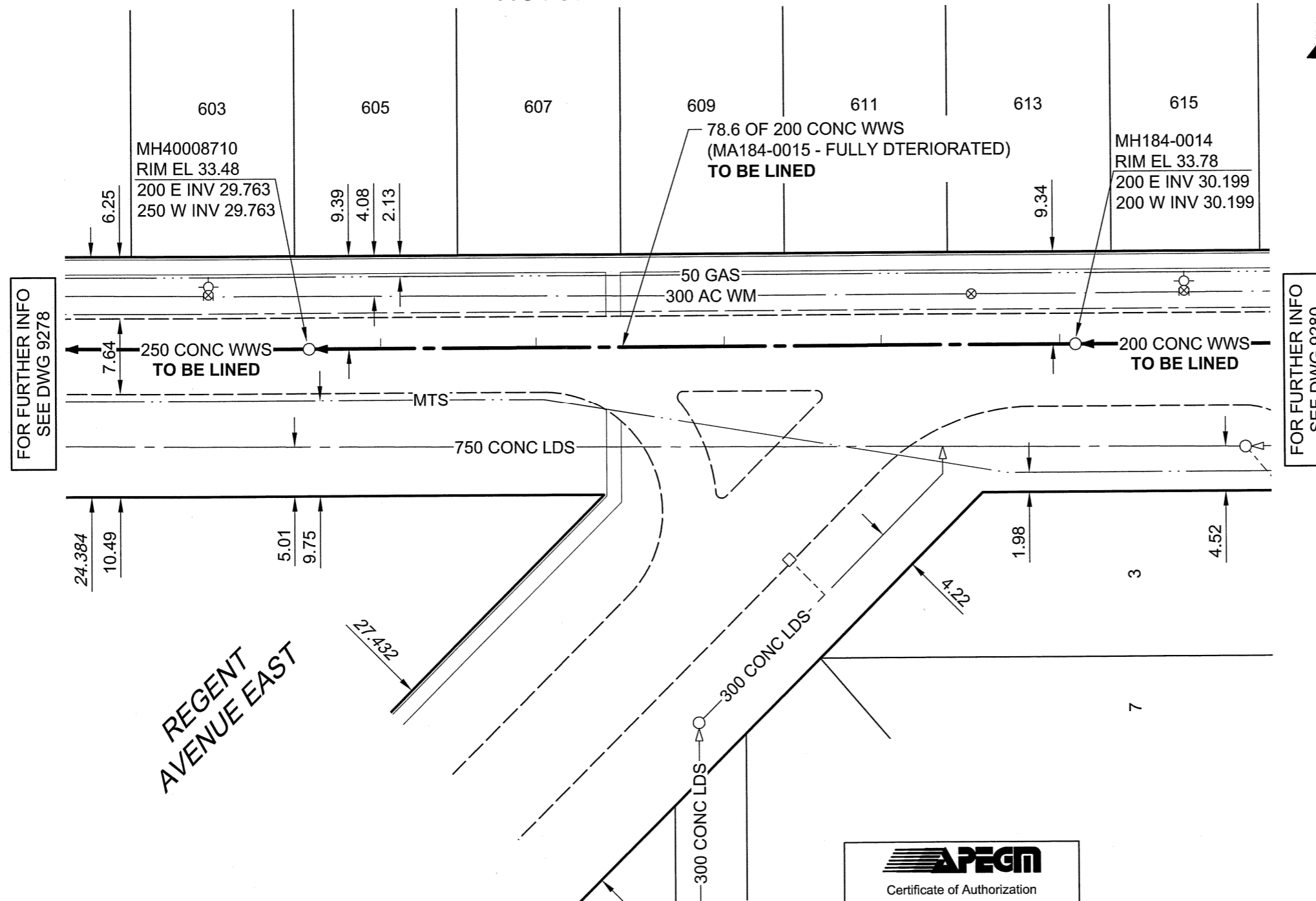


B SIZE 11" x 17" (279mm x 432mm)

PLOT: 7/15/2010 5:21:37 PM

FILE NAME: 60154221-01-C-153-R0X.dwg Saved By: berardk

VICTORIA AVENUE EAST



FOR FURTHER INFO
SEE DWG 9278

FOR FURTHER INFO
SEE DWG 9280

SEWER JUNCTION INFORMATION

REF MH*	DIST FROM* REF MH	SIZE*	CLOCK AT*
MH184-0014	1.60	150Ø	03
MH184-0014	19.90	150Ø	02
MH184-0014	36.00	150Ø	02
MH184-0014	55.30	150Ø	02
MH184-0014	55.30	150Ø	02
MH184-0014	71.30	150Ø	03

*JUNCTION INFORMATION FROM VIDEO INSPECTION

REGENT AVENUE EAST

METRIC
WHOLE NUMBERS INDICATE MILLIMETRES
DECIMALIZED NUMBERS INDICATE METRES

AECOM
Certificate of Authorization
AECOM Canada Ltd.
No. 4671 Date: 10/07/06

BID OPPORTUNITY NO. 361-2010

AECOM REVIEW DRFT CHK

LOCATION APPROVED
UNDERGROUND STRUCTURES

SUPR. U/G STRUCTURES COMMITTEE DATE

NOTE:
LOCATION OF UNDERGROUND STRUCTURES AS SHOWN ARE BASED ON THE BEST INFORMATION AVAILABLE. BUT NO GUARANTEE IS GIVEN THAT ALL EXISTING UTILITIES ARE SHOWN OR THAT THE GIVEN LOCATIONS ARE EXACT. CONFIRMATION OF EXISTENCE AND EXACT LOCATION OF ALL SERVICES MUST BE OBTAINED FROM THE INDIVIDUAL UTILITIES BEFORE PROCEEDING WITH CONSTRUCTION.

BM 87R491 ELEV 233.681m	Wayoata St. @ Ravelston Ave. E., Tblt. on top of 0.05 m sq. x 2.4 m iron tube, 16.4 m E. of W. L. Wayoata St. & 8 m N. of S.L. Ravelston Ave. E.		
NO.	REVISIONS	YY/MM/DD	BY
0	ISSUED FOR CONSTRUCTION	10/17/06	KMB

AECOM

This drawing has been prepared for the use of AECOM's client and may not be used, reproduced or relied upon by third parties, except as agreed by AECOM and its client, as required by law or for use by governmental reviewing agencies. AECOM accepts no responsibility, and denies any liability whatsoever, to any party that modifies this drawing without AECOM's express written consent. Do not scale this document. All measurements must be obtained from stated dimensions.

DESIGNED BY	ALD	CHECKED BY	R
DRAWN BY	KMB	APPROVED BY	[Signature]
HOR. SCALE	1:500	RELEASED FOR CONSTRUCTION	[Signature]
VERT. SCALE	N/A	DATE	10/07/06

PROFESSIONAL'S SEAL

PROVINCE OF MANITOBA
05 July 2010
C. G. MACEY
REGISTERED ENGINEER

CONSULTANT DRAWING NO.
60154221-01-C-153-R0X.dwg

THE CITY OF WINNIPEG
WATER AND WASTE DEPARTMENT

2010 WASTE WATER SEWER RENEWALS
BY CIPP LINING
CONTRACT 13

VICTORIA AVENUE EAST
19m E OF WAYOTA STREET
1m W OF NASKAPI CRESCENT

SHEET	53	OF	73
CITY DRAWING NUMBER	9279		
REV	0		