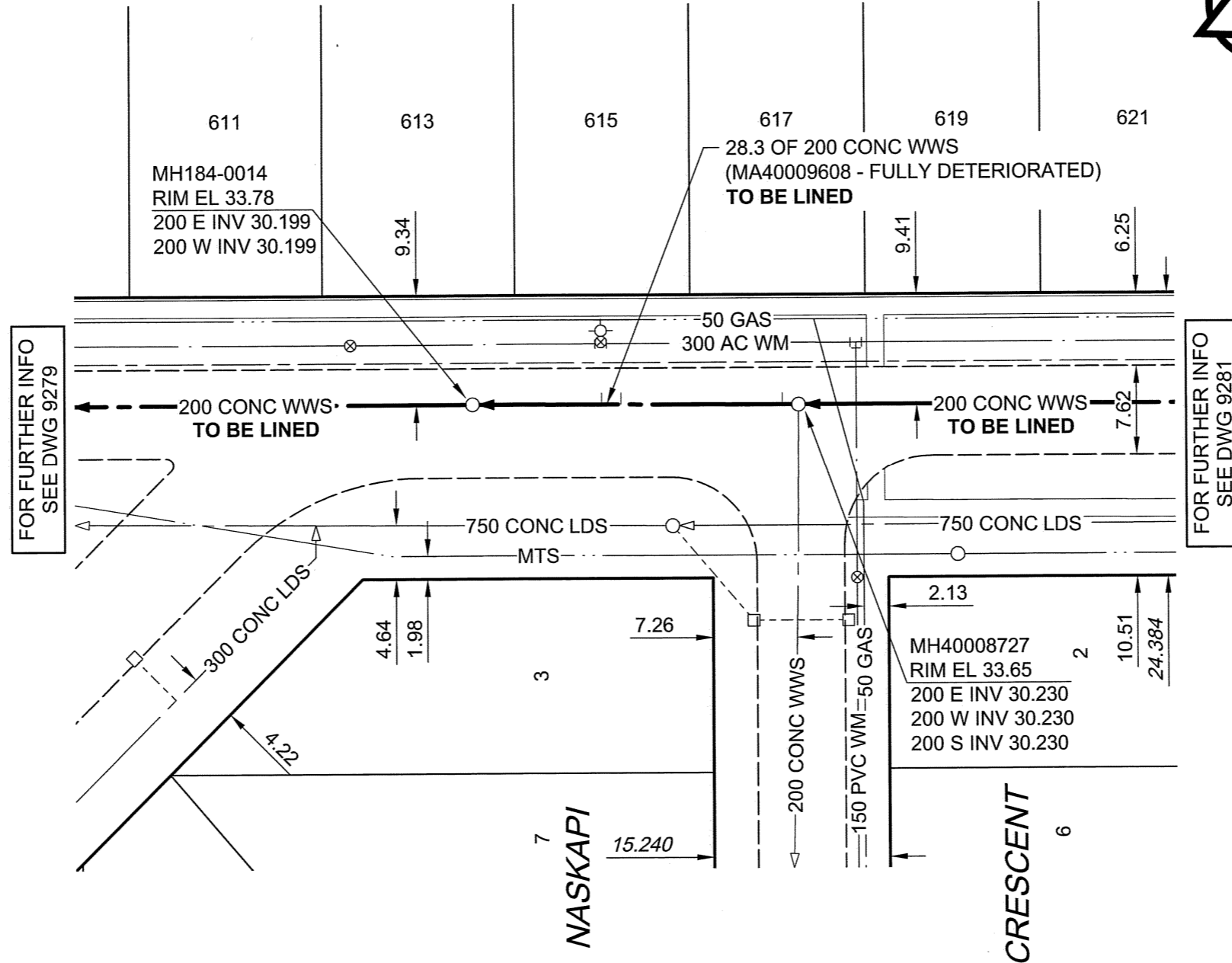


VICTORIA AVENUE EAST



REGENT AVENUE EAST



FOR FURTHER INFO SEE DWG 9279

FOR FURTHER INFO SEE DWG 9281

SEWER JUNCTION INFORMATION

REF MH*	DIST FROM* REF MH	SIZE*	CLOCK AT*
MH40008727	1.40	100Ø	02
MH40008727	15.40	100Ø	02
MH40008727	17.10	100Ø	02

*JUNCTION INFORMATION FROM VIDEO INSPECTION

METRIC

WHOLE NUMBERS INDICATE MILLIMETRES
DECIMALIZED NUMBERS INDICATE METRES

APEGM
Certificate of Authorization
AECOM Canada Ltd.
No. 4671 Date: 10/07/06

BID OPPORTUNITY NO. 361-2010

LOCATION APPROVED
UNDERGROUND STRUCTURES

BM 87R467
ELEV 233.924m
E. side Widiak St., approx. 78.9 m S. of S.L. Coldstream Ave., Tblt. on top of 0.05 m sq. x 2.4 m iron tube, 4.1 m W. of E.L. Widiak St. & on line of S. wall No. 439 Widiak St. or 78.9 m S. of S.L. Coldstream Ave. & 4.1 m W. of E.L. Widiak St.

SUPR. U/G STRUCTURES DATE COMMITTEE

NOTE:
LOCATION OF UNDERGROUND STRUCTURES AS SHOWN ARE BASED ON THE BEST INFORMATION AVAILABLE. BUT NO GUARANTEE IS GIVEN THAT ALL EXISTING UTILITIES ARE SHOWN OR THAT THE GIVEN LOCATIONS ARE EXACT. CONFIRMATION OF EXISTENCE AND EXACT LOCATION OF ALL SERVICES MUST BE OBTAINED FROM THE INDIVIDUAL UTILITIES BEFORE PROCEEDING WITH CONSTRUCTION.

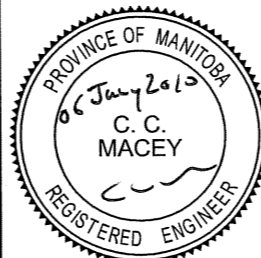
NO.	REVISIONS	YY/MM/DD	BY
0	ISSUED FOR CONSTRUCTION	10/7/06	KMB



This drawing has been prepared for the use of AECOM's client and may not be used, reproduced or relied upon by third parties, except as agreed by AECOM and its client, as required by law or for use by governmental reviewing agencies. AECOM accepts no responsibility, and denies any liability whatsoever, to any party that modifies this drawing without AECOM's express written consent. Do not scale this document. All measurements must be obtained from stated dimensions.

DESIGNED BY	ALD	CHECKED BY	<i>PL</i>
DRAWN BY	KMB	APPROVED BY	<i>Bygnedhelon</i>
HOR. SCALE	1:500	RELEASED FOR CONSTRUCTION	<i>FB</i>
VERT. SCALE	N/A	DATE	10/07/06

PROFESSIONAL'S SEAL



CONSULTANT DRAWING NO.
60154221-01-C-154-R0X.dwg



THE CITY OF WINNIPEG
WATER AND WASTE DEPARTMENT

2010 WASTE WATER SEWER RENEWALS
BY CIPP LINING
CONTRACT 13

VICTORIA AVENUE EAST
REGENT AVENUE EAST
TO NASKAPI CRESCENT

SHEET 54 OF 73

CITY DRAWING NUMBER

9280 REV 0