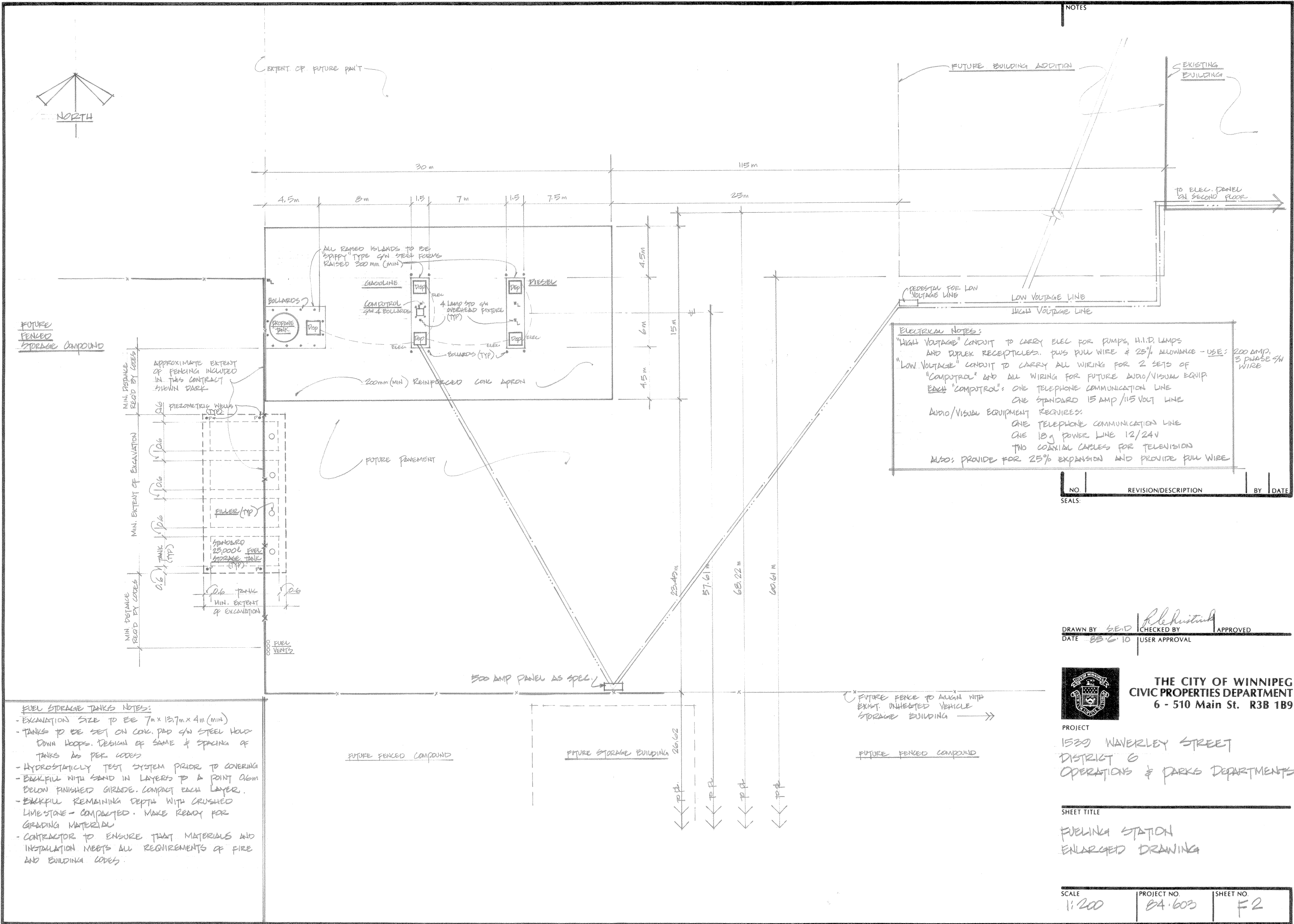
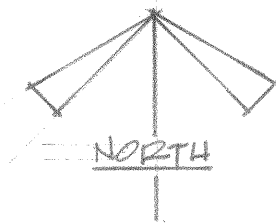


1539 WAVERLEY ST
 address
 84-603
 project no.
 F2
 sheet no.
 DISTRICT 6 OPS & PARKS -
 description
 FUELING STATION - ENLARGED PLANS



ELECTRICAL NOTES:
 "HIGH VOLTAGE" CONDUIT TO CARRY ELEC FOR PUMPS, H.I.D. LAMPS AND DUPLEX RECEPTILES. PLUS PULL WIRE & 25% ALLOWANCE - USE: 200 AMP, 3 PHASE 5W WIRE
 "LOW VOLTAGE" CONDUIT TO CARRY ALL WIRING FOR 2 SETS OF "COMPTROL" AND ALL WIRING FOR FUTURE AUDIO/VISUAL EQUIP
 EACH "COMPTROL": ONE TELEPHONE COMMUNICATION LINE
 ONE STANDARD 15 AMP /115 VOLT LINE
 AUDIO/VISUAL EQUIPMENT REQUIRES:
 ONE TELEPHONE COMMUNICATION LINE
 ONE 18g POWER LINE 12/24V
 TWO COAXIAL CABLES FOR TELEVISION
 ALSO: PROVIDE FOR 25% EXPANSION AND PROVIDE PULL WIRE

FUEL STORAGE TANKS NOTES:
 - EXCAVATION SIZE TO BE 7m x 13.7m x 4m (MIN)
 - TANKS TO BE SET ON CONC PAD w/ STEEL HOLD DOWN HOOPS. DESIGN OF SAME & SPACING OF TANKS AS PER CODES
 - HYDROSTATICALLY TEST SYSTEM PRIOR TO COVERING
 - BACKFILL WITH SAND IN LAYERS TO A POINT 0.6m BELOW FINISHED GRADE. COMPACT EACH LAYER.
 - BACKFILL REMAINING DEPTH WITH CRUSHED LIMESTONE - COMPACTED. MAKE READY FOR GRADING MATERIAL
 - CONTRACTOR TO ENSURE THAT MATERIALS AND INSTALLATION MEETS ALL REQUIREMENTS OF FIRE AND BUILDING CODES

NO.	REVISION/DESCRIPTION	BY	DATE

DRAWN BY: SEID
 CHECKED BY: R. Leistikow
 DATE: 85.6.10
 USER APPROVAL: [Signature]
 APPROVED: [Signature]



PROJECT
 1539 WAVERLEY STREET
 DISTRICT 6
 OPERATIONS & PARKS DEPARTMENTS.

SHEET TITLE
 FUELING STATION
 ENLARGED DRAWING

SCALE 1:200	PROJECT NO. 84-603	SHEET NO. F2
----------------	-----------------------	-----------------