

1.0 CONSTRUCTION NOTES

- .1 ALL CONSTRUCTION TO CONFORM WITH APPROPRIATE CITY OF WINNIPEG CONSTRUCTION SPECIFICATIONS.
- .2 CONTRACTOR TO OBTAIN ALL PERMITS.
- .3 CONTRACTOR TO OBTAIN UTILITY CLEARANCES BEFORE EXCAVATING.
- .4 AUGER UNDER STREET PAVEMENT.
- .5 BACKFILL ALL TRENCHES IN PARKING LOTS WITH GRANULAR MATERIALS.
- .6 BACKFILL IN LANDSCAPED AREAS TO BE CLASS 5.
- .7 CONFIRM ALL DIMENSIONS BEFORE STARTING.

2.0 DRAINAGE DESIGN NOTES

- .1 RATIONAL FORMULA WAS USED.

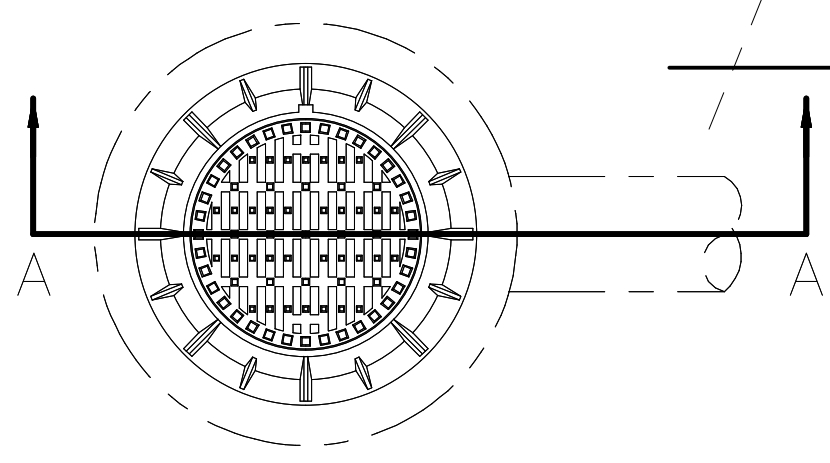
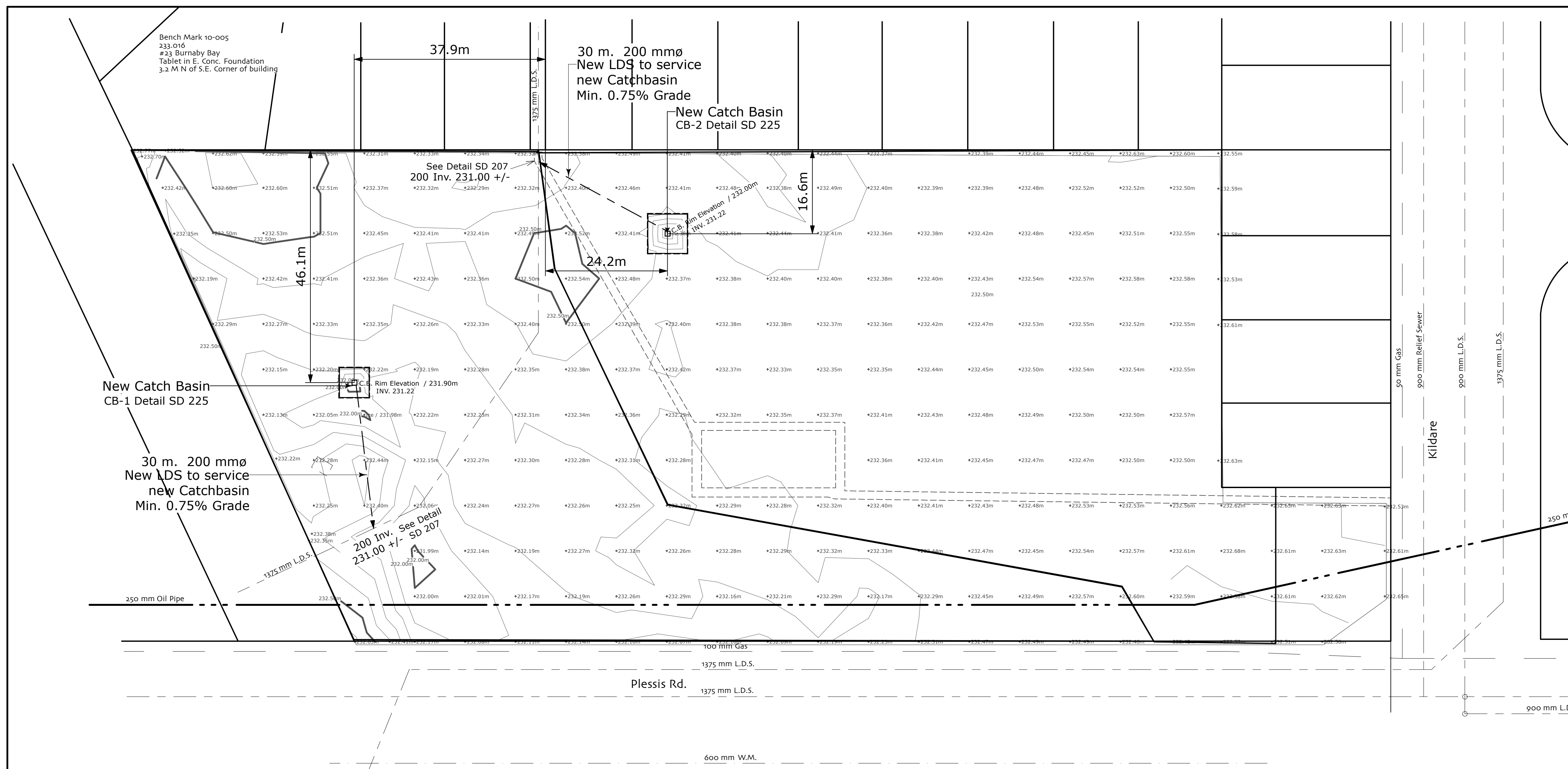
$$Q = \frac{47.2}{(t+8)^{.828}}$$
 t = 10 MINUTES
i = 4.31 in/hr
A = 5.26 AC
- .2 Q = CIA FOR 25 YEAR STORM

$$Q = \frac{72.5}{(t+9)^{.842}}$$
 t = 10 MINUTES
i = 6.08 in/hr
A = 5.76 AC

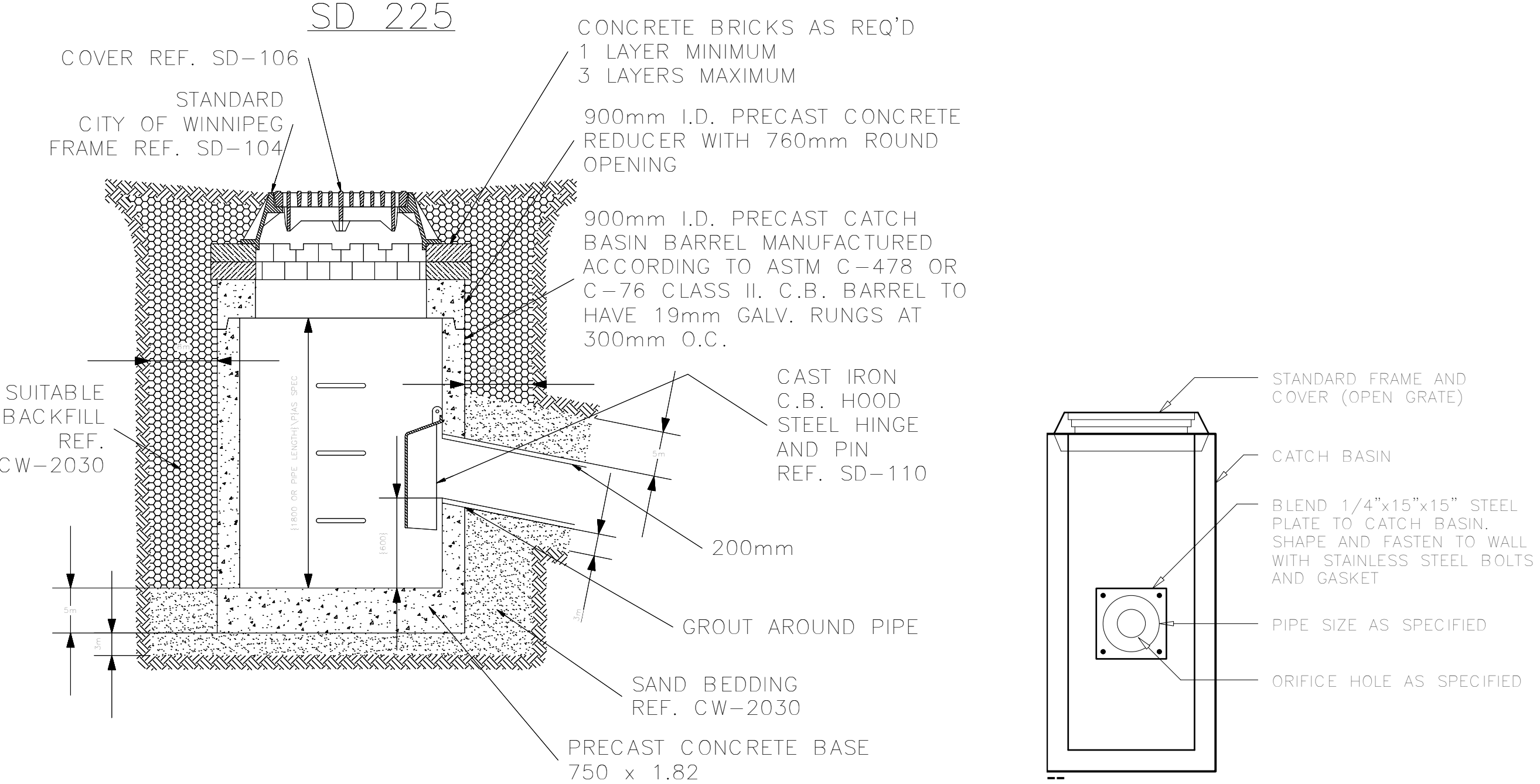
- .2 MAXIMUM ALLOWABLE RUNOFF COEFFICIENT: C = 0.10
- .3 MAXIMUM ALLOWABLE RUNOFF FOR 5 YEAR STORM IS 2.48 CFS.
- .4 MAXIMUM ALLOWABLE RUNOFF FOR 25 YEAR STORM IS 3.50 CFS.
- .8 AVERAGE WEIGHTED C = 0.10 (ROUND OFF)

3.0 MISCELLANEOUS NOTES

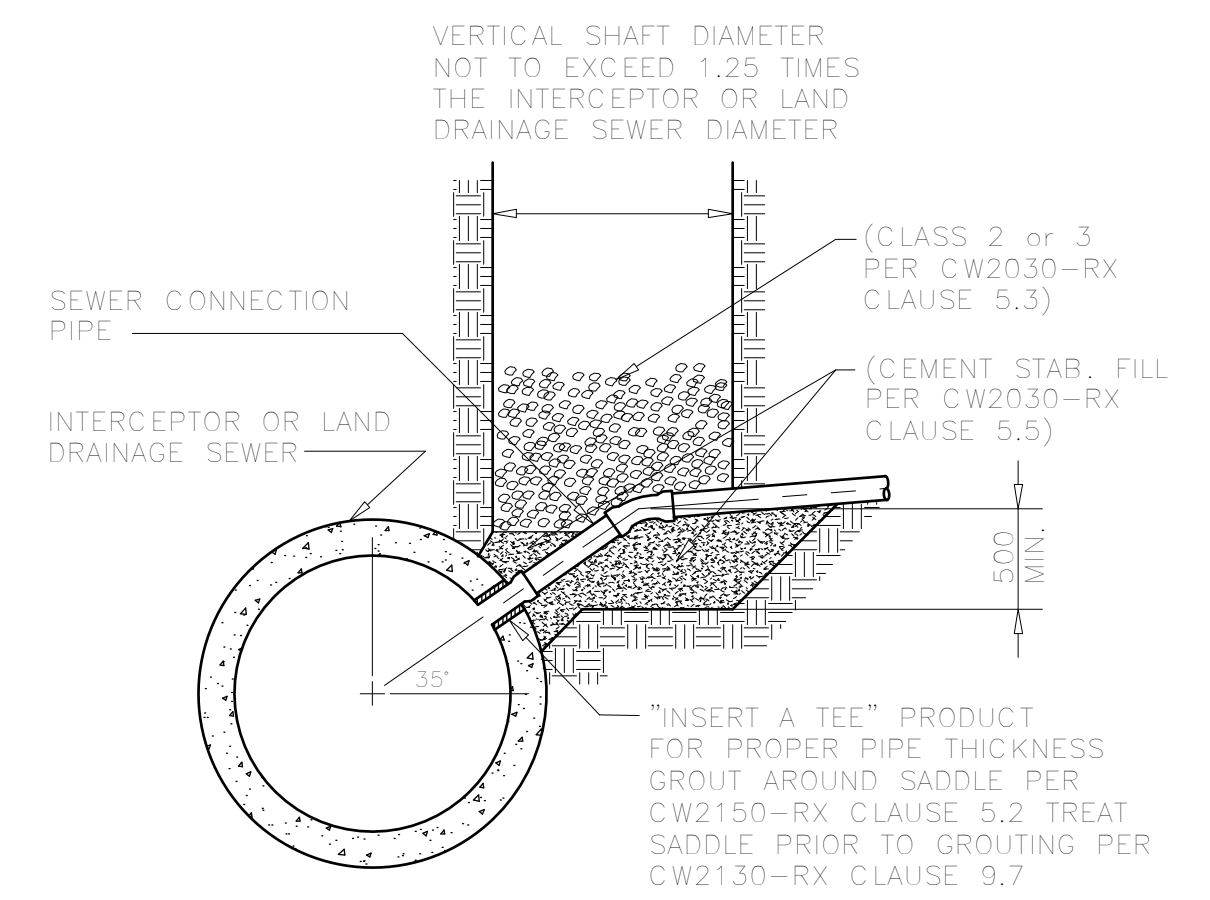
- .1 TOPOGRAPHIC SURVEY BY Dean Spearman
- .2 EXISTING UTILITY INFORMATION COMPILED FROM GEO ENGINEERING DRAWING.
- .3 GEODETIC BENCH MARK 10-005 ELEVATION 233.016 METRES.



PLAN
Pre Cast Catch Basin
SD 225



SECTION A-A
SCALE: N.T.S.
DIMENSIONS ARE IN MILLIMETRES



DETAIL 35 DROP (SD-009)
CONNECTION TO INTERCEPTOR
NTSS.

- NOTES:
- HOLE IN SEWER PIPE TO BE MADE BY EITHER THE CONCRETE CORING METHOD OR BY DRILLING (USING A ROTARY AIR DRILL) A SERIES OF HOLES AROUND THE PERIMETER OF THE REQUIRED OPENING AND REMOVING THE COUPON.
 - CONNECTION PIPE DIAMETER NOT TO EXCEED 375.
 - WRITTEN APPROVAL IS REQUIRED BY WOOD PRIOR TO ANY CONNECTION TO THE INTERCEPTOR IN ALL INSTANCES.

MTS	MTS	MTS
TRAFFIC SIGNALS	TRAFFIC SIGNALS	TRAFFIC SIGNALS
GAS	GAS	GAS
WATERMAIN	WATERMAIN	WATERMAIN
HYDRANT	HYDRANT	HYDRANT
VALVE	VALVE	VALVE
LAND DRAINAGE SEWER	LAND DRAINAGE SEWER	LAND DRAINAGE SEWER
WASTE WATER SEWER	WASTE WATER SEWER	WASTE WATER SEWER
MANHOLE	MANHOLE	MANHOLE
CATCH BASIN	CATCH BASIN	CATCH BASIN
CURB INLET	CURB INLET	CURB INLET
JUNCTIONS	JUNCTIONS	JUNCTIONS
CULVERT	CULVERT	CULVERT
PROPERTY LINE	PROPERTY LINE	PROPERTY LINE
SURVEY BAR	SURVEY BAR	SURVEY BAR
SERVICE VALVE	SERVICE VALVE	SERVICE VALVE
SIDEWALK RAMP	SIDEWALK RAMP	SIDEWALK RAMP
RIDGE	RIDGE	RIDGE
ELEVATION	Δ 231.45	Δ 231.45
DRAINAGE FLOW	DRAINAGE FLOW	DRAINAGE FLOW
EXISTING	EXISTING	PROPOSED

1. This drawing shall not be used for construction unless signed and sealed by Landscape Architect.
2. Variations and modifications to the work shown will not be allowed without prior written consent of Landscape Architect.
3. Drawing and Specifications, as instruments of service, are the property of the Landscape Architect. The copyright is reserved in the name of the Landscape Architect. No reproduction may be made without the prior written consent of the Landscape Architect.
4. Contractors/bidders are hereby granted a limited licence to reproduce these drawings for the purposes of bidding. Such reproductions are not to be used for construction.

No.	Date	Issue Notes
1	3/4/09	

Consultant: MEC Consulting

Project Title: Transcona - Kiwanis Park Site Drainage Improvements

Drawing Title: Land Drainage (Civil)

Drawing No. C-1

MEC CONSULTING
14 - 335 BERRY STREET
WINNIPEG, MANITOBA R3J 1N6
Tel: (204) 783-0757
Fax: (204) 774-3778
manengco@mts.net

DRN: DS	APP: WW	MEC DWG No.:	REV:
CHK: WW	DATE: 03/04/09	09002	

