

A LISMORE AVENUE & ODDY STREET SECTION
1:50H 1:25V

METRIC
WHOLE NUMBERS INDICATE MILLIMETRES
DECIMALIZED NUMBERS INDICATE METRES

WARNING
IF POWER EQUIPMENT OR EXPLOSIVES ARE TO BE USED FOR EXCAVATION ON THIS PROJECT THE CONTRACTOR MUST:
1) NOTIFY THE GAS COMPANY OF THE PROPOSED LOCATION OF EXCAVATION.
2) TAKE PRECAUTION TO AVOID DAMAGE TO GAS COMPANY INSTALLATIONS.
SEE PROVINCIAL REGULATION 140/92 FOR DETAILS

11 (654511) -N.W. COR. KING EDWARD ST. & NOTRE DAME AVE., TBLT. IN 7.6 m CONC. PILE BENEATH TRAP; 8.8 m W. OF C.L. PAVT. OF S. BOUND TRAFFIC LANE OF KING EDWARD ST. & 8.5 m N. OF C.L. OF W. BOUND TRAFFIC LANE NOTRE DAME AVE.

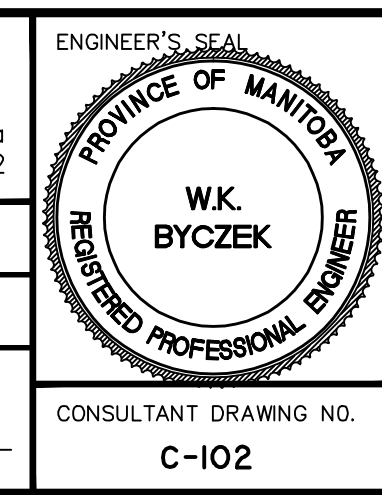


EXISTING	LEGEND-PLAN	PROPOSED	EXISTING	LEGEND-PLAN	PROPOSED
150 WM	WATERMAIN	150 WM	HYDRO		
⊕	HYDRANT	⊕	M.T.S.		
⊕	VALVE	⊕	CONCRETE		
300 LDS	LAND DRAINAGE SEWER	300 LDS	ASPHALT		
250 WWS	WASTE WATER SEWER	250 WWS	SIDEWALK		
○	MANHOLE	●	PROPERTY LINE		
□	CATCH BASIN	⊕	SURVEY BAR		
▽	CURB INLET	▽	DITCH		
+	JUNCTIONS	+	ELEVATION	(31.334)	(32.231)
▬	CULVERT	▬	SIDEWALK RAMP		
---	GAS	---			

LOCATION APPROVED UNDERGROUND STRUCTURES
SUPV. U/G STRUCTURES DATE COMMITTEE
NOTE:
LOCATION OF UNDERGROUND STRUCTURES AS SHOWN ARE BASED ON THE BEST INFORMATION AVAILABLE BUT NO GUARANTEE IS GIVEN THAT ALL EXISTING UTILITIES ARE SHOWN OR THAT THE GIVEN LOCATIONS ARE EXACT. CONFIRMATION OF EXISTENCE AND EXACT LOCATION OF ALL SERVICES MUST BE OBTAINED FROM THE INDIVIDUAL UTILITIES BEFORE PROCEEDING WITH CONSTRUCTION.

B.M. 23-016	ELEV. 233.904m		
0	ISSUED FOR REVIEW	10.0X.XX	W.K.B.
NO.	REVISIONS	DATE	BY

Stantec Consulting Ltd.	
905 Waverley Street, Winnipeg, Manitoba Tel 204-489-5900 Fax 204-453-9012	
DESIGNED BY	W.K.B.
CHECKED BY	W.K.B.
DRAWN BY	R.P.V.
APPROVED BY	W.K.B.
HOR. SCALE:	1:150
VERTICAL:	N/A
RELEASED FOR CONSTRUCTION:	
DATE	10.02.08



THE CITY OF WINNIPEG
PUBLIC WORKS DEPARTMENT
ENGINEERING DIVISION

2010 AT INFRASTRUCTURE STIMULUS PROGRAM
ALEXANDER/PACIFIC BIKEWAY
INTERSECTION OF LISMORE AVENUE & ODDY STREET
INTERSECTION MODIFICATION

SHEET 3 OF 14
CAD FILE DRAWING NUMBER 05260c-101-XXX.dwg
CITY DRAWING NUMBER W-375-03

CONSULTANT DRAWING NO. C-102

V:\137\winnipeg\1370260\winnipeg\02_dwg\sheet.dwg CONTRACT # 05260c-101-xxx.dwg 2010-09-10 02:28PM By: j.miller