

**A** ALEXANDER AVENUE & WORTH STREET SECTION  
1:50H 1:25V

S.E. COR. ELGIN AVE. & WORTH ST., TBLT. IN N. CONC.  
FOUNDATION NO. 1570 ELGIN AVE. (CECIL RHODES  
SCHOOL NO.2), 10 m E. & 0.2 m BELOW BRICK OF N.W.  
COR. OF BLDG.



**METRIC**  
WHOLE NUMBERS INDICATE MILLIMETRES  
DECIMALIZED NUMBERS INDICATE METRES

**WARNING**  
IF POWER EQUIPMENT OR EXPLOSIVES ARE TO BE USED FOR EXCAVATION ON THIS PROJECT THE CONTRACTOR MUST:  
1) NOTIFY THE GAS COMPANY OF THE PROPOSED LOCATION OF EXCAVATION.  
2) TAKE PRECAUTION TO AVOID DAMAGE TO GAS COMPANY INSTALLATIONS.  
SEE PROVINCIAL REGULATION 140/92 FOR DETAILS

150 WM	WATERMAIN	150 WM	HYDRO	
⊕	HYDRANT	⊕	M.T.S.	
⊕	VALVE	⊕	CONCRETE	
300 LDS	LAND DRAINAGE SEWER	300 LDS	ASPHALT	
250 WWS	WASTE WATER SEWER	250 WWS	SIDEWALK	
○	MANHOLE	●	PROPERTY LINE	
□	CATCH BASIN	⊕	SURVEY BAR	
▽	CURB INLET	→	DITCH	
+	JUNCTIONS	(31.334)	ELEVATION	(32.231)
— — —	CULVERT	— — —	SIDEWALK RAMP	
— — —	GAS			
EXISTING	LEGEND-PLAN	PROPOSED	EXISTING	LEGEND-PLAN
				PROPOSED

**LOCATION APPROVED UNDERGROUND STRUCTURES**

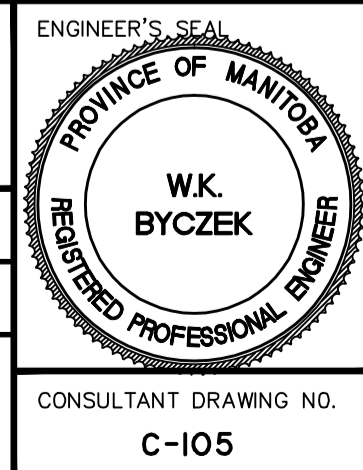
SUPV. U/G STRUCTURES	DATE
COMMITTEE	

**NOTE:**  
LOCATION OF UNDERGROUND STRUCTURES AS SHOWN ARE BASED ON THE BEST INFORMATION AVAILABLE BUT NO GUARANTEE IS GIVEN THAT ALL EXISTING UTILITIES ARE SHOWN OR THAT THE GIVEN LOCATIONS ARE EXACT. CONFIRMATION OF EXISTENCE AND EXACT LOCATION OF ALL SERVICES MUST BE OBTAINED FROM THE INDIVIDUAL UTILITIES BEFORE PROCEEDING WITH CONSTRUCTION.

B.M.	36-028
ELEV.	232.917m
0	ISSUED FOR REVIEW
NO.	REVISIONS
DATE	BY
10.0X.XX	W.K.B.
DATE	10.02.08

**Stantec Consulting Ltd.**  
905 Waverley Street, Winnipeg, Manitoba  
Tel 204-489-5900 Fax 204-453-9012

DESIGNED BY	W.K.B.	CHECKED BY	W.K.B.
DRAWN BY	R.P.V.	APPROVED BY	W.K.B.
HOR. SCALE:	1:250	RELEASED FOR CONSTRUCTION:	
VERTICAL:	N/A	DATE	



**THE CITY OF WINNIPEG**  
PUBLIC WORKS DEPARTMENT  
ENGINEERING DIVISION

2010 AT INFRASTRUCTURE STIMULUS PROGRAM  
ALEXANDER/PACIFIC BIKEWAY  
INTERSECTION OF ALEXANDER AVENUE & WORTH STREET  
INTERSECTION MODIFICATION

SHEET 6 OF 14  
CAD FILE DRAWING NUMBER 05260c-101-XXX.dwg  
CITY DRAWING NUMBER W-375-06

V:\1570\winnipeg\1570260\alexander\w02\_dwg\alexander.dwg (CONTRACT # 05260c-101) - mcd.dwg  
 2010-09-10 02:56PM By: j.miller