

**A**  
KENNY STREET & EUGENIE STREET SECTION  
1:50H 1:25V

N.E. COR. HANDSIDE AVE. & EGERTON RD., 19mm DIA. x 4.6M I.B. IN VALVE BOX, 3.0m S. OF N. L. OF HANDSIDE AVE. ALONG E.L. OF EGERTON RD.

**METRIC**  
WHOLE NUMBERS INDICATE MILLIMETRES  
DECIMALIZED NUMBERS INDICATE METRES

**WARNING**

IF POWER EQUIPMENT OR EXPLOSIVES ARE TO BE USED FOR EXCAVATION ON THIS PROJECT THE CONTRACTOR MUST:  
1) NOTIFY THE GAS COMPANY OF THE PROPOSED LOCATION OF EXCAVATION.  
2) TAKE PRECAUTION TO AVOID DAMAGE TO GAS COMPANY INSTALLATIONS.  
SEE PROVINCIAL REGULATION 140/92 FOR DETAILS



150 WM	WATERMAIN	150 WM	HYDRO	
HYDRANT			M.T.S.	
VALVE			CONCRETE	
300 LDS	LAND DRAINAGE SEWER	300 LDS	ASPHALT	
250 WWS	WASTE WATER SEWER	250 WWS	SIDEWALK	
MANHOLE			PROPERTY LINE	
CATCH BASIN			SURVEY BAR	
CURB INLET			DITCH	
JUNCTIONS		(31.334)	ELEVATION	(32.231)
CULVERT			SIDEWALK RAMP	
GAS			GRANULAR	
EXISTING	LEGEND-PLAN	PROPOSED	EXISTING	LEGEND-PLAN
				PROPOSED

**LOCATION APPROVED UNDERGROUND STRUCTURES**

SUPV. U/G STRUCTURES DATE COMMITTEE

**NOTE:**  
LOCATION OF UNDERGROUND STRUCTURES AS SHOWN ARE BASED ON THE BEST INFORMATION AVAILABLE BUT NO GUARANTEE IS GIVEN THAT ALL EXISTING UTILITIES ARE SHOWN OR THAT THE GIVEN LOCATIONS ARE EXACT. CONFIRMATION OF EXISTENCE AND EXACT LOCATION OF ALL SERVICES MUST BE OBTAINED FROM THE INDIVIDUAL UTILITIES BEFORE PROCEEDING WITH CONSTRUCTION.

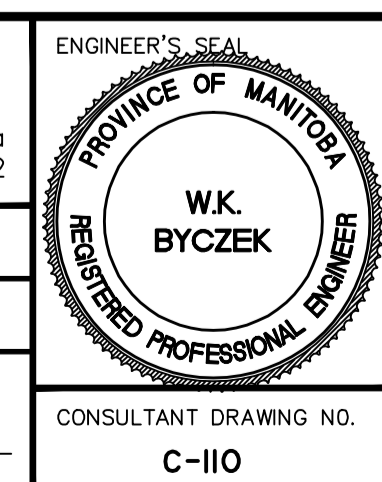
B.M. 54-017	ELEV.	
0	ISSUED FOR REVIEW	10.0X.XX W.K.B.
NO.	REVISIONS	DATE BY
		DATE 10.02.08

**Stantec Consulting Ltd.**  
905 Waverley Street, Winnipeg, Manitoba  
Tel 204-489-5900 Fax 204-453-9012

DESIGNED BY: W.K.B. CHECKED BY: W.K.B.  
DRAWN BY: R.P.V. APPROVED BY: W.K.B.

HOR. SCALE: 1:150H  
VERTICAL: N/A

RELEASED FOR CONSTRUCTION: \_\_\_\_\_  
DATE: \_\_\_\_\_



**THE CITY OF WINNIPEG**  
PUBLIC WORKS DEPARTMENT  
ENGINEERING DIVISION

2010 AT INFRASTRUCTURE STIMULUS PROGRAM  
EUGENIE/DES MEURONS BIKEWAY  
INTERSECTION OF KENNY STREET & EUGENIE STREET  
INTERSECTION MODIFICATION

SHEET II OF 14  
CAD FILE DRAWING NUMBER 05260c-110-XXX  
CITY DRAWING NUMBER W-375-11

V:\117\winnipeg\1170260\winnipeg\w02\_dwg\winnipeg\1170260c-110-xxx.dwg  
2010-05-10 02:45PM By: j.miller