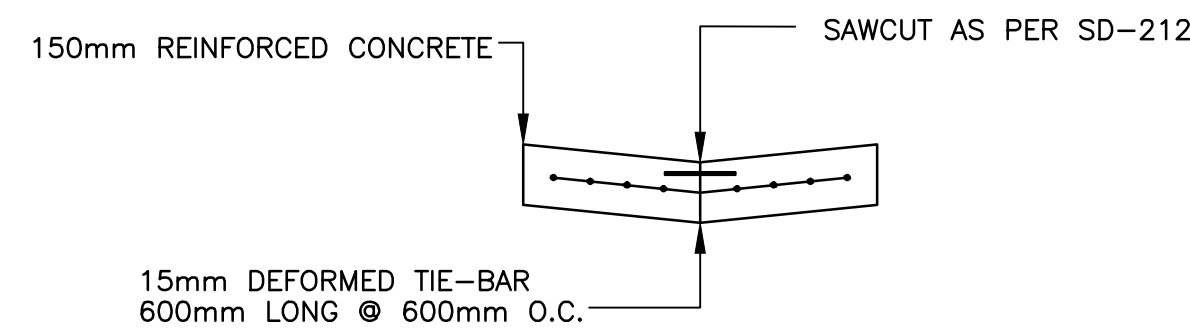
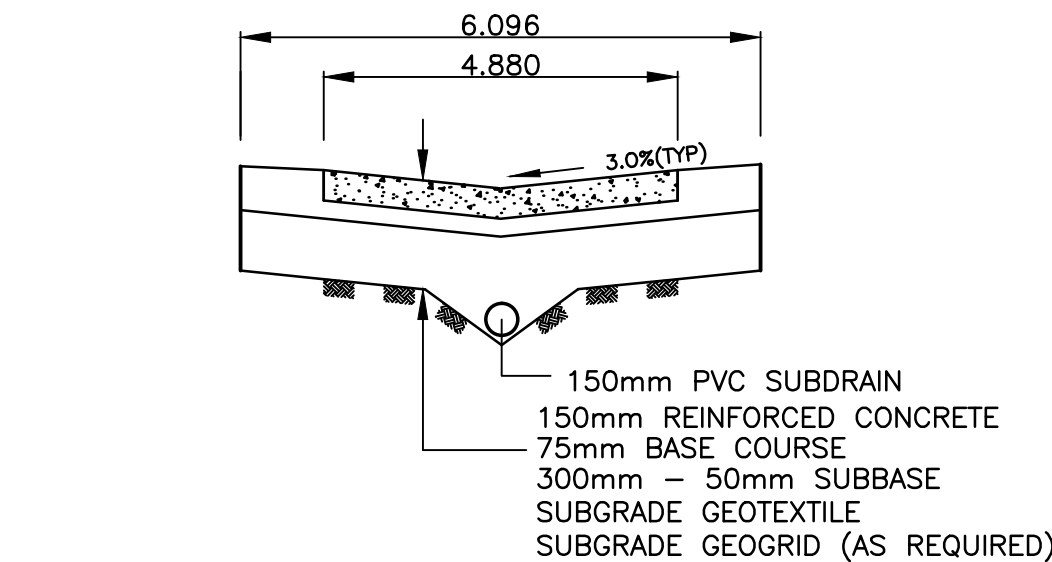


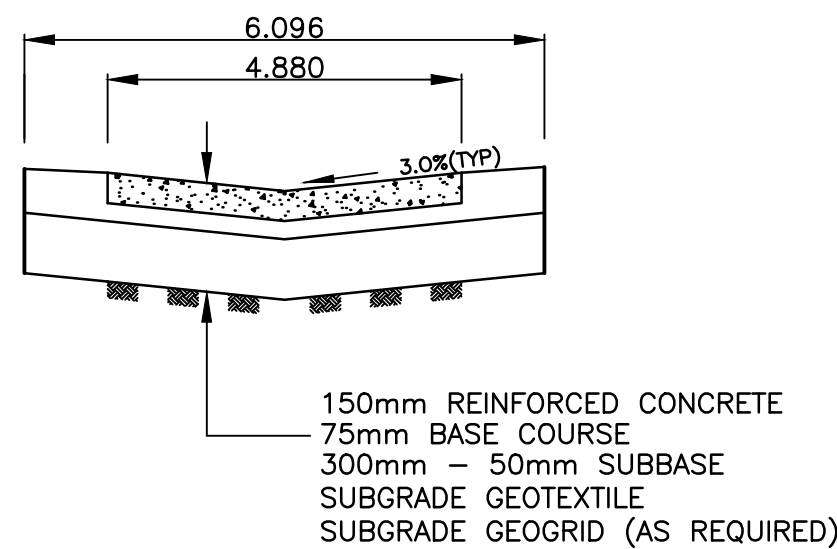
- NOTES:**
1. ISOLATE EXISTING HYDRO POLES AS DIRECTED BY CONTRACT ADMINISTRATOR
  2. RENEW EXISTING APPROACHES AS DIRECTED BY CONTRACT ADMINISTRATOR
  3. EXTEND SUBDRAINS AS DIRECTED BY CONTRACT ADMINISTRATOR
  4. ADDITIONAL EXCAVATION AND INSTALLATION OF SUBGRADE GEOGRID TO BE DETERMINED BY CONTRACT ADMINISTRATOR



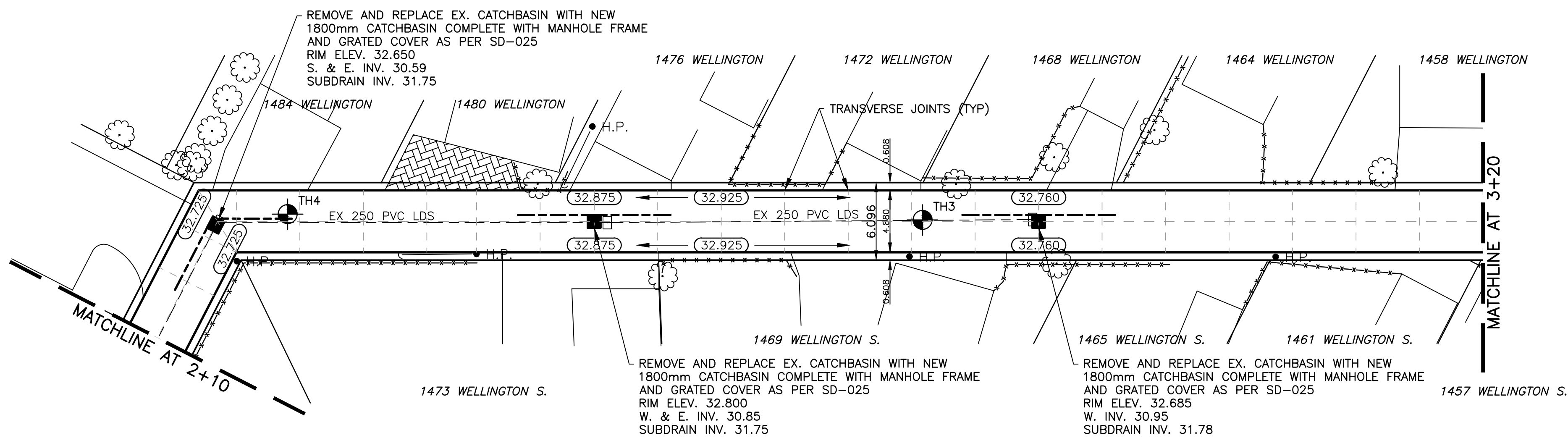
**TYPICAL PAVEMENT CROSS SECTION**  
N.T.S.



**TYPICAL ALLEY CROSS SECTION WITH SUBDRAIN**  
N.T.S.



**TYPICAL ALLEY CROSS SECTION**  
N.T.S.



**BENCHMARK:**  
TBLT. IN 3.0m CONC. PILE BENEATH VALVE BOX MARKED B.M., BTWN. LOCKWOOD ST. & CENTENNIAL ST., 9.7m E. OF C.L. TRACK & 17.6m N. OF S.L. ACADEMY RD.

INSTALL PVC SUBDRAIN BETWEEN  
STA. 2+14 AND 2+21 AND  
STA. 2+44 AND 2+56 AND  
STA. 2+79 AND 2+91

**METRIC**  
WHOLE NUMBERS INDICATE MILLIMETRES  
DECIMALIZED NUMBERS INDICATE METRES

EXISTING	LEGEND - PLAN	PROPOSED	EXISTING	LEGEND - PLAN	PROPOSED	EXISTING	LEGEND - PROFILE	PROPOSED
---	WATERMAIN	---	---	HYDRO	---	---	CENTER LINE	---
⊙	HYDRANT	⊙	---	M.T.S.	---	---	NORTH/WEST GUTTER	---
⊙	VALVE	⊙	---	CONCRETE	---	---	SOUTH/EAST GUTTER	---
---	LAND DRAINAGE SEWER	---	---	ASPHALT	---	---	WATERMAIN	---
---	WASTE WATER SEWER	---	---	PROPERTY LINE	---	---	VALVE	---
○	MANHOLE	⊕	---	SURVEY BAR	---	---	LAND DRAINAGE SEWER	---
□	CATCH BASIN	⊕	---	CURB STOP	---	---	WASTE WATER SEWER	---
△	CURB INLET	---	---	C.B. LEAD	---	---	TESTHOLE	---
---	TRAFFIC SIGNAL	---	---	SIDEWALK RAMP	---	---	ASPH./CONC. PAD	---
---	STEAM HT.	---	---	ELEVATIONS	---	---	GARAGE PAD	---
---	GAS	---	---		---	---		---

**LOCATION APPROVED**

SUPV. U/G STRUCTURES COMMITTEE DATE

**NOTE:**  
LOCATION OF UNDERGROUND STRUCTURES AS SHOWN ARE BASED ON THE BEST INFORMATION AVAILABLE BUT NO GUARANTEE IS GIVEN THAT ALL EXISTING UTILITIES ARE SHOWN OR THAT THE GIVEN LOCATIONS ARE EXACT. CONFIRMATION OF EXISTENCE AND EXACT LOCATION OF ALL SERVICES MUST BE OBTAINED FROM THE INDIVIDUAL UTILITIES BEFORE PROCEEDING WITH CONSTRUCTION.

NO.	REVISIONS	DATE	BY
2	BID SUBMISSION	05/10	R.H.
1	APPROVAL SUBMISSION	04/10	R.H.

<b>GENIVAR</b> 10 PRAIRIE WAY WINNIPEG, MANITOBA R2J 3J8 PH: (204)-477-8650 FAX: (204)-474-2864	
DESIGNED BY R.H.	CHECKED BY S.M.
DRAWN BY R.H.	APPROVED BY I.McK.
HOR. SCALE: 1:250	RELEASED FOR CONSTRUCTION
VERT. SCALE: 1:10	DATE
DATE APRIL 2010	DATE

ENGINEERS SEAL <b>I. G. MCKINNON</b> REGISTERED PROFESSIONAL ENGINEER
CONSULTANT DRAWING NO. 09-151-04

<b>THE CITY OF WINNIPEG</b> PUBLIC WORKS DEPARTMENT	
<b>2010 ALLEY RENEWALS</b> <b>WELLINGTON CRES. SOUTH ALLEY</b> <b>LANE PAVEMENT</b>	
CITY DRAWING NO. SHEET 2 OF 3	390-2010
FROM MATCHLINE AT STATION 2+10 TO MATCHLINE AT STATION 3+20	