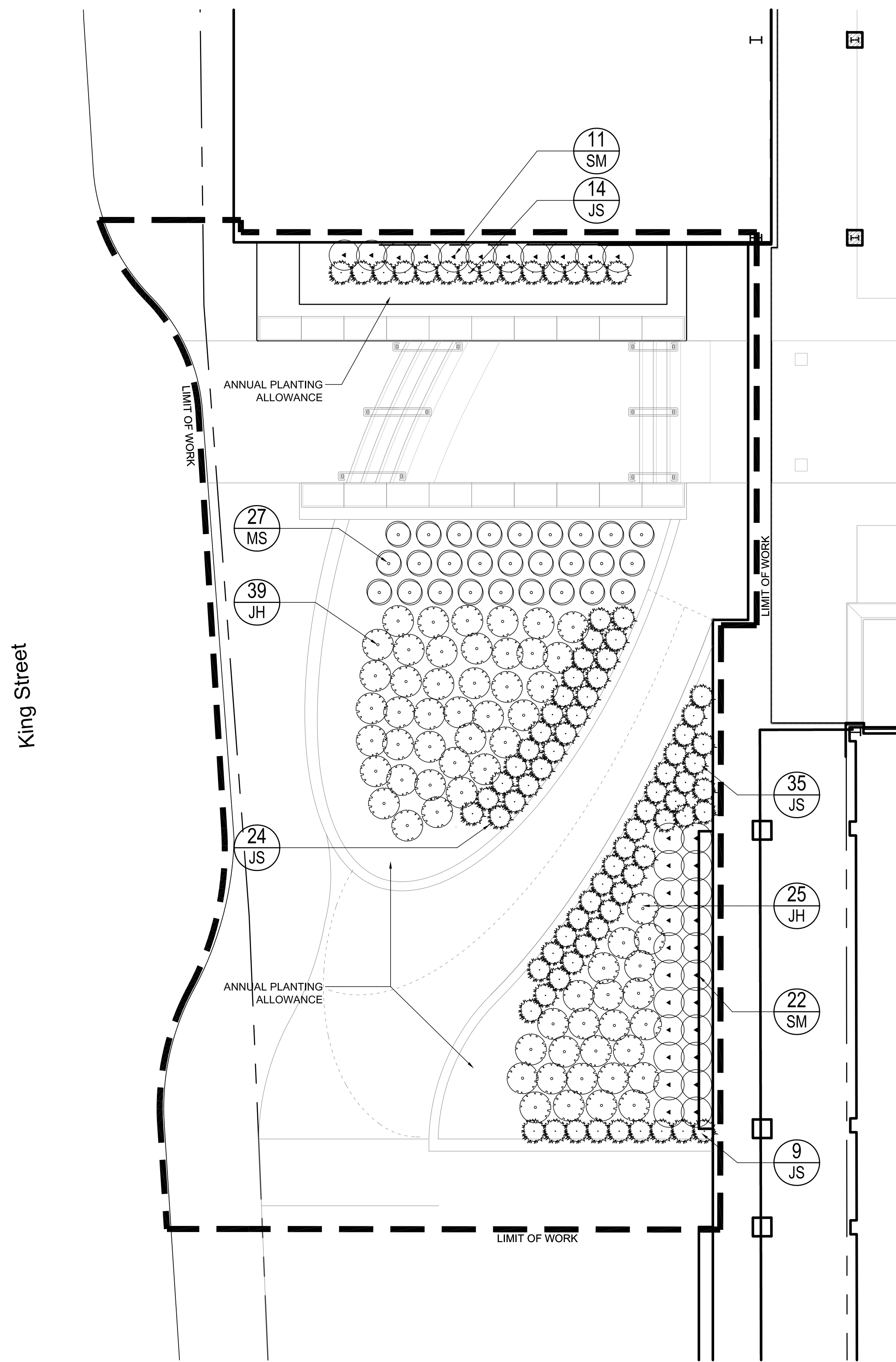


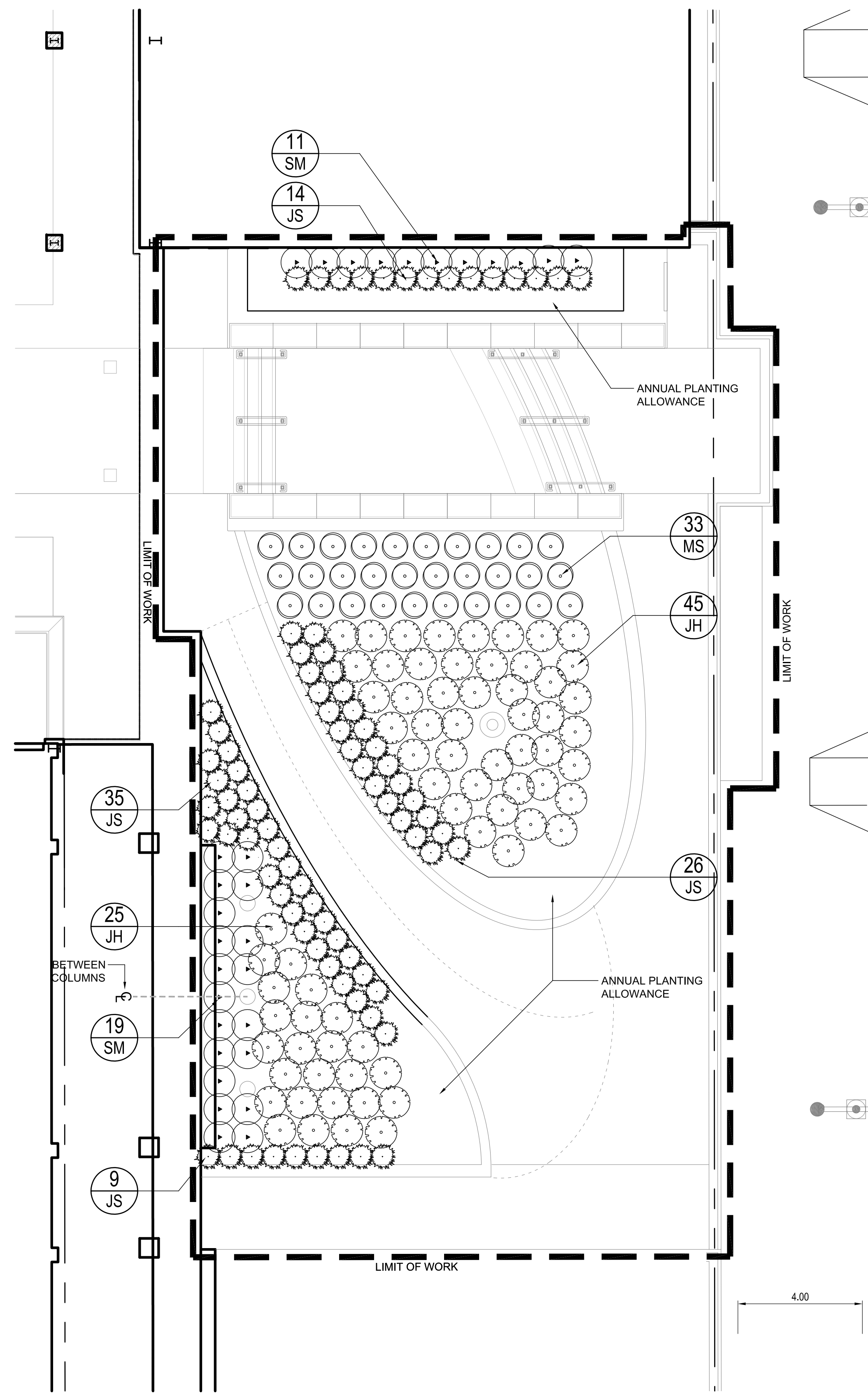
sheet size - Super A1 24" x 36" plot scale - 1:100 CAD File Name: 2007_city_hall_courtyard_005_planting.dwg



1 PLANTING PLAN - WEST
L05 1:100

PLANT LIST (WEST)

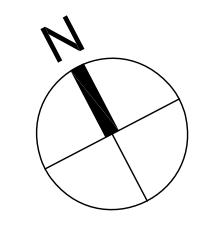
REF	QTY	COMMON NAME	BOTANICAL NAME	SUPPLY SIZE	SPACING
JS	82	CALGARY CARPET JUNIPER	<i>Juniperus sabina</i> 'Calgary Carpet'	#3 CONTAINER, MIN 50cm SPREAD, MIN 4 CANES	700mm
JH	64	BLUE RUG JUNIPER	<i>Juniperus horizontalis</i> 'Wiltonii'	#3 CONTAINER, MIN 60cm SPREAD, MIN 4 CANES	+/-1100mm
MS	27	AUTUMN RED MAIDEN GRASS	<i>Miscanthus sinensis</i> 'Autumn Red'	#2 CONTAINER, 20-25cm DIAMETER	1000mm
SM	33	DWARF KOREAN LILAC	<i>Syringa meyeri</i> 'Palibin'	#3 CONTAINER, MIN 60cm HEIGHT, MIN 4 CANES	900mm



2 PLANTING PLAN - EAST
L05 1:100

PLANT LIST (EAST)

REF	QTY	COMMON NAME	BOTANICAL NAME	SUPPLY SIZE	SPACING
JS	84	CALGARY CARPET JUNIPER	<i>Juniperus sabina</i> 'Calgary Carpet'	#3 CONTAINER, MIN 50cm SPREAD, MIN 4 CANES	700mm
JH	70	BLUE RUG JUNIPER	<i>Juniperus horizontalis</i> 'Wiltonii'	#3 CONTAINER, MIN 60cm SPREAD, MIN 4 CANES	+/-1100mm
MS	30	AUTUMN RED MAIDEN GRASS	<i>Miscanthus sinensis</i> 'Autumn Red'	#2 CONTAINER, 20-25cm DIAMETER	1000mm
SM	30	DWARF KOREAN LILAC	<i>Syringa meyeri</i> 'Palibin'	#3 CONTAINER, MIN 60cm HEIGHT, MIN 4 CANES	900mm



NOTES:
 1. ALL PLANT MATERIAL IS TO BE GROWN IN NURSERIES UNDER PROPER CULTURAL PRACTICES AS RECOMMENDED BY THE CANADIAN NURSERY TRADE ASSOCIATION
 2. PLANTS ARE TO BE PLANTED AT THE QUANTITIES AND SIZES LISTED ON THE PLANT LIST(S). ANY VARIATION FROM THE SPECIFIED QUANTITY IS TO BE CLEARLY IDENTIFIED. ANY VARIATION TO SPECIES OR SIZE OF SPECIFIED PLANT WILL REQUIRE A REQUEST FOR APPROVAL FROM THE CONTRACT ADMINISTRATOR.

LEGEND:
 PLANT SYMBOL LABEL AND COUNT

REV	YY / MM / DD	DESCRIPTION	BY
1	10 / 05 / 27	LIMIT OF WORK REVISION	AR
0	10 / 05 / 13	ISSUE FOR TENDER	AR

A. SECTION LETTER OR DETAIL NUMBER.
 B. DRAWING WHERE SECTION OR DETAIL IS DRAWN.
 OR
 DRAWING WHERE SECTION OR DETAIL IS INDICATED.
 --- SECTION OR DETAIL SHOWN ON SAME DRAWING.

SEAL

 CHERYL OAKDEN
 member no. 61

SCATLIFF + MILLER + MURRAY Inc.
 TEL 204 927-3444 8-138 MARKET AVENUE
 FAX 204 927-3443 WINNIPEG, MB, CANADA

CLIENT
 CITY OF WINNIPEG
 PLANNING, PROPERTY and DEVELOPMENT
Winnipeg CIVIC ACCOMMODATIONS DIVISION

PROJECT
 COURTYARD UNIVERSAL
 ACCESS UPGRADE
 CITY HALL COURTYARD

TITLE
 PLANTING PLANS

DESIGN	DRAWN	DATE - Y / M / D	SCALE
AR	AR	2010/01/12	1:100
CHECKED	APPROVED	JOB NO.	DRAWING NO.
XXX	XXX	391-2010	L05