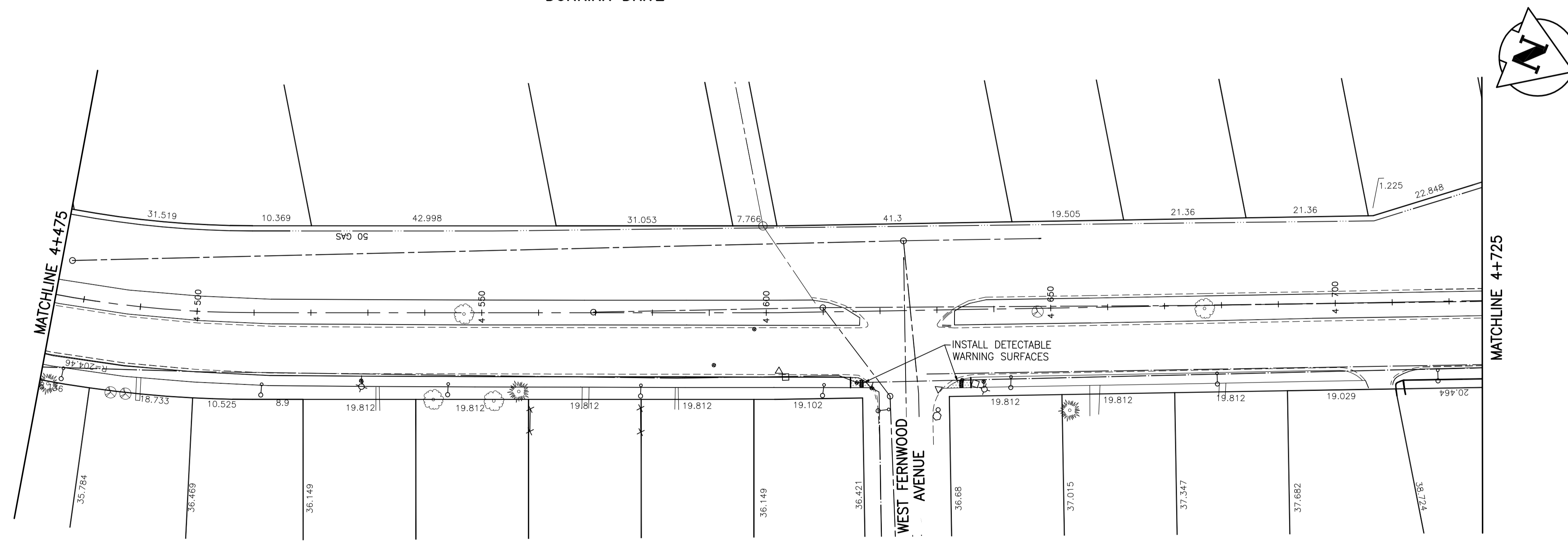


DUNKIRK DRIVE



WARNING

IF POWER EQUIPMENT OR EXPLOSIVES ARE TO BE USED FOR EXCAVATION ON THIS PROJECT THE CONTRACTOR MUST:
 1) NOTIFY THE GAS COMPANY OF THE PROPOSED LOCATION OF EXCAVATION.
 2) TAKE PRECAUTION TO AVOID DAMAGE TO GAS COMPANY INSTALLATIONS.
 SEE PROVINCIAL REGULATION 140/92 FOR DETAILS

METRIC

WHOLE NUMBERS INDICATE MILLIMETRES
 DECIMALIZED NUMBERS INDICATE METRES

PRELIMINARY
 NOT FOR CONSTRUCTION

APEGM
 Certificate of Authorization
 Stantec Consulting Ltd.
 No. 1301 Date: _____

EXISTING	LEGEND-PLAN	PROPOSED	EXISTING	LEGEND-PLAN	PROPOSED	EXISTING	LEGEND-PROFILE	PROPOSED
150 WM	WATERMAIN	150 WM	HYDRO	150 WM	WATERMAIN	300 LDS	WATERMAIN	300 LDS
300 LDS	LAND DRAINAGE SEWER	300 LDS	M.T.S.	300 LDS	HYDRANT, VALVE	250 WWS	LAND DRAINAGE SEWER	300 LDS
250 WWS	WASTE WATER SEWER	250 WWS	CONCRETE	250 WWS	LAND DRAINAGE SEWER	250 WWS	WASTE WATER SEWER	250 WWS
○	MANHOLE	●	ASPHALT	○	WASTE WATER SEWER	○	WASTE WATER SEWER	○
□	CATCH BASIN	■	SIDEWALK REMOVAL	□	WASTE WATER SEWER	○	WASTE WATER SEWER	○
▽	CURB INLET	▲	SIDEWALK	○	WASTE WATER SEWER	○	WASTE WATER SEWER	○
+	JUNCTIONS	+	PROPERTY LINE	○	WASTE WATER SEWER	○	WASTE WATER SEWER	○
▬▬▬	CULVERT	▬▬▬	SURVEY BAR	○	WASTE WATER SEWER	○	WASTE WATER SEWER	○
▬▬▬	GAS	▬▬▬	DITCH	○	WASTE WATER SEWER	○	WASTE WATER SEWER	○
▬▬▬	GAS	▬▬▬	ELEVATION	○	WASTE WATER SEWER	○	WASTE WATER SEWER	○
▬▬▬	GAS	▬▬▬	SIDEWALK RAMP	○	WASTE WATER SEWER	○	WASTE WATER SEWER	○

LOCATION APPROVED UNDERGROUND STRUCTURES

SUPV. U/G STRUCTURES COMMITTEE DATE

NOTE:
 LOCATION OF UNDERGROUND STRUCTURES AS SHOWN ARE BASED ON THE BEST INFORMATION AVAILABLE BUT NO GUARANTEE IS GIVEN THAT THE GIVEN LOCATIONS ARE EXACT. CONFIRMATION OF EXISTENCE AND EXACT LOCATION OF ALL SERVICES MUST BE OBTAINED FROM THE INDIVIDUAL UTILITIES BEFORE PROCEEDING WITH CONSTRUCTION.

B.M. ELEV.	NO.	REVISIONS	DATE	BY
	1	ISSUED FOR TENDER	07.05	S.R.S.
	0	ISSUED FOR REVIEW	06.28	S.R.S.

Stantec Consulting Ltd.
 905 Waverley Street, Winnipeg, Manitoba
 Tel 204-489-5900 Fax 204-453-9012

DESIGNED BY: S.R.S. CHECKED BY: V.M.M.
 DRAWN BY: T.G. APPROVED BY: S.R.S.

HOR. SCALE: 1:500
 VERTICAL: 1:20

RELEASED FOR CONSTRUCTION: _____
 DATE: _____

DATE: 10.04.22

ENGINEER'S SEAL

CONSULTANT DRAWING NO.
C-226

THE CITY OF WINNIPEG
 PUBLIC WORKS DEPARTMENT
 ENGINEERING DIVISION

DAKOTA/DUNKIRK PATHWAY PH I
 BISHOP GRANDIN BOULEVARD TO FERMOR AVENUE
 STA. 4+475 TO STA. 4+725
 2010 ACTIVE TRANSPORTATION
 INFRASTRUCTURE STIMULUS PROGRAM

SHEET 9 OF 15
 CAD FILE DRAWING NUMBER 05260c-210-xxx.dwg
 CITY DRAWING NUMBER W-379-09