

NOTE: CHAINAGES SHOWN ARE ALONG E.P. OF ASH ST

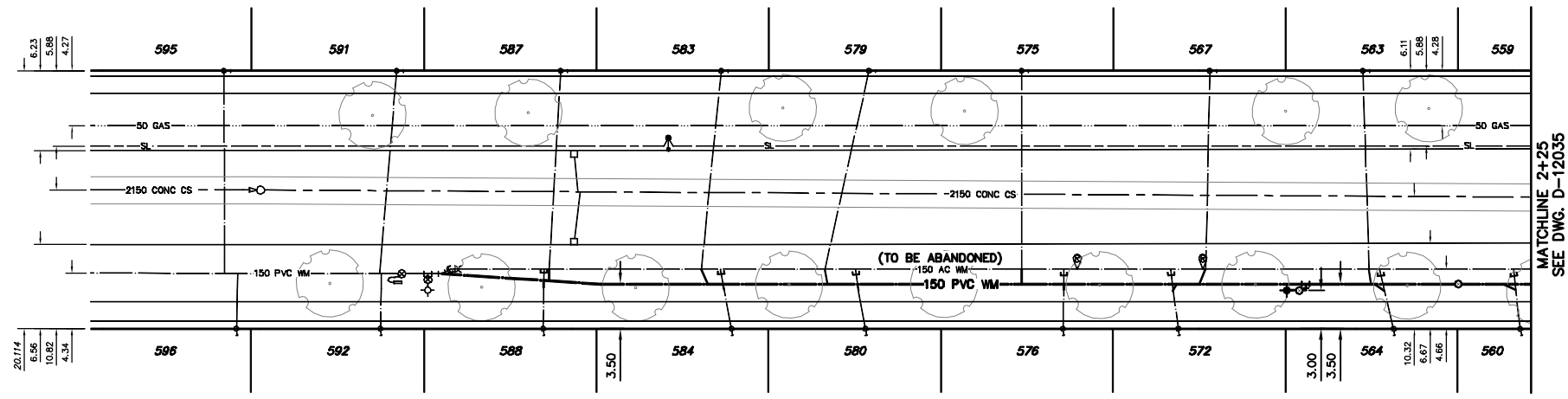
ASH STREET



WATER SERVICE INFORMATION

ADDRESS	SIZE(mm) & TYPE (STREET)	SIZE(mm) & TYPE (PROP)	SHORT & LONG MEASUREMENT	CORP. LOCATION	
559 ASH ST	20	20	2.13 NSL HSE	1.1 S OF S/C	RECONNECT SERVICE
RESIDENTIAL	COPPER	COPPER	67.19 SSL CORYDON		
560 ASH ST	20	20	2.62 NSL HSE	0.5 S OF S/C	RECONNECT SERVICE
RESIDENTIAL	COPPER	COPPER	75.88 SSL CORYDON		
563 ASH ST	20	20	2.82 NSL HSE	0.5 N OF S/C	RECONNECT SERVICE
RESIDENTIAL	COPPER	COPPER	88.22 SSL CORYDON		
564 ASH ST	20	20	3.16 NSL HSE	1.2 S OF S/C	RECONNECT SERVICE
RESIDENTIAL	COPPER	COPPER	85.77 SSL CORYDON		
567 ASH ST	20	20	4.84 NSL HSE	0.3 S OF S/C	RECONNECT SERVICE
RESIDENTIAL	COPPER	COPPER	100.05 SSL CORYDON		
572 ASH ST	20	20	2.22 NSL HSE	0.6 S OF S/C	RECONNECT SERVICE
RESIDENTIAL	COPPER	COPPER	102.53 SSL CORYDON		
575 ASH ST	20	20	3.91 NSL HSE	OPP S/C	RECONNECT SERVICE
RESIDENTIAL	COPPER	COPPER	114.75 SSL CORYDON		
576 ASH ST	20	20	2.62 NSL HSE	OPP S/C	RECONNECT SERVICE
RESIDENTIAL	COPPER	COPPER	111.49 SSL CORYDON		
579 ASH ST	20	20	4.10 NSL HSE	3.4 S OF S/C	RECONNECT SERVICE
RESIDENTIAL	COPPER	COPPER	128.40 SSL CORYDON		
580 ASH ST	20	20	3.98 NSL HSE	0.8 S OF S/C	RECONNECT SERVICE
RESIDENTIAL	COPPER	COPPER	126.83 SSL CORYDON		
583 ASH ST	20	20	2.26 NSL HSE	1.5 S OF S/C	RECONNECT SERVICE
RESIDENTIAL	COPPER	COPPER	138.28 SSL CORYDON		
584 ASH ST	20	20	0.65 NSL HSE	0.9 S OF S/C	RECONNECT SERVICE
RESIDENTIAL	COPPER	COPPER	137.38 SSL CORYDON		
587 ASH ST	20	20	1.49 NSL HSE	0.9 S OF S/C	RECONNECT SERVICE
RESIDENTIAL	COPPER	COPPER	150.76 SSL CORYDON		
588 ASH ST	20	20	0.95 NSL HSE	0.1 N OF S/C	RECONNECT SERVICE
RESIDENTIAL	COPPER	COPPER	152.02 SSL CORYDON		

*SERVICES TO BE RENEWED TO E.P. ALL OTHERS TO BE RECONNECTED



CONSTRUCTION NOTES

1. EXPOSE EXISTING WATERMAIN & CONFIRM INVERTS PRIOR TO CONSTRUCTION.
2. LOCATION OF ALL SERVICES TO BE CONFIRMED IN THE FIELD.
3. INSTALL WATERMAIN BY TRENCHLESS METHODS.
4. TRENCHES AND EXCAVATIONS WITHIN 1 METRE OF A PAVED AREA INCLUDING SIDEWALKS SHALL BE CLASS 3 BACKFILL.
5. ALL MATERIALS SHALL CONFORM TO THE CITY OF WINNIPEG STANDARD CONSTRUCTION SPECIFICATIONS.
6. MINIMUM COVER TO TOP OF WATERMAIN SHALL BE 2.4 m.
7. REPLACE ALL EXISTING LEAD SERVICES FROM PROPOSED WATERMAIN TO E.P.
8. NOTIFY ALL AFFECTED RESIDENTS AND BUSINESSES 24 HOURS IN ADVANCE OF ANY WATER SHUTDOWNS OR DISRUPTION OF SERVICE.

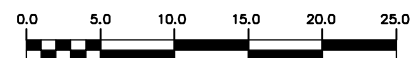
METRIC

WHOLE NUMBERS INDICATE MILLIMETRES
DECIMALIZED NUMBERS INDICATE METRES

NOTE: ALL VALVES TO BE INSTALLED COUNTERCLOCKWISE TO CLOSE

WARNING

IF POWER EQUIPMENT OR EXPLOSIVES ARE TO BE USED FOR EXCAVATION ON THIS PROJECT THE CONTRACTOR MUST:
1) NOTIFY THE GAS COMPANY OF THE PROPOSED LOCATION OF EXCAVATION.
2) TAKE PRECAUTION TO AVOID DAMAGE TO GAS COMPANY INSTALLATIONS.
SEE PROVINCIAL REGULATION 210/72 FOR DETAILS



EXISTING	LEGEND-PLAN	PROPOSED	EXISTING	LEGEND-PLAN	PROPOSED	EXISTING	LEGEND-PROFILE	PROPOSED
200 WM	WATERMAIN	200 WM	SL, HYDRO	SL, HYDRO	150 WM	WATERMAIN	150 WM	
Hydrant symbol	HYDRANT	Hydrant symbol	MTS	MTS	Hydrant symbol	HYDRANT	Hydrant symbol	
Valve symbol	VALVE	Valve symbol	TRAFFIC SIGNALS	TRAFFIC SIGNALS	Valve symbol	VALVE	Valve symbol	
525 LDS	LAND DRAINAGE SEWER	525 LDS	GAS	GAS	300 LDS	LAND DRAINAGE SEWER	300 LDS	
375 WWS	WASTEWATER SEWER	375 WWS	SURVEY BAR	SURVEY BAR	250 WWS	WASTEWATER SEWER	250 WWS	
Manhole symbol	MANHOLE	Manhole symbol	FENCE	FENCE	Profile symbol	PROFILE	Profile symbol	
Catch basin symbol	CATCH BASIN	Catch basin symbol	POLE - HYDRO, MTS	POLE - HYDRO, MTS	Ground above pipe symbol	GROUND ABOVE PIPE	Ground above pipe symbol	
Curb inlet symbol	CURB INLET	Curb inlet symbol	CURB STOP	CURB STOP	Ditch symbol	DITCH (NORTH & WEST)	Ditch symbol	
Reducer symbol	REDUCER	Reducer symbol	GUY ANCHOR	GUY ANCHOR	Ditch symbol	DITCH (SOUTH & EAST)	Ditch symbol	
Coupler symbol	COUPLER	Coupler symbol	LIGHT STANDARD	LIGHT STANDARD	Gutter symbol	GUTTER (NORTH & WEST)	Gutter symbol	
Anode symbol	ANODE	Anode symbol	TREE	TREE	Gutter symbol	GUTTER (SOUTH & EAST)	Gutter symbol	

LOCATION APPROVED UNDERGROUND STRUCTURES

NOTE: LOCATION OF UNDERGROUND STRUCTURES AS SHOWN ARE BASED ON THE BEST INFORMATION AVAILABLE BUT NO GUARANTEE IS GIVEN THAT ALL EXISTING UTILITIES ARE SHOWN OR THAT THE GIVEN LOCATIONS ARE EXACT. CONFIRMATION OF EXISTENCE AND EXACT LOCATION OF ALL SERVICES MUST BE OBTAINED FROM THE INDIVIDUAL UTILITIES BEFORE PROCEEDING WITH CONSTRUCTION.

B.M. ELEV.	FIELD BOOK #:
POSTED TO LIS:	
NO.	REVISIONS
DATE	BY

CITY OF WINNIPEG
WATER AND WASTE
ENGINEERING DIVISION

DESIGNED BY: MKG
CHECKED BY: SC

DRAWN BY: CJH
APPROVED BY: SC

HOR. SCALE: 1:250
VERTICAL: 1:50

RELEASED FOR CONSTRUCTION
DATE: 2010 06 02

ENGINEER'S SEAL
ORIGINAL MYLAR SIGNED BY S.R.J. COURNOYER 02/06/10

THE CITY OF WINNIPEG
WATER AND WASTE DEPARTMENT

2010 WATERMAIN RENEWALS
CONTRACT 6
ASH STREET
187.50 S OF CORYDON AVENUE TO
75 S OF CORYDON AVENUE

SHEET 1 OF 10
CITY DRAWING NUMBER
D-12034