

NOTE: CHAINAGES SHOWN ARE ALONG E R OF ASH ST

WATER SERVICE INFORMATION				
ADDRESS	SIZE(mm) & TYPE (STREET)	SIZE(mm) & TYPE (PROP)	SHORT & LONG MEASUREMENT	CORP. LOCATION
539 ASH ST	20	20	1.78 NSL HSE	OPP S/C
540 ASH ST	20	20	9.91 SSL CORYDON	RECONNECT SERVICE
543 ASH ST	20	20	3.76 NSL HSE	OPP S/C
544 ASH ST	20	20	7.48 SSL CORYDON	RECONNECT SERVICE
547 ASH ST	20	20	5.22 NSL HSE	OPP S/C
548 ASH ST	20	20	18.94 SSL CORYDON	RECONNECT SERVICE
551 ASH ST	20	20	3.15 NSL HSE	0.5 S OF S/C
552 ASH ST	20	20	18.61 SSL CORYDON	RECONNECT SERVICE
555 ASH ST	20	20	3.38 NSL HSE	0.9 S OF S/C
558 ASH ST	20	20	34.24 SSL CORYDON	RECONNECT SERVICE
559 ASH ST	20	20	0.49 NSL HSE	OPP S/C
560 ASH ST	20	20	28.18 SSL CORYDON	RECONNECT SERVICE
561 ASH ST	20	20	1.45 NSL HSE	OPP S/C
562 ASH ST	20	20	41.04 SSL CORYDON	RECONNECT SERVICE
565 ASH ST	20	20	0.91 NSL HSE	0.9 S OF S/C
566 ASH ST	20	20	42.47 SSL CORYDON	RECONNECT SERVICE
567 ASH ST	20	20	0.73 NSL HSE	OPP S/C
568 ASH ST	20	20	54.41 SSL CORYDON	RECONNECT SERVICE
569 ASH ST	20	20	1.09 NSL HSE	0.6 S OF S/C
570 ASH ST	20	20	63.58 SSL CORYDON	RENEW TO R W/20 COPPER
571 ASH ST	20	20	2.13 NSL HSE	1.1 S OF S/C
572 ASH ST	20	20	67.19 SSL CORYDON	RECONNECT SERVICE
573 ASH ST	20	20	2.62 NSL HSE	0.5 S OF S/C
574 ASH ST	20	20	75.88 SSL CORYDON	RECONNECT SERVICE

\* SERVICES TO BE RENEWED TO R ALL OTHERS TO BE RECONNECTED

- CONSTRUCTION NOTES**
1. EXPOSE EXISTING WATERMAIN & CONFIRM INVERTS PRIOR TO CONSTRUCTION.
  2. LOCATION OF ALL SERVICES TO BE CONFIRMED IN THE FIELD.
  3. INSTALL WATERMAIN BY TRENCHLESS METHODS.
  4. TRENCHES AND EXCAVATIONS WITHIN 1 METRE OF A PAVED AREA INCLUDING SIDEWALKS SHALL BE CLASS 3 BACKFILL.
  5. ALL MATERIALS SHALL CONFORM TO THE CITY OF WINNIPEG STANDARD CONSTRUCTION SPECIFICATIONS.
  6. MINIMUM COVER TO TOP OF WATERMAIN SHALL BE 2.4 m.
  7. REPLACE ALL EXISTING LEAD SERVICES FROM PROPOSED WATERMAIN TO R.
  8. NOTIFY ALL AFFECTED RESIDENTS AND BUSINESSES 24 HOURS IN ADVANCE OF ANY WATER SHUTDOWNS OR DISRUPTION OF SERVICE.

**METRIC**  
WHOLE NUMBERS INDICATE MILLIMETRES  
DECIMALIZED NUMBERS INDICATE METRES

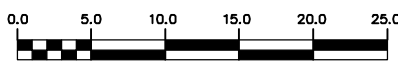
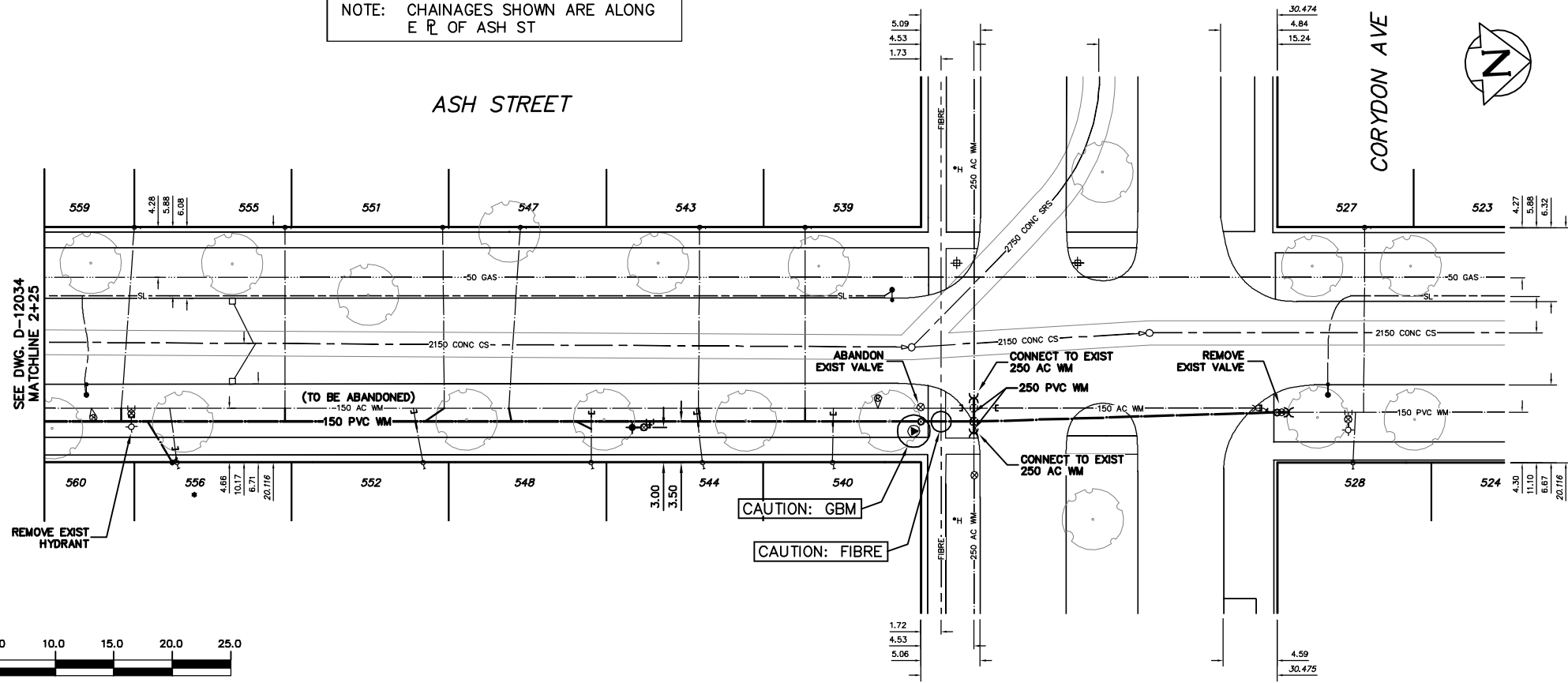
NOTE: ALL VALVES TO BE INSTALLED COUNTERCLOCKWISE TO CLOSE

**WARNING**

IF POWER EQUIPMENT OR EXPLOSIVES ARE TO BE USED FOR EXCAVATION ON THIS PROJECT THE CONTRACTOR MUST:

- 1) NOTIFY THE GAS COMPANY OF THE PROPOSED LOCATION OF EXCAVATION.
- 2) TAKE PRECAUTION TO AVOID DAMAGE TO GAS COMPANY INSTALLATIONS.

SEE PROVINCIAL REGULATION 210/72 FOR DETAILS



EXISTING	LEGEND-PLAN	PROPOSED	EXISTING	LEGEND-PLAN	PROPOSED	EXISTING	LEGEND-PROFILE	PROPOSED
200 WM	WATERMAIN	200 WM	SL, HYDRO	150 WM	WATERMAIN	150 WM	LOCATION APPROVED	
HYDRANT	HYDRANT	MTS	TRAFFIC SIGNALS	HYDRANT	HYDRANT	UNDERGROUND STRUCTURES		
VALVE	VALVE	GAS	50 GAS	VALVE	VALVE			
525 LDS	LAND DRAINAGE SEWER	525 LDS	50 GAS	300 LDS	LAND DRAINAGE SEWER	300 LDS		
375 WWS	WASTEWATER SEWER	375 WWS	SURVEY BAR	250 WWS	WASTEWATER SEWER	250 WWS		
MANHOLE	MANHOLE	FENCE	POLE - HYDRO, MTS	PROFILE	PROFILE			
CATCH BASIN	CATCH BASIN	CURB STOP	CURB STOP	GROUND ABOVE PIPE	GROUND ABOVE PIPE			
CURB INLET	CURB INLET	GUY ANCHOR	GUY ANCHOR	DITCH (NORTH & WEST)	DITCH (NORTH & WEST)			
REDUCER	REDUCER	LIGHT STANDARD	LIGHT STANDARD	DITCH (SOUTH & EAST)	DITCH (SOUTH & EAST)			
COUPLER	COUPLER	TREE	TREE	GUTTER (NORTH & WEST)	GUTTER (NORTH & WEST)			
ANODE	ANODE			GUTTER (SOUTH & EAST)	GUTTER (SOUTH & EAST)			

FIELD BOOK #:	
POSTED TO LBS:	
DESIGNED BY:	MKG
CHECKED BY:	SC
DRAWN BY:	CJH
APPROVED BY:	SC
HOR. SCALE:	1:250
VERTICAL SCALE:	1:50
RELEASED FOR CONSTRUCTION:	
DATE:	2010 06 02
NO. REVISIONS:	
DATE:	
BY:	

**CITY OF WINNIPEG**  
**WATER AND WASTE**  
**ENGINEERING DIVISION**

DESIGNED BY: MKG  
CHECKED BY: SC  
DRAWN BY: CJH  
APPROVED BY: SC

HOR. SCALE: 1:250  
VERTICAL SCALE: 1:50  
RELEASED FOR CONSTRUCTION  
DATE: 2010 06 02

ENGINEER'S SEAL

ORIGINAL MYLAR SIGNED BY  
S.R.J. COURNOYER  
02/06/10

**THE CITY OF WINNIPEG**  
**WATER AND WASTE DEPARTMENT**

2010 WATERMAIN RENEWALS  
CONTRACT 6  
ASH STREET  
75 S OF CORYDON AVENUE TO  
CORYDON AVENUE

SHEET 2 OF 10  
CITY DRAWING NUMBER  
D-12035

BID OPPORTUNITY 397-2010  
FILENAME: D-12035.dwg  
PLOT DATE: 2010 06 03