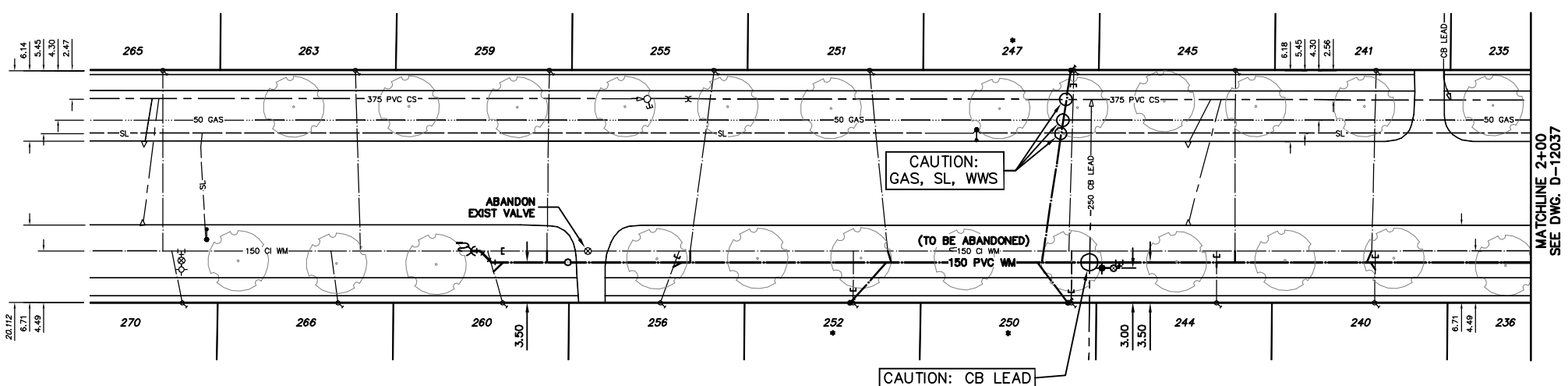


NOTE: CHAINAGES SHOWN ARE ALONG E L OF CORDOVA ST

WATER SERVICE INFORMATION					
ADDRESS	SIZE(mm) & TYPE (STREET)	SIZE(mm) & TYPE (PROP)	SHORT & LONG MEASUREMENT	CORP. LOCATION	
235 CORDOVA ST	20 COPPER	20 COPPER	3.55 SNL HSE	OPP S/C	RECONNECT SERVICE
236 CORDOVA ST	20 COPPER	12 COPPER	96.18 SSL KINGSWAY	OPP S/C	RECONNECT SERVICE
240 CORDOVA ST	20 COPPER	12 COPPER	4.61 SNL HSE	0.1 N OF S/C	RECONNECT SERVICE
241 CORDOVA ST	20 COPPER	16 COPPER	113.44 SSL KINGSWAY	0.4 S OF S/C	RECONNECT SERVICE
244 CORDOVA ST	20 COPPER	12 COPPER	3.40 SNL HSE	OPP S/C	RECONNECT SERVICE
245 CORDOVA ST	20 COPPER	20 COPPER	113.48 SSL KINGSWAY	OPP S/C	RECONNECT SERVICE
247 CORDOVA ST	20 COPPER	12 COPPER	127.14 SSL KINGSWAY	OPP S/C	RECONNECT SERVICE
250 CORDOVA ST	20 COPPER	20 COPPER	1.86 SNL HSE	0.4 S OF S/C	RENEW TO R W/20 COPPER
251 CORDOVA ST	20 COPPER	20 COPPER	128.47 SSL KINGSWAY	OPP S/C	RENEW TO R W/20 COPPER
252 CORDOVA ST	20 COPPER	12 COPPER	1.36 SNL HSE	0.4 S OF S/C	RECONNECT SERVICE
255 CORDOVA ST	20 COPPER	20 COPPER	139.56 SSL KINGSWAY	OPP S/C	RECONNECT SERVICE
256 CORDOVA ST	20 COPPER	20 COPPER	0.31 SNL HSE	1.5 N OF S/C	RECONNECT SERVICE
257 CORDOVA ST	20 COPPER	20 COPPER	139.80 SSL KINGSWAY	OPP S/C	RECONNECT SERVICE
258 CORDOVA ST	20 COPPER	20 COPPER	3.88 SNL HSE	1.5 N OF S/C	RECONNECT SERVICE
259 CORDOVA ST	20 COPPER	20 COPPER	157.30 SSL KINGSWAY	OPP S/C	RECONNECT SERVICE
260 CORDOVA ST	20 COPPER	12 COPPER	4.00 SNL HSE	OPP S/C	RECONNECT SERVICE
261 CORDOVA ST	20 COPPER	20 COPPER	158.53 SSL KINGSWAY	OPP S/C	RECONNECT SERVICE
262 CORDOVA ST	20 COPPER	12 COPPER	1.62 SNL HSE	2.0 S OF S/C	RECONNECT SERVICE
263 CORDOVA ST	20 COPPER	12 COPPER	170.63 SSL KINGSWAY	OPP S/C	RECONNECT SERVICE
264 CORDOVA ST	20 COPPER	12 COPPER	4.63 SNL HSE	1.7 N OF S/C	RECONNECT SERVICE
265 CORDOVA ST	20 COPPER	12 COPPER	175.50 SSL KINGSWAY	OPP S/C	RECONNECT SERVICE
266 CORDOVA ST	20 COPPER	12 COPPER	1.44 SNL HSE	0.2 S OF S/C	RECONNECT SERVICE
267 CORDOVA ST	20 COPPER	12 COPPER	184.99 SSL KINGSWAY	OPP S/C	RECONNECT SERVICE
268 CORDOVA ST	20 COPPER	12 COPPER	3.29 SNL HSE	1.3 S OF S/C	RECONNECT SERVICE
269 CORDOVA ST	20 COPPER	12 COPPER	189.05 SSL KINGSWAY	OPP S/C	RECONNECT SERVICE

*SERVICES TO BE RENEWED TO R ALL OTHERS TO BE RECONNECTED

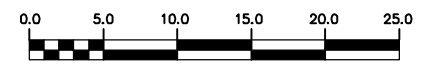
CORDOVA STREET



- CONSTRUCTION NOTES**
1. EXPOSE EXISTING WATERMAIN & CONFIRM INVERTS PRIOR TO CONSTRUCTION.
 2. LOCATION OF ALL SERVICES TO BE CONFIRMED IN THE FIELD.
 3. INSTALL WATERMAIN BY TRENCHLESS METHODS.
 4. TRENCHES AND EXCAVATIONS WITHIN 1 METRE OF A PAVED AREA INCLUDING SIDEWALKS SHALL BE CLASS 3 BACKFILL.
 5. ALL MATERIALS SHALL CONFORM TO THE CITY OF WINNIPEG STANDARD CONSTRUCTION SPECIFICATIONS.
 6. MINIMUM COVER TO TOP OF WATERMAIN SHALL BE 2.4 m.
 7. REPLACE ALL EXISTING LEAD SERVICES FROM PROPOSED WATERMAIN TO R.
 8. NOTIFY ALL AFFECTED RESIDENTS AND BUSINESSES 24 HOURS IN ADVANCE OF ANY WATER SHUTDOWNS OR DISRUPTION OF SERVICE.

METRIC
WHOLE NUMBERS INDICATE MILLIMETRES
DECIMALIZED NUMBERS INDICATE METRES

WARNING
IF POWER EQUIPMENT OR EXPLOSIVES ARE TO BE USED FOR EXCAVATION ON THIS PROJECT THE CONTRACTOR MUST:
1) NOTIFY THE GAS COMPANY OF THE PROPOSED LOCATION OF EXCAVATION.
2) TAKE PRECAUTION TO AVOID DAMAGE TO GAS COMPANY INSTALLATIONS.
SEE PROVINCIAL REGULATION 210/72 FOR DETAILS



200 WM	WATERMAIN	200 WM	SL, HYDRO	150 WM	WATERMAIN	150 WM
+	HYDRANT	+	MTS	+	HYDRANT	+
o	VALVE	o	TRAFFIC SIGNALS	+	VALVE	+
525 LDS	LAND DRAINAGE SEWER	525 LDS	GAS	300 LDS	LAND DRAINAGE SEWER	300 LDS
375 WWS	WASTEWATER SEWER	375 WWS	SURVEY BAR	250 WWS	WASTEWATER SEWER	250 WWS
o	MANHOLE	o	FENCE	x	PROFILE	
□	CATCH BASIN	■	POLE - HYDRO, MTS	=====	GROUND ABOVE PIPE	
▽	CURB INLET	▽	CURB STOP	▲	☉ DITCH (NORTH & WEST)	
∇	REDUCER	∇	GUY ANCHOR	☉	☉ DITCH (SOUTH & EAST)	
X	COUPLER	X	LIGHT STANDARD	□	GUTTER (NORTH & WEST)	
⊕	ANODE	⊕	TREE	○	GUTTER (SOUTH & EAST)	
EXISTING	LEGEND-PLAN	PROPOSED	EXISTING	LEGEND-PLAN	PROPOSED	EXISTING

LOCATION APPROVED		B.M. ELEV.	FIELD BOOK #
UNDERGROUND STRUCTURES			
SUPV. U/G STRUCTURES COMMITTEE	DATE		
NOTE: LOCATION OF UNDERGROUND STRUCTURES AS SHOWN ARE BASED ON THE BEST INFORMATION AVAILABLE BUT NO GUARANTEE IS GIVEN THAT ALL EXISTING UTILITIES ARE SHOWN OR THAT THE GIVEN LOCATIONS ARE EXACT. CONFIRMATION OF EXISTENCE AND EXACT LOCATION OF ALL SERVICES MUST BE OBTAINED FROM THE INDIVIDUAL UTILITIES BEFORE PROCEEDING WITH CONSTRUCTION.			
NO.	REVISIONS	DATE	BY

CITY OF WINNIPEG
WATER AND WASTE
ENGINEERING DIVISION

DESIGNED BY: MKG
CHECKED BY: SC
DRAWN BY: CJH
APPROVED BY: SC

HOR. SCALE: 1:250
VERTICAL: 1:50
DATE: 2010 06 02

ENGINEER'S SEAL
ORIGINAL MYLAR SIGNED BY
S.R.J. COURNOYER
02/06/10

THE CITY OF WINNIPEG
WATER AND WASTE DEPARTMENT

2010 WATERMAIN RENEWALS
CONTRACT 6
CORDOVA STREET
225 S OF KINGSWAY TO
100 S OF KINGSWAY

SHEET 3 OF 10
CITY DRAWING NUMBER
D-12036