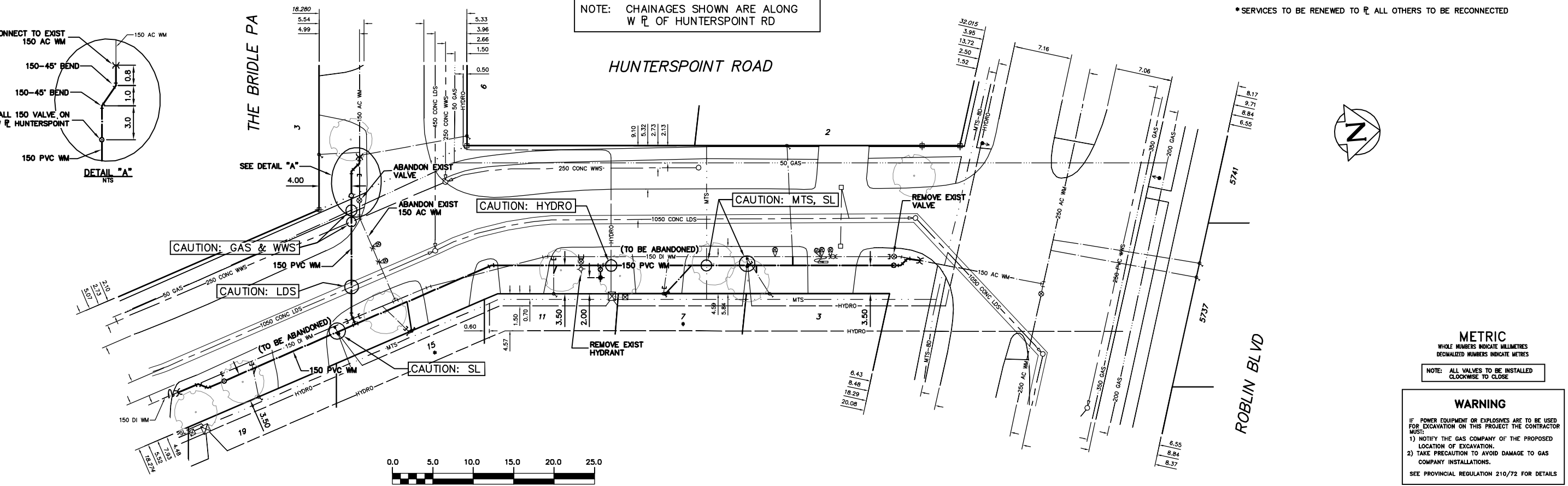


- CONSTRUCTION NOTES**
1. EXPOSE EXISTING WATERMAIN & CONFIRM INVERTS PRIOR TO CONSTRUCTION.
 2. LOCATION OF ALL SERVICES TO BE CONFIRMED IN THE FIELD.
 3. INSTALL WATERMAIN BY TRENCHLESS METHODS.
 4. TRENCHES AND EXCAVATIONS WITHIN 1 METRE OF A PAVED AREA INCLUDING SIDEWALKS SHALL BE CLASS 3 BACKFILL.
 5. ALL MATERIALS SHALL CONFORM TO THE CITY OF WINNIPEG STANDARD CONSTRUCTION SPECIFICATIONS.
 6. MINIMUM COVER TO TOP OF WATERMAIN SHALL BE 2.4 m.
 7. REPLACE ALL EXISTING LEAD SERVICES FROM PROPOSED WATERMAIN TO R.
 8. NOTIFY ALL AFFECTED RESIDENTS AND BUSINESSES 24 HOURS IN ADVANCE OF ANY WATER SHUTDOWNS OR DISRUPTION OF SERVICE.

- WATER SERVICE INFORMATION**
- | ADDRESS | SIZE(mm) & TYPE (STREET) | SIZE(mm) & TYPE (PROP) | SHORT & LONG MEASUREMENT | CORP. LOCATION | |
|--------------------|--------------------------|------------------------|--------------------------|----------------|------------------------|
| 2 HUNTERSPOINT RD | 20 COPPER | 20 COPPER | 3.03 NSL HSE | 0.7 N OF S/C | RECONNECT SERVICE |
| 3 HUNTERSPOINT RD | 20 COPPER | 20 COPPER | 21.38 SSL ROBLIN | 2.8 S OF S/C | RECONNECT SERVICE |
| 7 HUNTERSPOINT RD | 20 COPPER | 20 COPPER | 14.74 SSL ROBLIN | 0.7 N OF S/C | RENEW TO R W/20 COPPER |
| 11 HUNTERSPOINT RD | 20 COPPER | 20 COPPER | 27.93 SSL ROBLIN | OPP S/C | RECONNECT SERVICE |
| 15 HUNTERSPOINT RD | 20 COPPER | 20 COPPER | 10.44 NSL THE BRIDGE | 1.7 S OF S/C | RENEW TO R W/20 COPPER |
| 19 HUNTERSPOINT RD | 20 COPPER | 20 COPPER | 5.52 NSL HSE | 0.5 N OF S/C | RECONNECT SERVICE |
| 3 THE BRIDGE PA | 20 COPPER | 20 COPPER | 4.05 NSL HSE | 0.5 N OF S/C | RECONNECT SERVICE |
| 6 THE BRIDGE PA | 20 COPPER | 20 COPPER | 8.08 SSL THE BRIDGE | 0.2 W OF S/C | RECONNECT SERVICE |
| 5737 ROBLIN BLVD | 20 COPPER | 20 COPPER | 1.48 WEL HSE | 0.6 E OF S/C | RECONNECT SERVICE |
| 5741 ROBLIN BLVD | 20 COPPER | 20 COPPER | 6.85 WEL HUNTERSPOINT | 0.6 E OF S/C | RECONNECT SERVICE |
| | 20 COPPER | 20 COPPER | 1.13 WEL HUNTERSPOINT | 1.0 E OF S/C | RECONNECT SERVICE |
| | 20 COPPER | 20 COPPER | 10.09 WEL HUNTERSPOINT | 0.6 E OF S/C | RECONNECT SERVICE |
| | 20 COPPER | 20 COPPER | 13.98 WEL HSE | 1.0 E OF S/C | RECONNECT SERVICE |
| | 20 COPPER | 20 COPPER | 11.87 WEL HUNTERSPOINT | | RECONNECT SERVICE |
- *SERVICES TO BE RENEWED TO R ALL OTHERS TO BE RECONNECTED



NOTE: CHAINAGES SHOWN ARE ALONG W R OF HUNTERSPOINT RD



METRIC
WHOLE NUMBERS INDICATE MILLIMETRES
DECIMALIZED NUMBERS INDICATE METRES

NOTE: ALL VALVES TO BE INSTALLED
CLOCKWISE TO CLOSE

WARNING

IF POWER EQUIPMENT OR EXPLOSIVES ARE TO BE USED FOR EXCAVATION ON THIS PROJECT THE CONTRACTOR MUST:

- 1) NOTIFY THE GAS COMPANY OF THE PROPOSED LOCATION OF EXCAVATION.
- 2) TAKE PRECAUTION TO AVOID DAMAGE TO GAS COMPANY INSTALLATIONS.

SEE PROVINCIAL REGULATION 210/72 FOR DETAILS

200 WM	WATERMAIN	200 WM	SL, HYDRO	150 WM	WATERMAIN	150 WM
+	HYDRANT	+	MTS	+	HYDRANT	+
o	VALVE	o	TRAFFIC SIGNALS	+	VALVE	+
525 LDS	LAND DRAINAGE SEWER	525 LDS	GAS	300 LDS	LAND DRAINAGE SEWER	300 LDS
375 WWS	WASTEWATER SEWER	375 WWS	SURVEY BAR	250 WWS	WASTEWATER SEWER	250 WWS
o	MANHOLE	o	FENCE	o	PROFILE	o
□	CATCH BASIN	□	POLE - HYDRO, MTS	□	GROUND ABOVE PIPE	□
▽	CURB INLET	▽	CURB STOP	▽	☉ DITCH (NORTH & WEST)	▽
△	REDUCER	△	GUY ANCHOR	△	☉ DITCH (SOUTH & EAST)	△
X	COUPLER	X	LIGHT STANDARD	X	GUTTER (NORTH & WEST)	X
⊕	ANODE	⊕	TREE	⊕	GUTTER (SOUTH & EAST)	⊕
EXISTING	LEGEND-PLAN	PROPOSED	EXISTING	LEGEND-PLAN	PROPOSED	EXISTING
				LEGEND-PROFILE		PROPOSED

LOCATION APPROVED
UNDERGROUND STRUCTURES

SUPV. U/G STRUCTURES COMMITTEE DATE

NOTE:
LOCATION OF UNDERGROUND STRUCTURES AS SHOWN ARE BASED ON THE BEST INFORMATION AVAILABLE BUT NO GUARANTEE IS GIVEN THAT ALL EXISTING UTILITIES ARE SHOWN OR THAT THE GIVEN LOCATIONS ARE EXACT. CONFIRMATION OF EXISTENCE AND EXACT LOCATION OF ALL SERVICES MUST BE OBTAINED FROM THE INDIVIDUAL UTILITIES BEFORE PROCEEDING WITH CONSTRUCTION.

NO.	REVISIONS	DATE	BY

CITY OF WINNIPEG
WATER AND WASTE
ENGINEERING DIVISION

DESIGNED BY MKG CHECKED BY SC
DRAWN BY CJH APPROVED BY SC

HOR. SCALE 1:250
VERTICAL 1:50

RELEASED FOR CONSTRUCTION
DATE 2010 06 02

ENGINEER'S SEAL
ORIGINAL MYLAR
SIGNED BY
S.R.J. COURNOYER
02/06/10

THE CITY OF WINNIPEG
WATER AND WASTE DEPARTMENT

2010 WATERMAIN RENEWALS
CONTRACT 6
HUNTERSPOINT ROAD
THE BRIDLE PATH TO
ROBLIN BOULEVARD

SHEET 6 OF 10
CITY DRAWING NUMBER
D-12039