

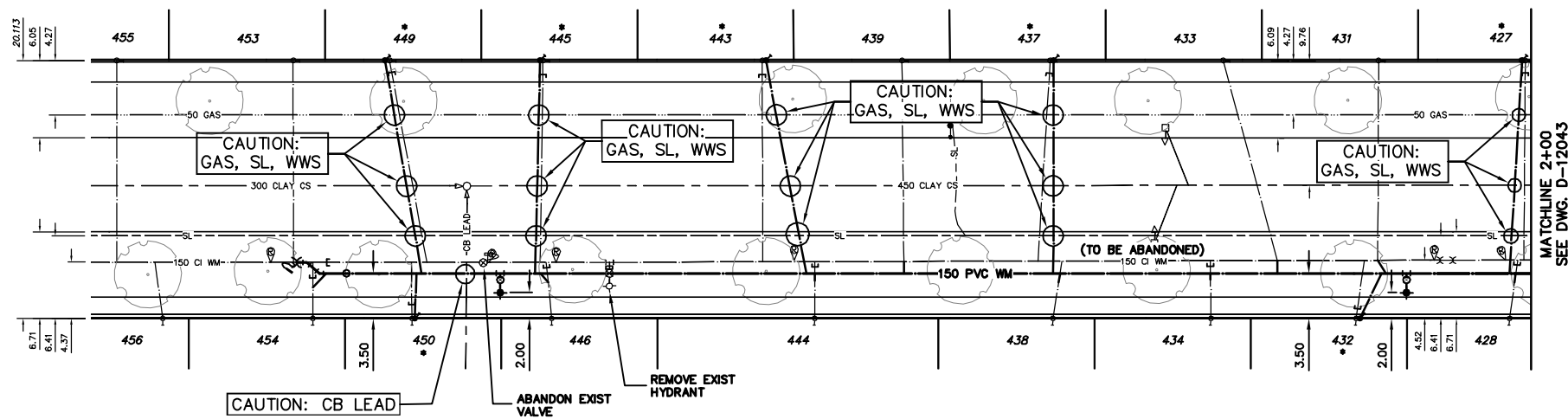
NOTE: CHAINAGES SHOWN ARE ALONG E ℄ OF QUEENSTON ST

QUEENSTON STREET

WATER SERVICE INFORMATION					
ADDRESS	SIZE(mm) & TYPE (STREET)	SIZE(mm) & TYPE (PROP)	SHORT & LONG MEASUREMENT	CORP. LOCATION	
427 QUEENSTON ST RESIDENTIAL	20	20	2.48 SNL HSE	OPP S/C	RENEW TO ℄ W/20 COPPER
428 QUEENSTON ST RESIDENTIAL	LEAD	LEAD	100.40 SSL GROSVENOR		
429 QUEENSTON ST RESIDENTIAL	20	20	2.90 SNL HSE	0.6 N OF S/C	RECONNECT SERVICE
430 QUEENSTON ST RESIDENTIAL	COPPER	COPPER	101.66 SSL GROSVENOR	OPP S/C	RECONNECT SERVICE
431 QUEENSTON ST RESIDENTIAL	20	20	2.23 SNL HSE		
432 QUEENSTON ST RESIDENTIAL	COPPER	COPPER	111.88 SSL GROSVENOR	OPP S/C	RECONNECT SERVICE
433 QUEENSTON ST RESIDENTIAL	20	20	1.88 SNL HSE	0.6 N OF S/C	RENEW TO ℄ W/20 COPPER
434 QUEENSTON ST RESIDENTIAL	COPPER	COPPER	113.16 SSL GROSVENOR		
435 QUEENSTON ST RESIDENTIAL	20	20	1.75 SNL HSE	4.2 N OF S/C	RECONNECT SERVICE
436 QUEENSTON ST RESIDENTIAL	COPPER	COPPER	123.95 SSL GROSVENOR		
437 QUEENSTON ST RESIDENTIAL	20	20	1.22 SNL HSE	OPP S/C	RECONNECT SERVICE
438 QUEENSTON ST RESIDENTIAL	COPPER	COPPER	124.87 SSL GROSVENOR	OPP S/C	RECONNECT SERVICE
439 QUEENSTON ST RESIDENTIAL	20	20	3.31 SNL HSE	0.9 S OF S/C	RENEW TO ℄ W/20 COPPER
440 QUEENSTON ST RESIDENTIAL	LEAD	COPPER	137.46 SSL GROSVENOR		
441 QUEENSTON ST RESIDENTIAL	20	20	1.77 SNL HSE	0.2 N OF S/C	RECONNECT SERVICE
442 QUEENSTON ST RESIDENTIAL	COPPER	COPPER	149.03 SSL GROSVENOR	0.7 N OF S/C	RECONNECT SERVICE
443 QUEENSTON ST RESIDENTIAL	20	20	1.43 SNL HSE	OPP S/C	RENEW TO ℄ W/20 COPPER
444 QUEENSTON ST RESIDENTIAL	LEAD	LEAD	159.89 SSL GROSVENOR		
445 QUEENSTON ST RESIDENTIAL	20	20	3.33 NSL HSE	OPP S/C	RECONNECT SERVICE
446 QUEENSTON ST RESIDENTIAL	COPPER	COPPER	165.93 SSL GROSVENOR		
447 QUEENSTON ST RESIDENTIAL	20	20	3.74 NSL HSE	0.3 S OF S/C	RENEW TO ℄ W/20 COPPER
448 QUEENSTON ST RESIDENTIAL	LEAD	LEAD	177.09 SSL GROSVENOR		
449 QUEENSTON ST RESIDENTIAL	20	20	2.86 NSL HSE	0.4 S OF S/C	RECONNECT SERVICE
450 QUEENSTON ST RESIDENTIAL	COPPER	COPPER	178.39 SSL GROSVENOR		
451 QUEENSTON ST RESIDENTIAL	20	20	3.61 NSL HSE	2.9 N OF S/C	RENEW TO ℄ W/20 COPPER
452 QUEENSTON ST RESIDENTIAL	LEAD	LEAD	186.96 SSL GROSVENOR		
453 QUEENSTON ST RESIDENTIAL	20	20	3.93 SNL HSE	OPP S/C	RENEW TO ℄ W/20 COPPER
454 QUEENSTON ST RESIDENTIAL	LEAD	LEAD	187.38 SSL GROSVENOR		
455 QUEENSTON ST RESIDENTIAL	20	20	1.35 SNL HSE	OPP S/C	
456 QUEENSTON ST RESIDENTIAL	COPPER	COPPER	196.80 SSL GROSVENOR	OPP S/C	
457 QUEENSTON ST RESIDENTIAL	20	20	0.73 SNL HSE	OPP S/C	RECONNECT SERVICE
458 QUEENSTON ST RESIDENTIAL	COPPER	COPPER	195.08 SSL GROSVENOR		

\*SERVICES TO BE RENEWED TO ℄ ALL OTHERS TO BE RECONNECTED

- CONSTRUCTION NOTES**
1. EXPOSE EXISTING WATERMAIN & CONFIRM INVERTS PRIOR TO CONSTRUCTION.
  2. LOCATION OF ALL SERVICES TO BE CONFIRMED IN THE FIELD.
  3. INSTALL WATERMAIN BY TRENCHLESS METHODS.
  4. TRENCHES AND EXCAVATIONS WITHIN 1 METRE OF A PAVED AREA INCLUDING SIDEWALKS SHALL BE CLASS 3 BACKFILL.
  5. ALL MATERIALS SHALL CONFORM TO THE CITY OF WINNIPEG STANDARD CONSTRUCTION SPECIFICATIONS.
  6. MINIMUM COVER TO TOP OF WATERMAIN SHALL BE 2.4 m.
  7. REPLACE ALL EXISTING LEAD SERVICES FROM PROPOSED WATERMAIN TO ℄.
  8. NOTIFY ALL AFFECTED RESIDENTS AND BUSINESSES 24 HOURS IN ADVANCE OF ANY WATER SHUTDOWNS OR DISRUPTION OF SERVICE.



**METRIC**  
WHOLE NUMBERS INDICATE MILLIMETRES  
DECIMALIZED NUMBERS INDICATE METRES

NOTE: ALL VALVES TO BE INSTALLED COUNTERCLOCKWISE TO CLOSE

**WARNING**

IF POWER EQUIPMENT OR EXPLOSIVES ARE TO BE USED FOR EXCAVATION ON THIS PROJECT THE CONTRACTOR MUST:

- 1) NOTIFY THE GAS COMPANY OF THE PROPOSED LOCATION OF EXCAVATION.
- 2) TAKE PRECAUTION TO AVOID DAMAGE TO GAS COMPANY INSTALLATIONS.

SEE PROVINCIAL REGULATION 210/72 FOR DETAILS

0.0 5.0 10.0 15.0 20.0 25.0

200 WM	WATERMAIN	200 WM	SL, HYDRO	150 WM	WATERMAIN	150 WM
⊕	HYDRANT	⊕	MTS	⊕	HYDRANT	⊕
⊙	VALVE	⊙	TRAFFIC SIGNALS	⊕	VALVE	⊕
525 LDS	LAND DRAINAGE SEWER	525 LDS	GAS	50 GAS	300 LDS	LAND DRAINAGE SEWER
375 WWS	WASTEWATER SEWER	375 WWS	SURVEY BAR	250 WWS	250 WWS	WASTEWATER SEWER
○	MANHOLE	●	FENCE	⊕	℄	PROFILE
□	CATCH BASIN	■	POLE - HYDRO, MTS	⊕	⊕	GROUND ABOVE PIPE
▽	CURB INLET	▽	CURB STOP	⊕	⊕	℄ DITCH (NORTH & WEST)
∇	REDUCER	∇	GUY ANCHOR	⊕	⊕	℄ DITCH (SOUTH & EAST)
X	COUPLER	X	LIGHT STANDARD	⊕	⊕	GUTTER (NORTH & WEST)
⊕	ANODE	⊕	TREE	⊕	⊕	GUTTER (SOUTH & EAST)
EXISTING	LEGEND-PLAN	PROPOSED	EXISTING	LEGEND-PLAN	PROPOSED	EXISTING
				LEGEND-PROFILE		PROPOSED

LOCATION APPROVED UNDERGROUND STRUCTURES

SUPPLY U/G STRUCTURES COMMITTEE DATE

NOTE: LOCATION OF UNDERGROUND STRUCTURES AS SHOWN ARE BASED ON THE BEST INFORMATION AVAILABLE BUT NO GUARANTEE IS GIVEN THAT ALL EXISTING UTILITIES ARE SHOWN OR THAT THE GIVEN LOCATIONS ARE EXACT. CONFIRMATION OF EXISTENCE AND EXACT LOCATION OF ALL SERVICES MUST BE OBTAINED FROM THE INDIVIDUAL UTILITIES BEFORE PROCEEDING WITH CONSTRUCTION.

B.M. ELEV.	FIELD BOOK #		
POSTED TO LBS			
NO.	REVISIONS	DATE	BY

**CITY OF WINNIPEG**  
WATER AND WASTE  
ENGINEERING DIVISION

DESIGNED BY MKG CHECKED BY SC

DRAWN BY CJH APPROVED BY SC

HOR. SCALE 1:250  
VERTICAL 1:50

RELEASED FOR CONSTRUCTION

DATE 2010 06 02 DATE

ENGINEER'S SEAL

ORIGINAL MYLAR SIGNED BY S.R.J. COURNOYER 02/06/10

BID OPPORTUNITY 397-2010  
FILENAME : D-12042.dwg  
PLOT DATE: 2010 08 02

**THE CITY OF WINNIPEG**  
WATER AND WASTE DEPARTMENT

2010 WATERMAIN RENEWALS CONTRACT 6  
QUEENSTON STREET  
200 S OF GROSVENOR AVENUE TO  
100 S OF GROSVENOR AVENUE

SHEET 9 OF 10  
CITY DRAWING NUMBER  
D-12042