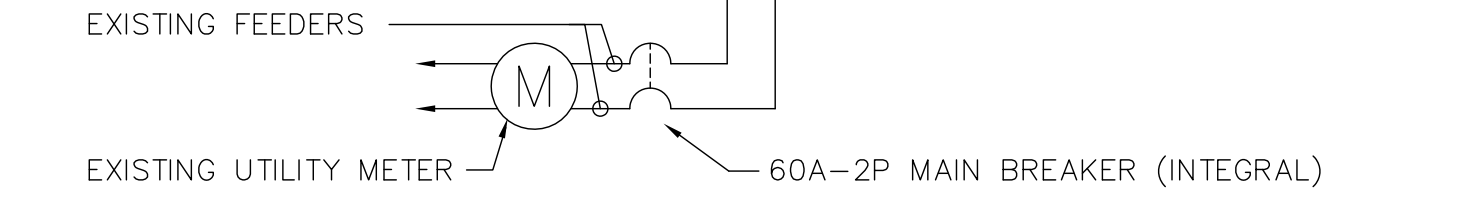


PANEL 'A'
 MOUNTING: EXISTING POLE
 VOLTS: 120/240V/1Ø/3W
 MAIN BUS: 100A
 REMARKS: C/W GROUNDING AS PER CEC

DESCRIPTION	BKR	CIRCUIT	BKR	DESCRIPTION
EXISTING RECEPTACLE	15 1	2	15	EXISTING RECEPTACLE
EXISTING RECEPTACLE	15 3	4	15	EXISTING RECEPTACLE
EXISTING RECEPTACLE	15 5	6	15	EXISTING RECEPTACLE
EXISTING RECEPTACLE	15 7	8	15	EXISTING RECEPTACLE
EXISTING RECEPTACLE	15 9	10	15	EXISTING RECEPTACLE
EXISTING RECEPTACLE	15 11	12	15	EXISTING RECEPTACLE
ARCHWAY RECEPTACLE	15 13	14	15	ARCHWAY RECEPTACLE
NEW POLE MTD. RECEPTACLE	15 15	16	15	NEW POLE MTD. RECEPTACLE
NEW POLE MTD. RECEPTACLE	15 17	18	15	NEW POLE MTD. RECEPTACLE
NEW POLE MTD. RECEPTACLE	15 19	20	15	NEW POLE MTD. RECEPTACLE
NEW POLE MTD. RECEPTACLE	15 21	22	15	NEW POLE MTD. RECEPTACLE
NEW POLE MTD. RECEPTACLE	15 23	24	15	NEW POLE MTD. RECEPTACLE
NEW POLE MTD. RECEPTACLE	15 25	26	15	NEW POLE MTD. RECEPTACLE
NEW POLE MTD. RECEPTACLE	15 27	28	15	NEW POLE MTD. RECEPTACLE
NEW POLE MTD. RECEPTACLE	15 29	30	15	NEW POLE MTD. RECEPTACLE
NEW POLE MTD. RECEPTACLE	15 31	32	15	NEW POLE MTD. RECEPTACLE
NEW POLE MTD. RECEPTACLE	15 33	34	15	NEW POLE MTD. RECEPTACLE
NORTH SIDE LIGHTING	15 35	36	15	NORTH SIDE LIGHTING
SOUTH SIDE LIGHTING	15 37	38	15	SOUTH SIDE LIGHTING
SPARE	- 39	40	-	SPARE
SPARE	- 41	42	-	SPARE



PANEL 'A'
 NOTE: PANEL TO BE W.P., LOCKABLE, MANCO OR APPROVED EQUAL

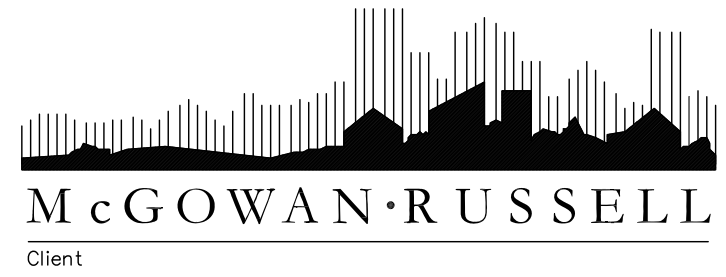
SPECIFIC ELECTRICAL NOTES

- WIRE AND CONNECT LED TRANSFORMER WITHIN COLUMN. COORDINATE ACCESS PANEL LOCATION.
- INSTALL CONDUIT FROM PANEL A TO LIGHT POLES AND ARCHWAY PILLAR. MINIMUM 1M BELOW GRADE. REPAIR SURFACE TO ORIGINAL CONDITION.
- PROVIDE NEW PANEL A TO REPLACE EXISTING PANEL. RECONNECT ALL EXISTING CIRCUITS.
- PROVIDE A 3/4" PVC CONDUIT SLEEVE FOR ALL WIRING BELOW ARCH PILLAR.
- PROVIDE PHOTOCELL CONTROL OF CIRCUITS A35-38

SYMBOL SCHEDULE

- WP GF WEATHER-PROOF GROUND FAULT DUPLEX RECEPTACLE.
- NEW RIGID PVC CONDUIT
- RIGID PVC CONDUIT INSTALLED BY PUBLIC WORKS (NOT IN CONTRACT)

No.	Revisions	Date	By
Date	Scale		
05-26-10	1:400		
Designed By	Drawn By	Checked By	
DZ	AH	DZ	



TRANSCONA BIZ
 Project Title
DOWNTOWN TRANSCONA REVITALIZATION

NOVA 3 ENGINEERING LTD.
 CONSULTING ENGINEERS
 201-120 FORT STREET TEL.: (204) 943-6142
 WINNIPEG, MANITOBA FAX.: (204) 942-1276
 R3C 1C7

THIS DRAWING IS THE EXCLUSIVE PROPERTY OF NOVA 3 ENGINEERING LTD. AND MAY ONLY BE REPRODUCED WITH THE WRITTEN PERMISSION OF NOVA 3 ENGINEERING LTD.
 THE CONCEPT AND DESIGN INCORPORATED INTO THIS DRAWING ARE BASED ON INFORMATION PROVIDED BY THE CLIENT AND OTHER RELATED SOURCES. PROFESSIONAL ENGINEER ACCEPTS NO RESPONSIBILITY FOR DRAWING AND DESIGN UNLESS DRAWING IS ACCOMPANIED BY ORIGINAL SEALED AND SIGNED LETTER OF INTENT AND CERTIFICATE OF INSPECTION.

Sheet Title
ELECTRICAL PLAN
 2 of 3
 Project No. 09-050 Drawing No. E1.2