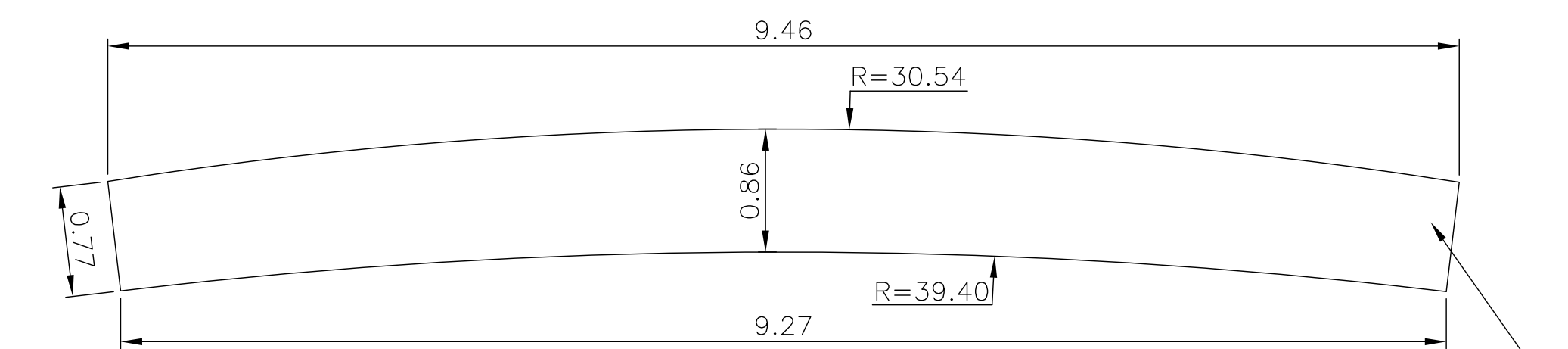


STEEL ARCHWAY ROOF. GALVANIZED, PRIMED, AND POWDERCOATED. COLOR TO BE APPROVED BY LANDSCAPE ARCHITECT. REFER TO STRUCTURAL DRAWINGS.

STEEL ARCHWAY. GALVANIZED, PRIMED, AND POWDERCOATED. COLOR TO BE APPROVED BY LANDSCAPE ARCHITECT. REFER TO STRUCTURAL DRAWINGS.

STEEL U CHANNEL. GALVANIZED, PRIMED, AND POWDERCOATED. COLOR TO BE APPROVED BY LANDSCAPE ARCHITECT.

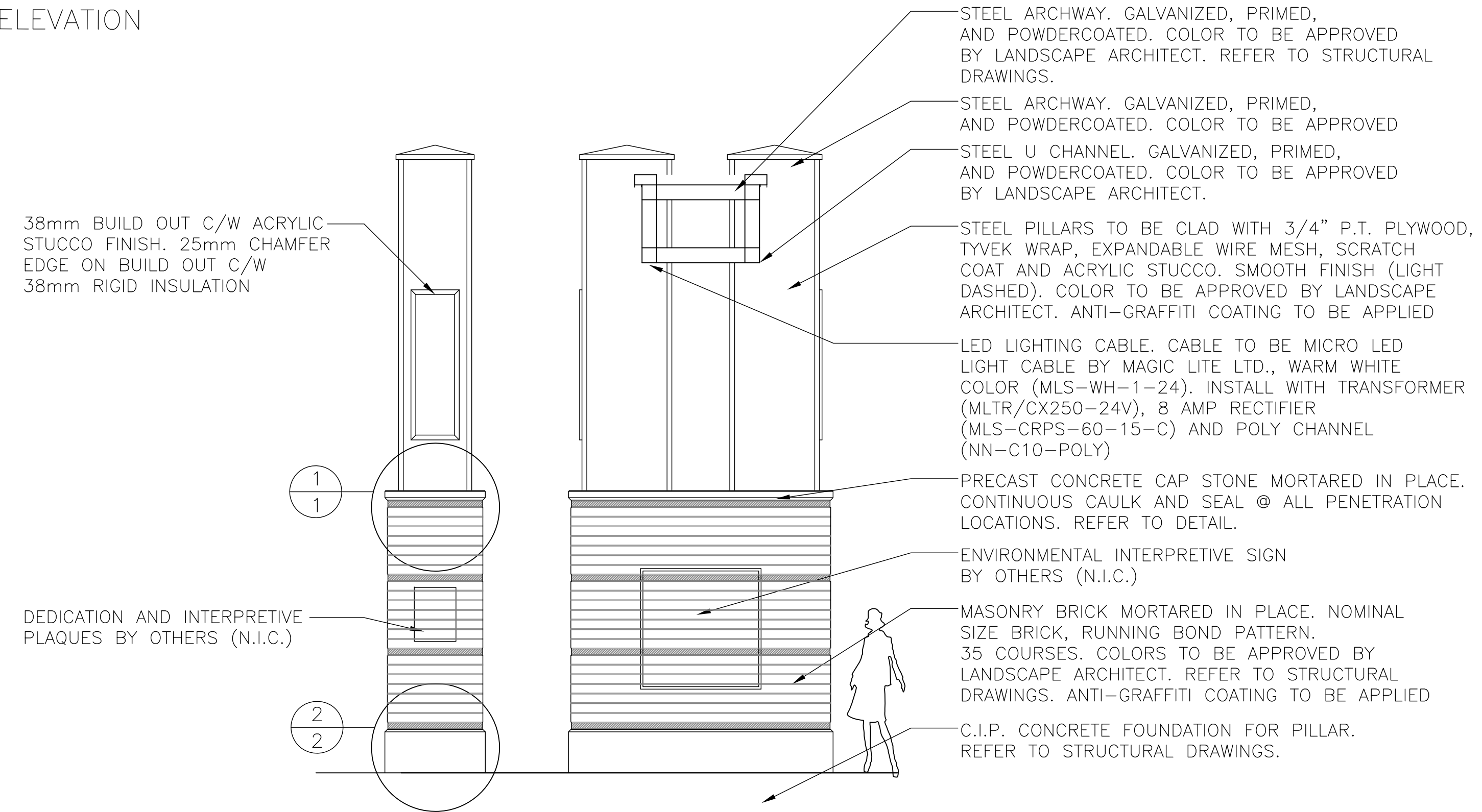


NOTE: CONTRACTOR TO PROVIDE FULL COLOUR PROOFS OF EACH SIGN FOR REVIEW AND APPROVAL BY CITY OF WINNIPEG AND CONTRACT ADMINISTRATOR.

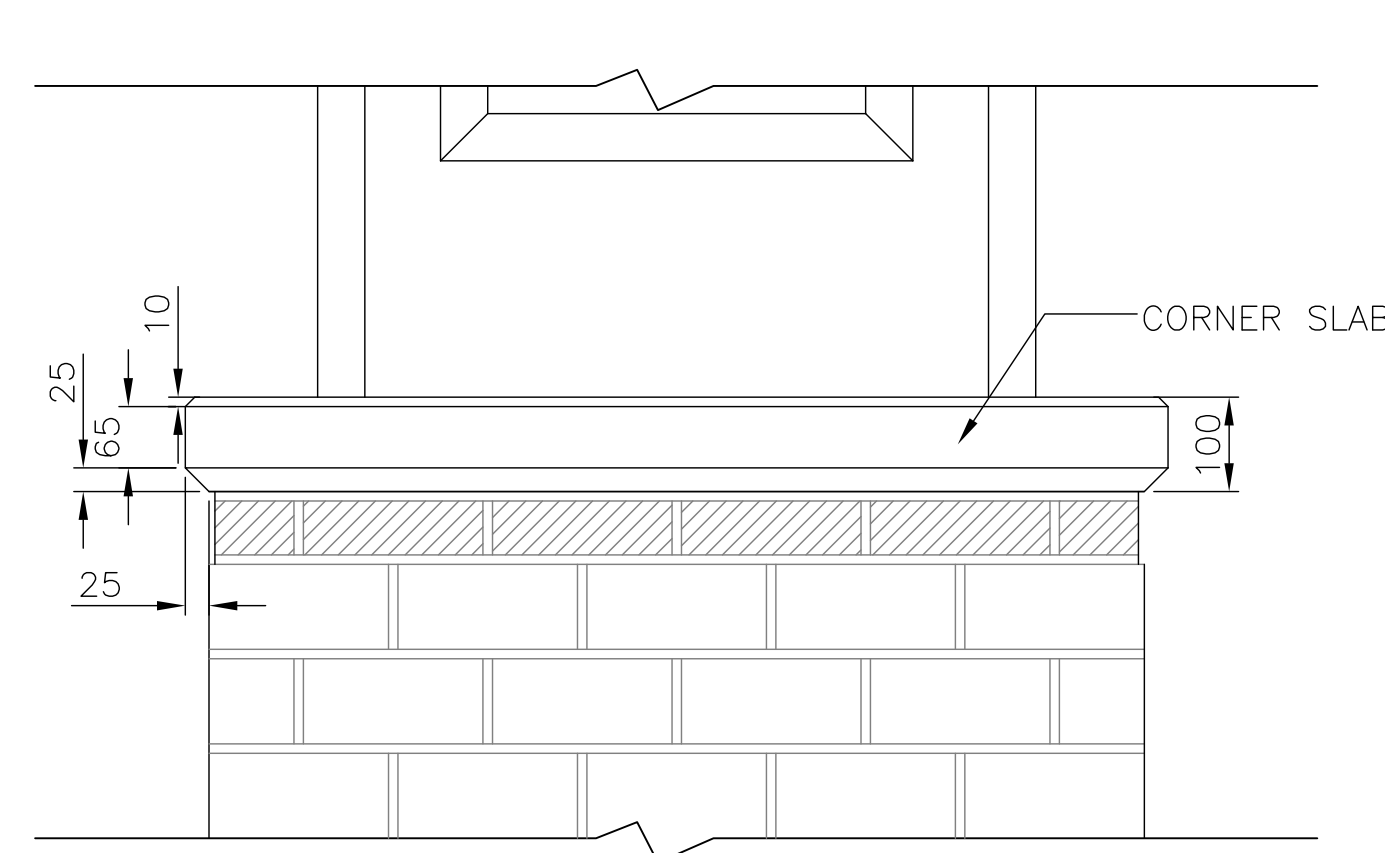
SINGLE SIDED ALUMINIUM SIGN ARTWORK TO BE SUPPLIED BY CONTRACT ADMINISTRATOR IN DIGITAL FORMAT. SIGN TO BE 5052 H38 ALUMINIUM (3MM) PRINTED ON ONE SIDE (4 COLOUR).

ALUMINIUM SIGN
N.T.S.

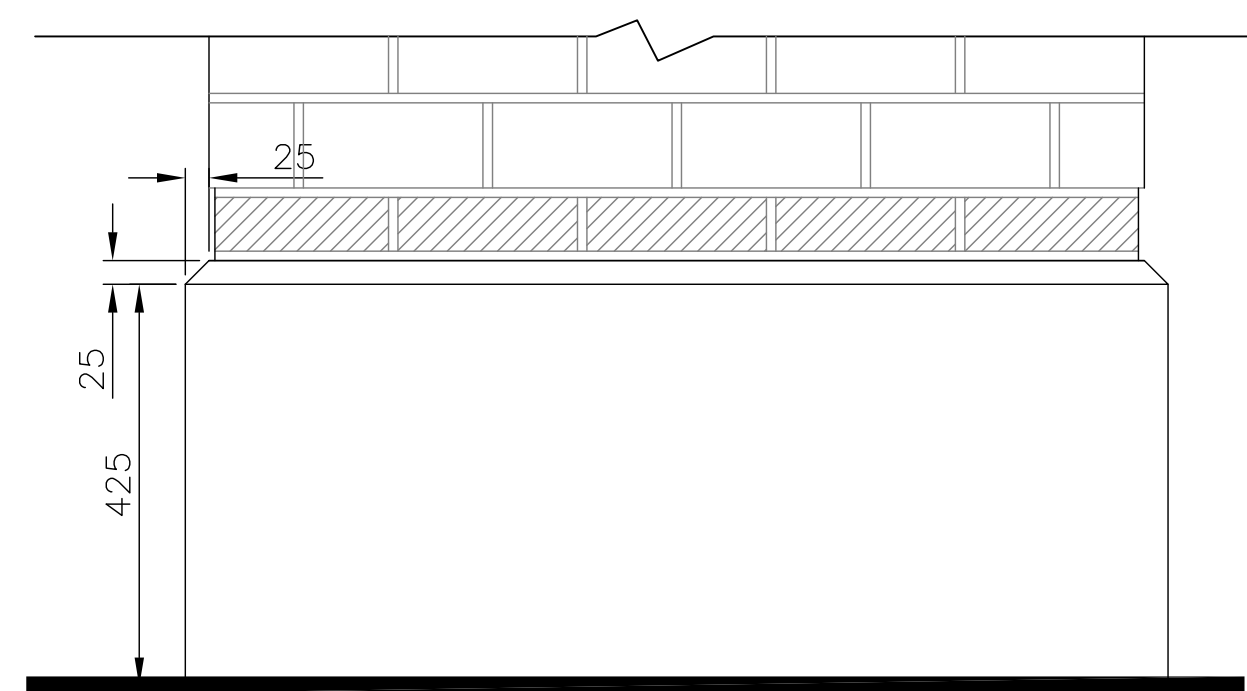
WEST ELEVATION



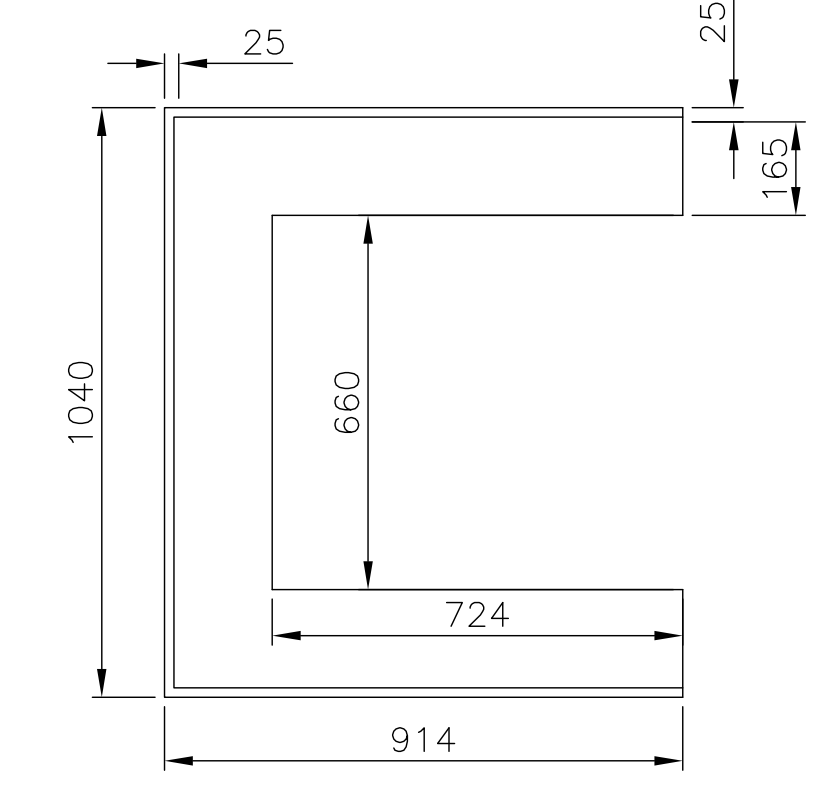
ARCH COLUMN DETAIL
N.T.S.



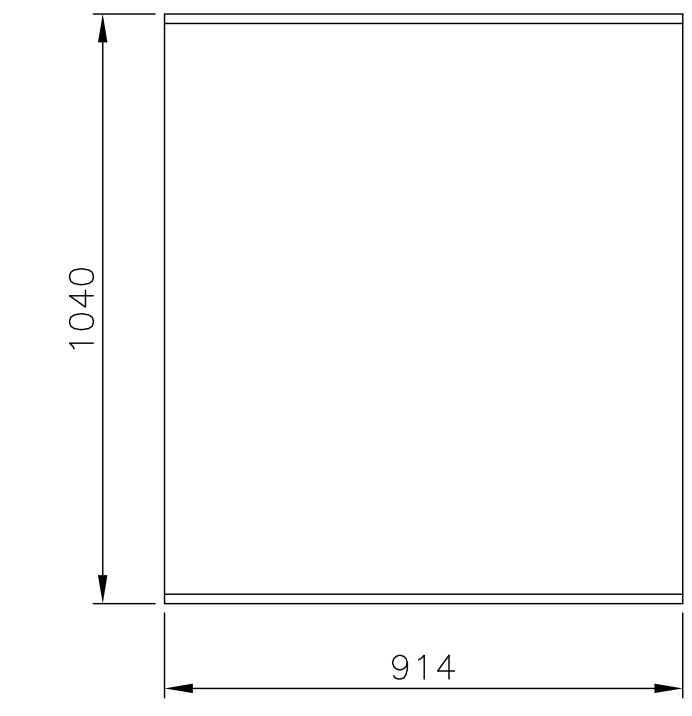
1 PRECAST CONCRETE CAP STONE
N.T.S.



2 LARGE SCALE DETAIL
N.T.S.

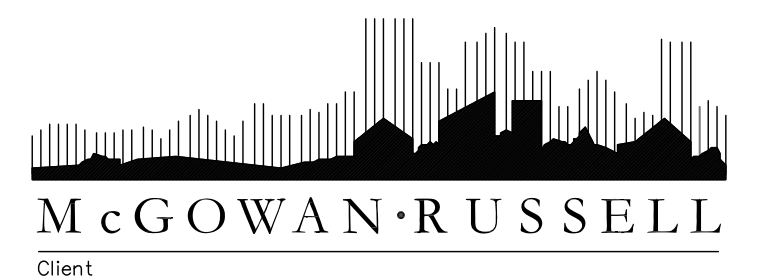


CORNER SLAB PLAN VIEW



CENTER SLAB PLAN VIEW

No.	Revisions	Date	By
04-27-10	Scale	1:400	
SR/AH	Designed By	AH	Checked By
			SR



Client
TRANSCONA BIZ
Project Title
**DOWNTOWN
TRANSCONA
REVITALIZATION**

Sheet Title
**ARCHWAY
DETAILS**

NOTE: CONTRACTOR SHALL SUBMIT SHOP DRAWINGS, STAMPED AND SIGNED BY STRUCTURAL ENGINEER LICENSED TO PRACTICE IN THE PROVINCE OF MANITOBA TO CONTRACT ADMINISTRATOR FOR APPROVAL PRIOR TO FABRICATION FOR ALL METAL WORK.