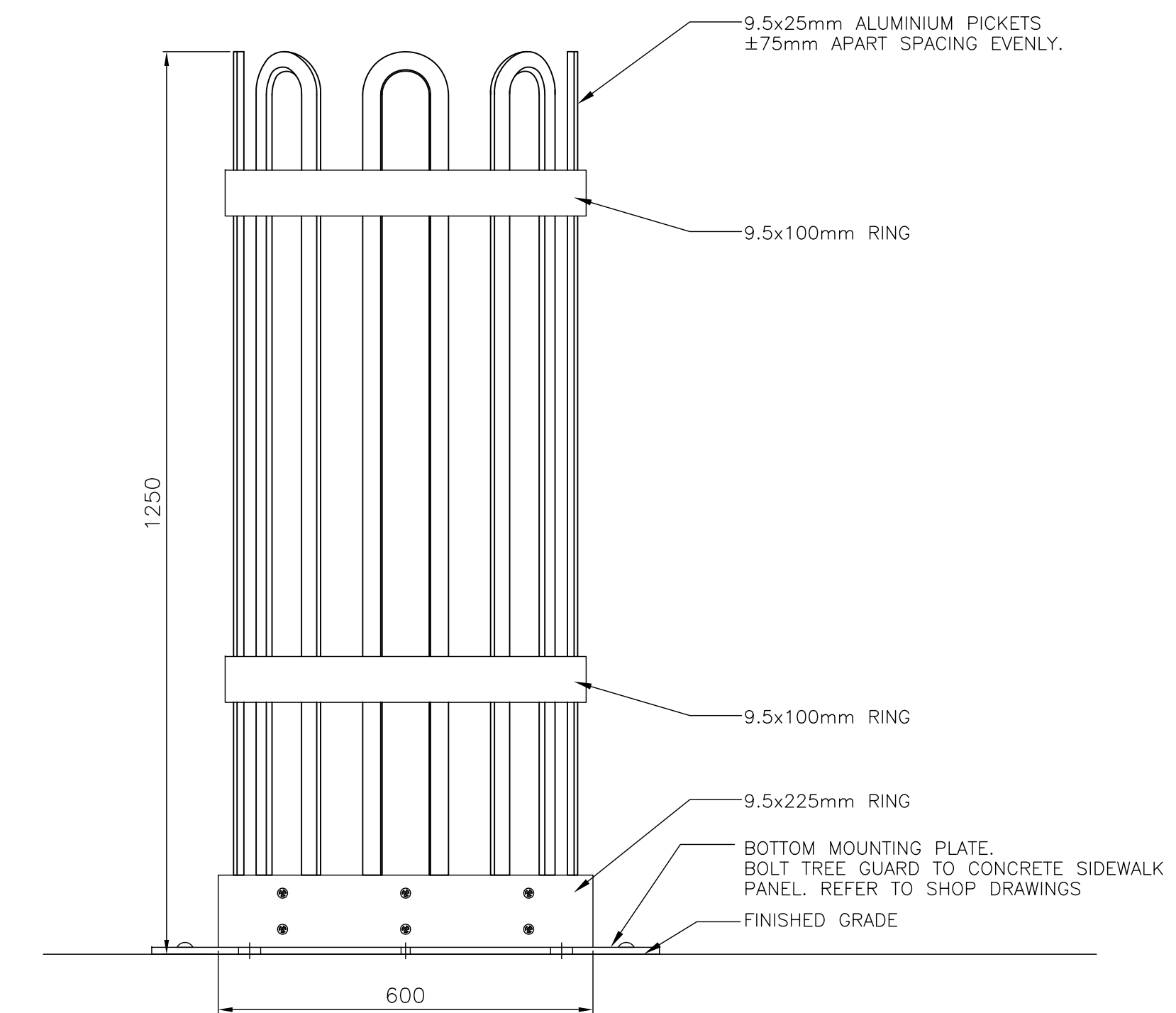
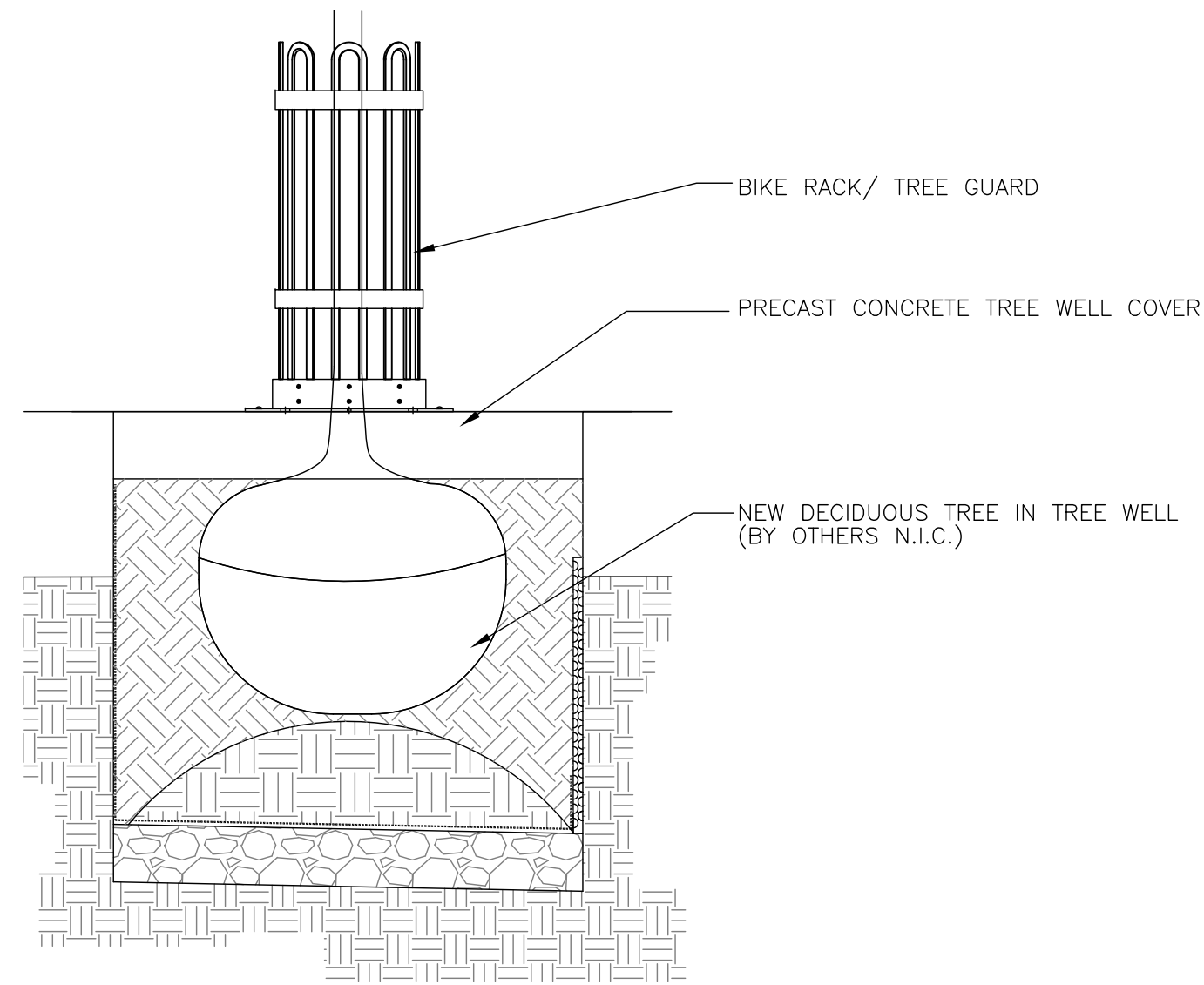
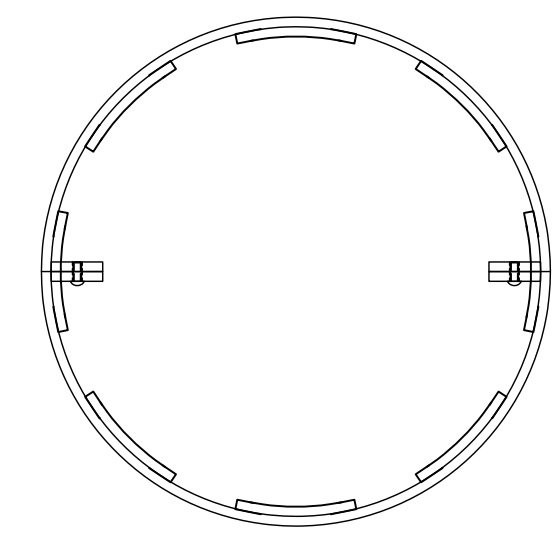


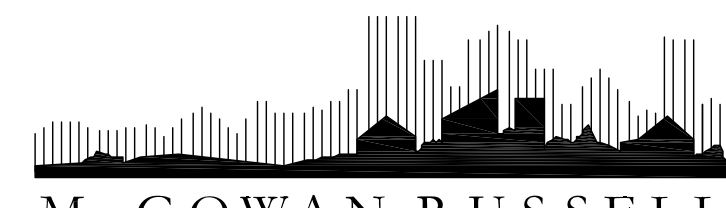
NOTES:
 - ALL WOOD TO BE PRESSURE TREATED CEDAR TONE WITH ANTI-GRAFFITI COATING
 - ALL METAL HARDWARE TO BE GALVANIZED STEEL. BOLTS TO BE 3/4" ASSEMBLE TO PLATES WITH WASHERS AND NUT. (2 PER PLATE)

1 **1.2m HIGH ORNAMENTAL WOOD FENCE**
 L1 N.T.S.



2 **1.2m HIGH TREE GUARD**
 L1 N.T.S.

| No. | Revisions | Date | By |
|-------------|-----------|------------|----|
| 04-27-10 | NTS | | |
| Designed By | Drawn By | Checked By | |
| SR/AH | AH | SR | |



Client
 TRANSCONA BIZ
 Project Title
**DOWNTOWN
 TRANSCONA
 REVITALIZATION**
 Sheet Title
DETAILS

Project No. 09-050 Drawing No. L3