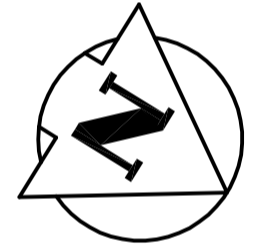
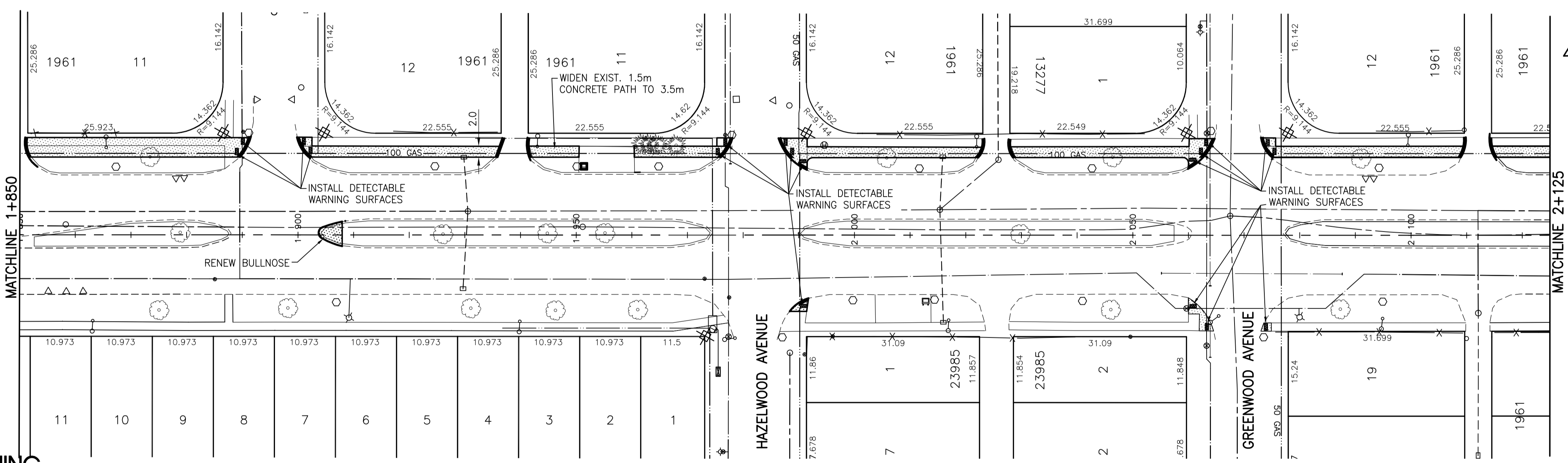


DAKOTA STREET



**WARNING**

IF POWER EQUIPMENT OR EXPLOSIVES ARE TO BE USED FOR EXCAVATION ON THIS PROJECT THE CONTRACTOR MUST:  
 1) NOTIFY THE GAS COMPANY OF THE PROPOSED LOCATION OF EXCAVATION.  
 2) TAKE PRECAUTION TO AVOID DAMAGE TO GAS COMPANY INSTALLATIONS.  
 SEE PROVINCIAL REGULATION 140/92 FOR DETAILS

**METRIC**

WHOLE NUMBERS INDICATE MILLIMETRES  
 DECIMALIZED NUMBERS INDICATE METRES

EXISTING	LEGEND-PLAN	PROPOSED	EXISTING	LEGEND-PLAN	PROPOSED	EXISTING	LEGEND-PROFILE	PROPOSED
150 WM	WATERMAIN	150 WM	HYDRO	HYDRO	150 WM	WATERMAIN	150 WM	WATERMAIN
300 LDS	LAND DRAINAGE SEWER	300 LDS	M.T.S.	M.T.S.	300 LDS	HYDRANT, VALVE	300 LDS	HYDRANT, VALVE
250 WWS	WASTE WATER SEWER	250 WWS	CONCRETE	CONCRETE	250 WWS	LAND DRAINAGE SEWER	250 WWS	LAND DRAINAGE SEWER
MANHOLE	MANHOLE	MANHOLE	SIDEWALK - ASPHALT	SIDEWALK - ASPHALT	MANHOLE	WASTE WATER SEWER	MANHOLE	WASTE WATER SEWER
CATCH BASIN	CATCH BASIN	CATCH BASIN	SIDEWALK - CONCRETE	SIDEWALK - CONCRETE	CATCH BASIN	PROPERTY LINE	CATCH BASIN	PROPERTY LINE
CURB INLET	CURB INLET	CURB INLET	SIDEWALK - REMOVAL	SIDEWALK - REMOVAL	CURB INLET	SURVEY BAR	CURB INLET	SURVEY BAR
JUNCTIONS	JUNCTIONS	JUNCTIONS	ELEVATION	ELEVATION	JUNCTIONS	DITCH	JUNCTIONS	DITCH
CULVERT	CULVERT	CULVERT	SIDEWALK RAMP	SIDEWALK RAMP	CULVERT	CONCRETE	CULVERT	CONCRETE
GAS	GAS	GAS			GAS		GAS	

LOCATION APPROVED UNDERGROUND STRUCTURES		B.M. ELEV.
SUPV. U/G STRUCTURES COMMITTEE	DATE	
NOTE:		
LOCATION OF UNDERGROUND STRUCTURES AS SHOWN ARE BASED ON THE BEST INFORMATION AVAILABLE BUT NO GUARANTEE IS GIVEN THAT THE GIVEN LOCATIONS ARE EXACT. CONFIRMATION OF EXISTENCE AND EXACT LOCATION OF ALL SERVICES MUST BE OBTAINED FROM THE INDIVIDUAL UTILITIES BEFORE PROCEEDING WITH CONSTRUCTION.		
NO.	REVISIONS	DATE BY

**Stantec Consulting Ltd.**  
 905 Waverley Street, Winnipeg, Manitoba  
 Tel 204-489-5900 Fax 204-453-9012

DESIGNED BY: S.R.S. CHECKED BY: V.M.M.  
 DRAWN BY: T.G. APPROVED BY: S.R.S.

HOR. SCALE: 1:500  
 VERTICAL: 1:20

RELEASED FOR CONSTRUCTION: \_\_\_\_\_  
 DATE: 10.04.22

ENGINEER'S SEAL  
 PROVINCE OF MANITOBA  
 S.R. SUDERMAN  
 MEMBER 23997  
 REGISTERED PROFESSIONAL ENGINEER

CONSULTANT DRAWING NO. C-216

**THE CITY OF WINNIPEG**  
 PUBLIC WORKS DEPARTMENT  
 ENGINEERING DIVISION

**DAKOTA/DUNKIRK PATHWAY-PHASE I**  
 WARDE AVENUE TO BISHOP GRANDIN BOULEVARD  
 STA. 1+850 TO STA. 2+125

2010 ACTIVE TRANSPORTATION INFRASTRUCTURE STIMULUS PROGRAM

SHEET 8 OF 12  
 CAD FILE DRAWING NUMBER 05260c-210-xxx.dwg  
 CITY DRAWING NUMBER W-376-08