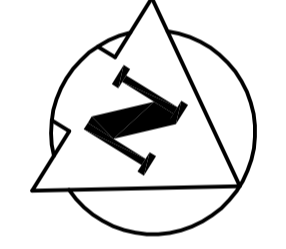
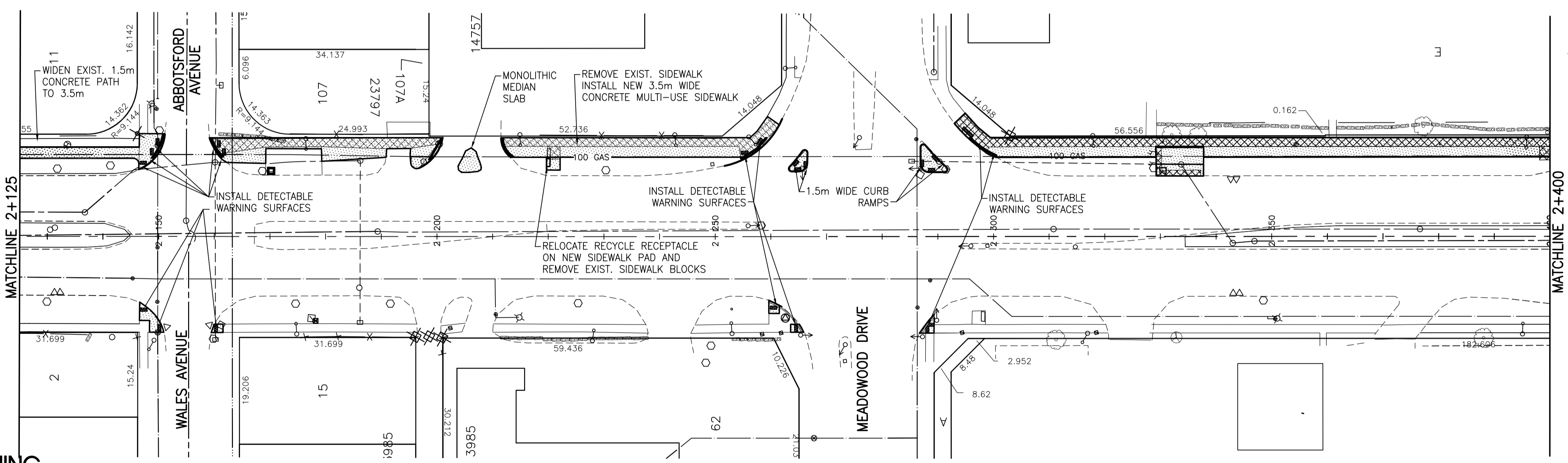


DAKOTA STREET



**WARNING**

IF POWER EQUIPMENT OR EXPLOSIVES ARE TO BE USED FOR EXCAVATION ON THIS PROJECT THE CONTRACTOR MUST:  
 1) NOTIFY THE GAS COMPANY OF THE PROPOSED LOCATION OF EXCAVATION.  
 2) TAKE PRECAUTION TO AVOID DAMAGE TO GAS COMPANY INSTALLATIONS.  
 SEE PROVINCIAL REGULATION 140/92 FOR DETAILS

**METRIC**

WHOLE NUMBERS INDICATE MILLIMETRES  
 DECIMALIZED NUMBERS INDICATE METRES

EXISTING	LEGEND-PLAN	PROPOSED	EXISTING	LEGEND-PLAN	PROPOSED	EXISTING	LEGEND-PROFILE	PROPOSED
150 WM	WATERMAIN	150 WM	HYDRO	150 WM	WATERMAIN	300 LDS	WATERMAIN	300 LDS
300 LDS	LAND DRAINAGE SEWER	300 LDS	M.T.S.	300 LDS	HYDRANT, VALVE	250 WWS	HYDRANT, VALVE	300 LDS
250 WWS	WASTE WATER SEWER	250 WWS	CONCRETE	250 WWS	LAND DRAINAGE SEWER	300 LDS	LAND DRAINAGE SEWER	300 LDS
○	MANHOLE	●	SIDEWALK - ASPHALT	○	WASTE WATER SEWER	○	WASTE WATER SEWER	○
□	CATCH BASIN	■	SIDEWALK - CONCRETE	○	○ PROFILE	○	○ PROFILE	○
▽	CURB INLET	⊕	SIDEWALK - REMOVAL	○	NORTH OR WEST GUTTER	○	NORTH OR WEST GUTTER	○
+	JUNCTIONS	+	PROPERTY LINE	○	SOUTH OR EAST GUTTER	○	SOUTH OR EAST GUTTER	○
▬	CULVERT	▬	SURVEY BAR	○	NORTH OR WEST DITCH	○	NORTH OR WEST DITCH	○
▬	GAS	▬	DITCH	○	SOUTH OR EAST DITCH	○	SOUTH OR EAST DITCH	○
▬	LEGEND-PLAN	▬	ELEVATION	○	SIDEWALK RAMP	○	SIDEWALK RAMP	○
▬	PROPOSED	▬	(32.231)	○	LEGEND-PLAN	▬	LEGEND-PROFILE	▬
▬	EXISTING	▬	SIDEWALK RAMP	○	PROPOSED	▬	PROPOSED	▬

**LOCATION APPROVED UNDERGROUND STRUCTURES**

NOTE:  
 LOCATION OF UNDERGROUND STRUCTURES AS SHOWN ARE BASED ON THE BEST INFORMATION AVAILABLE BUT NO GUARANTEE IS GIVEN THAT THE GIVEN LOCATIONS ARE EXACT. CONFIRMATION OF EXISTENCE AND EXACT LOCATION OF ALL SERVICES MUST BE OBTAINED FROM THE INDIVIDUAL UTILITIES BEFORE PROCEEDING WITH CONSTRUCTION.

NO.	REVISIONS	DATE	BY
1	ISSUED FOR TENDER	10.06.02	S.R.S.
0	ISSUED FOR REVIEW	10.05.28	S.R.S.

**Stantec Consulting Ltd.**  
 905 Waverley Street, Winnipeg, Manitoba  
 Tel 204-489-5900 Fax 204-453-9012

DESIGNED BY: S.R.S. CHECKED BY: V.M.M.  
 DRAWN BY: T.G. APPROVED BY: S.R.S.

HOR. SCALE: 1:500  
 VERTICAL: 1:20

RELEASSED FOR CONSTRUCTION: \_\_\_\_\_  
 DATE: \_\_\_\_\_

DATE: 10.04.22

ENGINEER'S SEAL  
 PROVINCE OF MANITOBA  
 S.R. SUDERMAN  
 MEMBER 23997  
 REGISTERED PROFESSIONAL ENGINEER

CONSULTANT DRAWING NO.  
 C-217

**THE CITY OF WINNIPEG**  
 PUBLIC WORKS DEPARTMENT  
 ENGINEERING DIVISION

**DAKOTA/DUNKIRK PATHWAY-PHASE I**  
 WARDE AVENUE TO BISHOP GRANDIN BOULEVARD  
 STA. 2+125 TO STA. 2+400

2010 ACTIVE TRANSPORTATION  
 INFRASTRUCTURE STIMULUS PROGRAM

SHEET 9 OF 12  
 CAD FILE DRAWING NUMBER 05260c-210-xxx.dwg  
 CITY DRAWING NUMBER W-376-09