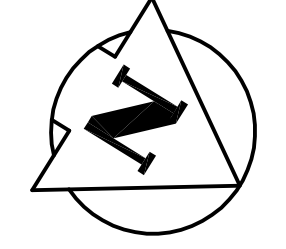
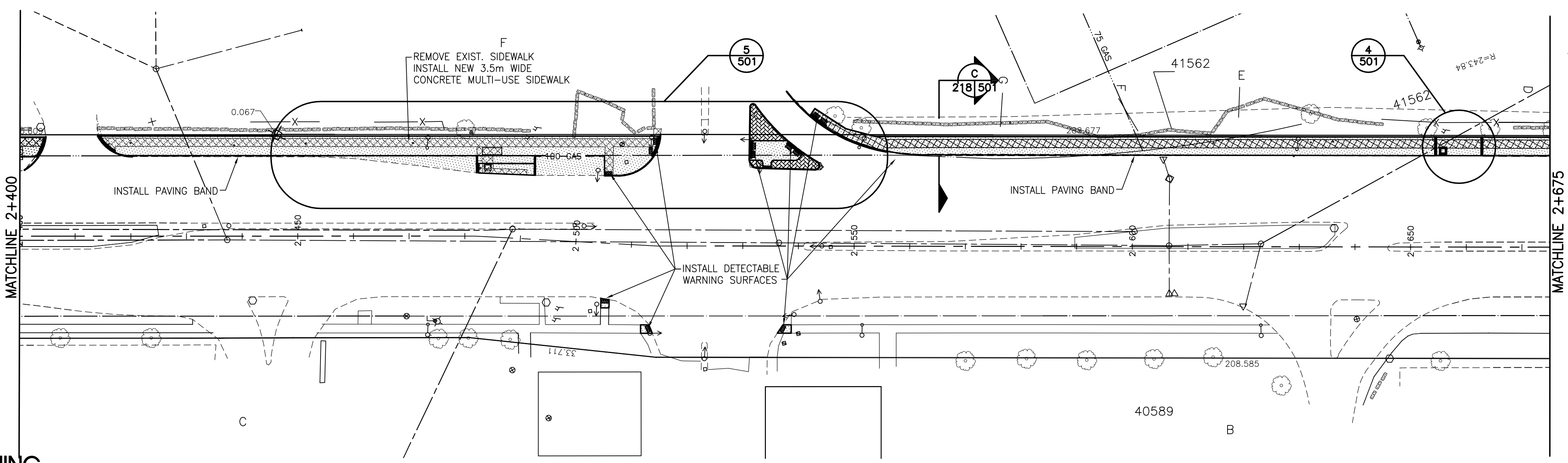


DAKOTA STREET



WARNING

IF POWER EQUIPMENT OR EXPLOSIVES ARE TO BE USED FOR EXCAVATION ON THIS PROJECT THE CONTRACTOR MUST:
 1) NOTIFY THE GAS COMPANY OF THE PROPOSED LOCATION OF EXCAVATION.
 2) TAKE PRECAUTION TO AVOID DAMAGE TO GAS COMPANY INSTALLATIONS.
 SEE PROVINCIAL REGULATION 140/92 FOR DETAILS

METRIC

WHOLE NUMBERS INDICATE MILLIMETRES
 DECIMALIZED NUMBERS INDICATE METRES

EXISTING	LEGEND-PLAN	PROPOSED	EXISTING	LEGEND-PLAN	PROPOSED	EXISTING	LEGEND-PROFILE	PROPOSED
150 WM	WATERMAIN	150 WM	----	HYDRO	----	150 WM	WATERMAIN	150 WM
300 LDS	LAND DRAINAGE SEWER	300 LDS	----	M.T.S.	----	300 LDS	HYDRANT, VALVE	300 LDS
250 WWS	WASTE WATER SEWER	250 WWS	----	CONCRETE	----	250 WWS	LAND DRAINAGE SEWER	250 WWS
○	MANHOLE	●	----	SIDEWALK - ASPHALT	▨	○	WASTE WATER SEWER	○
□	CATCH BASIN	■	----	SIDEWALK - CONCRETE	▩	×	Q PROFILE	×
▽	CURB INLET	⊕	----	SIDEWALK - REMOVAL	▨	○	NORTH OR WEST GUTTER	○
+	JUNCTIONS	+	----	PROPERTY LINE	----	○	SOUTH OR EAST GUTTER	○
▩	CULVERT	▩	(31.334)	SURVEY BAR	+	○	NORTH OR WEST R	○
----	GAS	----	----	DITCH	→	○	SOUTH OR EAST R	○
----		----	----	ELEVATION	(32.231)	△	NORTH OR WEST DITCH	----
----		----	----	SIDEWALK RAMP	▬	▽	SOUTH OR EAST DITCH	----

LOCATION APPROVED UNDERGROUND STRUCTURES
 SUPV. U/G STRUCTURES COMMITTEE DATE
 NOTE:
 LOCATION OF UNDERGROUND STRUCTURES AS SHOWN ARE BASED ON THE BEST INFORMATION AVAILABLE BUT NO GUARANTEE IS GIVEN THAT ALL EXISTING UTILITIES ARE SHOWN OR THAT THE GIVEN LOCATIONS ARE EXACT. CONFIRMATION OF EXISTENCE AND EXACT LOCATION OF ALL SERVICES MUST BE OBTAINED FROM THE INDIVIDUAL UTILITIES BEFORE PROCEEDING WITH CONSTRUCTION.

B.M. ELEV.	NO.	REVISIONS	DATE	BY
	1	ISSUED FOR TENDER	10.06.02	S.R.S.
	0	ISSUED FOR REVIEW	10.05.28	S.R.S.

Stantec Consulting Ltd.
 905 Waverley Street, Winnipeg, Manitoba
 Tel 204-489-5900 Fax 204-453-9012

DESIGNED BY	S.R.S.	CHECKED BY	V.M.M.
DRAWN BY	T.G.	APPROVED BY	S.R.S.
HOR. SCALE:	1:500	RELEASED FOR CONSTRUCTION:	
VERTICAL:	1:20	DATE	10.04.22



THE CITY OF WINNIPEG
 PUBLIC WORKS DEPARTMENT
 ENGINEERING DIVISION

DAKOTA/DUNKIRK PATHWAY-PHASE I
 WARDE AVENUE TO BISHOP GRANDIN BOULEVARD
 STA. 2+400 TO STA. 2+675

2010 ACTIVE TRANSPORTATION INFRASTRUCTURE STIMULUS PROGRAM

SHEET 10 OF 12
 CAD FILE DRAWING NUMBER 05260c-210-xxx.dwg
 CITY DRAWING NUMBER W-376-10

CONSULTANT DRAWING NO. C-218