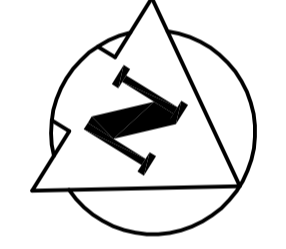
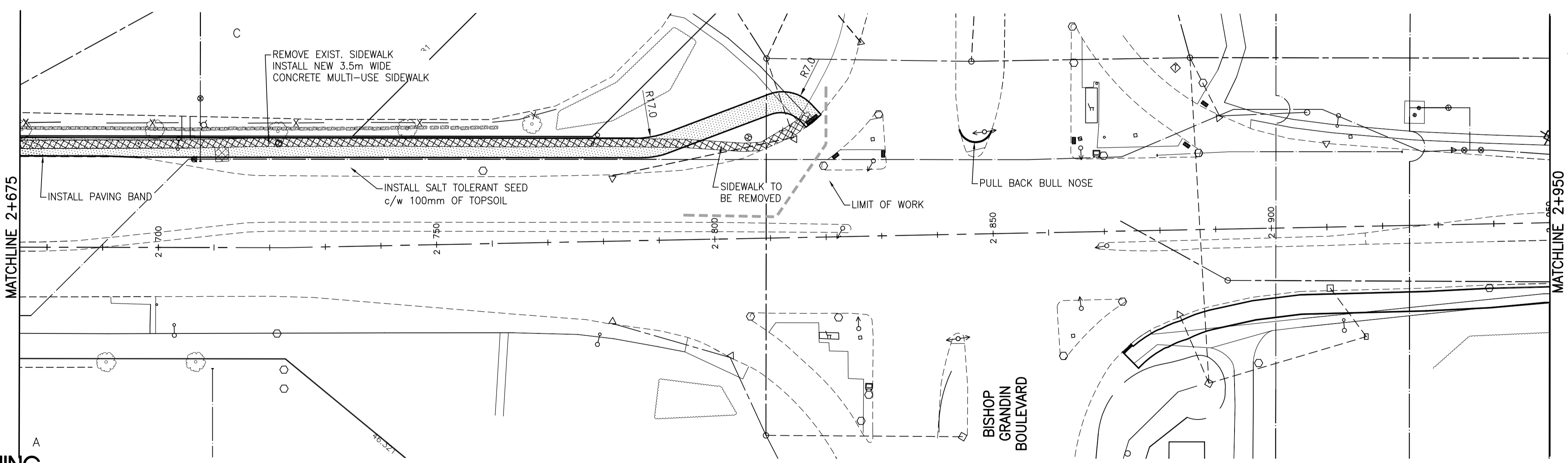


DAKOTA STREET



WARNING

IF POWER EQUIPMENT OR EXPLOSIVES ARE TO BE USED FOR EXCAVATION ON THIS PROJECT THE CONTRACTOR MUST:
 1) NOTIFY THE GAS COMPANY OF THE PROPOSED LOCATION OF EXCAVATION.
 2) TAKE PRECAUTION TO AVOID DAMAGE TO GAS COMPANY INSTALLATIONS.
 SEE PROVINCIAL REGULATION 140/92 FOR DETAILS

METRIC

WHOLE NUMBERS INDICATE MILLIMETRES
 DECIMALIZED NUMBERS INDICATE METRES

EXISTING	LEGEND-PLAN	PROPOSED	EXISTING	LEGEND-PLAN	PROPOSED	EXISTING	LEGEND-PROFILE	PROPOSED
150 WM	WATERMAIN	150 WM	HYDRO	150 WM	WATERMAIN	300 LDS	LAND DRAINAGE SEWER	300 LDS
300 LDS	LAND DRAINAGE SEWER	300 LDS	CONCRETE	250 WWS	WASTE WATER SEWER	250 WWS	WASTE WATER SEWER	250 WWS
250 WWS	WASTE WATER SEWER	250 WWS	PROPERTY LINE	MANHOLE	MANHOLE	MANHOLE	MANHOLE	MANHOLE
○	MANHOLE	●	SURVEY BAR	○	NORTH OR WEST GUTTER	○	SOUTH OR EAST GUTTER	○
□	CATCH BASIN	■	DITCH	◇	NORTH OR WEST DITCH	◇	SOUTH OR EAST DITCH	◇
▽	CURB INLET	⊕	ELEVATION	△	NORTH OR WEST DITCH	△	SOUTH OR EAST DITCH	△
+	JUNCTIONS	+	SIDEWALK RAMP	▽	SOUTH OR EAST DITCH	▽	SOUTH OR EAST DITCH	▽
▬	CULVERT	▬	LEGEND-PLAN	▬	LEGEND-PROFILE	▬	LEGEND-PROFILE	▬
▬	GAS	▬	PROPOSED	▬	PROPOSED	▬	PROPOSED	▬

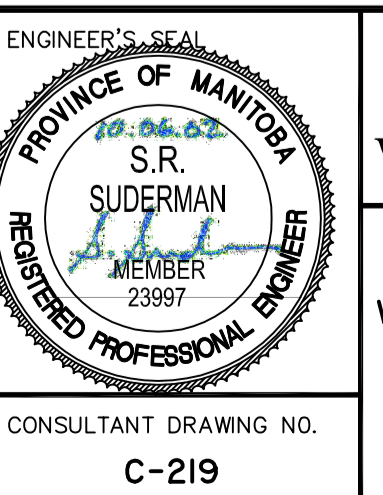
LOCATION APPROVED UNDERGROUND STRUCTURES

NOTE:
 LOCATION OF UNDERGROUND STRUCTURES AS SHOWN ARE BASED ON THE BEST INFORMATION AVAILABLE BUT NO GUARANTEE IS GIVEN THAT THE GIVEN LOCATIONS ARE EXACT. CONFIRMATION OF EXISTENCE AND EXACT LOCATION OF ALL SERVICES MUST BE OBTAINED FROM THE INDIVIDUAL UTILITIES BEFORE PROCEEDING WITH CONSTRUCTION.

NO.	REVISIONS	DATE	BY
1	ISSUED FOR TENDER	10.06.02	S.R.S.
0	ISSUED FOR REVIEW	10.05.28	S.R.S.

Stantec Consulting Ltd.
 905 Waverley Street, Winnipeg, Manitoba
 Tel 204-489-5900 Fax 204-453-9012

DESIGNED BY	S.R.S.	CHECKED BY	V.M.M.
DRAWN BY	T.G.	APPROVED BY	S.R.S.
HOR. SCALE:	1:500	RELEASED FOR CONSTRUCTION:	
VERTICAL:	1:20	DATE	10.04.22



THE CITY OF WINNIPEG
 PUBLIC WORKS DEPARTMENT
 ENGINEERING DIVISION

DAKOTA/DUNKIRK PATHWAY-PHASE I
 WARDE AVENUE TO BISHOP GRANDIN BOULEVARD
 STA. 2+675 TO STA. 2+950

2010 ACTIVE TRANSPORTATION INFRASTRUCTURE STIMULUS PROGRAM

SHEET 11 OF 12
 CAD FILE DRAWING NUMBER 05260c-210-xxx.dwg
 CITY DRAWING NUMBER W-376-11

