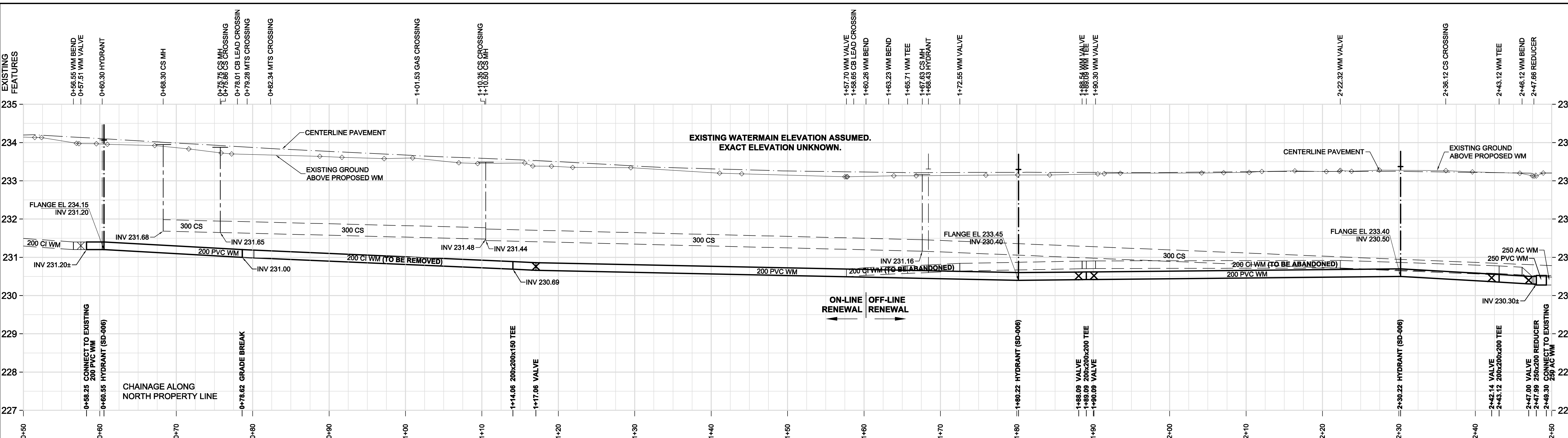


D SIZE 22" x 34" (559mm x 864mm)

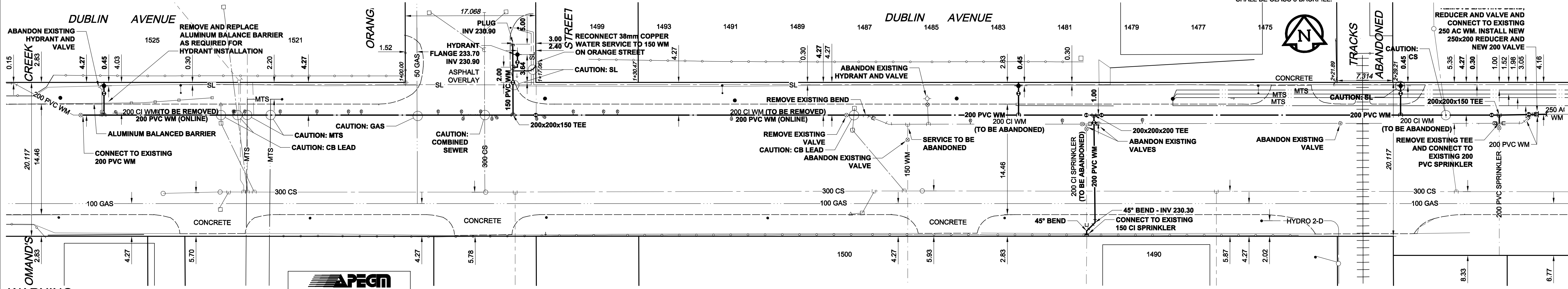
PLOT: 10/05/18 12:27:56 PM

AECOM REVIEW DRFT CHK
AECOM FILE NAME: 060150689_01-C-1001_R0.dwg. Saved By: [redacted]



ADDRESS	NATURE OF SERVICE	SIZE	MATERIAL	DISTANCE SC TO PROPERTY	POSITION OF SC (curb stop)			POSITION OF CC (corp)			COMMENTS:
					Long	Short	of	Long	Short	of	
1525 DUBLIN AV	COMMERCIAL	1 1/2 in (38 mm)	COPPER		Long: (21.0 m)	Short: (24.2 m)	of WL	Long: (0.3 m)	Short: (0.3 m)	of SC	
1521 DUBLIN AV	COMMERCIAL	1 1/2 in (38 mm)	COPPER		Long: (20.0 m)	Short: (20.0 m)	of WL	Long: (0.2 m)	Short: (0.2 m)	of SC	
1474-1499 DUBLIN AV	COMMERCIAL	1 1/2 in (38 mm)	COPPER		Long: (32.3 m)	Short: (8.2 m)	of NL	Long: (51.5 m)	Short: (8.2 m)	of EL	1ST HYDRANT EAST OF ORANGE CURB STOP ON ORANGE, NORTH OF DUBLIN. RECONNECT TO NEW 150 STUB ON ORANGE
1500 DUBLIN AV	INDUSTRIAL	8 in (200 mm)	PVC		Long: (126.0 m)	Short: (126.0 m)	of EL	Long: (126.0 m)	Short: (126.0 m)	of EL	ORANGE
1500 DUBLIN AV	SPRINKLER	8 in (200 mm)	CI		Long: (72.1 m)	Short: (72.1 m)	of EL	Long: (72.1 m)	Short: (72.1 m)	of EL	ORANGE
1500 DUBLIN AV	INDUSTRIAL	6 in (150 mm)	CI		Long: (48.6 m)	Short: (48.6 m)	of EL	Long: (48.6 m)	Short: (48.6 m)	of EL	ORANGE

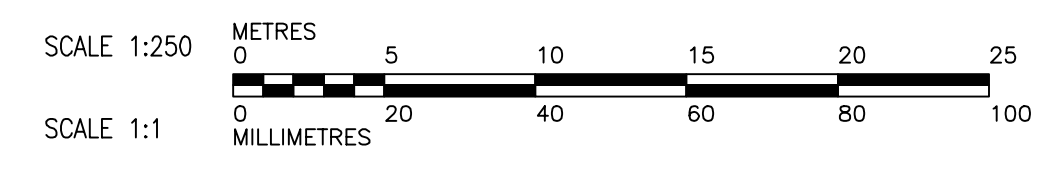
- CONSTRUCTION NOTES:**
- EXPOSE WATERMAIN CONNECTIONS AND CONFIRM INVERTS PRIOR TO CONSTRUCTION
 - INSTALL WATERMAIN BY TRENCHLESS METHODS.
 - ALL MATERIALS SHALL CONFORM TO THE CITY OF WINNIPEG STANDARD CONSTRUCTION SPECIFICATIONS.
 - MINIMUM COVER TO TOP OF PROPOSED WATERMAIN SHALL BE 2.5m FROM GUTTER ELEVATION.
 - INSTALL ALL HYDRANTS WITH FLANGE ELEVATION 50mm TO 150mm ABOVE FINISHED GRADE.
 - REPLACE ALL EXISTING LEAD SERVICES FROM THE PROPOSED WATERMAIN TO PROPERTY LINE.
 - NOTIFY ALL AFFECTED RESIDENTS AND BUSINESSES 24 HOURS IN ADVANCE OF ANY WATER SHUTDOWN OR DISRUPTION OF SERVICE.
 - LOCATION OF WATER SERVICES SHOWN ON DRAWINGS ARE APPROXIMATE. THE CONTRACTOR SHALL FIELD LOCATE ALL WATER SERVICES PRIOR TO CONSTRUCTION.
 - BACKFILL UNDER DUBLIN AVENUE PAVEMENT SHALL BE CLASS 1 BACKFILL. BACKFILL UNDER OR WITHIN 1.0m OF OTHER PAVEMENT SHALL BE CLASS 3 BACKFILL. BACKFILL IN BOULEVARDS SHALL BE CLASS 5 BACKFILL.



WARNING
IF POWER EQUIPMENT OR EXPLOSIVES ARE TO BE USED FOR EXCAVATION ON THIS PROJECT, THE CONTRACTOR MUST NOTIFY THE GAS COMPANY OF THE PROPOSED LOCATION OF EXCAVATION. TAKE PRECAUTION TO AVOID DAMAGE TO GAS COMPANY INSTALLATIONS. SEE PROVINCIAL REGULATION 140/92 FOR DETAILS



METRIC
WHOLE NUMBERS INDICATE MILLIMETRES
DECIMALIZED NUMBERS INDICATE METRES

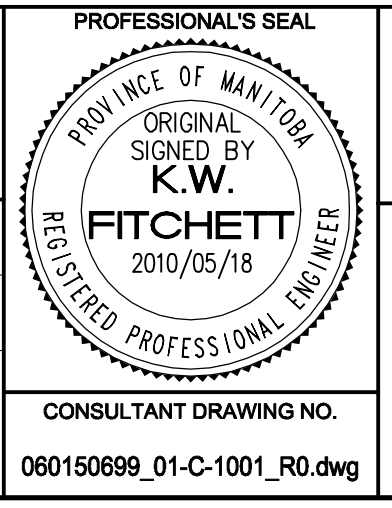


150 WM	WATERMAIN	150 WM	CURB STOP	150 WM	WATERMAIN	150 WM
Hydrant	HYDRANT	Reducer	REDUCER	Hydrant	HYDRANT	Reducer
Valve	VALVE	Coupling	COUPLING	Valve	VALVE	Coupling
300 LDS	LAND DRAINAGE SEWER	Anode	ANODE	300 LDS	LAND DRAINAGE SEWER	Anode
250 WWS	WASTE WATER SEWER	Hydro	HYDRO	250 WWS	WASTE WATER SEWER	Hydro
Manhole	MANHOLE	MTS	MTS	Manhole	MANHOLE	MTS
Catch Basin	CATCH BASIN	Gas	GAS	Catch Basin	CATCH BASIN	Gas
Curb Inlet	CURB INLET	Testhole	TESTHOLE	Curb Inlet	CURB INLET	Testhole
Culvert	CULVERT	Lamp Standard	LAMP STANDARD	Culvert	CULVERT	Lamp Standard
Pipe Abandonments	PIPE ABANDONMENTS	Tree	TREE	Pipe Abandonments	PIPE ABANDONMENTS	Tree
Survey Bar	SURVEY BAR			Survey Bar	SURVEY BAR	
EXISTING	LEGEND - PLAN	NEW	LEGEND - PLAN	EXISTING	LEGEND - PROFILE	NEW

LOCATION APPROVED UNDERGROUND STRUCTURES
SUPR. U/G STRUCTURES DATE COMMITTEE
NOTE: LOCATION OF UNDERGROUND STRUCTURES AS SHOWN ARE BASED ON THE BEST INFORMATION AVAILABLE. BUT NO GUARANTEE IS GIVEN THAT ALL EXISTING UTILITIES ARE SHOWN OR THAT THE GIVEN LOCATIONS ARE EXACT. CONFIRMATION OF EXISTENCE AND EXACT LOCATION OF ALL SERVICES MUST BE OBTAINED FROM THE INDIVIDUAL UTILITIES BEFORE PROCEEDING WITH CONSTRUCTION.

NO.	REVISIONS	DATE	BY
0	ISSUED FOR TENDER	10/05/18	JP
A	ISSUED FOR REVIEW	10/05/10	GSK
		YYMMDD	

DESIGNED BY	GSK	CHECKED BY	GSK
DRAWN BY	JP	APPROVED BY	KWF
HOR. SCALE	1:250	RELEASED FOR CONSTRUCTION	S. COURNOYER
VERT. SCALE	1:50	DATE	10/05/18



THE CITY OF WINNIPEG WATER AND WASTE DEPARTMENT

2010 WATERMAIN RENEWALS CONTRACT 5

DUBLIN AVENUE OMAND'S CREEK TO 130m EAST OF ORANGE STREET

SHEET 1 OF 9
CITY DRAWING NUMBER
D-12046

BID OPPORTUNITY NO. 408-2010