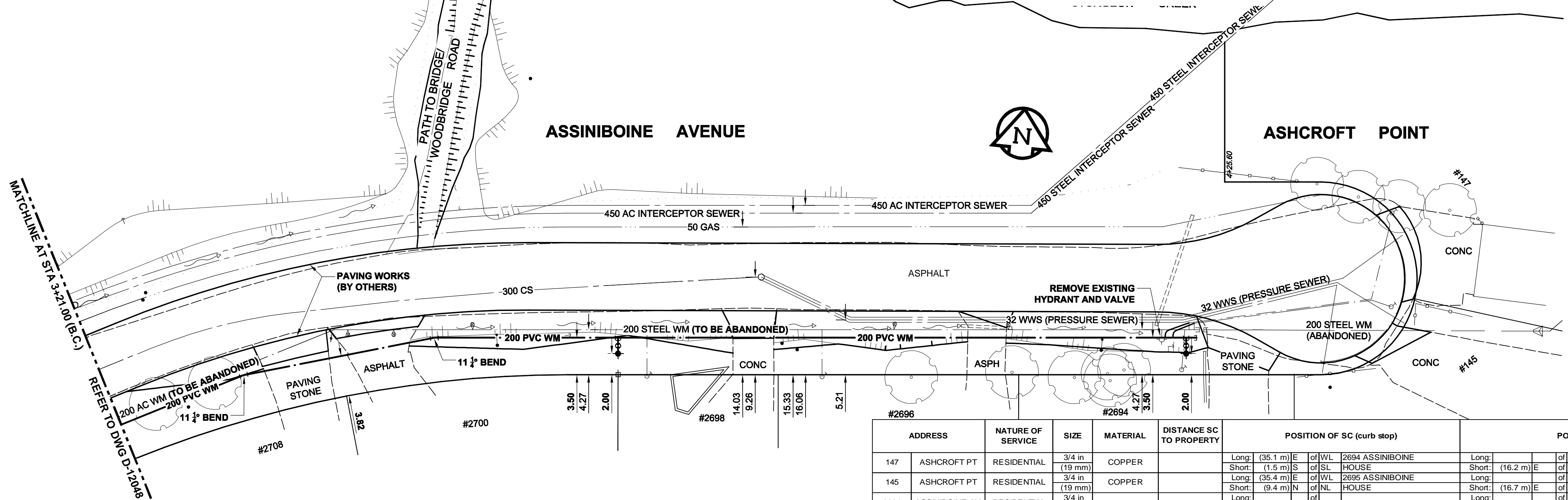
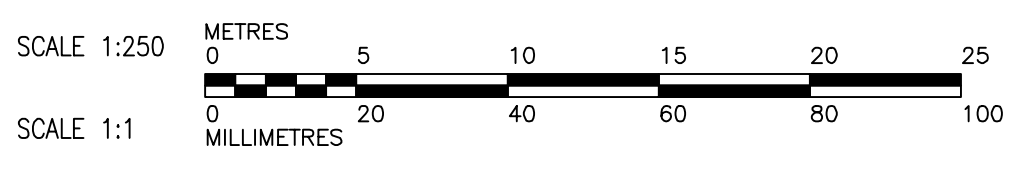


- CONSTRUCTION NOTES:**
1. EXPOSE WATERMAIN CONNECTIONS AND CONFIRM INVERTS PRIOR TO CONSTRUCTION
 2. INSTALL WATERMAIN BY TRENCHLESS METHODS.
 3. ALL MATERIALS SHALL CONFORM TO THE CITY OF WINNIPEG STANDARD CONSTRUCTION SPECIFICATIONS.
 4. MINIMUM COVER TO TOP OF PROPOSED WATERMAIN SHALL BE 2.5m FROM STREET CENTERLINE.
 5. INSTALL ALL HYDRANTS WITH FLANGE ELEVATION 50mm TO 150mm ABOVE FINISHED GRADE.
 6. REPLACE ALL EXISTING LEAD SERVICES FROM THE PROPOSED WATERMAIN TO PROPERTY LINE.
 7. NOTIFY ALL AFFECTED RESIDENTS AND BUSINESSES 24 HOURS IN ADVANCE OF ANY WATER SHUTDOWN OR DISRUPTION OF SERVICE.
 8. LOCATION OF WATER SERVICES SHOWN ON DRAWINGS ARE APPROXIMATE. THE CONTRACTOR SHALL FIELD LOCATE ALL WATER SERVICES PRIOR TO CONSTRUCTION.
 9. BACKFILL UNDER OR WITHIN 1.0m OF PAVEMENTS, INCLUDING SIDEWALKS SHALL BE CLASS 3 BACKFILL EXCEPT AS NOTED. BACKFILL IN BOULEVARDS SHALL BE CLASS 5 BACKFILL.

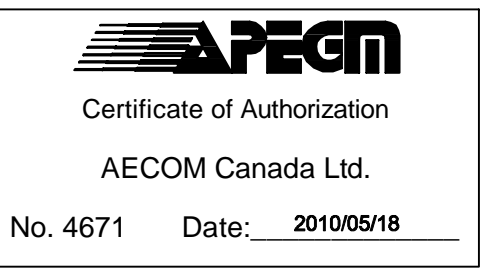


WARNING
IF POWER EQUIPMENT OR EXPLOSIVES ARE TO BE USED FOR EXCAVATION ON THIS PROJECT, THE CONTRACTOR MUST NOTIFY THE GAS COMPANY OF THE PROPOSED LOCATION OF EXCAVATION. TAKE PRECAUTION TO AVOID DAMAGE TO GAS COMPANY INSTALLATIONS. SEE PROVINCIAL REGULATION 140/92 FOR DETAILS



METRIC
WHOLE NUMBERS INDICATE MILLIMETRES
DECIMALIZED NUMBERS INDICATE METRES

ADDRESS	NATURE OF SERVICE	SIZE	MATERIAL	DISTANCE SC TO PROPERTY	POSITION OF SC (curb stop)	POSITION OF CC (corp)	COMMENTS:
147 ASHCROFT PT	RESIDENTIAL	3/4 in (19 mm)	COPPER		Long: (35.1 m) E of WL 2694 ASSINIBOINE Short: (11.5 m) S of SL HOUSE	Long: (16.2 m) E of WPL 2694 ASSINIBOINE	
145 ASHCROFT PT	RESIDENTIAL	3/4 in (19 mm)	COPPER		Long: (35.4 m) E of WL 2695 ASSINIBOINE Short: (9.4 m) N of NL HOUSE	Long: (16.7 m) E of WPL 2694 ASSINIBOINE	
2694 ASSINIBOINE AV	RESIDENTIAL	3/4 in (19 mm)			Long: (2.6 m) W of E SIDE Short: (0.0 m)	Long: of Short: of	
2696 ASSINIBOINE AV	RESIDENTIAL	3/4 in (19 mm)			Long: (0.5 m) W of W SIDE Short: (0.0 m)	Long: of Short: of	
2698 ASSINIBOINE AV	RESIDENTIAL	3/4 in (19 mm)			Long: (1.2 m) E of W SIDE Short: (0.0 m)	Long: of Short: of	
2700 ASSINIBOINE AV	RESIDENTIAL	3/4 in (19 mm)			Long: (4.6 m) E of W SIDE Short: (0.0 m)	Long: of Short: of	
2708 ASSINIBOINE AV	RESIDENTIAL	3/4 in (19 mm)			Long: (5.2 m) W of EL Short: (0.2 m) E of SC	Long: of Short: of	



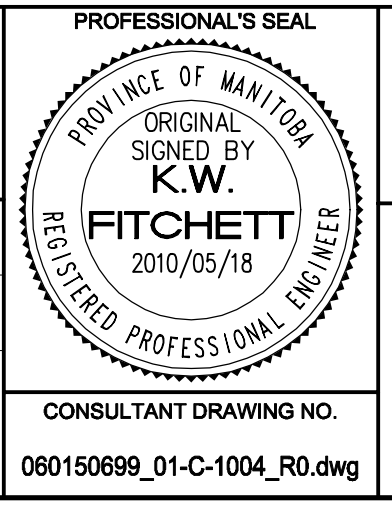
BID OPPORTUNITY NO. 408-2010

EXISTING	LEGEND - PLAN	NEW	EXISTING	LEGEND - PROFILE	NEW
150 WM	WATERMAIN	150 WM	150 WM	WATERMAIN	150 WM
300 LDS	LAND DRAINAGE SEWER	300 LDS	300 LDS	LAND DRAINAGE SEWER	300 LDS
250 WWS	WASTE WATER SEWER	250 WWS	250 WWS	WASTE WATER SEWER	250 WWS
MANHOLE		MANHOLE	MANHOLE		MANHOLE
CATCH BASIN		CATCH BASIN	CATCH BASIN		CATCH BASIN
CULVERT		CULVERT	CULVERT		CULVERT
PIPE ABANDONMENTS		PIPE ABANDONMENTS	PIPE ABANDONMENTS		PIPE ABANDONMENTS
SURVEY BAR		SURVEY BAR	SURVEY BAR		SURVEY BAR
HYDRANT		HYDRANT	HYDRANT		HYDRANT
VALVE		VALVE	VALVE		VALVE
REDUCER		REDUCER	REDUCER		REDUCER
COUPLING		COUPLING	COUPLING		COUPLING
ANODE		ANODE	ANODE		ANODE
MTS		MTS	MTS		MTS
GAS		GAS	GAS		GAS
TESTHOLE		TESTHOLE	TESTHOLE		TESTHOLE
LAMP STANDARD		LAMP STANDARD	LAMP STANDARD		LAMP STANDARD
TREE		TREE	TREE		TREE

LOCATION APPROVED UNDERGROUND STRUCTURES
SUPR. U/G STRUCTURES DATE COMMITTEE
NOTE: LOCATION OF UNDERGROUND STRUCTURES AS SHOWN ARE BASED ON THE BEST INFORMATION AVAILABLE. BUT NO GUARANTEE IS GIVEN THAT ALL EXISTING UTILITIES ARE SHOWN OR THAT THE GIVEN LOCATIONS ARE EXACT. CONFIRMATION OF EXISTENCE AND EXACT LOCATION OF ALL SERVICES MUST BE OBTAINED FROM THE INDIVIDUAL UTILITIES BEFORE PROCEEDING WITH CONSTRUCTION.

41-050	N.W. Corner Assiniboine Ave and Glendale Blvd. Tabled on top of 0.00m (83R503) dia. x 2.4m pipe, 8.8m W. of W. wall produced from the S. of No. 2748 Assiniboine Ave and 13.4m S. of N. wall of No. 127 Glendale Blvd. or 5.4m E. of W.L. Glendale Blvd and 1.3m N. of N.L. Assiniboine Ave
BM ELEV	233.918
DESIGNED BY	GSK
CHECKED BY	GSK
DRAWN BY	JP
APPROVED BY	KWF
HOR. SCALE	1:250
VERT. SCALE	1:50
RELEASED FOR CONSTRUCTION	S. COURNOYER
DATE	10/05/18

AECOM
This drawing has been prepared for the use of AECOM's client and may not be used, reproduced or relied upon by third parties, except as agreed by AECOM and its client, as required by law or for use by governmental reviewing agencies. AECOM accepts no responsibility, and denies any liability whatsoever, to any party that modifies this drawing without AECOM's express written consent. Do not scale this document. All measurements must be obtained from stated dimensions.



THE CITY OF WINNIPEG WATER AND WASTE DEPARTMENT
2010 WATERMAIN RENEWALS CONTRACT 5
ASSINIBOINE AVENUE AND ASHCROFT POINT STATION 3+21.00 TO ASHCROFT POINT

SHEET 4 OF 9
CITY DRAWING NUMBER
D-12049