

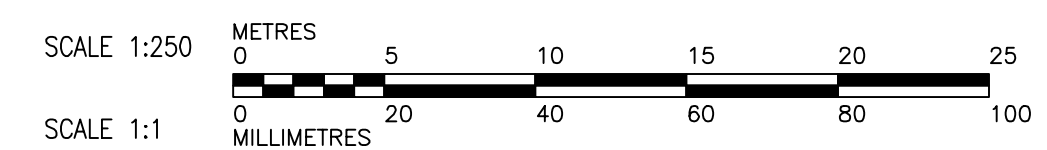
CONSTRUCTION NOTES:

1. EXPOSE WATERMAIN CONNECTIONS AND CONFIRM INVERTS PRIOR TO CONSTRUCTION
2. INSTALL WATERMAIN BY TRENCHLESS METHODS.
3. ALL MATERIALS SHALL CONFORM TO THE CITY OF WINNIPEG STANDARD CONSTRUCTION SPECIFICATIONS.
4. MINIMUM COVER TO TOP OF PROPOSED WATERMAIN SHALL BE 2.5m FROM STREET CENTERLINE.
5. INSTALL ALL HYDRANTS WITH FLANGE ELEVATION 50mm TO 150mm ABOVE FINISHED GRADE.
6. REPLACE ALL EXISTING LEAD SERVICES FROM THE PROPOSED WATERMAIN TO PROPERTY LINE.
7. NOTIFY ALL AFFECTED RESIDENTS AND BUSINESSES 24 HOURS IN ADVANCE OF ANY WATER SHUTDOWN OR DISRUPTION OF SERVICE.
8. LOCATION OF WATER SERVICES SHOWN ON DRAWINGS ARE APPROXIMATE. THE CONTRACTOR SHALL FIELD LOCATE ALL WATER SERVICES PRIOR TO CONSTRUCTION.
9. BACKFILL UNDER OR WITHIN 1.0m OF PAVEMENTS, INCLUDING SIDEWALKS SHALL BE CLASS 3 BACKFILL EXCEPT AS NOTED. BACKFILL IN BOULEVARDS SHALL BE CLASS 5 BACKFILL.

ADDRESS	NATURE OF SERVICE	SIZE	MATERIAL	DISTANCE SC TO PROPERTY	POSITION OF SC (curb stop)	POSITION OF CC (corp)	COMMENTS:
70 ASHERN RD	RESIDENTIAL	3/4 in (19 mm)	COPPER		Long: (9.1 m) S of NPL Short: (4.9 m) N of SL BLDG	Long: (2.4 m) N of VALVE OPP NW CNR 67 ASHERN RD Short: (0.0 m) of	
67 ASHERN RD	RESIDENTIAL	3/4 in (19 mm)	COPPER		Long: (7.0 m) S of NPL Short: (5.6 m) S of NL BLDG	Long: (0.0 m) of Short: (48.8 m) N of HYD OPP 55 ASHERN RD	
66 ASHERN RD	RESIDENTIAL	3/4 in (19 mm)	COPPER		Long: (9.4 m) S of NPL Short: (5.2 m) N of SL BLDG	Long: (0.0 m) of Short: (47.5 m) N of HYD OPP 55 ASHERN RD	
62 ASHERN RD	RESIDENTIAL	0 in (0 mm)			Long: (7.3 m) S of NPL Short: (3.1 m) S of NL BLDG	Long: (0.0 m) of Short: (33.2 m) N of HYD OPP 55 ASHERN RD	
59 ASHERN RD	RESIDENTIAL	3/4 in (19 mm)	COPPER		Long: (9.1 m) S of NPL Short: (4.5 m) N of SL BLDG	Long: (0.0 m) of Short: (32.3 m) N of HYD OPP 55 ASHERN RD	
58 ASHERN RD	RESIDENTIAL	3/4 in (19 mm)	COPPER		Long: (0.0 m) of Short: (5.8 m) S of NL BLDG	Long: (0.0 m) of Short: (21.0 m) N of HYD OPP 55 ASHERN RD	
55 ASHERN RD	RESIDENTIAL	3/4 in (19 mm)	COPPER		Long: (8.8 m) S of NPL Short: (7.0 m) N of SL BLDG	Long: (0.0 m) of Short: (19.8 m) N of HYD OPP 55 ASHERN RD	
54 ASHERN RD	RESIDENTIAL	3/4 in (19 mm)	COPPER		Long: (0.0 m) of Short: (7.9 m) S of NL BLDG	Long: (0.0 m) of Short: (1.8 m) N of HYD OPP 55 ASHERN RD	
51 ASHERN RD	RESIDENTIAL	3/4 in (19 mm)	COPPER		Long: (11.3 m) S of NPL Short: (4.1 m) N of SL BLDG	Long: (0.0 m) of Short: (1.2 m) N of HYD OPP 55 ASHERN RD	
50 ASHERN RD	RESIDENTIAL	3/4 in (19 mm)	COPPER		Long: (9.1 m) S of NPL Short: (5.8 m) N of SL BLDG	Long: (0.0 m) of Short: (0.0 m) S of HYD OPP 55 ASHERN RD	
47 ASHERN RD	RESIDENTIAL	3/4 in (19 mm)	COPPER		Long: (7.6 m) S of NPL Short: (4.7 m) S of NL BLDG	Long: (0.0 m) of Short: (30.5 m) S of HYD OPP 55 ASHERN RD	
46 ASHERN RD	RESIDENTIAL	3/4 in (19 mm)	COPPER		Long: (7.6 m) S of NPL Short: (6.2 m) N of SL BLDG	Long: (0.0 m) of Short: (31.7 m) S of HYD OPP 55 ASHERN RD	

WARNING
 IF POWER EQUIPMENT OR EXPLOSIVES ARE TO BE USED FOR EXCAVATION ON THIS PROJECT, THE CONTRACTOR MUST NOTIFY THE GAS COMPANY OF THE PROPOSED LOCATION OF EXCAVATION. TAKE PRECAUTION TO AVOID DAMAGE TO GAS COMPANY INSTALLATIONS. SEE PROVINCIAL REGULATION 140/92 FOR DETAILS

METRIC
 WHOLE NUMBERS INDICATE MILLIMETRES
 DECIMALIZED NUMBERS INDICATE METRES

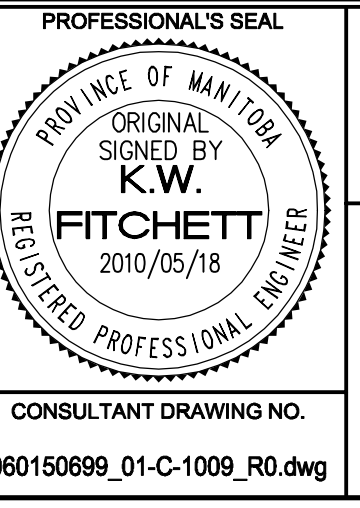


150 WM	WATERMAIN	150 WM		CURB STOP		150 WM	WATERMAIN	150 WM	
+	HYDRANT	+		REDUCER		+	HYDRANT	+	
○	VALVE	○		COUPLING		○	VALVE	○	
⊗	LAND DRAINAGE SEWER	⊗		ANODE		⊗	LAND DRAINAGE SEWER	⊗	
⊙	WASTE WATER SEWER	⊙		HYDRO		⊙	WASTE WATER SEWER	⊙	
○	MANHOLE	○		MTS		○	PAVEMENT CROWN	○	
□	CATCH BASIN	□		GAS		□	NW PROPERTY LINE	□	
△	CURB INLET	△		TESTHOLE		△	S/E PROPERTY LINE	△	
○	CULVERT	○		LAMP STANDARD		○	N/W GUTTER	○	
—	PIPE ABANDONMENTS	—		TREE		—	S/E GUTTER	—	
+	SURVEY BAR	+				+		+	
—	EXISTING	—	NEW	LEGEND - PLAN	NEW	—	EXISTING	—	NEW

LOCATION APPROVED UNDERGROUND STRUCTURES
 SUPR. U/G STRUCTURES DATE COMMITTEE
 NOTE: LOCATION OF UNDERGROUND STRUCTURES AS SHOWN ARE BASED ON THE BEST INFORMATION AVAILABLE. BUT NO GUARANTEE IS GIVEN THAT ALL EXISTING UTILITIES ARE SHOWN OR THAT THE GIVEN LOCATIONS ARE EXACT. CONFIRMATION OF EXISTENCE AND EXACT LOCATION OF ALL SERVICES MUST BE OBTAINED FROM THE INDIVIDUAL UTILITIES BEFORE PROCEEDING WITH CONSTRUCTION.

NO.	REVISIONS	DATE	BY
0	ISSUED FOR TENDER	10/05/18	JP
A	ISSUED FOR REVIEW	10/05/10	GSK
		YYMMDD	

DESIGNED BY	GSK	CHECKED BY	
DRAWN BY	JP	APPROVED BY	KWF
HOR. SCALE	1:250	RELEASED FOR CONSTRUCTION	S. COURNOYER
VERT. SCALE	1:50	DATE	10/05/18



THE CITY OF WINNIPEG WATER AND WASTE DEPARTMENT

2010 WATERMAIN RENEWALS CONTRACT 5

ASHERN ROAD STATION 1+90 TO ASHERN ROAD (NORTH LEG)

SHEET 9 OF 9
 CITY DRAWING NUMBER D-12054
 REV 0

BID OPPORTUNITY NO. 408-2010