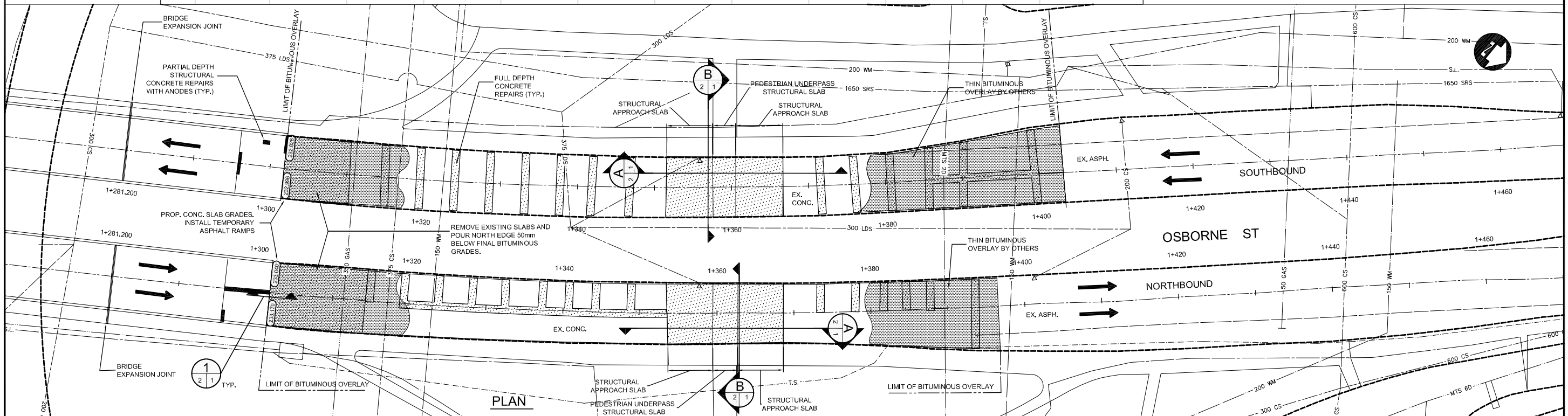


- NOTES:**
1. THIN BITUMINOUS OVERLAY BY CITY OF WINNIPEG, STREETS MAINTENANCE DIVISION. CONTRACTOR SHALL COORDINATE CONSTRUCTION WORKS TO ENSURE SEAMLESS CONSTRUCTION WORKS WITH THE OVERLAY WORKS.
 2. TEMPORARY ASPHALT RAMPS SHALL BE INSTALLED PRIOR TO ALLOWING TRAFFIC ON ROADWAY WHERE NECESSARY.



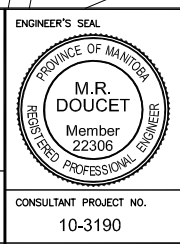
150 mm W.M.	150 mm W.M.	HYDRO	150 mm W.M.	WATERMAIN	150 mm W.M.
		M.T.S.		HYDRANT	
		CONCRETE		LAND DRAINAGE SEWER	
		PLANING		WASTE WATER SEWER	
		SIDEWALK		NORTH/WEST GUTTER	
		PAVING STONES		SOUTH/EAST GUTTER	
		PARTIAL DEPTH REPAIR		NORTH/WEST T/LANE	
		PROPERTY LINE		SOUTH/EAST T/LANE	
		SURVEY BAR		SOUTH/EAST T/LANE	
		PARAPLEGIC RAMP		SOUTH/EAST T/LANE	
				SOUTH/EAST T/LANE	

UNDERGROUND STRUCTURES	DATE
SUPV. U/G STRUCTURES COMMITTEE	

NOTE:
LOCATION OF UNDERGROUND STRUCTURES AS SHOWN ARE BASED ON THE BEST INFORMATION AVAILABLE. BUT NO GUARANTEE IS GIVEN THAT ALL EXISTING UTILITIES ARE SHOWN OR THAT THE GIVEN LOCATIONS ARE EXACT. LOCATION OF UTILITIES MUST BE OBTAINED FROM THE INDIVIDUAL UTILITIES BEFORE PROCEEDING WITH CONSTRUCTION.

B.M.	NO.	REVISIONS	DATE	BY
FIRE HYDRANT (N: 5524482.826 E: 634513.381)				
ELEV. 232.729				
0	ISSUED FOR TENDER	20-05-10	MRD	

DESIGNED BY	MRD
DRAWN BY	MRD
CHECKED BY	DBW
APPROVED BY	
HOR. SCALE	1:250
VERTICAL	1:10
RELEASED FOR CONSTRUCTION	



THE CITY OF WINNIPEG
PUBLIC WORKS DEPARTMENT

2010 BRIDGE MAINTENANCE PROGRAM
CHURCHILL DRIVE PEDESTRIAN UNDERPASS

PLAN & PROFILES
OSBORNE STREET PAVEMENT WORKS

CITY DRAWING NUMBER
U216-10-01

SHEET 1 OF 2

BID OPP. NO.
413-2010

CONSULTANT PROJECT NO.
10-3190