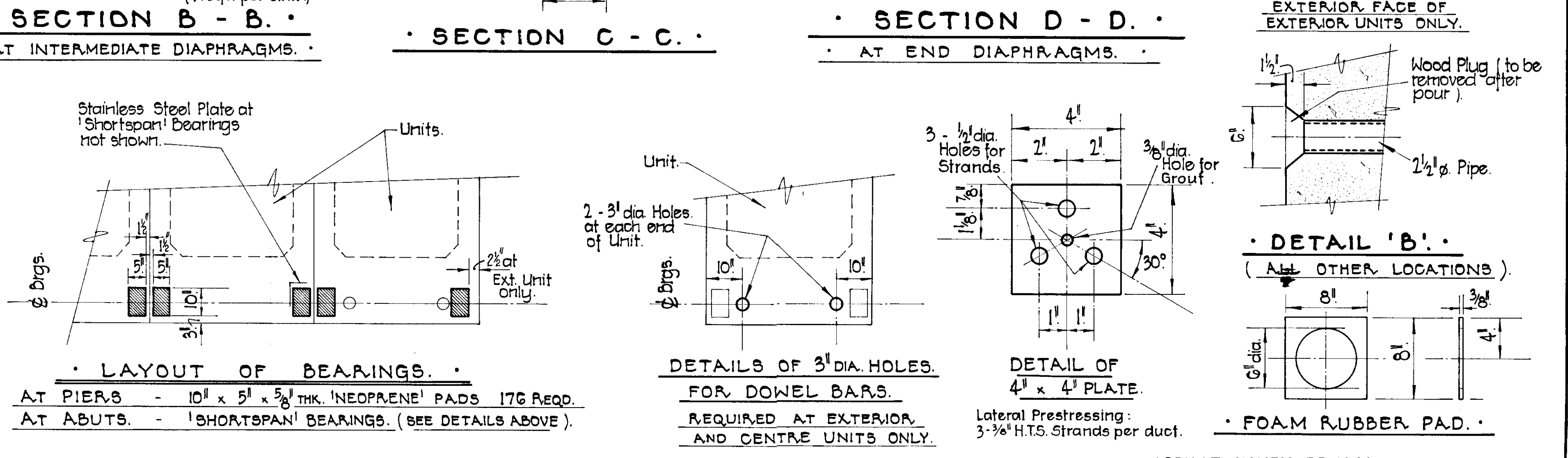
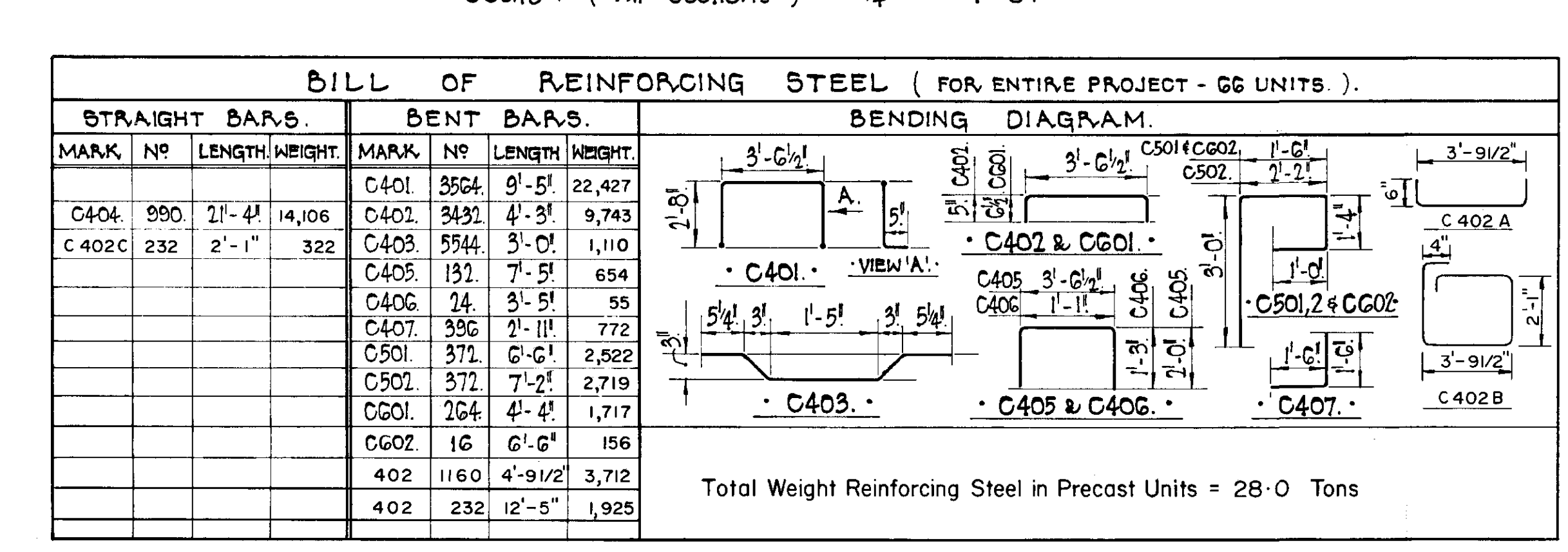


BILL OF REINFORCING STEEL (FOR ENTIRE PROJECT - 66 UNITS.)

STRAIGHT BARS				BENT BARS			
MARK	Nº	LENGTH	WEIGHT	MARK	Nº	LENGTH	WEIGHT
C404	990	21'-4"	14,106	C401	3504	9'-5"	22,427
C402C	232	2'-1"	322	C402	3432	4'-3"	9,743
				C403	5544	3'-0"	1,110
				C405	132	7'-5"	654
				C406	24	3'-5"	55
				C407	396	2'-11"	772
				C501	371	6'-6"	2,522
				C502	372	7'-2"	2,719
				C601	264	4'-4"	1,717
				C602	16	6'-6"	156
				402	1160	4'-9 1/2"	3,712
				402	232	12'-5"	1,925

Total Weight Reinforcing Steel in Precast Units = 28.0 Tons



NOTES:

CONCRETE IN PRE-CAST CHANNEL UNITS:
Minimum ultimate strength at 28 days 5000 p.s.i.
Minimum ultimate strength at transfer 4000 p.s.i.
Maximum size of aggregate 3/4".
Admixtures shall be water-reducing and non-retarding type. See Specifications.

PRESTRESSING STRANDS: High Strength 1/2" nominal dia.
Minimum ultimate tensile strength 225,000 p.s.i.
Initial Force per Strand 25.2 kips.

REINFORCING STEEL: shall be of intermediate Grade conforming to A.S.T.M. Spec. A. 15 - 58T and shall be deformed in accordance with A.S.T.M. Spec. A. 305 - 56T.
Clear cover to reinforcing steel - 1" min.
Ends of strands shall be burned off and ground flush with the ends of the Units. The ends of the Units to be painted with roofing asphalt or coal tar.
Tops of Units shall be given a broom finish.

Tolerance of Unit Dimensions: Width - 0 to -1/8" max. Length - 0 to -1/4" max.
Complete shop drawings and elongation calculations shall be submitted to the Engineer prior to casting.
Contractor shall notify the Engineer of the time the Units are to be cast at least 2 weeks in advance of that date.
For all notes regarding Lateral prestressing, handling and erection of Units see Drg. 785-G006.
All edges shall be rounded to 3/4" radius.

DAMAS AND SMITH LIMITED
CONSULTING ENGINEERS
TORONTO · LONDON · WINNIPEG

THE METROPOLITAN CORPORATION OF GREATER WINNIPEG
STREETS AND TRANSIT DIVISION
METRO ROUTE 20 RELOCATION - C.N.R. OVERHEAD
PRECAST PRESTRESSED DECK UNITS

ASBUILT NOVEMBER 1968

1	HQ.	JAN 68	DETAILS	
REV.	BY	DATE	DESCRIPTION	

DRAWN M.S. CHECK B.F. Approved [Signature]
DATE OCT. 67 SCALE AS SHOWN [Signature] Engineer of Streets and Traffic
DRAWING No. 785-G007