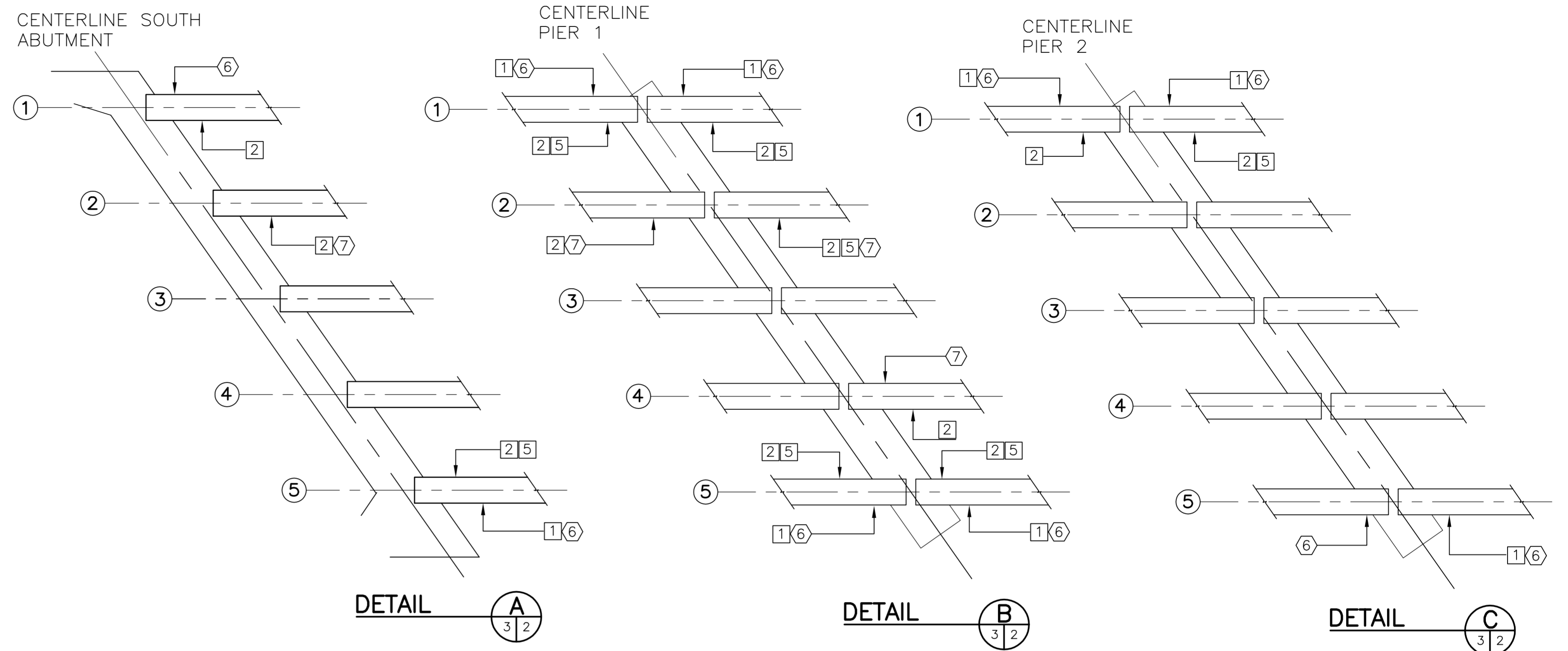


NOTES:

- REFER TO SHEETS 5, 6 AND 7 FOR GIRDER CONCRETE REPAIRS AND END METALLIZING DETAILS
- CONCRETE REPAIR MATERIAL TO CONFORM TO EXPOSURE CLASS C-1, COMPRESSIVE STRENGTH 35 MPA, AIR CONTENT CATEGORY 1

LEGEND:

- ① — INDICATES CENTER OF GIRDER LINE
- ① — INDICATES CONCRETE REPAIR TYPE LOCATIONS
- ⑥ — INDICATES GIRDER END METALLIZING TYPE LOCATIONS



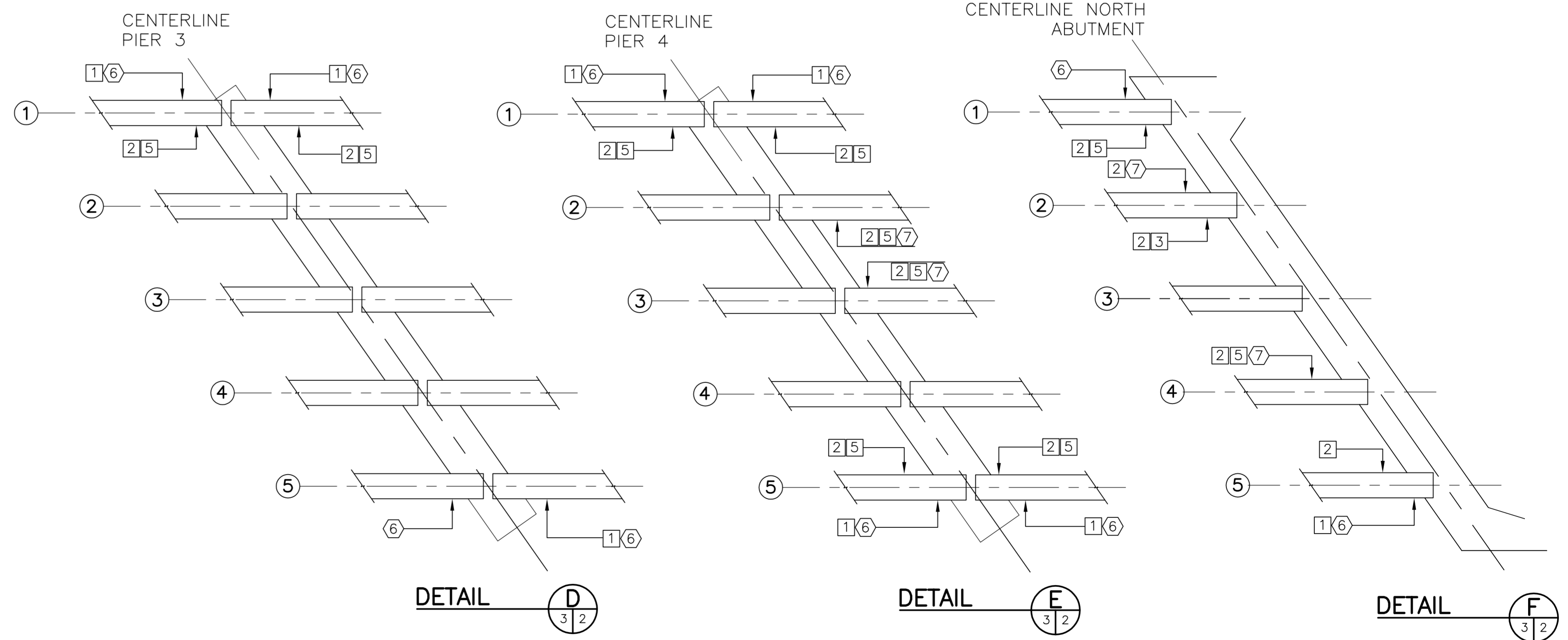
SCOPE OF WORK:

- ① TYPE 1: GIRDER END REPAIRS – EXTERIOR FACE OF EXTERIOR GIRDERS (16 LOCATIONS)
- ② TYPE 2: GIRDER END REPAIRS – INTERIOR FACE OF GIRDERS (25 LOCATIONS)
- ③ TYPE 3: GIRDER END REPAIRS – BOTTOM FLANGE OF GIRDERS AT GIRDER END (1 LOCATION)
- ④ TYPE 4: GIRDER REPAIRS – BOTTOM FLANGE NOT AT GIRDER END (NO LOCATIONS THIS SHEET)
- ⑤ TYPE 5: GIRDER END REPAIRS – END FACE OF GIRDERS (17 LOCATIONS)
- ⑥ TYPE 6: GIRDER END METALLIZING – EXTERIOR GIRDERS (20 LOCATIONS)
- ⑦ TYPE 7: GIRDER END METALLIZING – INTERIOR GIRDERS (8 LOCATIONS)

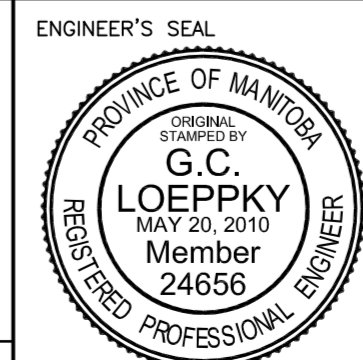
TABLE OF SOUTHBOUND CONCRETE REPAIR AREAS

DIRECTION	LOCATION			CONCRETE REPAIR TYPES	APPROX. AREA (m ²)
	PIER	SPAN	GIRDER LINE		
SB	S. ABUT.	1	1	2	0.14
			2	2	0.04
			5	1,2,5	0.24
SB	1	1	1	1,2,5	1.28
			2	2	0.05
			5	1,2,5	0.27
SB	1	2	1	1,2,5	0.56
			2	2,5	1.26
			4	2	0.07
SB	2	2	1	1,2	0.71
			5	1	0.03
			1	1,2,5	0.49
SB	2	3	1	1,2,5	0.49
			5	1	0.03
			1	1,2,5	0.76
SB	3	3	1	1,2,5	1.12
			5	1	0.05
			1	1,2,5	0.69
SB	3	4	1	1,2,5	0.69
			5	1,2,5	0.25
			1	1,2,5	0.81
SB	4	4	1	1,2,5	0.81
			2	2,5	0.19
			3	2,5	0.10
SB	4	5	1	1,2,5	0.62
			2	2,5	0.19
			3	2,5	0.10
SB	N. ABUT.	5	1	2,5	0.04
			2	2,2,3	0.23
			4	2,5	0.05
			5	1,2	0.20
			1	1,2,5	0.81

TOTAL AREA = 11.13



B.M. ELEV.	DESIGNED BY	GCL
	DRAWN BY	CDW
	CHECKED BY	
	APPROVED BY	
	HOR. SCALE	AS NOTED
	VERTICAL SCALE	AS NOTED
0 ISSUED FOR TENDER	05/20/10	MRD
NO. REVISIONS	DATE	BY



THE CITY OF WINNIPEG
PUBLIC WORKS DEPARTMENT

2010 CAPITAL PROGRAM
GIRDER REPAIRS AT ROUTE 20 KEEWATIN OVERPASS

CITY DRAWING NUMBER
B123-10-03

SHEET 3 OF 10

KEEWATIN OVERPASS SOUTHBOUND – GIRDER END REPAIRS – SCOPE OF WORK

BID OPPORTUNITY
421-2010