

NOTES:

- REFER TO SHEETS 5, 6 AND 7 FOR GIRDER CONCRETE REPAIRS AND END METALLIZING DETAILS
- CONCRETE REPAIR MATERIAL TO CONFORM TO EXPOSURE CLASS C-1, COMPRESSIVE STRENGTH 35 MPA, AIR CONTENT CATEGORY 1

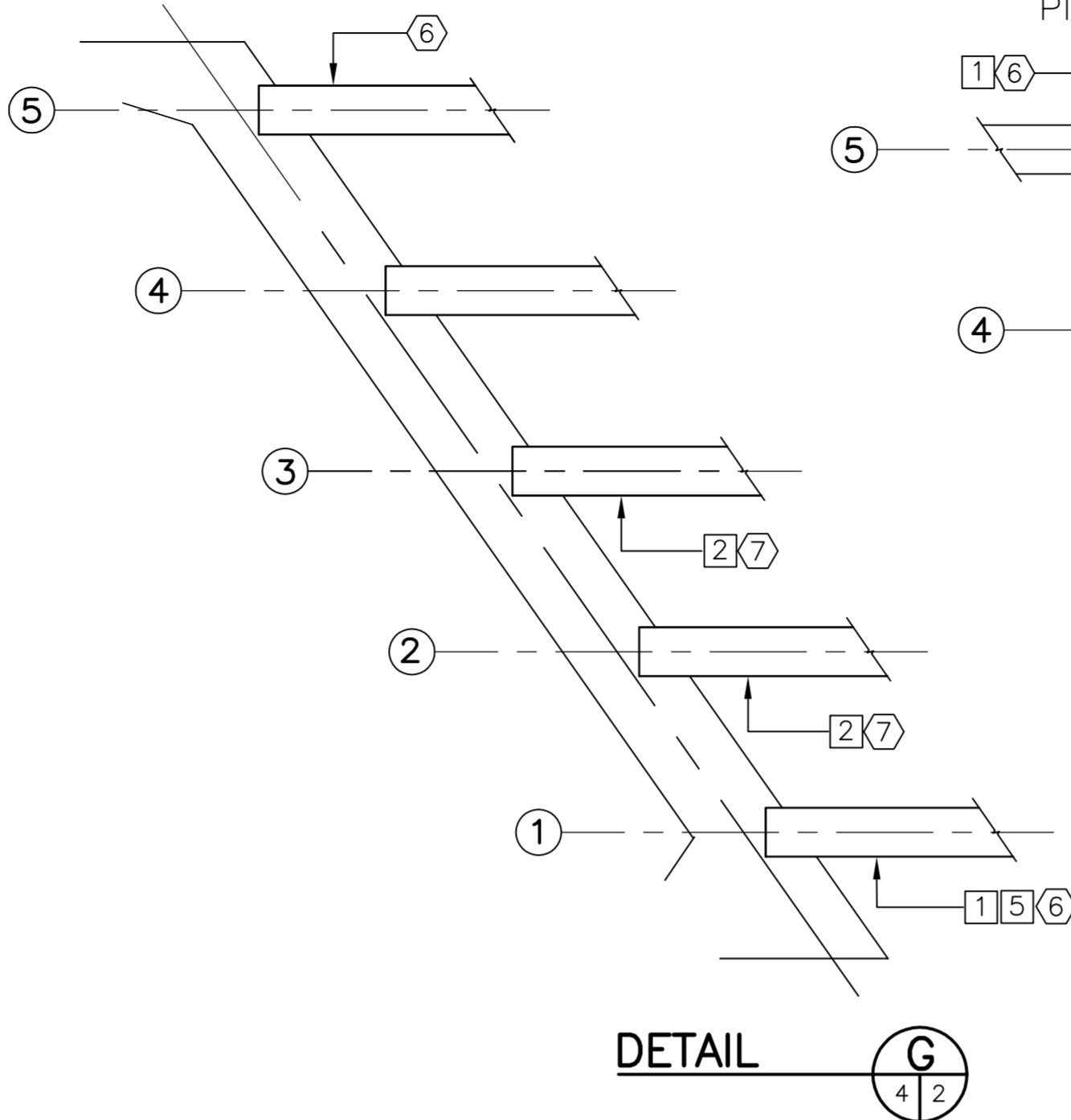
LEGEND:

- ① — INDICATES CENTER OF GIRDER LINE
- ① — INDICATES CONCRETE REPAIR TYPE LOCATIONS
- ⑥ — INDICATES GIRDER END METALLIZING TYPE LOCATIONS

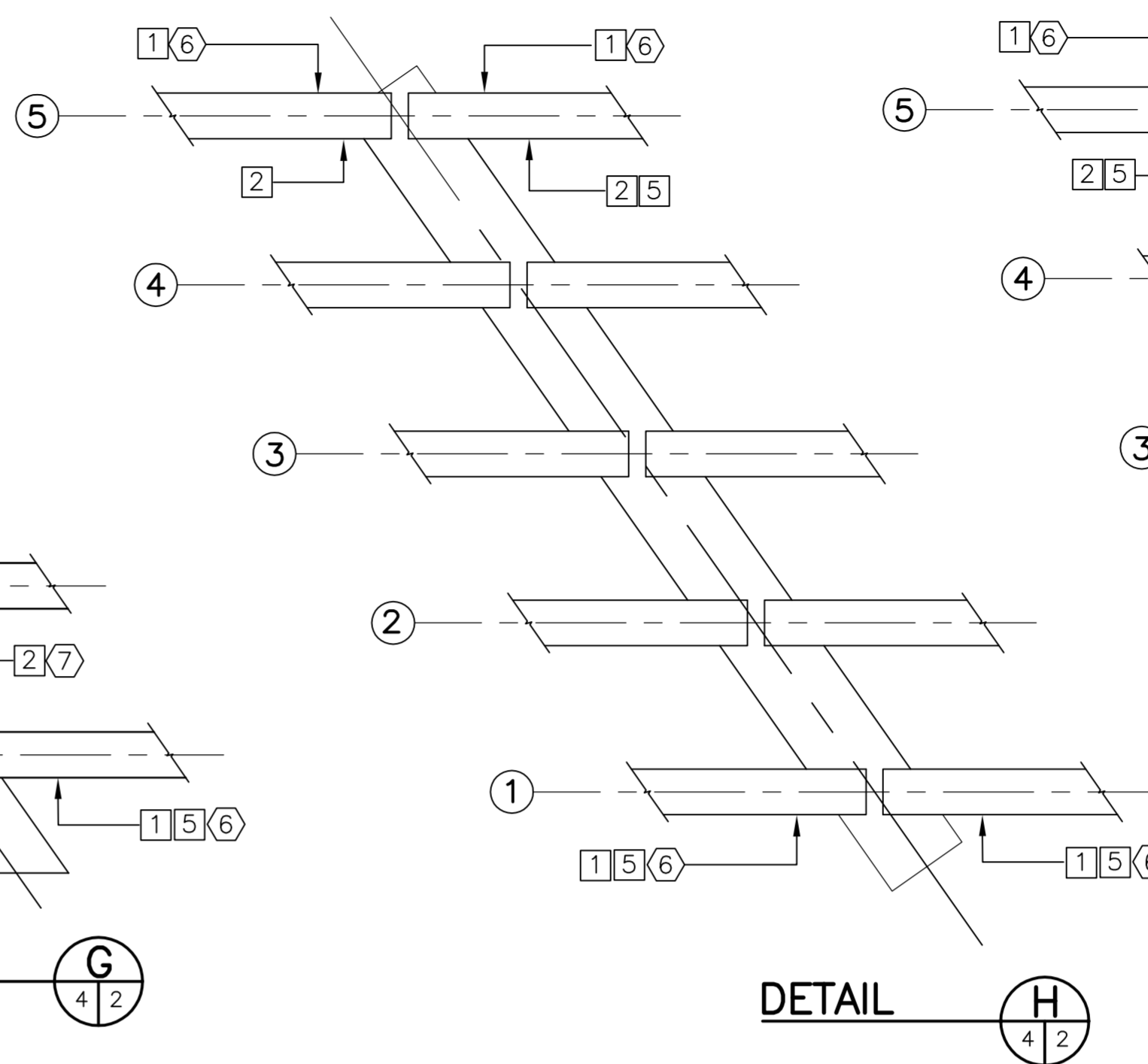
SCOPE OF WORK:

- ① TYPE 1: GIRDER END REPAIRS – EXTERIOR FACE OF EXTERIOR GIRDERS (17 LOCATIONS)
- ② TYPE 2: GIRDER END REPAIRS – INTERIOR FACE OF GIRDERS (8 LOCATIONS)
- ③ TYPE 3: GIRDER END REPAIRS – BOTTOM FLANGE OF GIRDERS AT GIRDER END (NO LOCATIONS THIS SHEET)
- ④ TYPE 4: GIRDER REPAIRS – BOTTOM FLANGE NOT AT GIRDER END (NO LOCATIONS THIS SHEET)
- ⑤ TYPE 5: GIRDER END REPAIRS – END FACE OF GIRDERS (11 LOCATIONS)
- ⑥ TYPE 6: GIRDER END METALLIZING – EXTERIOR GIRDERS (20 LOCATIONS)
- ⑦ TYPE 7: GIRDER END METALLIZING – INTERIOR GIRDERS (2 LOCATIONS)

CENTERLINE SOUTH ABUTMENT



CENTERLINE PIER 1



CENTERLINE PIER 2

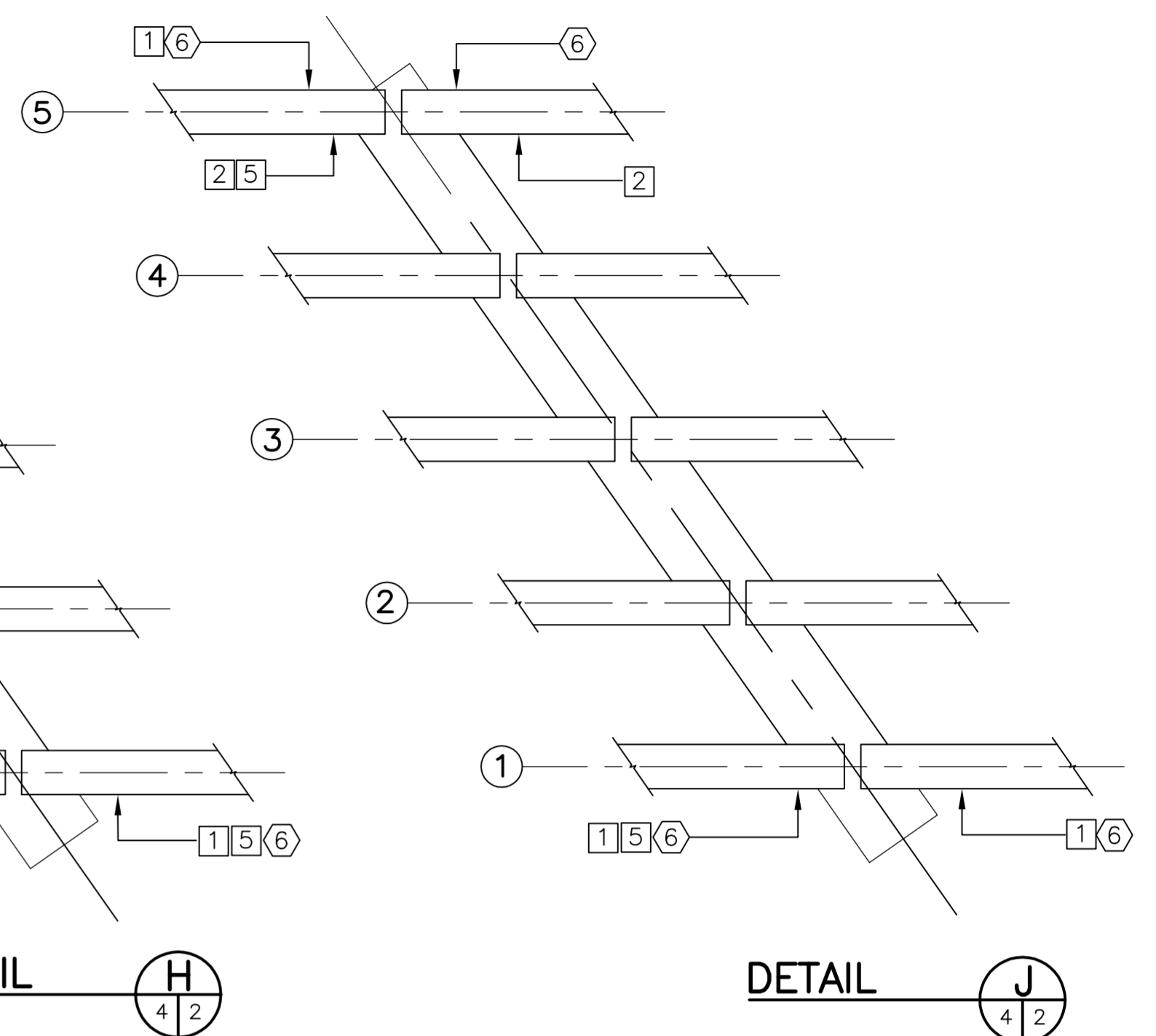
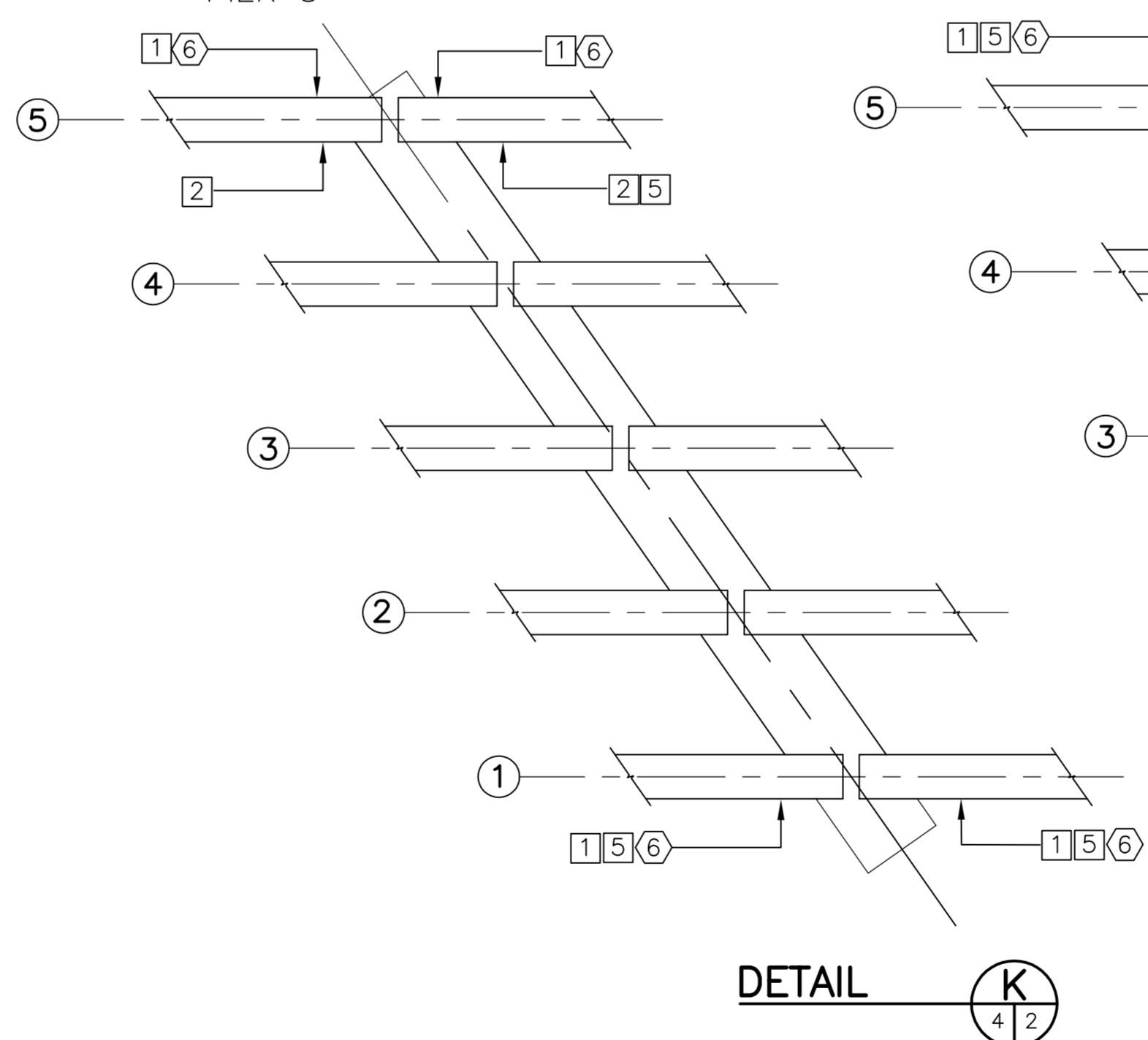


TABLE OF NORTHBOUND CONCRETE REPAIR AREAS

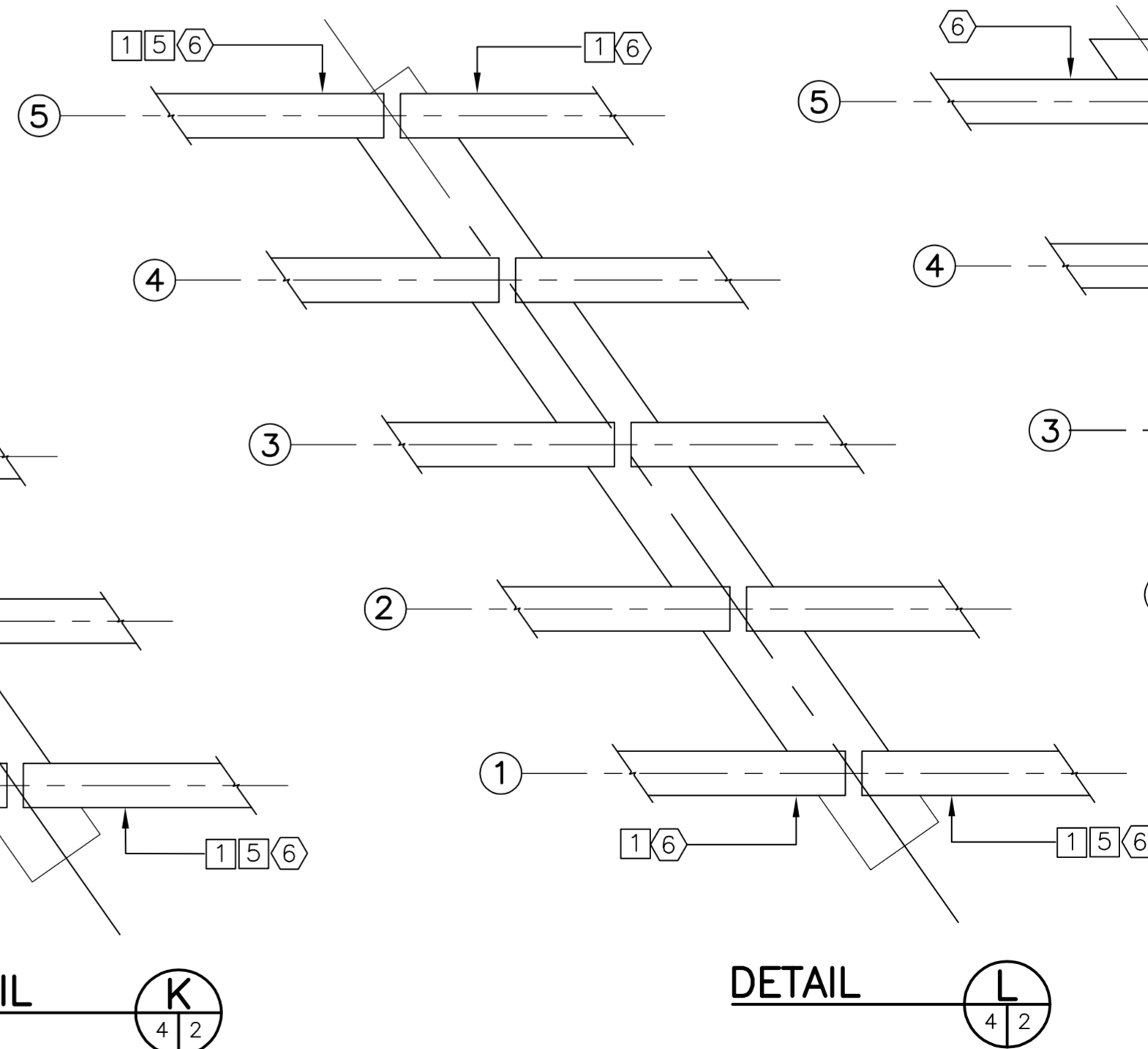
DIRECTION	LOCATION			CONCRETE REPAIR TYPES	APPROX. AREA (m ²)
	PIER	SPAN	GIRDER LINE		
NB	S. ABUT.	1	3	2	0.06
			2	2	0.04
			1	1,5	0.26
NB	1	1	5	1,2	0.10
			1	1,5	0.22
NB	1	2	5	1,2,5	0.39
			1	1,5	0.51
NB	2	2	5	1,2,5	0.18
			1	1,5	0.10
NB	2	3	5	2	0.27
			1	1	0.07
NB	3	3	5	1,2	0.31
			1	1,5	0.04
NB	3	4	5	1,2,5	0.81
			1	1,5	0.05
NB	4	4	5	1,5	0.35
			1	1	0.06
NB	4	5	5	1	0.13
			1	1,5	0.05
NB	N. ABUT.	5	1	1	0.09

TOTAL AREA = 4.10

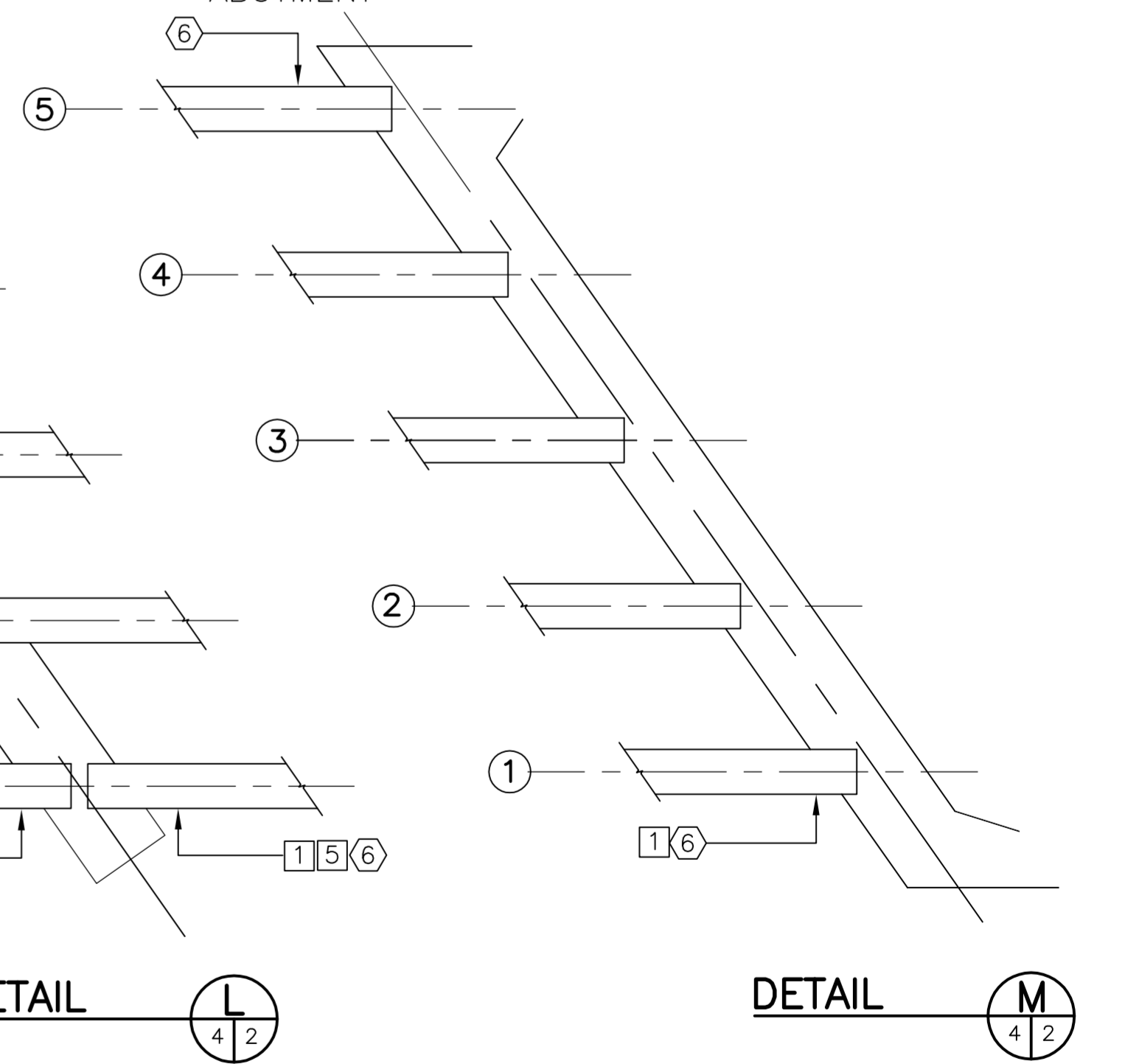
CENTERLINE PIER 3



CENTERLINE PIER 4



CENTERLINE NORTH ABUTMENT



40D:\Dillon_ACAD_FILES\CADD\103192\Contract\Current\Bids\Opp\3_4_CONCORDIA_ZOOMINS.dwg 4/27/2010



B.M. ELEV.	DESIGNED BY GCL		ENGINEER'S SEAL
	DRAWN BY CDW		
	CHECKED BY		
	APPROVED BY		
	HOR. SCALE	RELEASED FOR CONSTRUCTION	CONSULTANT PROJECT NO. 103192
	VERTICAL	ORIGINAL SIGNED BY B.A. NEIRINCK	
0 ISSUED FOR TENDER 05/20/10 MRD	DATE BY DATE MAY 2010	DATE MAY 20, 2010	
NO. REVISIONS			

THE CITY OF WINNIPEG PUBLIC WORKS DEPARTMENT

Winnipeg

2010 CAPITAL PROGRAM
GIRDER REPAIRS AT ROUTE 20 KEEWATIN OVERPASS

CITY DRAWING NUMBER B123-10-04
SHEET 4 OF 10

KEEWATIN OVERPASS NORTHBOUND – GIRDER END REPAIRS – SCOPE OF WORK

BID OPPORTUNITY 421-2010