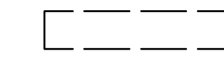
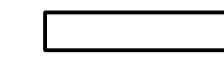

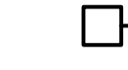


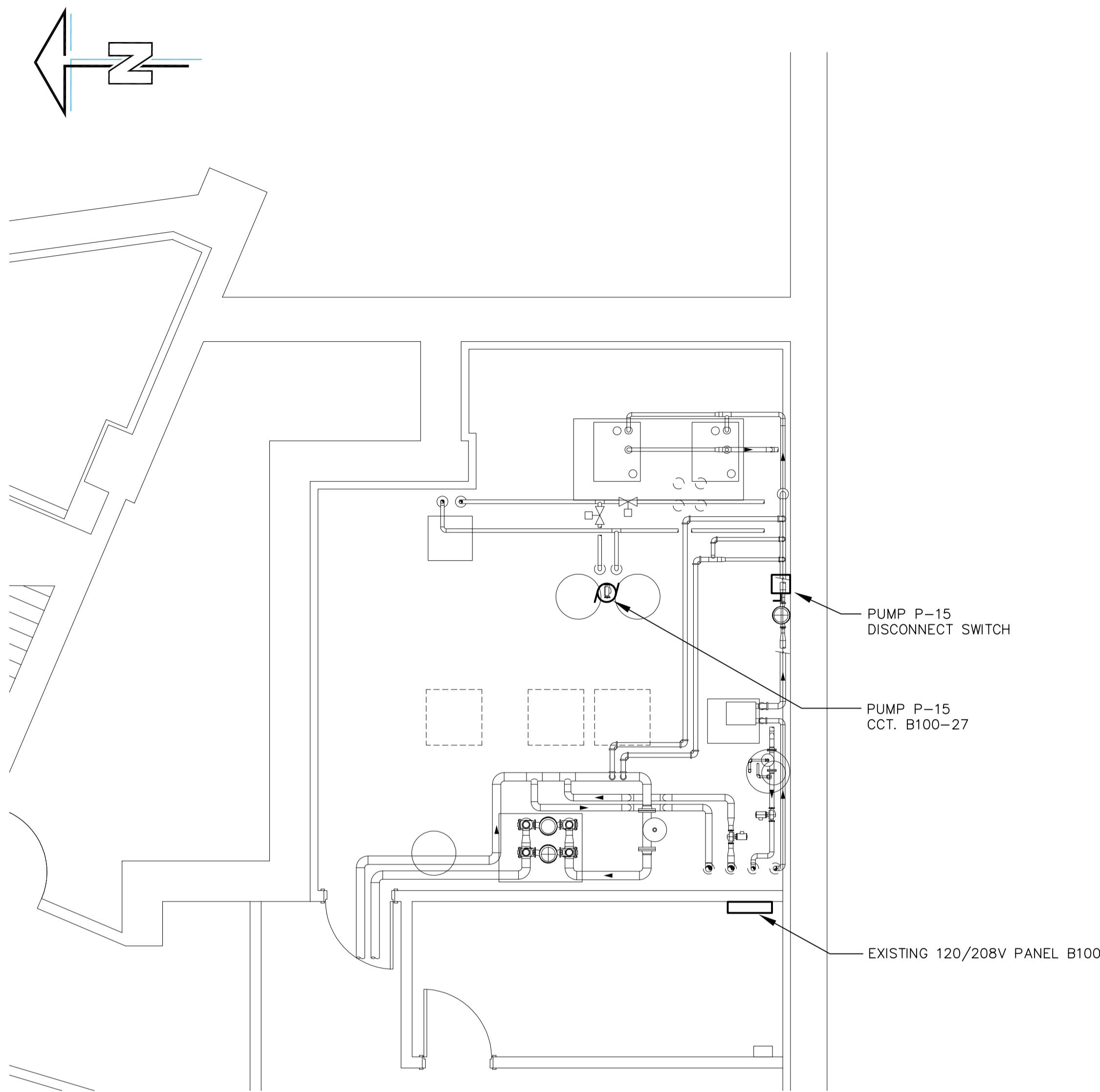


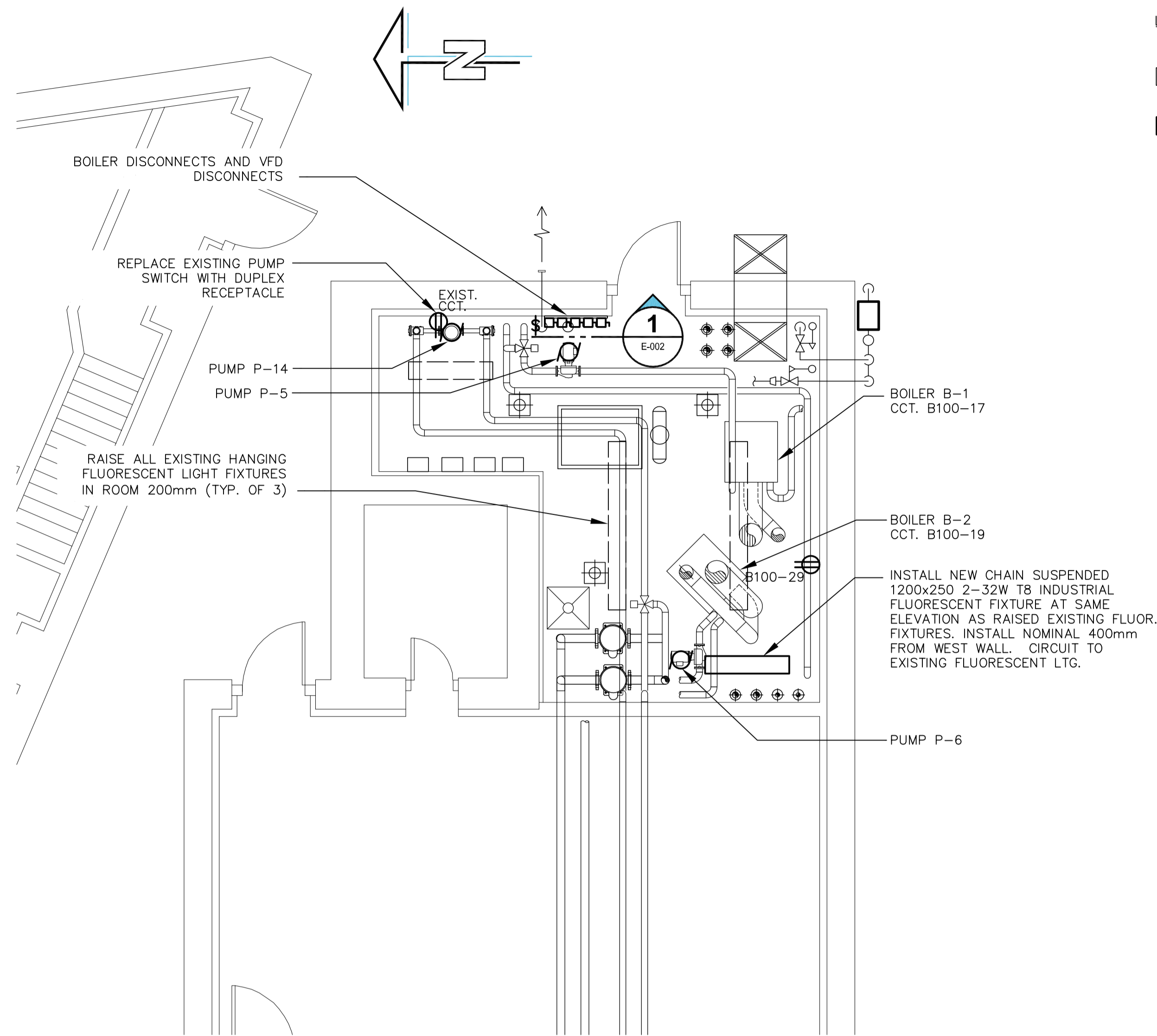
NOTES:

LEGEND

-  EXISTING FLOURESCENT LIGHT FIXTURE
-  NEW FLOURESCENT LIGHT FIXTURE
-  MOTOR LOCATION
-  DISCONNECT SWITCH
-  EQUIPMENT CONNECTION
-  JUNCTION BOX



1 BASEMENT PARTIAL PLAN
1:50



2 MAIN FLOOR PARTIAL PLAN
1:50



This drawing has been prepared for the use of AECOM's client and may not be used, reproduced or relied upon by third parties, except as agreed by AECOM and its client, as required by law or for use by governmental reviewing agencies. AECOM accepts no responsibility, and denies any liability whatsoever, to any party that modifies this drawing without AECOM's express written consent. Do not scale this document. All measurements must be obtained from stated dimensions.

No.	REVISION/DESCRIPTION	BY	DATE
0	ISSUED FOR TENDER	SS	10/07/12

DRAWN	CHK	DES	ENG	IDR			
DATE	2010.06.14	CHECKED	SS	DESIGNED	SS	APPROVED	—

THE CITY OF WINNIPEG
 PLANNING, PROPERTY AND
 DEVELOPMENT DEPARTMENT
 MUNICIPAL ACCOMMODATIONS DIVISION
 3-65 GARRY STREET, R3C 4K4

PROJECT
 CONFEDERATION BUILDING
 BOILER REPLACEMENT
 CITY PROJ. NO. 2010-023
 457 MAIN STREET, WINNIPEG, MANITOBA

SHEET TITLE
 ELECTRICAL
 FLOOR PLANS

DRN	CHK	DES	ENG	IDR

AECOM REVIEW

SCALE: 1:50 PROJECT No: 60154740 SHEET No: E-001