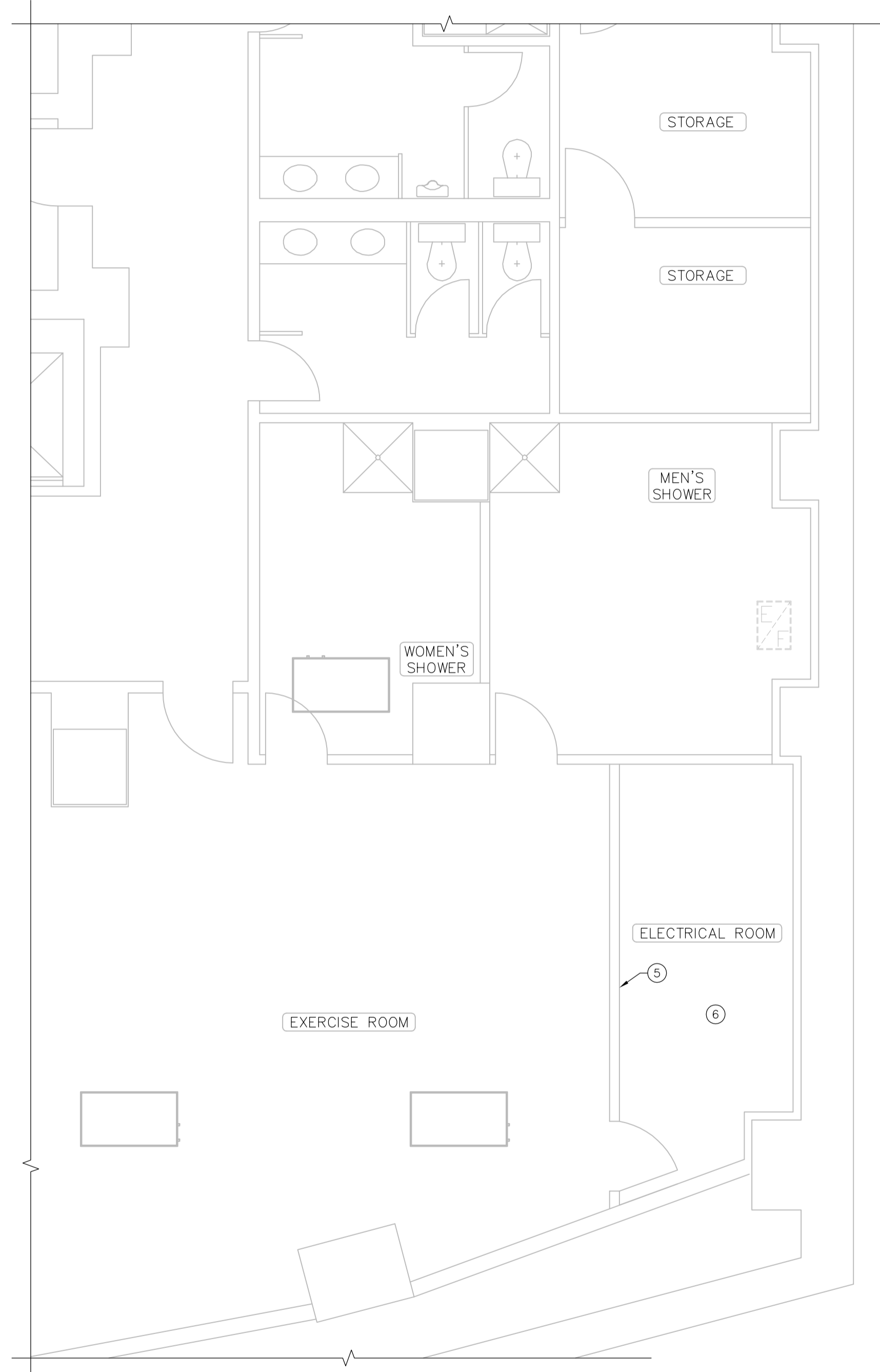
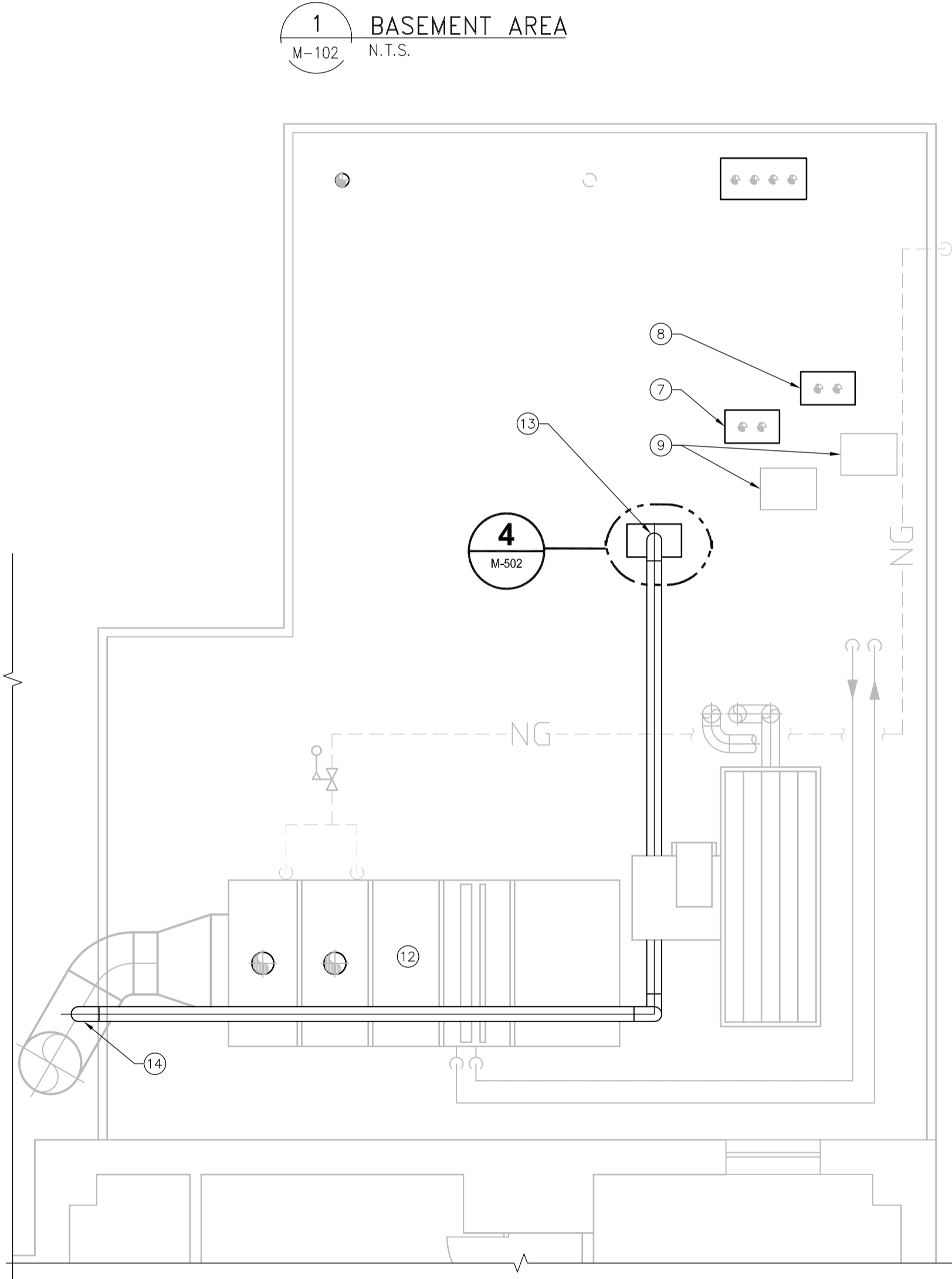


BASEMENT PART PLAN
SCALE: 1:50



BASEMENT PART PLAN
SCALE: 1:50



ROOF PLAN
SCALE: 1:50



1 BASEMENT AREA
M-102 N.T.S.

- CONSTRUCTION NOTES**
- ① 75ø HWS AND HWR PIPES FROM B-1 ABOVE.
 - ② 50ø HWS AND HWR PIPES TO EXISTING HX-1. SEE PHOTO ON M-103.
 - ③ RECONNECTED DCW PIPE, DHW PIPE, RECIRCULATION PIPE AND RECIRCULATION PUMP FROM GAS FIRED HOT WATER TANKS ABOVE.
 - ④ 600x600 1 1/2 ULC FIRE RATED BILCO ACCESS HATCH LOCATED NEAR NEW HWS AND HWR PIPE DROPS. PROVIDE ADEQUATE FRAMING AND SUPPORTS.
 - ⑤ INSTALL TEMPERATURE TRANSMITTER 2000 AFF WIRED BACK TO BMS TO SHOW ELECTRICAL ROOM TEMPERATURE.
 - ⑥ RECONNECT EXISTING FLEXIBLE DUCT TO EXISTING CEILING EXHAUST FAN IN ELECTRICAL ROOM.
 - ⑦ INTAKE AND EXHAUST VENTING FROM B-2.
 - ⑧ INTAKE AND EXHAUST VENTING FROM B-1.
 - ⑨ EXISTING ROOF CURBS.
 - ⑩ EXISTING DRYWALL CEILING IN BASEMENT MECHANICAL ROOM IS 3 LAYERS OF GYPSUM. 1.5 HR FIRE RATING MUST BE MAINTAINED OR REPAIRED FOR ALL PENETRATIONS AND OPENINGS.
 - ⑪ 50ø HWS AND HWR TO INDIRECT WATER HEATER. SEE SCHEMATIC ON M-502 FOR FINAL PIPING ARRANGEMENT.
 - ⑫ READJUST MUA VFD SPEED FROM 2900 LPS TO 3020 LPS. ENSURE MCV-HX-1 IS FULLY OPERATIONAL INJECTING HEAT INTO HX-1 BEFORE INCREASING SPEED.
 - ⑬ 150ø DUCT DOWN TO MECHANICAL ROOM BELOW.
 - ⑭ TAKE-OFF EXISTING MUA SUPPLY DUCT.

- GENERAL NOTES**
1. COORDINATE WITH OTHER TRADES SO AS TO PREVENT CONFLICTS.
 2. GENERAL CONTRACTOR SHALL COORDINATE WITH MECHANICAL CONTRACTOR ON FINAL HOUSEKEEPING PAD DIMENSIONS. PADS TO EXTEND 150mm BEYOND FINAL EQUIPMENT DIMENSIONS.



This drawing has been prepared for the use of AECOM's client and may not be used, reproduced or relied upon by third parties, except as agreed by AECOM and its client, as required by law or for use by governmental reviewing agencies. AECOM accepts no responsibility, and denies any liability whatsoever, to any party that modifies this drawing without AECOM's express written consent. Do not scale this document. All measurements must be obtained from stated dimensions.

No.	REVISION/DESCRIPTION	BY	DATE
0	ISSUED FOR TENDER	DJP	2010.07.02

DRWN	CHK	DES	DC	DESIGNED	DC	APPROVED	PVL

DATE: 2010.06.14
USER APPROVAL

THE CITY OF WINNIPEG
PLANNING, PROPERTY AND
DEVELOPMENT DEPARTMENT
MUNICIPAL ACCOMMODATIONS DIVISION
3-65 GARRY STREET, R3C 4K4

PROJECT
**CONFEDERATION BUILDING
BOILER REPLACEMENT
CITY PROJ. NO. 2010-023**
457 MAIN STREET, WINNIPEG, MANITOBA

SHEET TITLE
**MECHANICAL
BASEMENT AND ROOF PLANS**

DRN	CHK	DES	ENG	IDR

AECOM REVIEW

SCALE: AS NOTED PROJECT No: 60154740 SHEET No: **M-103**