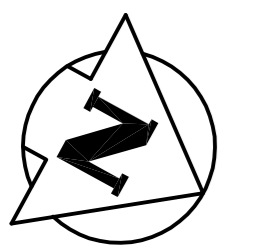
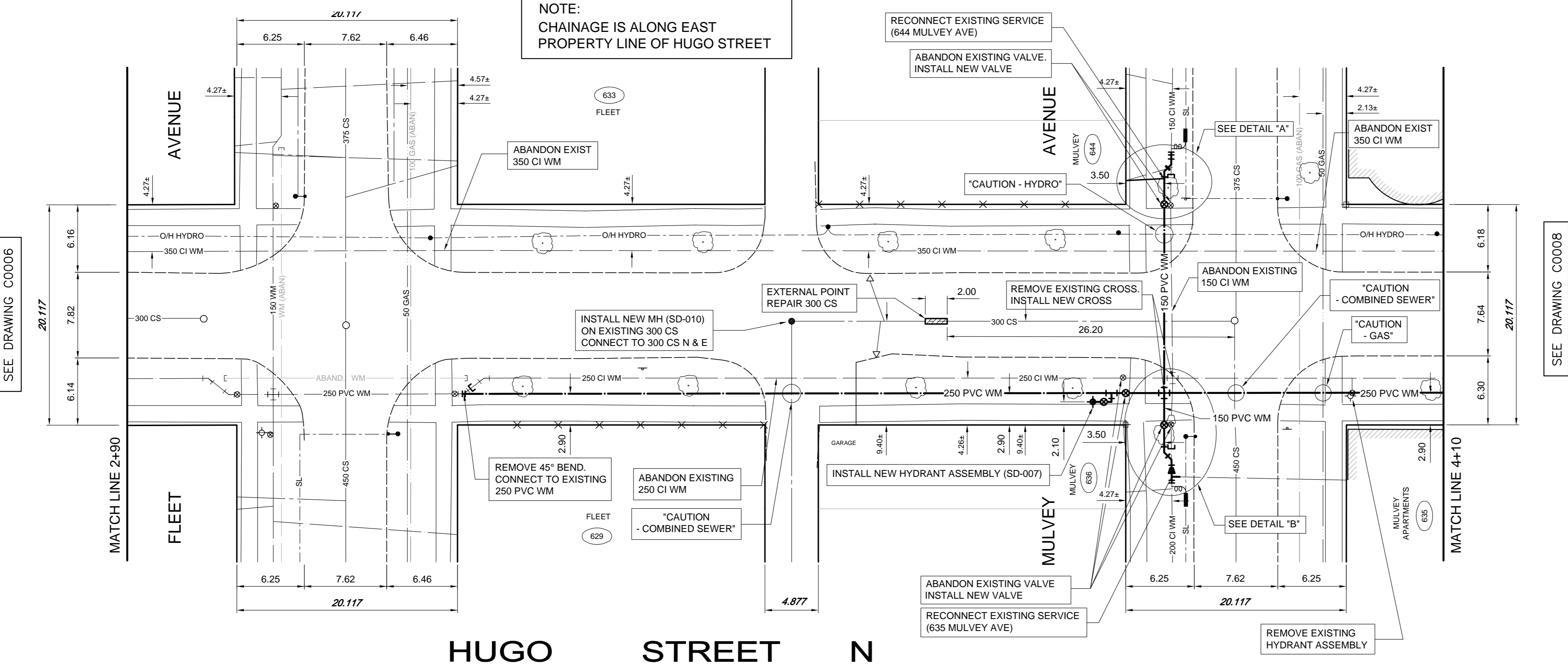


- NOTE:**
HUGO STREET, FROM FLEET AVE TO WARSAW AVE, IS PART OF 2010 PAVEMENT RENEWAL PROJECT. FINAL SURFACE RESTORATION OF ROADS, BOULEVARDS, AND SIDEWALKS EXCAVATED FOR WATERMAIN AND SEWER RENEWAL CONSTRUCTION IN THIS PORTION OF HUGO STREET WILL BE CARRIED OUT BY THE PAVEMENT RENEWAL CONTRACTOR.
- CONSTRUCTION NOTES**
1. WATERMAIN TO HAVE 2.5m COVER FROM CENTRELINE OF ROAD.
 2. ALL CURB REPLACEMENT TO MATCH EXISTING CURB.
 3. ALL EXISTING WATERMANS AT CONNECTION LOCATIONS ARE TO HAVE INVERTS VERIFIED PRIOR TO CONSTRUCTION.
 4. INSTALL ALL HYDRANTS WITH FLANGE ELEVATION FROM 50mm TO 150mm ABOVE FINISHED GRADE.
 5. SALVAGE ALL EXISTING HYDRANT ASSEMBLIES AND VALVES WHEN DIRECTED BY THE CONTRACT ADMINISTRATOR AND RETURN TO THE CITY YARD. ABANDON THE REMAINING VALVES (AND/OR VALVE BOXES) AND HYDRANT ASSEMBLIES.
 6. INSTALL WATERMAIN BY TRENCHLESS METHODS UNDER ALL PAVEMENTS, TREES, LIGHT STANDARDS, AND OTHER APPURTENANCES.
 7. RENEW ALL LEAD WATER CONNECTIONS UP TO THE PROPERTY LINE WITH 20mm COPPER WATER CONNECTIONS UNLESS RENEWAL SIZE IS OTHERWISE NOTED.
 8. ALL VALVES SHALL TURN COUNTER CLOCKWISE TO CLOSE WITH RED OPERATING NUT.
 9. ALL BACKFILL UNDER PAVEMENT SHALL BE CLASS 3.
 10. ALL BACKFILL UNDER BOULEVARD SHALL BE CLASS 5.
 11. ABANDON SERVICES NO LONGER IN USE WHERE DIRECTED BY CONTRACT ADMINISTRATOR.
 12. CONTRACTOR TO NOTIFY BUSINESSES AND RESIDENTS A MINIMUM OF 24 HOURS PRIOR TO ANY DISRUPTION TO WATER SERVICE.



NOTE:
CHAINAGE IS ALONG EAST PROPERTY LINE OF HUGO STREET



HUGO STREET N

150 WM	WATERMAIN	---	⊕	TEE	⊕	15.240	TREE	⊕
400 FM	FEEDERMAIN	---	♂	CURB STOP	♂		LEGAL DIMENSION	---
300 LDS	LAND DRAINAGE SEWER	---	⊔	PLUG	⊕		SURVEY BAR	---
250 WWS	WASTEWATER SEWER	---	⊔	MANHOLE	⊕		TRAFFIC SIGNAL	---
300 CS	COMBINED SEWER	---	⊔	CATCHBASIN	⊕		GAS	---
200 FCM	FORCEMAIN	---	▽	CURB INLET	⊕		HYDRO	---
⊔	REDUCER	---	▽	ZINC ANODE	⊕		ASPHALT	---
⊕	HYDRANT	---	⊕	HYDRO POLE	⊕		CURB	---
⊕	VALVE	---	⊕	LIGHT STANDARD	⊕		ADDRESS	---
⊔	BEND	---	⊕	ANCHOR	⊕		SIGN	---
---	EXISTING	---	---	---	---		---	---
---	LEGEND-PLAN	---	---	---	---		---	---

LOCATION APPROVED UNDERGROUND STRUCTURES

SUPV. U/G STRUCTURES COMMITTEE DATE

NOTE:
LOCATION OF UNDERGROUND STRUCTURES AS SHOWN ARE BASED ON THE BEST INFORMATION AVAILABLE. BUT NO GUARANTEE IS GIVEN THAT THE GIVEN LOCATIONS ARE EXACT. CONFIRMATION OF EXISTENCE AND EXACT LOCATION OF ALL SERVICES MUST BE OBTAINED FROM THE INDIVIDUAL UTILITIES BEFORE PROCEEDING WITH CONSTRUCTION.

B.M. ELEV.			
DESIGNED BY	GWC	CHECKED BY	BLM
DRAWN BY	NL	APPROVED BY	GS
01 ISSUED FOR TENDER	10.05.14	GS	
00 ISSUED FOR APPROVAL	10.05.13	BLM	
NO. REVISIONS	DATE	BY	DATE
	10.03.23		

WARDROP PEOPLE, PASSION, PERFORMANCE. TRUSTED GLOBALLY

DESIGNED BY GWC CHECKED BY BLM
DRAWN BY NL APPROVED BY GS

HOR. SCALE: 1 : 250
VERTICAL: 1 : 50

RELEASED FOR CONSTRUCTION

CONSULTANT DRAWING NO. 1000120100-DWG-C0007-01

THE CITY OF WINNIPEG
WATER AND WASTE DEPARTMENT

2010 - WATERMAIN RENEWALS AND SEWER REHABILITATION CONTRACT 11

HUGO STREET N
10m SOUTH OF FLEET AVENUE
TO 9m NORTH OF MULVEY AVENUE

CITY DRAWING NUMBER D-12030
SHEET 7 OF 10

ORIGINAL DRAWING REVISION "00" SEALED BY B.L. MCINTOSH, P. ENG. 2010.05.13

CONTRACTOR: APEGM Certificate of Authorization Wardrop Engineering Inc. No. 195 Expiry: April 30, 2011