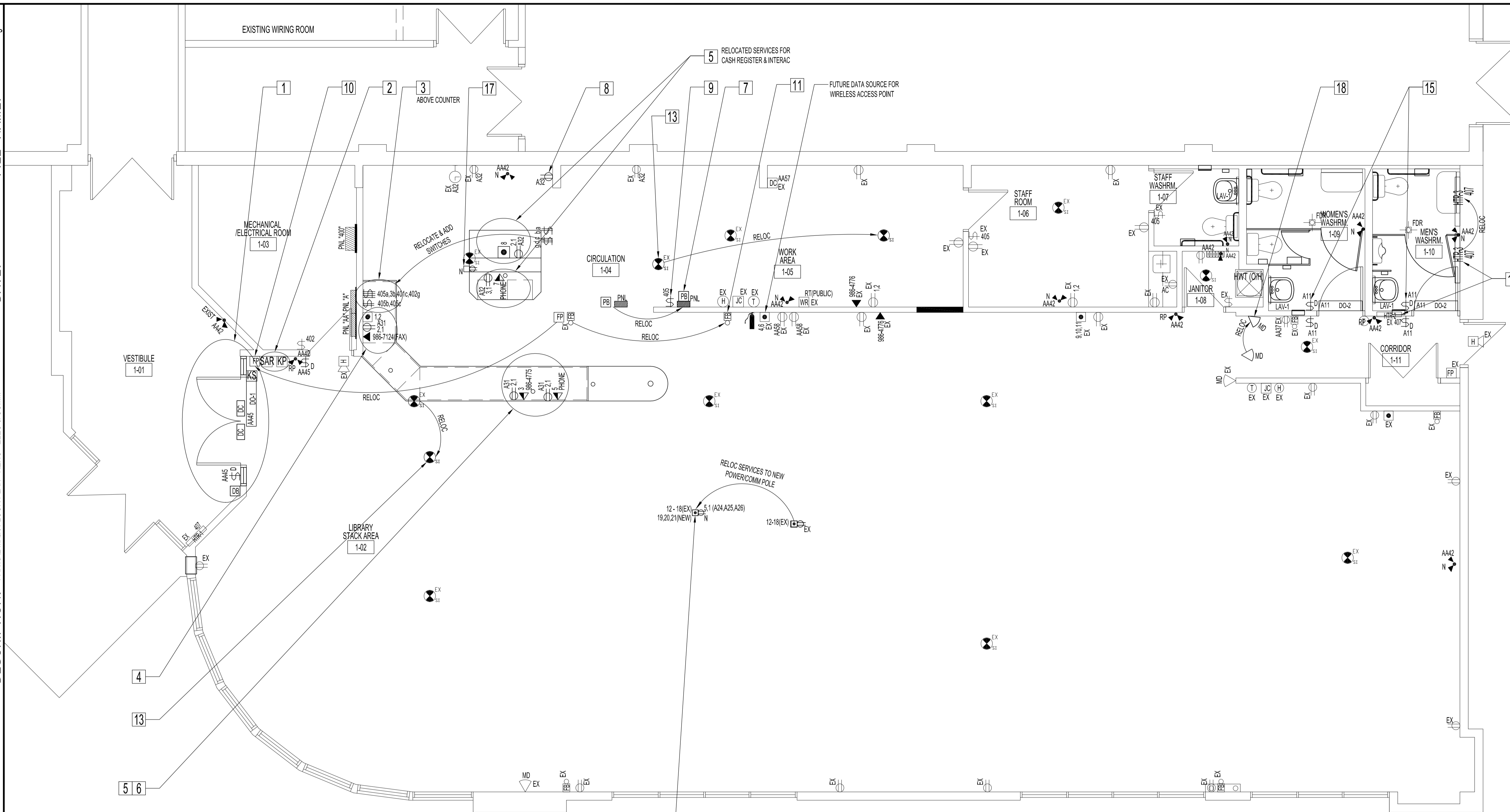


NOTES :

SEE NOTES ON SHEET E1.



**PARTIAL MAIN FLOOR PLAN - ELECTRICAL & COMMUNICATION RENOVATION**  
 SCALE: 1/4"=1'-0"

**ELECTRICAL & COMMUNICATION RENOVATION NOTES:**  
 ALSO SEE NOTES & SPECIFICATIONS.

- 1 SUPPLY & INSTALL NEW ENTRANCE DOOR (SEE DOOR SCHEDULE IN ARCHITECTURAL DRAWINGS) & REUSE EXISTING FIRE DOOR OPERATOR WITH AUTOMATIC CLOSER ASSEMBLY. NOTE: THERE ARE TWO (2) NEW FLUSH WALL MOUNTED ACTUATORS ON EACH SIDE OF THE WALL. RECONNECT EXISTING ASSOCIATED CIRCUITS & LABEL CIRCUITS. REINSTALL EXISTING POWER DOOR KEY SWITCH TO NEW DOOR JAMB AT 36" ABOVE FINISH FLOOR. REINSTALL SECURITY WIRING WITH NEW MAGNETIC FLUSH DOOR CONTACTS. REINSTALL DOOR BUZZER WIRING WITH NEW DOOR BUZZER PUSHBUTTON ON WALL ADJACENT TO NEW DOOR OR DOOR JAMB 36" FROM FINISH FLOOR. ALL WIRING TO BE CONCEALED INSIDE DOOR JAMBS AND/OR WALLS.
- 2 RELOCATE EXISTING SECURITY KEY SWITCH WIRING INSIDE WALL CAVITY. SUPPLY & INSTALL NEW DEVICE BOX WITH STAINLESS STEEL FACE PLATE TO ACHIEVE A CLEAN FLUSH WALL MOUNT SAME HEIGHT AS EXISTING SECURITY KEYPAD.
- 3 RELOCATED FROM CIRCULATION RM. 1-04, NORTH WALL. REWIRE, SUPPLY & INSTALL NEW (2) GANG ELECTRICAL SWITCH (LABELED WITH ROOM NAME "CIRC" & "CIRC SPOT") & NEW (4) GANG ELECTRICAL SWITCH (LABELED WITH ROOM NAME "WASHRM", "NORTH", "STACK" & "VESTIBULE"). MOUNT 20" ABOVE FINISHED COUNTERTOP & 20" FROM EXTERIOR CORNER. SEE ARCHITECTURAL DRAWING A5.
- 4 RELOCATED FAX LINE FROM OLD CIRCULATION RM. 1-04, DESK (SITE VERIFY). SUPPLY & INSTALL TWO (2) SINGLE DUPLEXES ISOLATED GROUND ELECTRICAL RECEPTACLE. RELOCATE EXISTING DATA PORTS 1 & 2 - ALL TO BE INSTALLED BELOW COUNTER, UNLESS OTHERWISE NOTED. SEE ARCHITECTURAL DRAWING A5.
- 5 SUPPLY & INSTALL DATA, PHONE & THREE (3) SINGLE DUPLEXES &/OR TWO (2) SINGLE DUPLEXES ISOLATED GROUND ELECTRICAL RECEPTACLES, AS INDICATED. ALL TO BE INSTALLED BELOW COUNTER. SEE ARCHITECTURAL DRAWING A5. NEW DATA PORT NUMBERS SHOWN ARE TO BE CONNECTED TO EXISTING PATCH PANEL IN EXISTING WIRING ROOM. SEE DATA CABLING SPECIFICATIONS.
- 6 RELOCATED DISTRESS ALARM BUTTON TO BE MOUNTED UNDERSIDE OF NEW COUNTER NEAR FRONT COUNTER EDGE.
- 7 RELOCATED BACK DOOR LOCAL ALARM PANEL & COMPONENTS 47" ABOVE FINISH FLOOR, AS SHOWN. RELOCATE ARM/DISARM PUSH BUTTON & INDICATOR LIGHTS ONTO ALARM PANEL DOOR (FLUSH MOUNT WITHOUT DEVICE BOX) WITH NECESSARY COMPONENTS. ADHERE A TYPED SEQUENCE OF OPERATION (FROM OLD) TO FRONT PANEL DOOR.
- 8 SUPPLY & INSTALL NEW ELECTRICAL RECEPTACLE 16" FROM FINISH FLOOR.
- 9 SUPPLY & INSTALL NEW LIGHT SWITCH 36" FROM FINISH FLOOR FOR LIGHTING CIRCUIT IN WORK AREA RM. 1-05. SEE ELECTRICAL LIGHTING DRAWING.
- 10 RELOCATED FIRE PULL STATION 47" FROM FINISH FLOOR.
- 11 RELOCATED FIRE BELL. INSTALL HEIGHT TO BE SAME AS OTHER EXISTING FIRE BELLS.

- 12 RELOCATE DATA & POWER TO NEW TELE-POWER POLE. PROVIDE ADDITIONAL 15 AMP CIRCUITS TO ENSURE THERE ARE A TOTAL OF THREE (3) 15 AMP CIRCUITS (ONE DEDICATED DUPLEX 15 AMP CIRCUIT LABELED "COPIER"). USE PANEL "A" CIRCUITS 24, 25 &/OR 26. IF NEW CIRCUITS ARE REQUIRED. ADD THREE (3) NEW DATA PORTS 19, 20 & 21. SEE DATA CABLING SPECIFICATIONS. THEREFORE TELE-POWER POLE HAVE FIVE (5) DUPLEXES & TEN (10) DATA PORTS. SITE VERIFY LOCATION WITH RESPECT TO NEW FURNITURE LAYOUT.
- 13 RELOCATED SMOKE DETECTOR. SUPPLY & INSTALL HARDWARE TYPE, IF REQUIRED.
- 14 RELOCATE EXISTING IN-WALL HEATER TO CLEAR NEW TOWEL DISPENSER BASEBOARD HEATER TO CLEAR OPENED DOOR AND NEW TOILET PARTITION.
- 15 SUPPLY & INSTALL AUTOMATIC DOOR OPERATOR WITH TWO (2) NEW FLUSH MOUNTED ACTUATORS ON EACH SIDE OF WALL. PROVIDE NEW 15 AMP CIRCUIT AS SHOWN.
- 16 RELOCATE EXISTING CAT5E DATA & RE-TEST. CABLING LENGTH SHOULD BE SUFFICIENT FOR RELOCATION. IF NOT, REWIRE NEW CAT5E CABLE POINT-TO-POINT WITHOUT SPLICES OR CONNECTORS. COORDINATE TELEPHONE RELOCATION WITH MTS ALLSTREAM.
- 17 SUPPLY & INSTALL NEW TELE-POWER POLE FOR WIRE PASS-THRU FROM CEILING TO NEW ISLAND COUNTER. SITE VERIFY LOCATION WITH RESPECT TO NEW FURNITURE LAYOUT.
- 18 RELOCATED SECURITY MOTION DETECTOR TO WALL.

**ELECTRICAL LEGEND**  
 (SUPPLY & INSTALL UNLESS OTHERWISE INDICATED)

TYPE	DESCRIPTION	TYPE	DESCRIPTION	TYPE	DESCRIPTION
⊕-xxx	LIGHT SWITCH, SINGLE	AC	ABOVE COUNTER	⊕-N	NEW TELE-POWER POLE W/BOX ENDED COMMUNICATIONS POLE (NO ELECTRICS). WIREMOLD NP600C-10-28
⊕-xxx	LIGHT SWITCH, TWO-GANG	EX	EXIST		
⊕-xxx	LIGHT SWITCH, FOUR-GANG	N	NEW (SUPPLY & INSTALL)		
xxxx ⊕	AUTOMATIC DOOR ACTUATOR SWITCH, 6" DIA NORTON 691, 630 FLUSH MOUNT	RP	REPLACE		
⊕-EX	POWER POLE W/DATA PORTS (EXIST)	MD	SECURITY MOTION DETECTOR (EXIST)		
⊕	DUPLEX RECEPTACLE	DC	SECURITY STEEL DOOR CONTACT, GE 1076CW		
⊕-1	EXIT LIGHT (EXIST)	KP	SECURITY KEYPAD (EXIST)		
⊕-2.1	2.1: INDICATES (2) SINGLE DUPLEX RECEPTACLE A31: INDICATES PANEL A, CIRCUIT 31	SAR	SECURITY CARD ACCESS READER (EXIST)		
DB	DOOR BUZZER BUTTON C/W STAINLESS STEEL FACEPLATE	KS	POWER DOOR KEY SWITCH (EXIST)		
DC	DOOR CHIME (EXIST)	WR <sup>RT</sup>	WIRELESS ROUTER (EXIST)		
DC-1	FIRE DOOR OPERATOR (EXIST)	⊕	SECURITY HORN (EXIST)		
DC-2	AUTOMATIC DOOR OPERATOR, NORTON 6910, 689 SET-UP FOR "PUSH AND GO"	⊕-DATA	PHONE PORT(S)		
⊕	CLOCK RECEPTACLE, 120V (EXIST)	⊕-DATA/PHONE	DATA/PHONE PORTS IN SINGLE DEVICE BOX. SUPPLY & INSTALL BLACK RJ-45 PHONE PORT IN SAME FACEPLATE WITH BLUE CAT5E DATA PORT.		
HTR	ELECTRIC IN-WALL HEATER (EXIST)	⊕	DATA PORT(S)		
⊕	FIRE ALARM BELL (EXIST)	⊕-N	NEW TELE-POWER POLE W/BOX ENDED & DATA PORTS. 5-DUPLEXES, 10 DATA PORTS, 10FT-2IN C/W (5) DUPLEX RECEPTACLES ON TOTAL (3) 15AMP CIRCUITS WITH (1) 15 AMP CIRCUIT ON A DEDICATED DUPLEX. CAT5E BLUE COMMUNICATION PORT (3 DECORA). WIREMOLD CUSTOM SPL-NP600-5-10-28		
⊕	FIRE ALARM MANUAL PULL STATION (EXIST)				
⊕	SMOKE DETECTOR				
WR <sup>RT</sup>	WIRELESS ROUTER (EXIST)				

1 DESIGN LEAD HAS CHANGED. DTA 2010 03.10

NO.	REVISION/DESCRIPTION	BY	DATE
1	DESIGN LEAD HAS CHANGED.	DTA	2010 03.10

DATE	CHECKED	DESIGNED	APPROVED
2010.03.10	USER	APPROVAL	

THE CITY OF WINNIPEG  
 PLANNING, PROPERTY AND  
 DEVELOPMENT DEPARTMENT  
 MUNICIPAL ACCOMMODATIONS DIVISION  
 3-65 GARRY STREET, R3C 4K4

PROJECT  
**FORT ROUGE LIBRARY**  
**INTERIOR UPGRADING**  
**NEW CIRCULATION DESK**  
 625 OSBORNE STREET

SHEET TITLE  
**PARTIAL MAIN FLOOR PLAN**  
**RENOVATION**  
**ELECTRICAL AND COMMUNICATION**

SCALE	PROJECT NO.	SHEET NO.
AS SHOWN	2008-019-01	E2R1