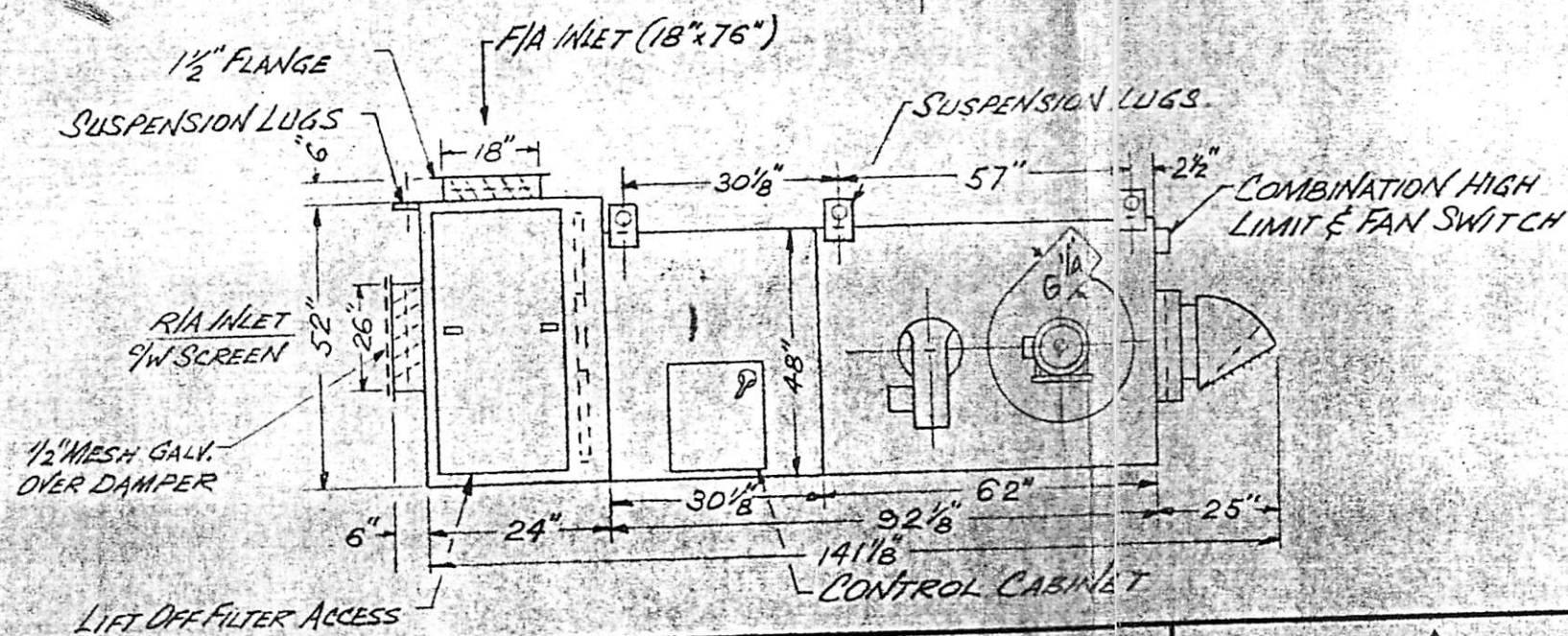
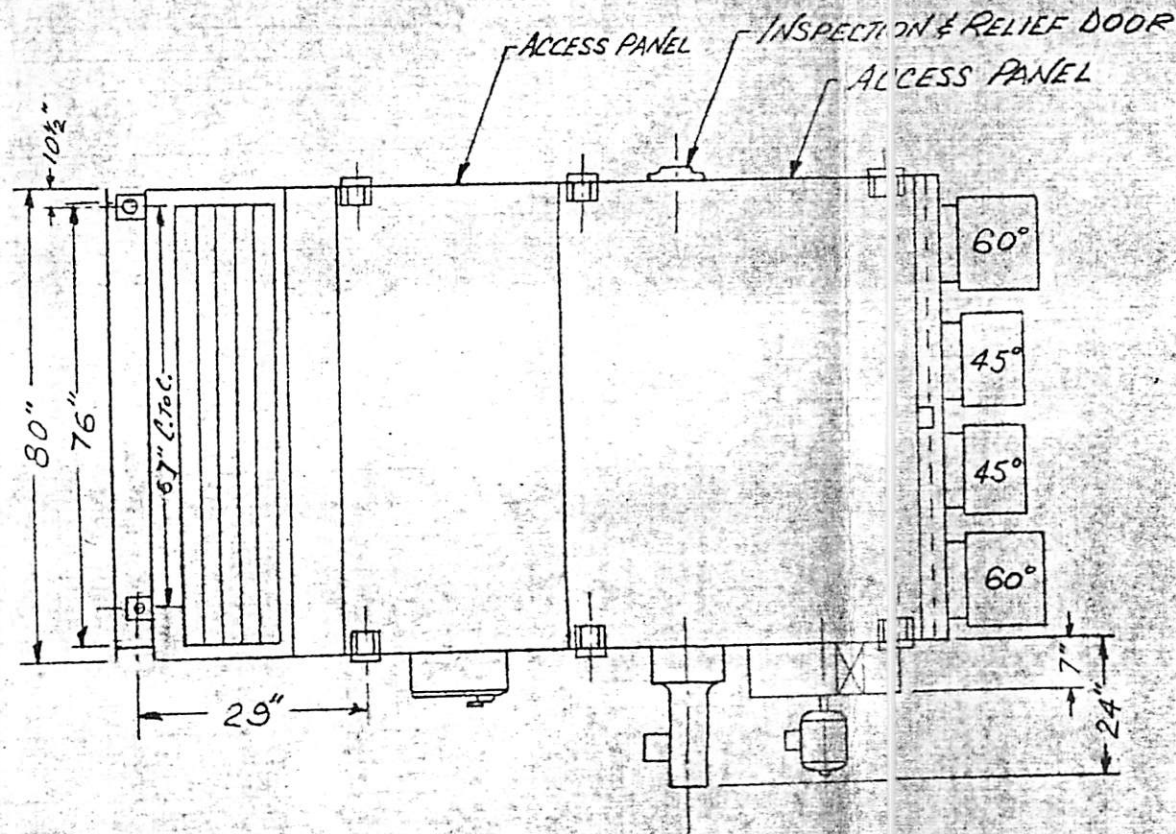


\*\* GARAGE BUILDING  
SYMBOL NO. 1  
INTERIOR UNITS



UNIT SPECIFICATIONS		
1	MODEL NUMBER	GTCM-100-CH
2	UNIT QUANTITY	FOUR
3	HAND	AS SHOWN
4	HEAT INPUT BTU/H	1,250,000
5	HEAT OUTPUT BTU/H	1,000,000
6	BURNER	MID CONTINENT LO-BLAST
7	FUEL	NATURAL GAS
8	FUEL PRESSURE	14" W.C.
9	TYPE OF FIRING	FULL MODULATION
10	TEMPERATURE RISE	---
11	TEMPERATURE CONTROL	T991A & T921A
12	UNIT PIPING DRAWING NO.	Q183P
13	SUPPLY FANS	2 - 18/18
14	AIR VOLUME-C.F.M.	10,690
15	EXTERNAL STATIC PRESSURE	5/8"
16	FAN SPEED-R.P.M.	770
17	RECOMMENDED STACK DIA.	10"
18	UNIT WEIGHT - LBS.	3100
19		
20		
ELECTRICAL SPECIFICATION		
21	LINE VOLTAGE	575/3/60 3 WIRE
22	CONTROL VOLTAGE	115/1/60
23	CONTROL TRANSFORMER	SUPPLIED
24	WIRING DIAGRAM NO.	H2081/W
25	CONTROL CABINET	MOUNTED
26	REMOTE STATION	CUSTOM DUCT TYPE
27	MAIN FAN MOTOR	5 H.P. OPEN
28	I.D. FAN MOTOR	1/2 H.P. OPEN
29	FLAME SUPERVISION	RA890E C/W ALARM CONTACTS
30		
31		
CONSTRUCTION		
32	TYPE OF MOUNTING	HORIZONTAL INDOOR
33	I.D. FAN DISCHARGE	AS SHOWN
34	INLET POSITION(S)	AS SHOWN
35	HEAT EXCHANGER	430 STAINLESS STEEL
36	SECONDARY TUBES	430 STAINLESS STEEL
37		
38		
ACCESSORY ITEMS		
39	DISCHARGE HEADS	2 @ 45° 2 @ 60°
40	DAMPERS	R/A & F/A AUTO; MOTORIZED
41	FILTERS	PERM. FRAMES DISPOSABLE MEDIA
42	VIBRATION DAMPENERS	NOT SUPPLIED
43	SERVICE PLATFORM	NOT SUPPLIED
44	PRESSURE REGULATOR(S)	APPLIANCE
45	INS. UNDERWRITER	C.U.A.
46		

NOTES:  
1. FILTER GAUGES SHIPPED UNMOUNTED  
2. DISCHARGE HEADS & PLENUMA SHIPPED SEPARATE

NO	REVISION	BY	DATE	CUSTOMER
1	FILTER MIXING BOX SUSP. LUGS RELOCATED	P.J.B.	6/2/68	SEMANS PLUMBING & HEATING LIMITED
				PROJECT WINNIPEG TRANSIT
				ORDER NO 14545
				UNIT NO. **

**THERMAL PRODUCTS**  
TEMPRITE INDUSTRIES LIMITED  
TORONTO - CANADA

TITLE		
NATIONAL CHAMPION HEATER MODEL GTDM-100-CH		
DRN. BY P.J.B.	DWG. NO. Q.1334	REV. /
APP. BY	JOB NO. NH8-1776-T/11-4	

SCALE N.T.S.  
DATE JUNE 11/68