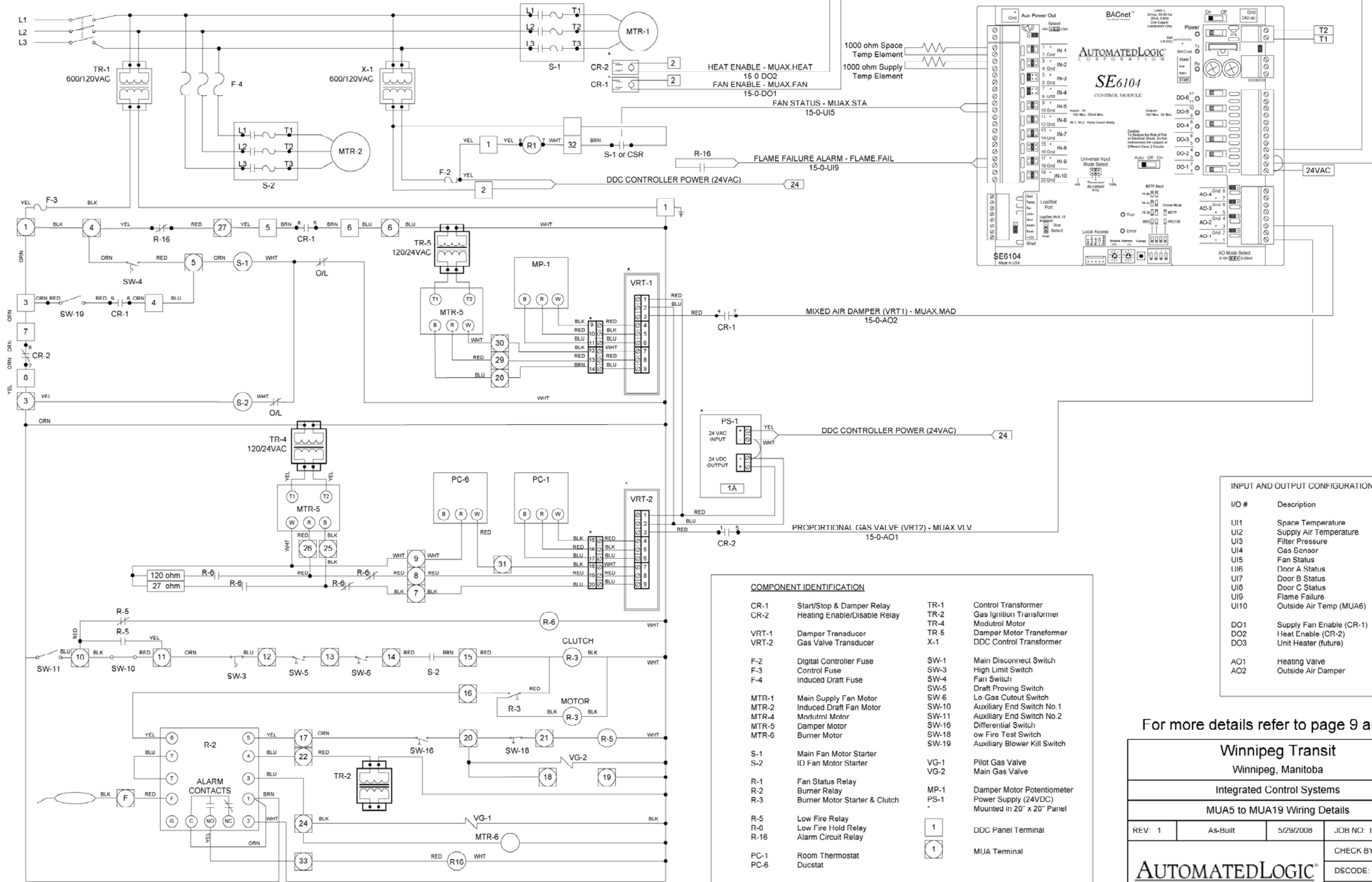


MUA5 to MUA19 Wiring Details



INPUT AND OUTPUT CONFIGURATION

I/O #	Description
UI1	Space Temperature
UI2	Supply Air Temperature
UI3	Filter Pressure
UI4	Gas Sensor
UI5	Fan Status
UI6	Door A Status
UI7	Door B Status
UI8	Door C Status
UI9	Flame Failure
UI10	Outside Air Temp (MUA6)
DO1	Supply Fan Enable (CR-1)
DO2	Heat Enable (CR-2)
DO3	Unit Heater (future)
AO1	Heating Valve
AO2	Outside Air Damper

COMPONENT IDENTIFICATION

CR-1	Start/Stop & Damper Relay	TR-1	Control Transformer
CR-2	Heating Enable/Disable Relay	TR-2	Gas Ignition Transformer
		TR-4	Modutrol Motor
VRT-1	Damper Transducer	TR-5	Damper Motor Transformer
VRT-2	Gas Valve Transducer	X-1	DDC Control Transformer
F-2	Digital Controller Fuse	SW-1	Main Disconnect Switch
F-3	Control Fuse	SW-3	High Limit Switch
F-4	Induced Draft Fuse	SW-4	Fan Switch
MTR-1	Main Supply Fan Motor	SW-5	Draft Proving Switch
MTR-2	Induced Draft Fan Motor	SW-6	Lo-Gas Cutout Switch
MTR-4	Modutrol Motor	SW-10	Auxiliary End Switch No.1
MTR-5	Damper Motor	SW-11	Auxiliary End Switch No.2
MTR-6	Burner Motor	SW-16	Differential Switch
		SW-18	ow Fire Test Switch
		SW-19	Auxiliary Blower Kill Switch
S-1	Main Fan Motor Starter	VG-1	Pilot Gas Valve
S-2	ID Fan Motor Starter	VG-2	Main Gas Valve
R-1	Fan Status Relay	MP-1	Damper Motor Potentiometer
R-2	Burner Relay	PS-1	Power Supply (24VDC)
R-3	Burner Motor Starter & Clutch		Mounted in 20" x 20" Panel
R-5	Low Fire Relay	1	DDC Panel Terminal
R-6	Low Fire Hold Relay	1	MUA Terminal
R-16	Alarm Circuit Relay		
PC-1	Room Thermostat		
PC-6	Ducstat		

For more details refer to page 9 and 11.

Winnipeg Transit
Winnipeg, Manitoba

Integrated Control Systems

MUA5 to MUA19 Wiring Details

REV: 1	As-Built	5/29/2008	JOB NO: ICS06-81
			CHECK BY: JJJ
			DSCODE:

AUTOMATEDLOGIC
CORPORATION

24 of 27