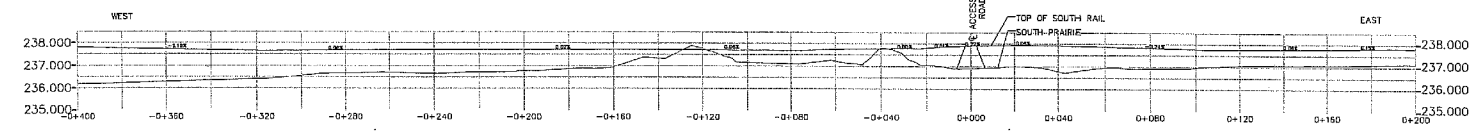
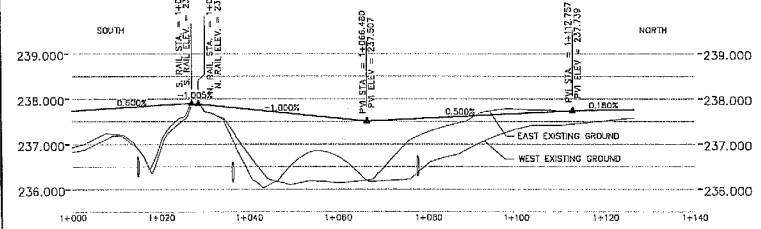


PLAN
SCALE 1:250

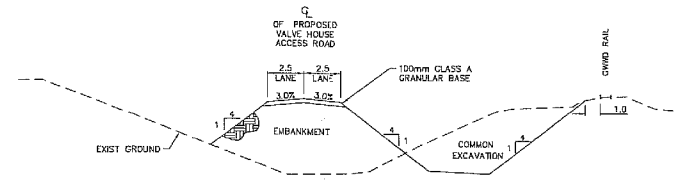


PROFILE - GWWD RAILWAY
SCALE: HOR. 1:1000 VERT. 1:100



PROFILE - CELL 2 ACCESS ROAD
SCALE: HOR. 1:500 VERT. 1:50

Released to the City of Winnipeg for Tendering Purposes
ORIGINAL SIGNED
Eric Christiansen P.Eng.
Director of Highway Planning & Design
Manitoba Transportation & Government Services
Date: MAY 15, 2006
M/GS Plan No. 7161



TYPICAL CROSS SECTION OF ACCESS ROAD IN THE VICINITY OF THE RAILWAY
SCALE: HOR. 1:150 VERT. 1:50

SYMBOL	DESCRIPTION	SYMBOL	DESCRIPTION	SYMBOL	DESCRIPTION	SYMBOL	DESCRIPTION	SYMBOL	DESCRIPTION
○	WATERMAIN	○	HYDRO	○	HYDRO	○	HYDRO	○	LIGHT STANDARD
○	HYDRANT	○	M.T.S.	○	ANCHOR	○	ANCHOR	○	ANCHOR
○	VALVE	○	CONCRETE	○	HYDRO POLE	○	HYDRO POLE	○	CONTOURS
○	LAND DRAINAGE SEWER	○	ASPHALT	○	PROPERTY LINE	○	PROPERTY LINE	○	RAIL X-ING SIGNAL
○	WASTEWATER SEWER	○	SURVEY BAR	○	ELEVATION	○	ELEVATION	○	RAILWAY TRACK
○	MANHOLE	○	TREE	○	GRANULAR	○	GRANULAR	○	SWITCH
○	CATCH BASIN	○	CULVERT	○	SLOPE	○	SLOPE	○	FENCE
○	CURB INLET	○	GAS	○	EXISTING	○	EXISTING	○	ROAD CLOSED
○	ANODE	○	PROPOSED	○	LEGEND - PLAN	○	LEGEND - PLAN	○	PROPOSED
○	CULVERT	○	EXISTING	○	PROPOSED	○	PROPOSED	○	EXISTING
○	GAS	○	LEGEND - PLAN	○	PROPOSED	○	PROPOSED	○	LEGEND - PLAN
○	EXISTING	○	LEGEND - PLAN	○	PROPOSED	○	PROPOSED	○	LEGEND - PLAN

APCON
Certificate of Authorization
Earth Tech Canada Inc.
No. 730 Expiry: April 30, 2007

NO.	ISSUED FOR TENDER	DATE	BY	DATE	BY
00	ISSUED FOR TENDER	06/05/16	FAP	2006/03/28	DATE
01	REVISED				

DESIGNED BY	CHECKED BY	DRAWN BY	APPROVED BY	SCALE	RELEASED FOR CONSTRUCTION BY
JC	JC	MW	AML	AS NOTED	R. SOROKOWSKI

ENGINEER'S SEAL
ORIGINAL SIGNED BY
JEFF CRANG
May 16, 2006

THE CITY OF WINNIPEG
WATER AND WASTE DEPARTMENT
ENGINEERING DIVISION
WINNIPEG WATER TREATMENT
PROGRAM - PROVINCIAL ROAD #207 UPGRADE
CIVIL
RAILWAY CROSSING PLAN - CELL 2 ACCESS ROAD

CITY FILE NUMBER
SHEET OF
CITY DRAWING NUMBER
1-0000-A-0075-00-000