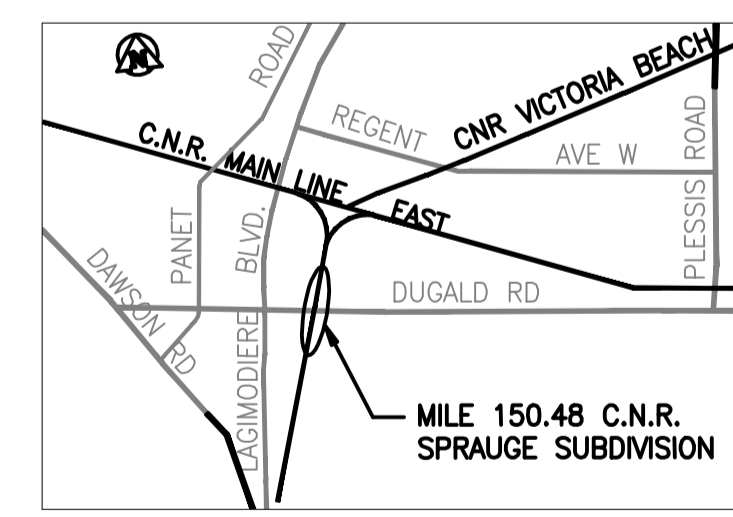
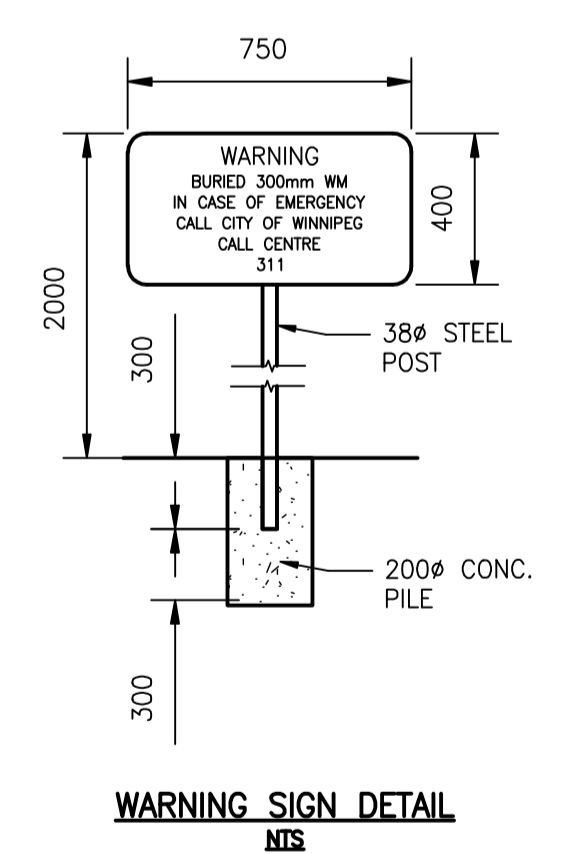
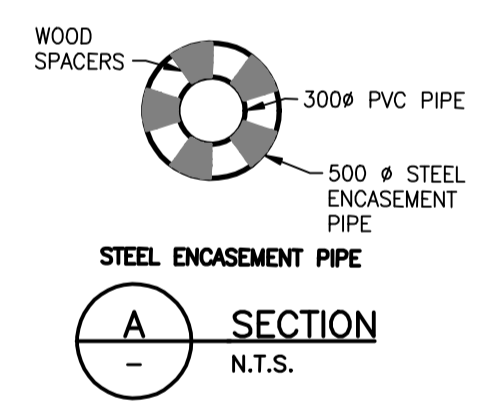
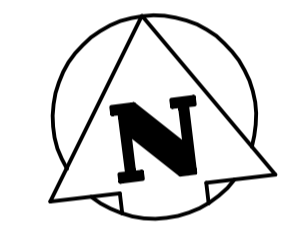
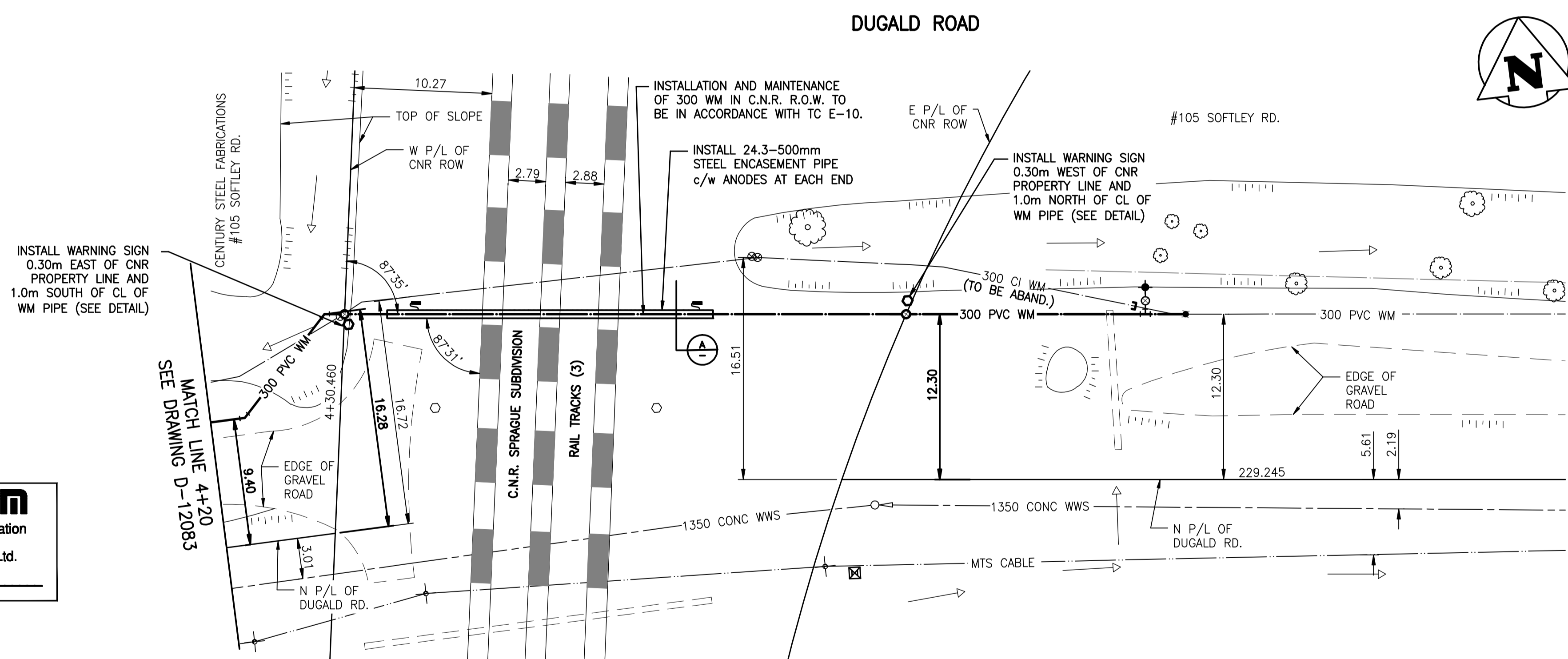


**OWNER CONTACT INFORMATION**  
 CITY OF WINNIPEG  
 WATER AND WASTE DEPARTMENT  
 KAS ZUREK, P. ENG.  
 DESIGN AND CONSTRUCTION ENGINEER  
 110 - 1199 PACIFIC AVENUE  
 WINNIPEG, MB  
 R3E 3S8  
 TEL:(204) 986-2025  
 FAX:(204) 986-5345

**NOTE:**  
 C/L OF PROPOSED 300 WM  
 CROSSING C/L OF MIDDLE TRACKS  
 TO EAST PROPERTY LINE OF  
 SOFTLEY RD.=170.4m

**WATER CARRIER PIPE INFO FOR C.N.R. CROSSING**  
 DIAMETER - 300mm  
 MATERIAL - PVC  
 WALL THICKNESS = 18.6mm  
 PIPE CLASS - AWWA C900 DR 18  
 SURGE PRESSURE = 300 PSI (2.0MPa)  
 OPERATING PRESSURE = 60 PSI (0.4 MPa)  
 TEST PRESSURE = 150 PSI (1.0MPa)  
 INSTALLATION METHOD - CORED  
**ENCASEMENT PIPE INFO**  
 DIAMETER - 500mm  
 MATERIAL - BLACK STEEL ASTM A35  
 WALL THICKNESS - 6.35mm  
 YIELD STRENGTH - 241 MPa

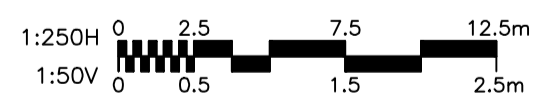
- NOTES:**
- CONTRACTOR TO EXPOSE EXISTING WATERMANS AT TIE IN'S AND CONFIRM INVERTS OF PIPE.
  - CONTRACTOR TO FOLLOW LATEST VERSION OF THE CITY OF WINNIPEG STANDARD CONSTRUCTION SPECIFICATION.
  - WATERMANS TO BE INSTALLED BY TRENCHLESS METHODS.
  - CLASS 3 BACKFILL TO BE USED WITHIN 1.0 METER OF PAVED SURFACES.
  - CONTRACTOR TO NOTIFY RESIDENTS AT LEAST 24 HOURS PRIOR TO ANY DISRUPTION OF WATER SERVICE.
  - OIL AND GAS RESISTANT GASKETS TO BE USED ON DUGALD ROAD RENEWAL.



**APEGM**  
 Certificate of Authorization  
 Stantec Consulting Ltd.  
 No. 1301 Date: \_\_\_\_\_

**METRIC**  
 WHOLE NUMBERS INDICATE MILLIMETRES  
 DECIMALIZED NUMBERS INDICATE METRES

**WARNING**  
 IF POWER EQUIPMENT OR EXPLOSIVES ARE TO BE USED FOR EXCAVATION ON THIS PROJECT THE CONTRACTOR MUST:  
 1) NOTIFY THE GAS COMPANY OF THE PROPOSED LOCATION OF EXCAVATION.  
 2) TAKE PRECAUTION TO AVOID DAMAGE TO GAS COMPANY INSTALLATIONS.  
 SEE PROVINCIAL REGULATION 140/92 FOR DETAILS



**BENCH MARK:** N. side Dugald Rd. Btw'n. Mozenod Rd. & Pleissis Rd., 19 mm dia. x 4.6 m I.B. in Valve Box in front of W. doorway to No. 1755 Dugald Rd.

**NOTE:**  
 STATIONS ALONG N P OF DUGALD RD.

BID OPPORTUNITY 457-2010

EXISTING	LEGEND-PLAN	PROPOSED	EXISTING	LEGEND-PLAN	PROPOSED	EXISTING	LEGEND-PROFILE	PROPOSED
150 WM	WATERMAIN	150 WM	HYDRO	M.T.S.	150 WM	WATERMAIN	HYDRANT, VALVE	150 WM
300 LDS	LAND DRAINAGE SEWER	300 LDS	CONCRETE	CONCRETE	300 LDS	LAND DRAINAGE SEWER	VALVE	300 LDS
250 WWS	WASTE WATER SEWER	250 WWS	ASPHALT	ASPHALT	250 WWS	WASTE WATER SEWER	WASTE WATER SEWER	250 WWS
MANHOLE	MANHOLE	MANHOLE	PROPERTY LINE	PROPERTY LINE	PROPERTY LINE	PROPERTY LINE	PROPERTY LINE	PROPERTY LINE
CATCH BASIN	CATCH BASIN	CATCH BASIN	SURVEY BAR	SURVEY BAR	SURVEY BAR	SURVEY BAR	SURVEY BAR	SURVEY BAR
CURB INLET	CURB INLET	CURB INLET	DITCH	DITCH	DITCH	DITCH	DITCH	DITCH
JUNCTIONS	JUNCTIONS	JUNCTIONS	CURB STOP	CURB STOP	CURB STOP	CURB STOP	CURB STOP	CURB STOP
STREET REHABILITATION LIMIT	STREET REHABILITATION LIMIT	STREET REHABILITATION LIMIT	TREE	TREE	TREE	TREE	TREE	TREE
GAS	GAS	GAS	FENCE	FENCE	FENCE	FENCE	FENCE	FENCE

**LOCATION APPROVED UNDERGROUND STRUCTURES**  
 SUPV. U/G STRUCTURES COMMITTEE DATE  
**NOTE:**  
 LOCATION OF UNDERGROUND STRUCTURES AS SHOWN ARE BASED ON THE BEST INFORMATION AVAILABLE BUT NO GUARANTEE IS GIVEN THAT ALL EXISTING UTILITIES ARE SHOWN OR THAT THE GIVEN LOCATIONS ARE EXACT. CONFIRMATION OF EXISTENCE AND EXACT LOCATION OF ALL SERVICES MUST BE OBTAINED FROM THE INDIVIDUAL UTILITIES BEFORE PROCEEDING WITH CONSTRUCTION.

B.M.	32-001	ELEV.	231.777m
NO.	REVISIONS	DATE	BY
1.	ISSUED FOR C.N.R. APPROVAL		

**Stantec Consulting Ltd.**  
 905 Waverley Street, Winnipeg, Manitoba  
 Tel 204-489-5900 Fax 204-453-9012

DESIGNED BY	J.K.H.	CHECKED BY	W.W.B.
DRAWN BY	J.K.H.	APPROVED BY	H.A.K.
HOR. SCALE:	1:250	RELEASED FOR CONSTRUCTION:	
VERTICAL:	1:50	DATE	10.04.15

ENGINEER'S SEAL  
**ORIGINAL SEALED BY**  
 H.A. KATZ  
 P. ENG.  
 10.08.09  
 CONSULTANT DRAWING NO.  
 C-207

**THE CITY OF WINNIPEG**  
 WATER AND WASTE DEPARTMENT  
 ENGINEERING DIVISION

**2010 WATERMAIN RENEWALS - CONTRACT 8**  
**DUGALD ROAD**  
 10.5 WWL CNR SPRAGUE SUBDIVISION ROW TO 20.8 EEL OF CNR SPRAGUE SUBDIVISION ROW

SHEET 7 OF 13  
 CAD FILE DRAWING NUMBER 12170c-204-735.dwg  
 CITY DRAWING NUMBER D-12084