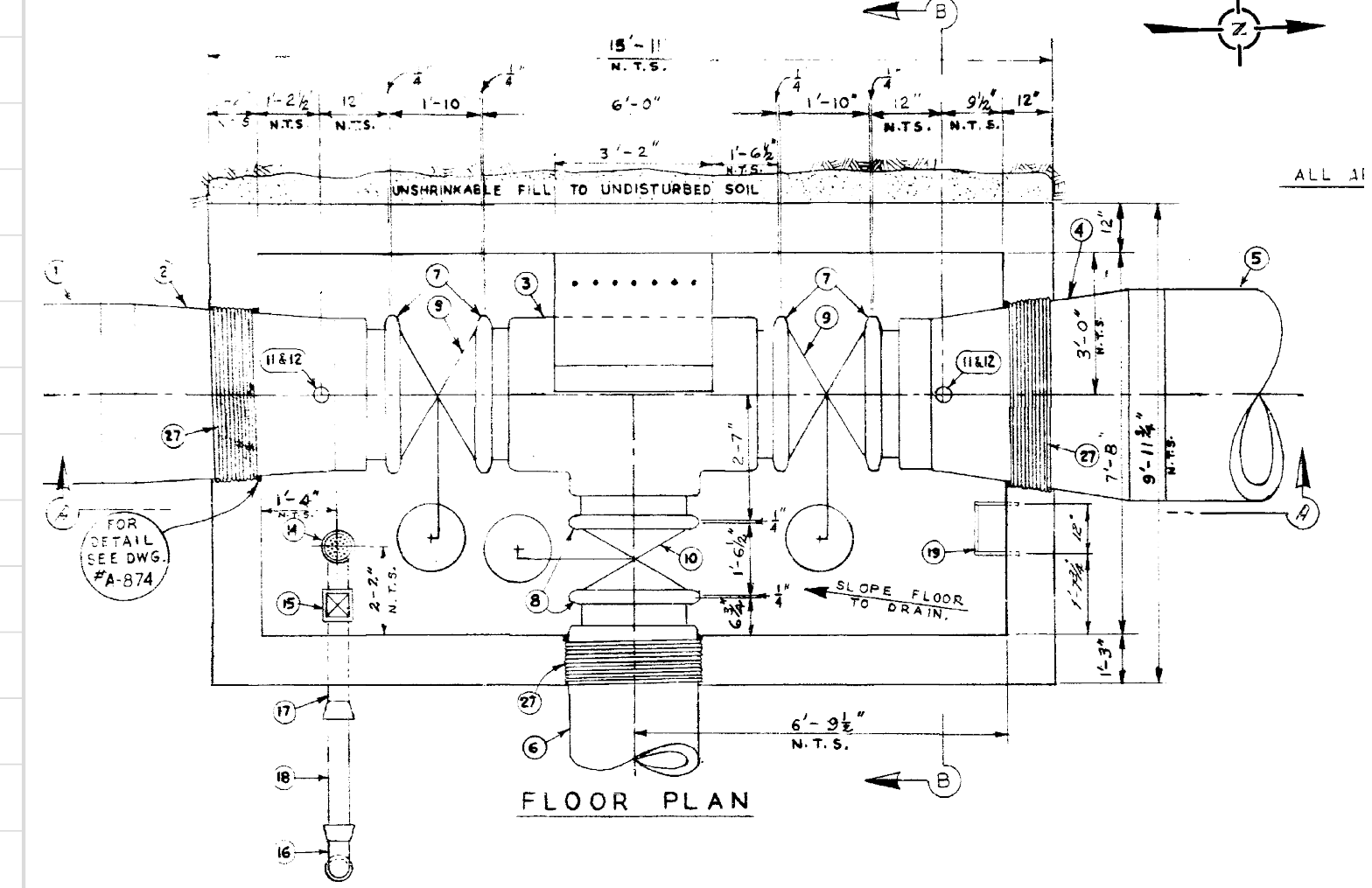
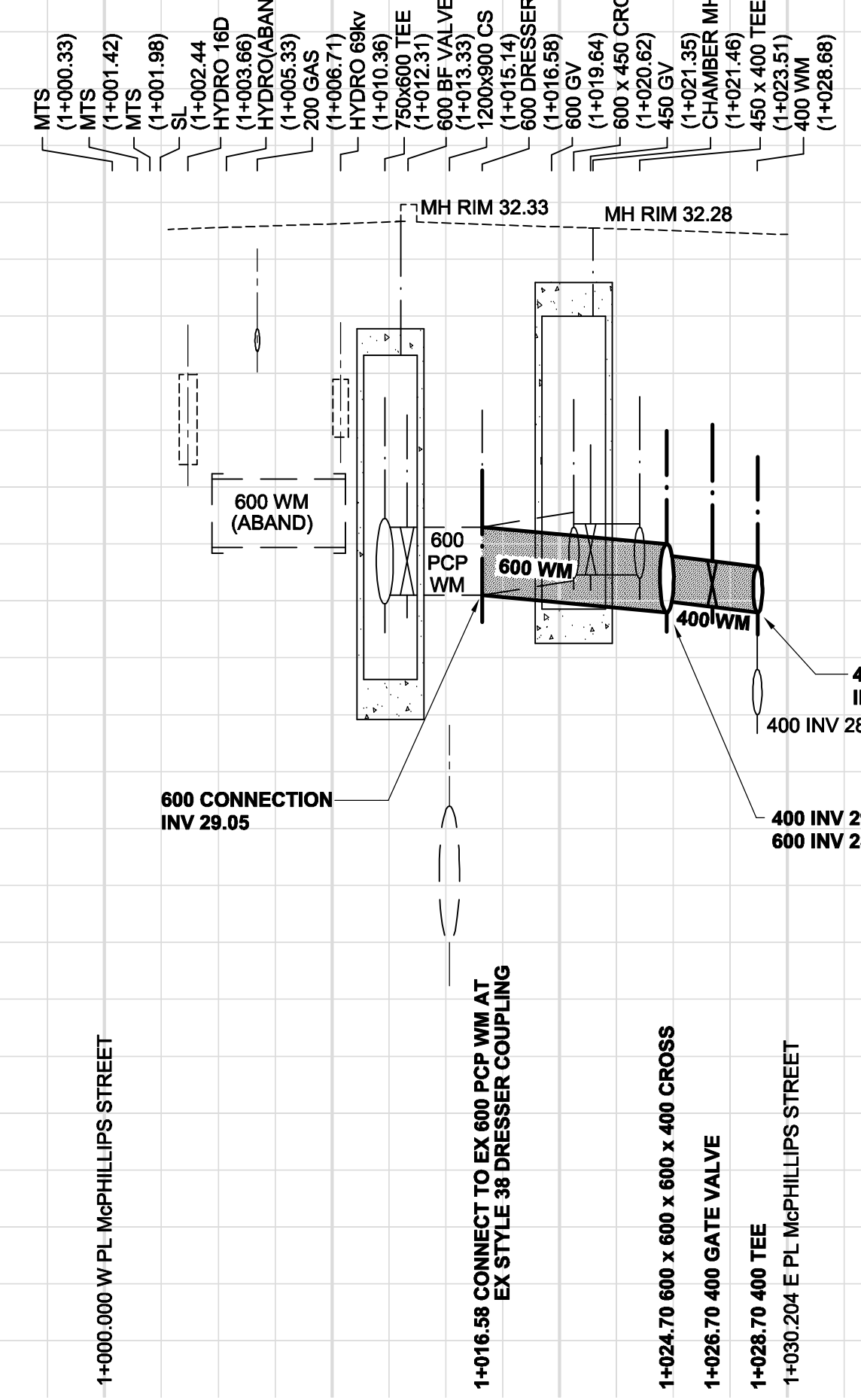


D SIZE 22" x 34" (559mm x 864mm)

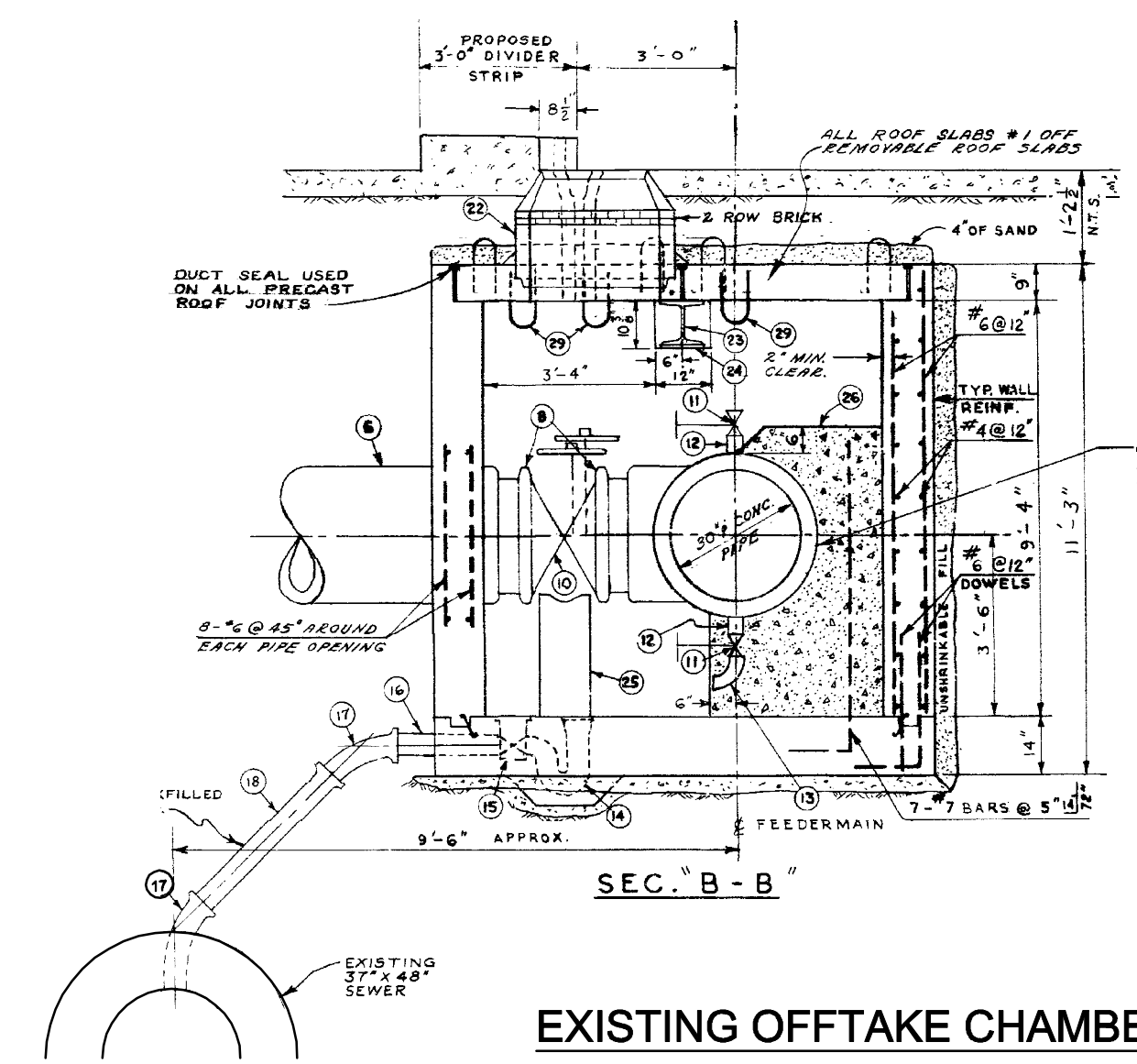
PLOT: 1010604-203:28 PM

AECOM FILE NAME: 060149250_01-C-1001_RX.dwg Saved By: AECOM REVIEW DRFT CHK FMI

EXISTING FEATURES
233.0
232.0
231.0
230.0
229.0
228.0
227.0
226.0
225.0
224.0



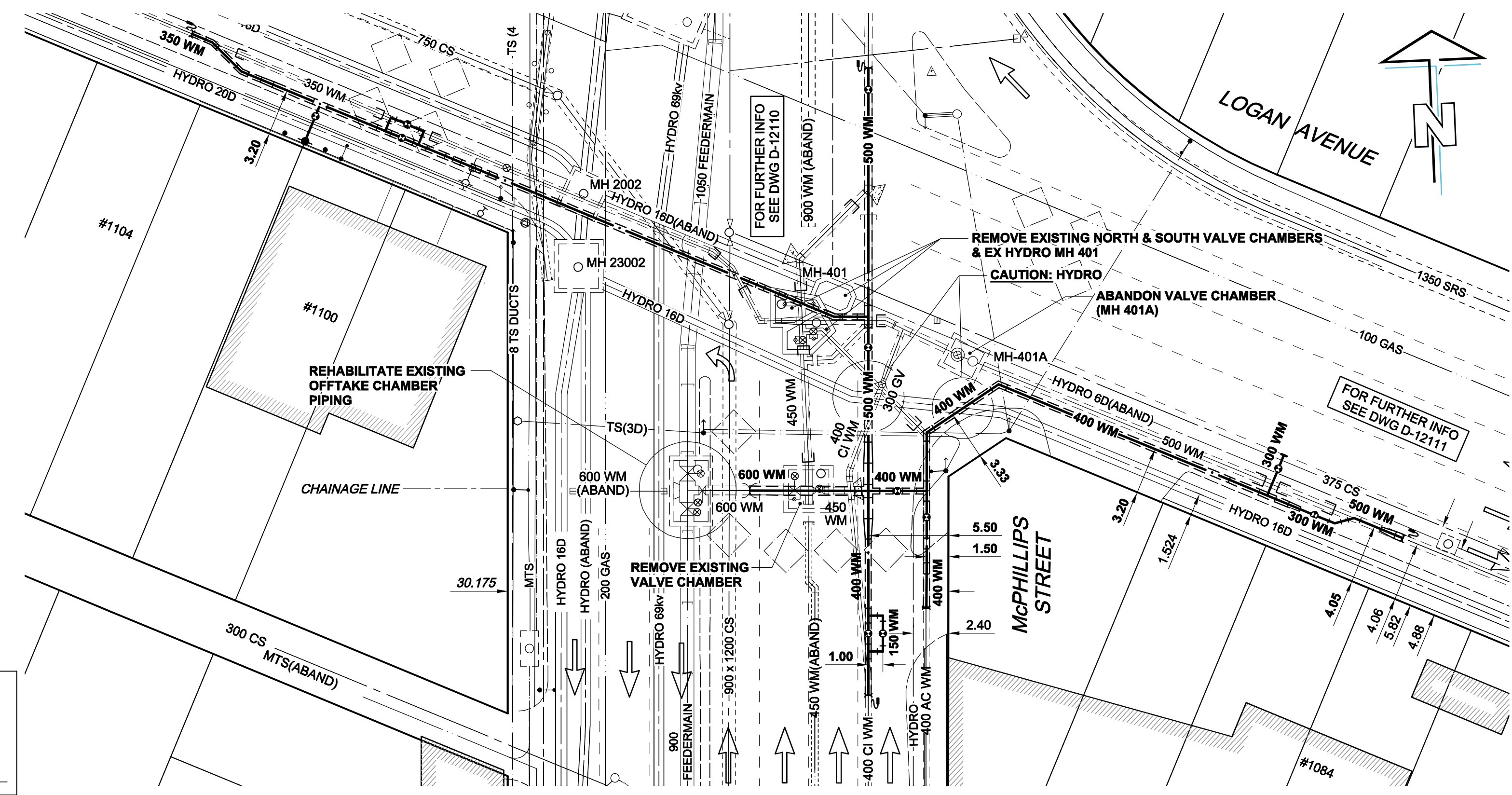
MATERIAL LIST				
NO.	AMT	SIZE	CONC.	DESCRIPTION
1	1	3/8"	"	REDUCER (BELL TO METRIC) 5'-10" LONG
2	1	3/8" X 3/8"	"	TEE (METALLIC ENDS)
3	1	30 X 10 X 24	"	INCREASER (METALLIC TO SPIGOT) 5'-10" LONG
4	1	30 X 42"	"	PIPE
5	1	42"	"	PIPE
6	1	24"	"	PIPE (METALLIC TO DRESSER COUPLING)
7	4	30"	"	VICTAULIC COUPLINGS STYLE # 44
8	2	24"	"	"
9	2	30"	"	BUTTERFLY VALVES (VICTAULIC ENDS)
10	1	24"	"	"
11	4	3"	"	BRONZE GATE VALVES (SCREWED ENDS)
12	4	3/8" X 1/2"	"	HURDLES (SCREWED ENDS)
13	2	3/8" X 90"	"	GULLY ELBOWS (SCREWED ENDS)
14	1	4"	"	C.I. "P" TRAP WITH SCREEN-ON COVER
15	1	4"	"	BACKWATER VALVE
16	1	4" X 2'-0"	"	C.I. SPIGOT TO BELL
17	2	4" X 45"	"	C.I. ELBOW - SPIGOT TO BELL
18	1	4" X 3'-5"	"	C.I. SPIGOT TO BELL
19	10	3/8" BAR	"	STD. METRO WATERWORKS 1/4" STEPS FOR DETAIL SEE DWG. M. 4-917
20	3	LARGE	"	ADJUSTABLE VALVE BOXES W/ STD. METRO WATERWORKS COVER.
21	1	2'-6"	"	STD. METRO WATERWORKS M.H. FRAME & COVER.
22	1	2'-6"	"	PRECAST CONC. DUCKER GASEATED M.H. SECTION WITH M.H. STEPS 1/4" STEPS
23	1	10 W @ 49"	"	STEEL BEAM X 14'-9 1/2" LG.
24	2	1/2" X 6" X 1/2"	"	BEARING R.S.
25	3	12" X 24"	"	CONC. SADDLE WITH BULLING PAPER BETWEEN SADDLE AND VALVE
26	1	3'-2" WIDE	"	TIEOUT BLOCK
27	3	3"	"	DRY SPUN HEMP WRAPPED AROUND PIPE BETWEEN NOTCHES IN BRICK
28	24	3/8"	"	LIFTING LUGS 4-PER SLAB. FOR DETAIL SEE DWG. M. 4-918
29	6	3/8"	"	U-BOLT HOOKS 2-PER VALVE. FOR DETAIL SEE DWG. M. 4-917



EXISTING OFFTAKE CHAMBER
(FOR INFORMATION ONLY)

GENERAL CONSTRUCTION NOTES:

1. EXPOSE WATERMAIN CONNECTIONS AND CONFIRM PIPE INVERTS AND O.D.'s PRIOR TO CONSTRUCTION
2. INSTALL WATERMAIN BY TRENCHLESS METHODS WHERE NOTED.
3. ALL MATERIALS SHALL CONFORM TO THE CITY OF WINNIPEG STANDARD CONSTRUCTION SPECIFICATIONS.
4. MINIMUM COVER TO TOP OF PROPOSED WATERMAIN SHALL BE 2.5m FROM STREET CENTERLINE.
5. INSTALL ALL HYDRANTS WITH FLANGE ELEVATION 50mm TO 150mm ABOVE FINISHED GRADE.
6. REPLACE ALL EXISTING LEAD SERVICES FROM THE PROPOSED WATERMAIN TO PROPERTY LINE.
7. NOTIFY ALL AFFECTED RESIDENTS AND BUSINESSES 24 HOURS IN ADVANCE OF ANY WATER SHUTDOWN OR DISRUPTION OF SERVICE.
8. LOCATION OF WATER SERVICES SHOWN ON DRAWINGS ARE APPROXIMATE. THE CONTRACTOR SHALL FIELD LOCATE ALL WATER SERVICES PRIOR TO CONSTRUCTION.
9. BACKFILL UNDER McPHILLIPS STREET & LOGAN AVENUE PAVEMENT AND UNDER OR WITHIN 1.0m OF OTHER PAVEMENTS, INCLUDING SIDEWALKS SHALL BE CLASS 3 BACKFILL.
10. SEE SPECIFICATIONS FOR DETAILS OF THE REHABILITATION OF THE EXISTING OFFTAKE CHAMBER PIPING.



EXISTING	LEGEND - PLAN	NEW	EXISTING	LEGEND - PROFILE	NEW
150 WM	WATERMAIN	150 WM	CURB STOP	150 WM	WATERMAIN
HYDRANT	REDUCER	HYDRANT	REDUCER	HYDRANT	REDUCER
VALVE	COUPLING	VALVE	COUPLING	VALVE	COUPLING
300 LDS	LAND DRAINAGE SEWER	300 LDS	ANODE	300 LDS	LAND DRAINAGE SEWER
250 WWS	WASTE WATER SEWER	250 WWS	HYDRO	250 WWS	WASTE WATER SEWER
MANHOLE	MTS	MANHOLE	MTS	MANHOLE	MTS
CATCH BASIN	GAS	CATCH BASIN	GAS	CATCH BASIN	GAS
CURB INLET	TESTHOLE	CURB INLET	TESTHOLE	CURB INLET	TESTHOLE
CULVERT	LAMP STANDARD	CULVERT	LAMP STANDARD	CULVERT	LAMP STANDARD
PIPE ABANDONMENTS	TREE	PIPE ABANDONMENTS	TREE	PIPE ABANDONMENTS	TREE
SURVEY BAR		SURVEY BAR		SURVEY BAR	

LOCATION APPROVED UNDERGROUND STRUCTURES
 SUPPR. U/G STRUCTURES DATE COMMITTEE
 NOTE: LOCATION OF UNDERGROUND STRUCTURES AS SHOWN ARE BASED ON THE BEST INFORMATION AVAILABLE. BUT NO GUARANTEE IS GIVEN THAT ALL EXISTING UTILITIES ARE SHOWN OR THAT THE GIVEN LOCATIONS ARE EXACT. CONFIRMATION OF EXISTENCE AND EXACT LOCATION OF ALL SERVICES MUST BE OBTAINED FROM THE INDIVIDUAL UTILITIES BEFORE PROCEEDING WITH CONSTRUCTION.

DESIGNED BY	FMI	CHECKED BY	Marv McDonald
DRAWN BY	WJd	APPROVED BY	Bryan Weber
HOR. SCALE	1:250	RELEASED FOR CONSTRUCTION	Kaz Zurek
VERT. SCALE	1:50	DATE	10/06/04

PROFESSIONAL'S SEAL
 Revision 0
 Issued For Construction
 WAS SEALED BY
 E.D.J. Toupin
 AND DATED
 2010/06/04

THE CITY OF WINNIPEG
 WATER AND WASTE DEPARTMENT

WATER SUPPLY UPGRADES
 McPHILLIPS STREET at
 LOGAN AVENUE
 McPHILLIPS STREET
 PLAN & PROFILE THRU EXISTING OFFTAKE CHAMBER

SHEET 1 OF 3
 CITY DRAWING NUMBER
 D-12109

BID OPPORTUNITY NO. 459-2010