

D SIZE 22" x 34" (559mm x 864mm)

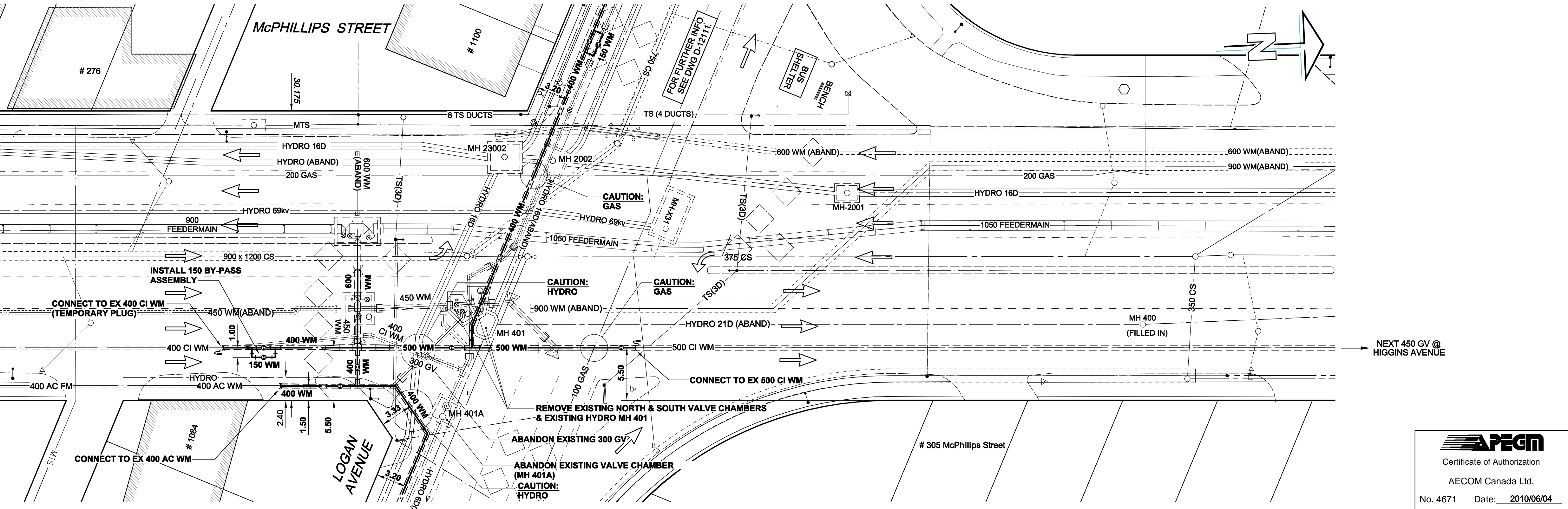
PLOT: 10/06/04 2:07:02 PM

AECOM REVIEW DRFT CHK FMI  
AECOM FILE NAME: 060149250\_01-C-1002\_RX.dwg Saved By: [REDACTED]

EXISTING FEATURES

233.0  
232.0  
231.0  
230.0  
229.0  
228.0  
227.0  
226.0  
225.0  
224.0

CHAINAGE ALONG EAST PROPERTY LINE



ADDRESS	NATURE OF SERVICE	SIZE	MATERIAL	DISTANCE SC TO PROPERTY	POSITION OF SC (curb stop)	POSITION OF CC (corp)	COMMENTS:
305	MCPHILLIPS	2 in (50 mm)	POLY V	1.0 ft (0.3 m)	Long 88.0 ft (26.8 m) E of EL BLDG	Long 0.0 ft (0.0 m) OPP of SC	SERV OFF LOGAN
300	MCPHILLIPS	1 in (25 mm)	COPPER	1.0 ft (0.3 m)	Long 187.0 ft (56.9 m) W of EL BLDG	Long 0.0 ft (0.0 m) OPP of SC	
300	MCPHILLIPS	1 in (25 mm)	COPPER	1.0 ft (0.3 m)	Long 9.0 ft (2.7 m) S of SL OF HILLOCK	Long 26.0 ft (7.9 m) N of NL BLDG PROD	CPLG 66E OF S/C REV TAPPED
277	MCPHILLIPS	1 1/2 in (38 mm)	LEAD	(0.0 m)	Long 12.8 ft (3.8 m) N of EL ALEXANDER	Long 0.0 ft (0.0 m) OPP of SC	SERVICE OFF MAUDE
276	MCPHILLIPS	3/4 in (19 mm)	COPPER	1.0 ft (0.3 m)	Long 132.0 ft (40.2 m) S of SL LOGAN	Long 0.0 ft (0.0 m) OPP of SC	
272	MCPHILLIPS	1 1/2 in (38 mm)	COPPER	1.0 ft (0.3 m)	Long 31.5 ft (9.6 m) S of EL OF HOUSE	Long 9.0 ft (2.7 m) E of SC	SERVICED OFF ALEXANDER
267	MCPHILLIPS	1 in (25 mm)	COPPER	1.0 ft (0.3 m)	Long 48.0 ft (14.6 m) W of WL MCPHILLIPS	Long 0.0 ft (0.0 m) OPP of SC	
258	MCPHILLIPS	1 in (25 mm)	COPPER	1.0 ft (0.3 m)	Long 15.5 ft (4.7 m) E of WL OF BLDG	Long 0.0 ft (0.0 m) OPP of SC	
250	MCPHILLIPS	8 in (203 mm)	POLY V	67.5 ft (20.6 m)	Long 46.0 ft (14.0 m) S of SL OF ALEXANDER	Long 0.0 ft (0.0 m) OPP of SC	SAME AS VALVE
250	MCPHILLIPS	1 in (25 mm)	COPPER	1.0 ft (0.3 m)	Long 9.5 ft (2.9 m) W of WL 1152 ALEXANDER	Long 2.0 ft (0.6 m) W of SC	SERVICED OFF ALEXANDER
250	MCPHILLIPS	1 in (25 mm)	COPPER	1.0 ft (0.3 m)	Long 140.0 ft (42.7 m) W of WL MCPHILLIPS	Long 0.0 ft (0.0 m) OPP of SC	
245	MCPHILLIPS	1 in (25 mm)	COPPER	1.0 ft (0.3 m)	Long 23.0 ft (7.0 m) N of SL BLDG	Long 3.5 ft (1.1 m) W of SC	DOUBLE WITH 240
240	MCPHILLIPS	3/4 in (19 mm)	COPPER	1.5 ft (0.5 m)	Long 23.8 ft (7.3 m) S of NL BLDG	Long 0.0 ft (0.0 m) OPP of SC	AKA 1053 PACIFIC
235	MCPHILLIPS	1 in (25 mm)	COPPER	1.5 ft (0.5 m)	Long 78.0 ft (23.8 m) N of NL PACIFIC	Long 70.0 ft (21.3 m) N of NL PACIFIC	DOUBLE WITH 250
235	MCPHILLIPS	2 in (50 mm)	COPPER	5.0 ft (1.5 m)	Long 34.0 ft (10.4 m) E of EL OF BLDG	Long 0.0 ft (0.0 m) OPP of SC	
230	MCPHILLIPS	1 in (25 mm)	COPPER	8.0 ft (2.4 m)	Long 54.0 ft (16.5 m) E of EL OF MCPHILLIPS	Long 0.0 ft (0.0 m) OPP of SC	AKA 1030 PACIFIC
222	MCPHILLIPS	1 in (25 mm)	COPPER	1.5 ft (0.5 m)	Long 47.0 ft (14.3 m) E of EL OF BLDG	Long 3.0 ft (0.9 m) W of SC	SERVICED OFF PACIFIC
217	MCPHILLIPS	3/4 in (19 mm)	COPPER	1.5 ft (0.5 m)	Long 4.0 ft (1.2 m) N of SL OF BLDG	Long 0.0 ft (0.0 m) OPP of SC	
211	MCPHILLIPS	3/4 in (19 mm)	COPPER	7.0 ft (2.1 m)	Long 184.0 ft (56.1 m) S of SL OF PACIFIC	Long 0.0 ft (0.0 m) OPP of SC	SAME AS VALVE AKA 1030 PACIFIC
1049	PACIFIC AVE	1 in (25 mm)	COPPER	2.5 ft (0.8 m)	Long 212.0 ft (64.6 m) N of EL ELGIN	Long 5.0 ft (1.5 m) S of SL BLDG	
1035	PACIFIC AVE	1 in (25 mm)	COPPER	2.5 ft (0.8 m)	Long 141.5 ft (43.1 m) E of EL MCPHILLIPS	Long 24.5 ft (7.5 m) W of SC	
1030	PACIFIC AVE	1 in (25 mm)	COPPER	6.0 ft (1.8 m)	Long 47.0 ft (14.3 m) E of EL WEST WING BLDG	Long 0.0 ft (0.0 m) OPP of SC	
1021	PACIFIC AVE	6 in (152 mm)	CAST IRON	17.0 ft (5.2 m)	Long 194.0 ft (59.1 m) S of SL OF PACIFIC	Long 0.0 ft (0.0 m) OPP of SC	SAME AS VALVE
1021	PACIFIC AVE	6 in (152 mm)	CAST IRON	32.0 ft (9.8 m)	Long 184.0 ft (56.1 m) S of SL OF PACIFIC	Long 0.0 ft (0.0 m) OPP of SC	SAME AS VALVE
1021	PACIFIC AVE	2 in (50 mm)	COPPER	14.0 ft (4.3 m)	Long 14.0 ft (4.3 m) W of EL MAUDE	Long 0.0 ft (0.0 m) OPP of SC	
1021	PACIFIC AVE	2 in (50 mm)	COPPER	13.0 ft (4.0 m)	Long 14.0 ft (4.3 m) W of EL MAUDE	Long 0.0 ft (0.0 m) OPP of SC	

- GENERAL CONSTRUCTION NOTES:**
1. EXPOSE WATERMAIN CONNECTIONS AND CONFIRM PIPE INVERTS AND O.D.'s PRIOR TO CONSTRUCTION
  2. INSTALL WATERMAIN BY TRENCHLESS METHODS WHERE NOTED.
  3. ALL MATERIALS SHALL CONFORM TO THE CITY OF WINNIPEG STANDARD CONSTRUCTION SPECIFICATIONS.
  4. MINIMUM COVER TO TOP OF PROPOSED WATERMAIN SHALL BE 2.5m FROM STREET CENTERLINE.
  5. INSTALL ALL HYDRANTS WITH FLANGE ELEVATION 50mm TO 150mm ABOVE FINISHED GRADE.
  6. REPLACE ALL EXISTING LEAD SERVICES FROM THE PROPOSED WATERMAIN TO PROPERTY LINE.
  7. NOTIFY ALL AFFECTED RESIDENTS AND BUSINESSES 24 HOURS IN ADVANCE OF ANY WATER SHUTDOWN OR DISRUPTION OF SERVICE.
  8. LOCATION OF WATER SERVICES SHOWN ON DRAWINGS ARE APPROXIMATE. THE CONTRACTOR SHALL FIELD LOCATE ALL WATER SERVICES PRIOR TO CONSTRUCTION.
  9. BACKFILL UNDER McPHILLIPS STREET & LOGAN AVENUE PAVEMENT AND BACKFILL UNDER OR WITHIN 1.0m OF OTHER PAVEMENTS, INCLUDING SIDEWALKS SHALL BE CLASS 3 BACKFILL.

150 WM	WATERMAIN	150 WM	CURB STOP	150 WM	WATERMAIN	150 WM	LOCATION APPROVED
⊕	HYDRANT	⊕	REDUCER	⊕	HYDRANT	+	UNDERGROUND STRUCTURES
⊕	VALVE	⊕	COUPLING	⊕	VALVE	+	
⊕	LAND DRAINAGE SEWER	⊕	ANODE	⊕	LAND DRAINAGE SEWER	+	
⊕	WASTE WATER SEWER	⊕	HYDRO	⊕	WASTE WATER SEWER	+	
○	MANHOLE	○	MTS	○	MANHOLE	○	
□	CATCH BASIN	□	GAS	□	CATCH BASIN	□	
△	CURB INLET	△	TESTHOLE	△	CURB INLET	△	
▭	CULVERT	▭	LAMP STANDARD	▭	CULVERT	▭	
⊖	PIPE ABANDONMENTS	⊖	TREE	⊖	PIPE ABANDONMENTS	⊖	
⊕	SURVEY BAR	⊕		⊕	SURVEY BAR	⊕	
---	EXISTING	---	LEGEND - PLAN	---	EXISTING	---	
---	LEGEND - PLAN	---	LEGEND - PROFILE	---	LEGEND - PROFILE	---	

**LOCATION APPROVED UNDERGROUND STRUCTURES**

SUPR. U/G STRUCTURES DATE COMMITTEE

NOTE: LOCATION OF UNDERGROUND STRUCTURES AS SHOWN ARE BASED ON THE BEST INFORMATION AVAILABLE. BUT NO GUARANTEE IS GIVEN THAT ALL EXISTING UTILITIES ARE SHOWN OR THAT THE GIVEN LOCATIONS ARE EXACT. CONFIRMATION OF EXISTENCE AND EXACT LOCATION OF ALL SERVICES MUST BE OBTAINED FROM THE INDIVIDUAL UTILITIES BEFORE PROCEEDING WITH CONSTRUCTION.

NO.	ISSUED FOR CONSTRUCTION	DATE	BY
0	ISSUED FOR CONSTRUCTION	10/06/04	WJd
	NO. REVISIONS	YYMMDD	BY

DESIGNED BY	FMI	CHECKED BY	Marv McDonald
DRAWN BY	WJd	APPROVED BY	Bryan Weber
HOR. SCALE	1:250	RELEASED FOR CONSTRUCTION	Kaz Zurek
VERT. SCALE	1:50	DATE	10 / 06 / 04

PROFESSIONAL'S SEAL

Revision 0  
Issued For Construction  
WAS SEALED BY  
E.D.J. Toupin  
AND DATED  
2010/06/04

CONSULTANT DRAWING NO.  
060149250\_01-C-1002\_RX.dwg

**APEGM**  
Certificate of Authorization  
AECOM Canada Ltd.  
No. 4671 Date: 2010/06/04

**THE CITY OF WINNIPEG**  
WATER AND WASTE DEPARTMENT

**WATER SUPPLY UPGRADES**  
McPHILLIPS STREET at  
LOGAN AVENUE  
McPHILLIPS STREET  
PLAN & PROFILE

SHEET 2 OF 3  
CITY DRAWING NUMBER  
D-12110  
REV 0

BID OPPORTUNITY NO. 459-2010