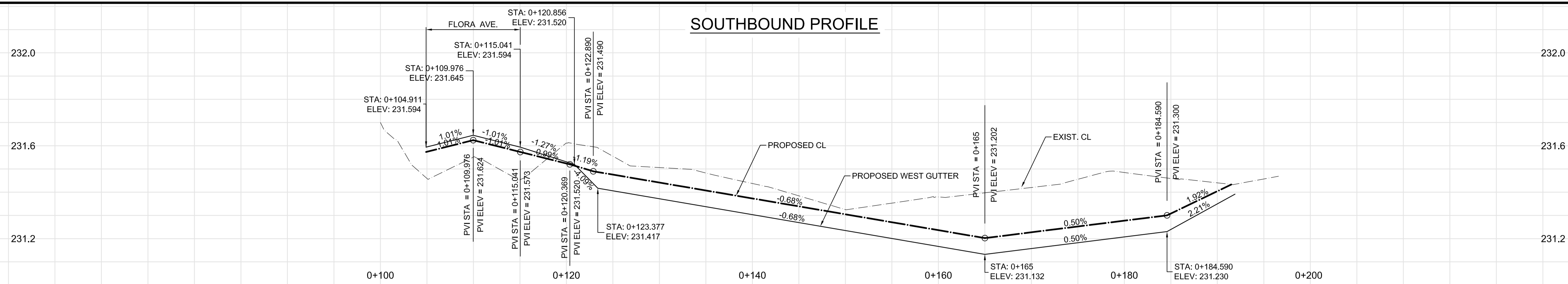
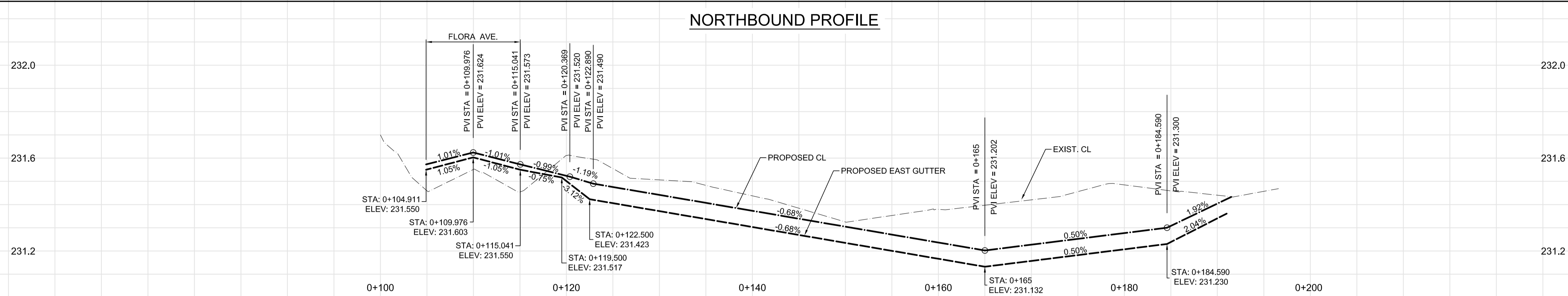


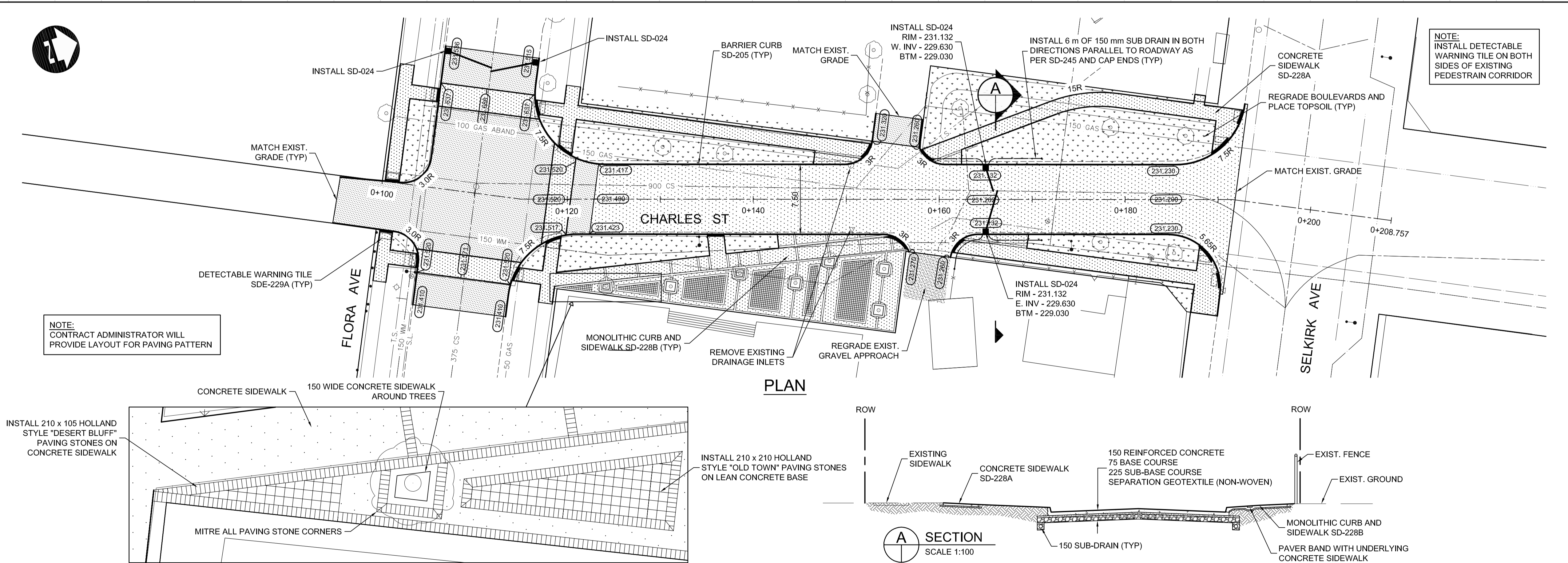
SOUTHBOUND PROFILE



NORTHBOUND PROFILE



- CONSTRUCTION NOTES FOR ROADWAY:**
1. RAISED INTERSECTION AND CURB EXTENSION CURB HEIGHT TYPICALLY 100 mm. CURB TO BE REPLACED AS DIRECTED BY CONTRACT ADMINISTRATOR.
 2. ALL DIMENSIONS ARE TO BACK OF CURB.
 3. ADJUST OR REPLACE EXISTING DRAINAGE INLETS AND MANHOLES AS DIRECTED BY THE CONTRACT ADMINISTRATOR.
 4. RAISE EXISTING MANHOLES IN TRAFFIC CIRCLES AND RAISED INTERSECTIONS TO MATCH GRADE.
 5. ISOLATE MISCELLANEOUS ITEMS IN NEW CONCRETE WORKS AS PER SD-228C.
 6. LEGAL PLAN AND UNDERGROUND INFORMATION FROM CITY OF WINNIPEG LBIS.
 7. TRAFFIC SIGNAL POLES, CONTROLLERS AND UNDERGROUND APPURTENANCES IN PROJECT AREA TO BE UPGRADED BY OTHERS.
 8. CONTRACTOR TO TAKE PRECAUTIONARY STEPS TO AVOID DAMAGE FROM CONSTRUCTION ACTIVITIES TO TREES WITHIN THE LIMITS OF CONSTRUCTION.
 9. LOCATION OF EXISTING SERVICES TO BE CONFIRMED IN THE FIELD BY THE CONTRACTOR.
 10. PLANE OR REMOVE EXISTING ASPHALT OVERLAY WHEN PINNING NEW CURB ON UNDERLYING CONCRETE PAVEMENT.
 11. LIMITS OF CURB AND SIDEWALK REPLACEMENT, JOINT AND SLAB REPAIRS, AND TIE INS TO BE FINALIZED IN THE FIELD BY THE CONTRACT ADMINISTRATOR.
 12. DETECTABLE WARNING TILES TO BE PLACED AT ALL CROSSINGS OF RAISED INTERSECTIONS, ANY WORK AT P1 (REGIONAL) STREETS, AND OTHER LOCATIONS AS DIRECTED BY THE CONTRACT ADMINISTRATOR.
 13. SEE SHEET 15 FOR TYPICAL TRAFFIC CALMING CIRCLE DETAILS AND SECTIONS.
 14. SEE SHEET 16 FOR TYPICAL RAISED INTERSECTION DETAILS AND SECTIONS.
 15. SEE SHEET 16 FOR TYPICAL CURB EXTENSION DETAIL.
 16. SEE SHEET 16 FOR TYPICAL RADIUS RECONSTRUCTION DETAIL.



METRIC

WHOLE NUMBERS INDICATE MILLIMETRES
DECIMAL NUMBERS INDICATE METRES

WARNING

IF POWER EQUIPMENT OR EXPLOSIVES ARE TO BE USED FOR EXCAVATION ON THIS PROJECT THE CONTRACTOR MUST:

1. NOTIFY THE GAS COMPANY OF THE PROPOSED LOCATION OF EXCAVATION.
2. TAKE PRECAUTION TO AVOID DAMAGE TO GAS COMPANY INSTALLATIONS SEE PROVINCIAL REGULATION 210/72 FOR DETAILS.

APEGM
Certificate of Authorization
Dillon Consulting Limited (MB)
No. 1789 Date: JUNE 23, 2010

150 WM	WATERMAIN	150 WM	HYDRO	HYDRO	HYDRO	150 mm W.M.	WATERMAIN	150 mm W.M.
⊕	HYDRANT VALVE	⊕	MTS	MTS	MTS	+	HYDRANT VALVE	+
300 LDS	LAND DRAINAGE SEWER	300 LDS				300 mm L.D.S.	LAND DRAINAGE SEWER	300 mm L.D.S.
250 WWS	WASTE WATER SEWER	250 WWS				250 mm W.W.S.	WASTE WATER SEWER	250 mm W.W.S.
○	MANHOLE	●				○	PROFILE	○
□	CATCH BASIN	■				○	NORTH/WEST GUTTER	○
▽	CURB INLET	▽				○	SOUTH/EAST GUTTER	○
+	JUNCTIONS	+				○	NORTH/WEST T/LANE	○
+	CULVERT	+				○	SOUTH/EAST T/LANE	○
100 GAS	GAS	100 GAS						
EXISTING	LEGEND-PLAN	PROPOSED	EXISTING	LEGEND-PLAN	PROPOSED	EXISTING	LEGEND-PROFILE	PROPOSED

UNDERGROUND STRUCTURES		B.M. ELEV.
SUPY. U/G STRUCTURES COMMITTEE	DATE	
NOTE: LOCATION OF UNDERGROUND STRUCTURES AS SHOWN ARE BASED ON THE BEST INFORMATION AVAILABLE BUT NO GUARANTEE IS GIVEN THAT ALL EXISTING UTILITIES ARE SHOWN OR THAT THE GIVEN LOCATIONS ARE EXACT. CONFIRMATION OF EXISTENCE AND EXACT LOCATION OF ALL SERVICES MUST BE OBTAINED FROM THE INDIVIDUAL UTILITIES BEFORE PROCEEDING WITH CONSTRUCTION.		
2	ISSUED FOR TENDER	06/23/10 DBW
1	ISSUED FOR 75% REVIEW	06/11/10 DBW
NO.	REVISIONS	DATE BY

DESIGNED BY	RTP
DRAWN BY	TJH
CHECKED BY	DBW
APPROVED BY	
HOR. SCALE	1 : 250
VERTICAL	1 : 10
RELEASED FOR CONSTRUCTION	DATE

ENGINEER'S SEAL
PROVINCE OF MANITOBA
REGISTERED PROFESSIONAL ENGINEER
D.B. WIEBE
06/23/10
Member 22480

THE CITY OF WINNIPEG
PUBLIC WORKS DEPARTMENT

2010 ACTIVE TRANSPORTATION INFRASTRUCTURE STIMULUS PROGRAM
NORTH WINNIPEG

CITY DRAWING NUMBER: P-3323-11
SHEET 11 OF 16
CONSULTANT DRAWING NUMBER

CHARLES STREET RECONSTRUCTION

CONSULTANT PROJECT NUMBER: 09-2692

G:\CAD\092692\Contract\ATP-ARBY-CHARLES.dwg