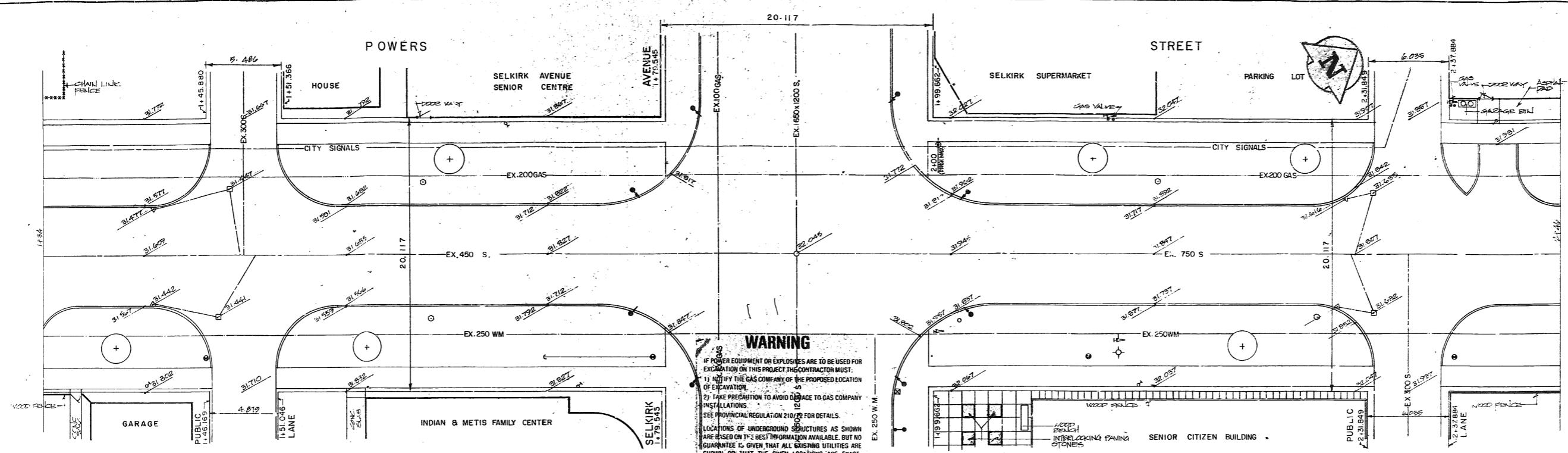


## **APPENDIX 'B'**

# **POWERS AT SELKIRK PARK DRAWINGS (PART B)**



**WARNING**  
 IF POWER EQUIPMENT OR EXPLOSIVES ARE TO BE USED FOR EXCAVATION ON THIS PROJECT THE CONTRACTOR MUST:  
 1) NOTIFY THE GAS COMPANY OF THE PROPOSED LOCATION OF EXCAVATION.  
 2) TAKE PRECAUTION TO AVOID DAMAGE TO GAS COMPANY INSTALLATIONS.  
 SEE PROVINCIAL REGULATION 210/92 FOR DETAILS.  
 LOCATIONS OF UNDERGROUND STRUCTURES AS SHOWN ARE BASED ON THE BEST INFORMATION AVAILABLE, BUT NO GUARANTEE IS GIVEN THAT ALL EXISTING UTILITIES ARE SHOWN OR THAT THE GIVEN LOCATIONS ARE EXACT. CONFIRMATION OF EXISTENCE AND EXACT LOCATION OF ALL SERVICES MUST BE OBTAINED FROM THE INDIVIDUAL UTILITIES BEFORE PROCEEDING WITH CONSTRUCTION.

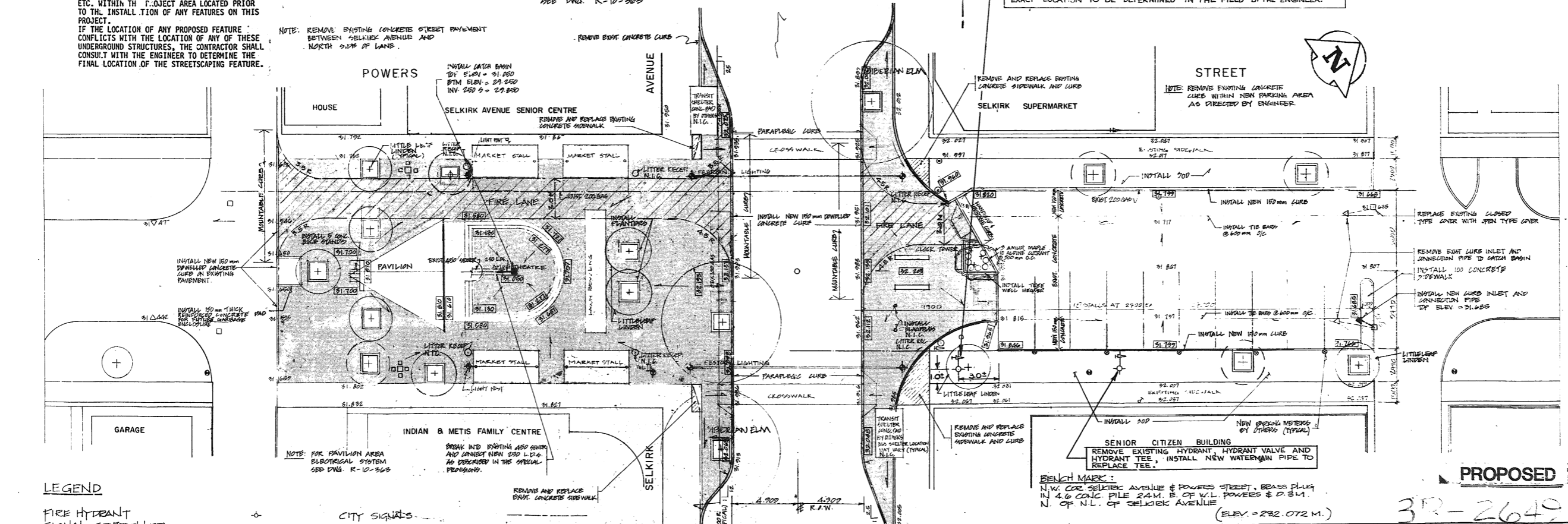
**NOTE:** THE CONTRACTOR SHALL ARRANGE TO HAVE ALL UNDERGROUND UTILITIES, WATERMANS, SEWERS, ETC. WITHIN THE PROJECT AREA LOCATED PRIOR TO THE INSTALLATION OF ANY FEATURES ON THIS PROJECT.  
 IF THE LOCATION OF ANY PROPOSED FEATURE CONFLICTS WITH THE LOCATION OF ANY OF THESE UNDERGROUND STRUCTURES, THE CONTRACTOR SHALL CONSULT WITH THE ENGINEER TO DETERMINE THE FINAL LOCATION OF THE STREETSCAPING FEATURE.

**NOTE:** REMOVE EXISTING CONCRETE STREET PAVEMENT BETWEEN SELKIRK AVENUE AND NORTH SIDE OF LANE.

FOR SELKIRK SQUARE DETAILS SEE DWG. K-10-363

INSTALL 150 mm OFF 250 mm TAPPING SLEEVE (EPOXY COATED C/W STAINLESS STEEL HARDWARE).  
 INSTALL NEW HYDRANT ASSEMBLY (DARLING HYDRANT) IN ACCORDANCE WITH SPECIFICATION CW 2112-R3.  
 EXACT LOCATION TO BE DETERMINED IN THE FIELD BY THE ENGINEER.

**EXISTING**



**LEGEND**

- FIRE HYDRANT
- SIGNAL CONTROLLER
- CURB STOP
- SIGN
- POLE
- CATCH BASIN
- CATCH BASIN INLET
- MANHOLE
- GUY ANCHOR
- EXISTING ELEVATION
- PROPOSED ELEVATION

- CITY SIGNALS
- SEWER
- WATERMANS
- GAS
- TRAFFIC SIGNAL
- VALVE
- GEODETIC BENCH MARK
- EXISTING INTERLOCK
- EXISTING TREES

**BENCH MARK:**  
 N.W. COR. SELKIRK AVENUE & POWERS STREET, BRASS PILE IN 4.0 CONC. PILE 24 M. E. OF W.L. POWERS & 0.3 M. N. OF N.L. OF SELKIRK AVENUE (ELEV. = 232.072 M.)

**PROPOSED**

3R-2649

**The Prairie Partnership**  
 Thompson Hill Architects & Planners  
 80 Market St. - Winnipeg, Manitoba - Canada R3B 0P5 (204) 588-0788

NO.	REVISIONS	DATE	BY
6	ADDED HYDRANT RELOCATION	OCT 27 1984	NS/BJE
5	REVISED SELKIRK SQ. DETAILS	AUG 28 1984	NS/BJE
4	GENERAL REVISION	AUG 23 1984	NS/BJE
3	ADDED SIGN ELEVATIONS	JUL 27 1984	NS/BJE
2	ADDED FIRE LANE	JUL 12 1984	NS/BJE
1	GENERAL REVISION	JUN 28 1984	NS/BJE

**IDE**  
 INTERDISCIPLINARY ENGINEERING COMPANY  
 WINNIPEG PROFESSIONAL ENGINEERS MANITOBA

DESIGNED BY: [ ]  
 CHECKED BY: B.D.E.  
 DRAWN BY: A.L.A.  
 DATE: MAY 25, 1984  
 APPROVED BY: [ ]  
 SCALE: 1:150 M  
 DETAIL: [ ]  
 DATE: [ ]

**PROFESSIONAL ENGINEER**  
 D.J. SCOTT  
 15.6.84  
 CONSULTANT PLAN NO. R-4-363

**THE CITY OF WINNIPEG**  
 ENVIRONMENTAL PLANNING DEPARTMENT

SELKIRK AVENUE STREETSCAPING PROJECT  
 POWERS AVE STA 1434 TO STA 2446 (SELKIRK SQ.)

EXISTING CONDITIONS LAYOUT AND GRADES

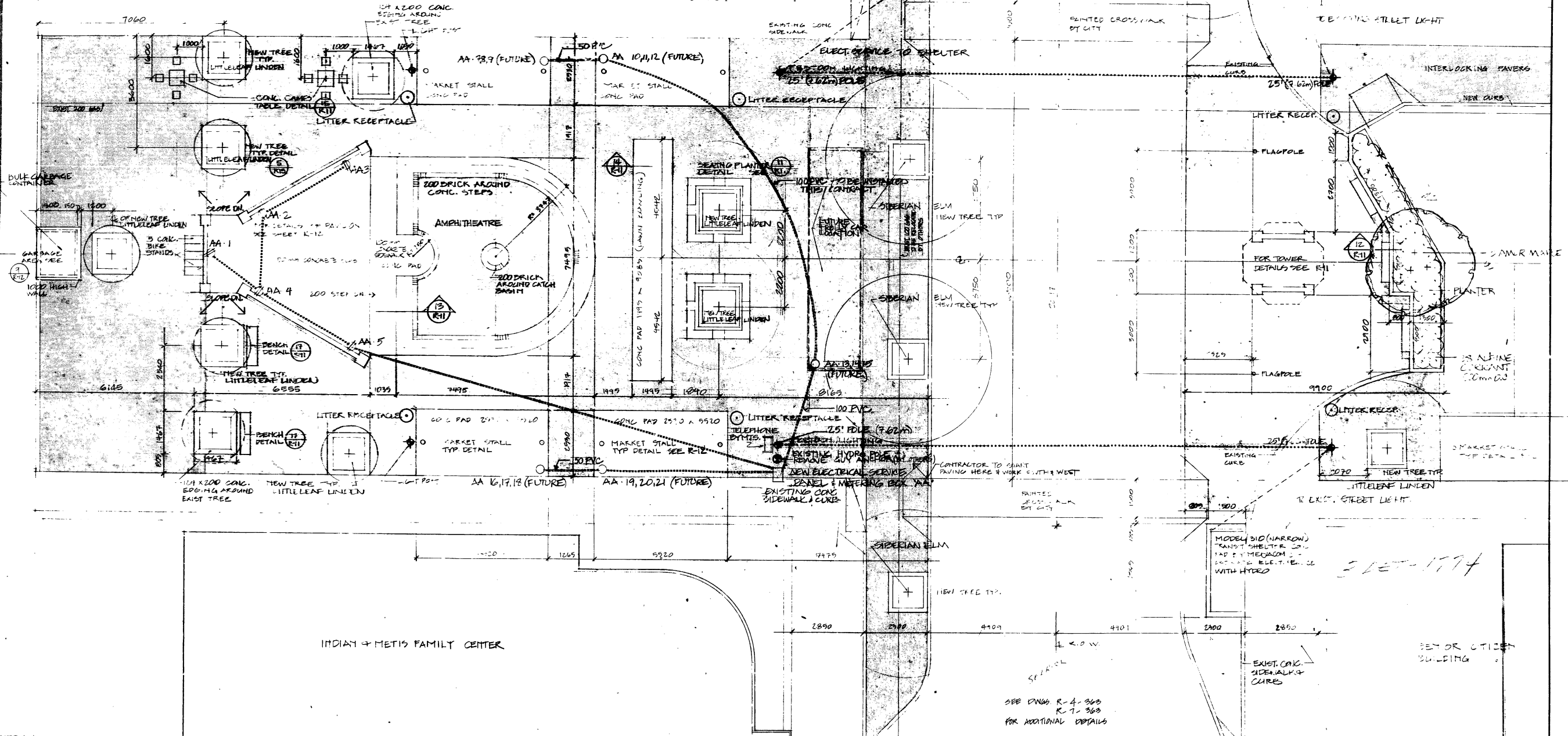
FIELD BOOK  
 PLAN NO.

**PURCHASE ITEMS**  
**DETAILS NOTES:**

1. Flagpole - Model SA-20 standard sectional aluminum pole as mfg. by John Ewing & Co., standard finish c/w internal revolving track - install according to mfg. specifications.
2. Garbage Receptacle - Model 100 as mfg. by Scrip-Tite Ltd. 20" steel tubular frame with 2x2 cedar slats stained medium brown c/w mesh basket that can be locked in place - install according to mfg. specifications.
3. Games Table & Seats - Model 440-4, 7 feet x 2 feet steel and concrete table on central pipe frame c/w ceramic inserts for games and 4 seats with wood top - install according to mfg. specifications and detail 15-R-11 for spacing.
4. Bike Stand - prefab concrete bikerack mfg. by Spymart's Ltd. with exposed aggregate surface and galvanized ring for locking bicycles. Install level with pavers or surrounding surface.
5. Bulk Garbage Container - 2 yard container as manufactured by Simon Day Co. 64" wide x 48" high x 56" deep on heavy duty wheels with pick up bars for City of Winnipeg trucks.

SELKIRK AVE DENICORS CENTER

**NOTE:** THE CONTRACTOR SHALL ARRANGE TO HAVE ALL UNDERGROUND UTILITIES, WATERMANS, SEWERS, ETC. WITHIN THE PROJECT AREA LOCATED PRIOR TO THE INSTALLATION OF ANY FEATURES ON THIS PROJECT.  
IF THE LOCATION OF ANY PROPOSED FEATURE CONFLICTS WITH THE LOCATION OF ANY OF THESE UNDERGROUND STRUCTURES, THE CONTRACTOR SHALL CONSULT WITH THE ENGINEER TO DETERMINE THE FINAL LOCATION OF THE STREETSCAPING FEATURE.



EXISTING LIGHTING  
PROPOSED LIGHT STANDARDS  
PROPOSED ELECT. SERVICE



**The Prairie Partnership**  
Thompson MacFarlane Grogan Architects  
90 Market St. • Winnipeg • Manitoba • Can. • 204 • 938 093 (204) 956-0938

**IDE**  
INTERDISCIPLINARY ENGINEERING COMPANY  
PROFESSIONAL ENGINEERS  
WINNIPEG MANITOBA

DESIGNED BY: D.T., T.M.  
CHECKED BY: R.G.  
DRAWN BY: T.M.  
DATE: MAY 25, 1984  
SCALE: AS NOTED  
APPROVED BY:  
DETAIL: DATE:

NO. REVISIONS & DATE BY

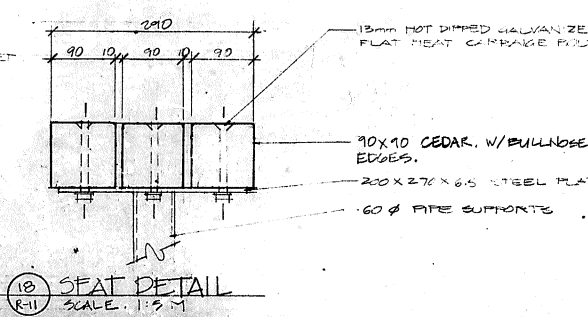
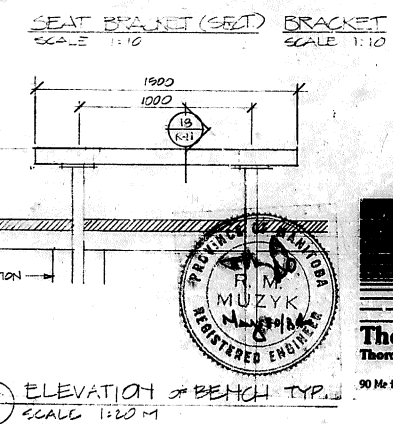
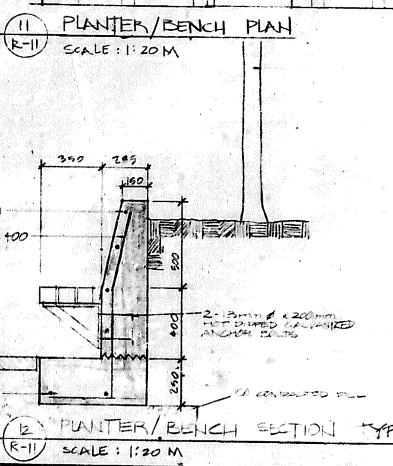
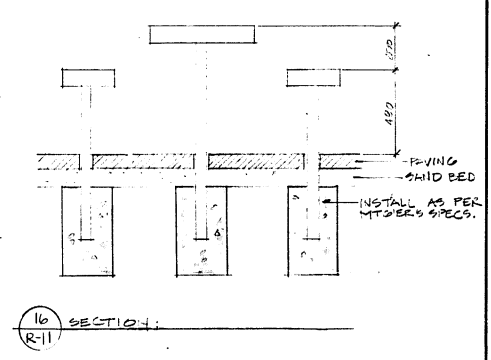
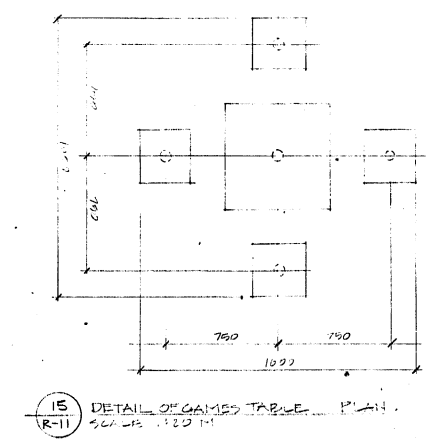
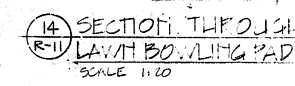
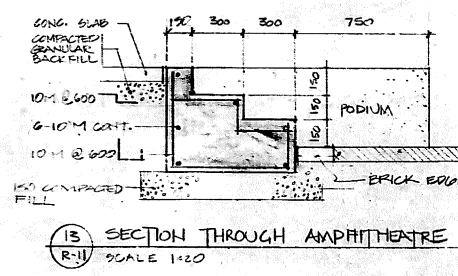
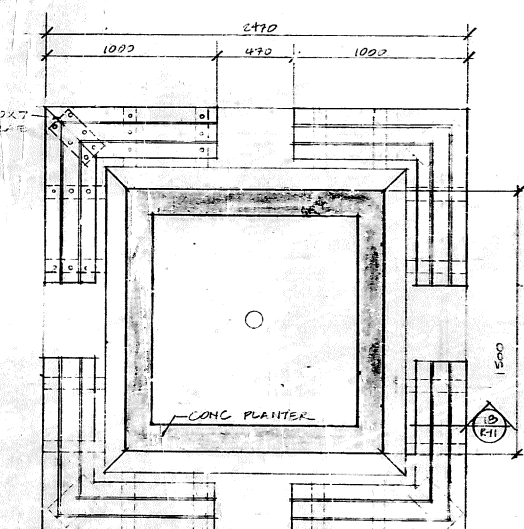
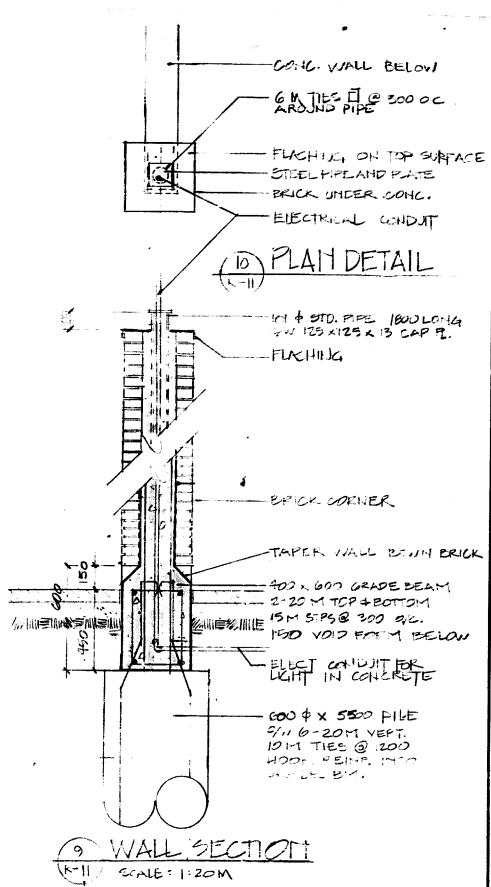
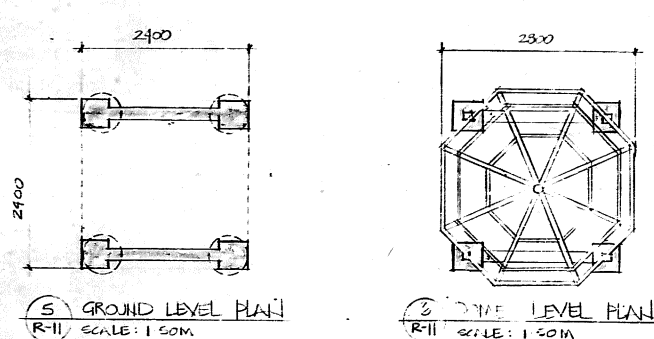
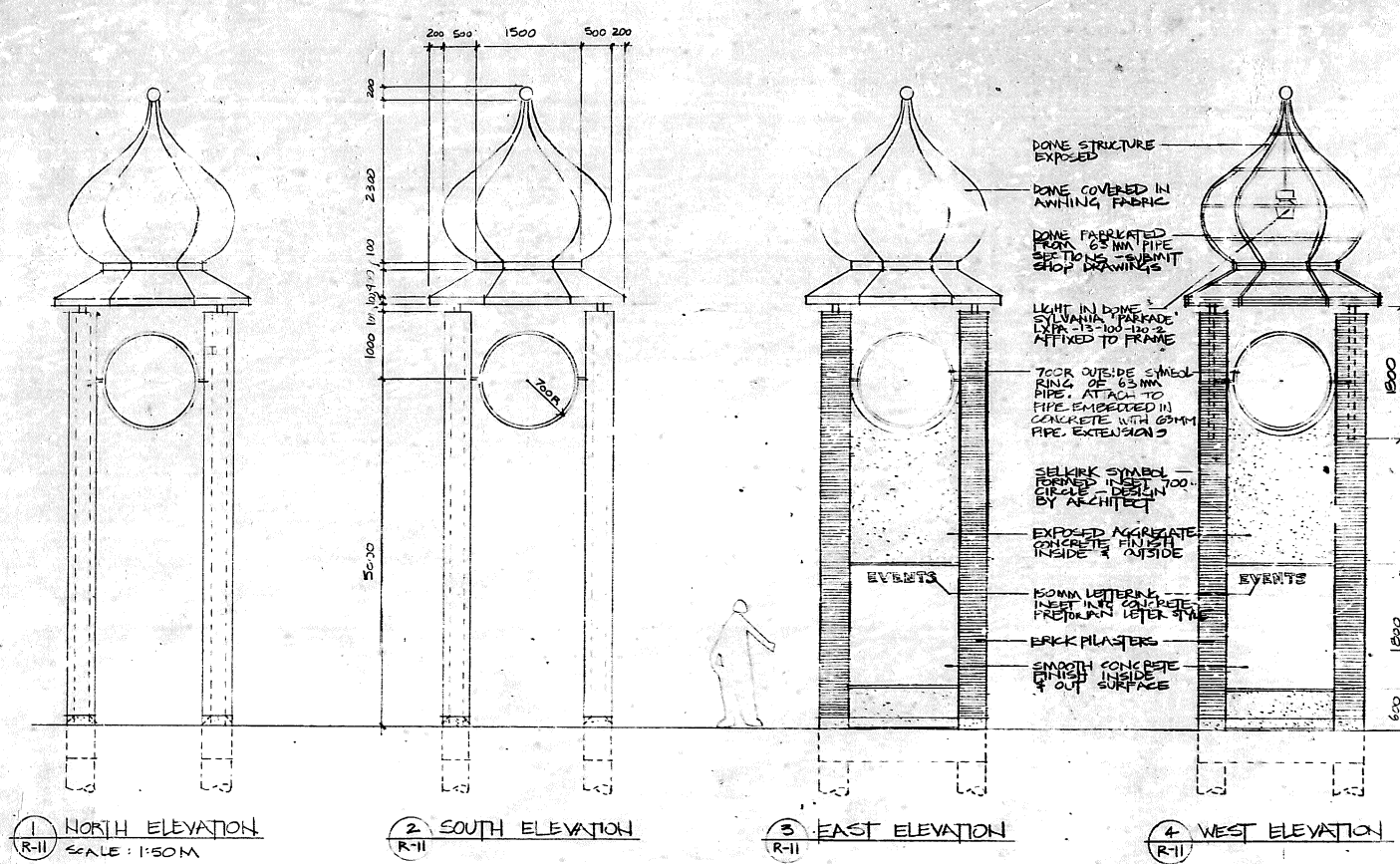
ENGINEER'S SEAL  
CONSULTANT PLAN NO.  
**R-10-363**

**THE CITY OF WINNIPEG**  
ENVIRONMENTAL PLANNING DEPARTMENT

SELKIRK AVENUE STREETSCAPING PROJECT  
**PLAN of SELKIRK SQUARE**

FIELD BOOK  
PLAN NO.

# TOWER



NOTE: ALL PIPES ASSEMBLED TO BE INSTALLED AND MAINTAINED AFTER THE CONSTRUCTION OF THE TOWER. ALL PIPES TO BE INSTALLED WITH SLOPE OF 1:100 UNLESS OTHERWISE SPECIFIED.

NOTE: SEAT PIPES ASSEMBLED TO BE INSTALLED AND MAINTAINED AFTER THE CONSTRUCTION OF THE TOWER. ALL PIPES TO BE INSTALLED WITH SLOPE OF 1:100 UNLESS OTHERWISE SPECIFIED.



3DET-1775

**The Prairie Partnership**  
Thompson McFarlane Gregoire Architects  
90 Mc Int St. • Winnipeg • Manitoba • Canada • R3B 0P3 (204) 956-0938

NO.	REVISIONS	DATE	BY
1	GENERAL REVISION	JUNE 1984	R.P.

**IDE**  
INTERDISCIPLINARY ENGINEERING COMPANY  
PROFESSIONAL ENGINEERS  
WINNIPEG MANITOBA

DESIGNED BY D.T.  
CHECKED BY R.G.  
DRAWN BY T.M. & D.T.  
DATE MAY 25, 1984  
SCALE: AS NOTED  
APPROVED BY  
DETAIL: DATE

ENGINEER'S SEAL  
CONSULTANT PLAN NO.  
R-II - 363

**THE CITY OF WINNIPEG**  
ENVIRONMENTAL PLANNING DEPARTMENT

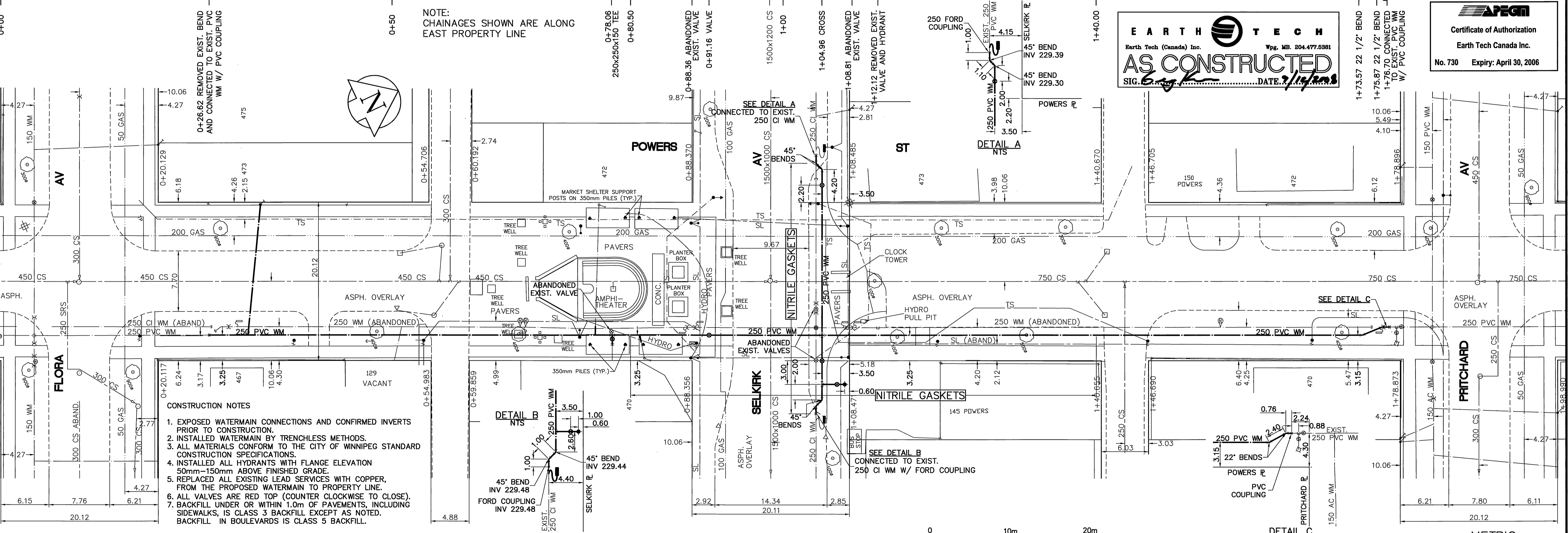
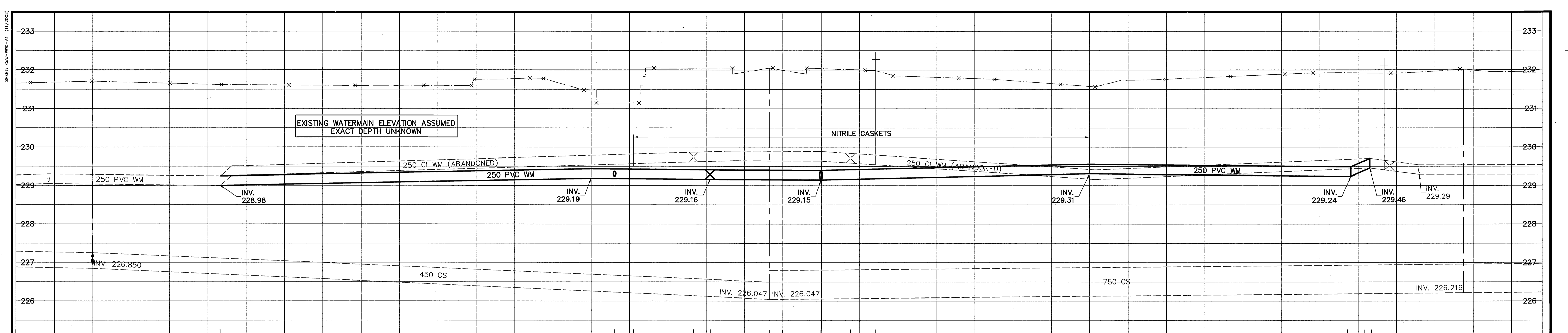
SELKIRK AVENUE STREETSCAPING PROJECT

DETAILS I

FIELD BOOK  
PLAN NO.







**EARTH TECH**  
Earth Tech (Canada) Inc. Wpg. MB. 204.477.5381

**AS CONSTRUCTED**  
SIG. *[Signature]* DATE: 7/14/2005

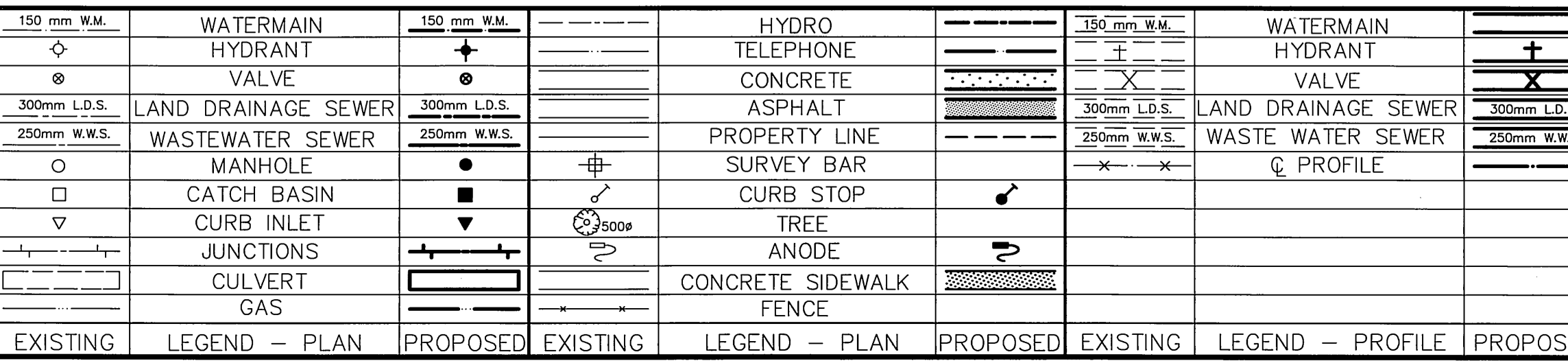
**AFPM**  
Certificate of Authorization  
Earth Tech Canada Inc.  
No. 730 Expiry: April 30, 2006

**MATERIAL LIST**  
CONTRACTOR: BEAVER SEWER AND WATER SERVICES LTD

- 250mm&150mm WATERMAIN-NORTHERN DR-18  
AWWA C900 PVC PIPE  
250mm COUPLING-FORD  
250mm FITTINGS-IPEX FABRICATED PVC C907  
150mm FITTINGS-IPEX BLUEBRUTE C907  
PIPE RESTRAINTS-WDVB WD57  
250mm AND 150mm GATE VALVES-MUELLER  
HYDRANT-MUELLER, CENTURY  
VALVE BOX-WDVB
- WATER SERVICES  
19mm COPPER-WOLVERINE TYPE K NSF-61  
CURB STOP-MUELLER MARK II ORISEAL  
CORPORATION STOP-MUELLER  
UNION-MUELLER  
CURB STOP BOX-MINNIAPOLIS STYLE  
ANODE-INTERPROVINCIAL 24lb

ADDRESS	NATURE OF SERVICE	DISTANCE SC TO PROPERTY	SIZE	MATERIAL	POSITION OF SC (curb stop)	POSITION OF CC (corp)	COMMENTS:
470 SELKIRK AV	COMMERCIAL	0.3 m	1 in 25 mm	COPPER	Long: 6.1 m S of SL SELKIRK BLDG Short: 6.1 m S of NL BLDG	Long: 6.7 m S of SL SELKIRK Short: 0.6 m S of SL SELKIRK	RECONNECTED - UNION 0.9m TO CC
470 SELKIRK AV	FIRE/COMM.		6 in 150 mm	PVC	Long: 10.2 m S of SL SELKIRK HOUSE Long: 13.1 m N of NL FLORA Short: 10.2 m S of NL FLORA Short: 13.0 m N of SL BLDG	Long: 10.2 m S of SL SELKIRK Long: 11.5 m N of NL FLORA Short: 10.2 m S of SL SELKIRK Short: 1.6 m N of SL SELKIRK	RECONNECTED RENEWED TO PROPERTY
475 FLORA AV	RESIDENTIAL	0.3 m	3/4 in 19 mm	COPPER			

ADDRESS	NATURE OF SERVICE	DISTANCE SC TO PROPERTY	SIZE	MATERIAL	POSITION OF SC (curb stop)	POSITION OF CC (corp)	COMMENTS:
150 POWERS ST	COMMERCIAL	0.5 m	3/4 in 19 mm	COPPER	Long: 29.3 m S of SL Pritchard Bldg Short: 3.7 m N of SL Pritchard Bldg	Long: OPP of SC Short: OPP of SC	ABANDONED
145 POWERS ST	FIRE/DOM.	4.0 m	6 in 150 mm	DI	Long: 23.2 m E of EL POWERS Bldg Short: 4.6 m W of EL POWERS Bldg	Long: OPP of SC Short: OPP of SC	SERVICED OFF SELKIRK
129 POWERS ST	RESIDENTIAL	0.3 m	3/4 in 19 mm	COPPER	Long: 30.2 m N of NL FLORA Short: 3.5 m S of NL FLORA	Long: 0.9 m N of SC Short: 0.9 m N of SC	ABANDONED



**LOCATION APPROVED UNDERGROUND STRUCTURES**

SUPV. U/G STRUCTURES COMMITTEE DATE

NOTE:  
LOCATION OF UNDERGROUND STRUCTURES AS SHOWN ARE BASED ON THE BEST INFORMATION AVAILABLE. BUT NO GUARANTEE IS GIVEN THAT ALL EXISTING UTILITIES ARE SHOWN OR THAT THE GIVEN LOCATIONS ARE EXACT. CONFIRMATION OF EXISTENCE AND EXACT LOCATION OF ALL SERVICES MUST BE OBTAINED FROM THE INDIVIDUAL UTILITIES BEFORE PROCEEDING WITH CONSTRUCTION.

B.M. 26-020 N.W. Cor. SELKIRK Ave. and POWERS St., Brass Plug in Conc. Pile, 2.4 m E. of W.L. SELKIRK Ave. & 0.3 ELEV. 232.072 m N. of N.L. of SELKIRK Ave.

NO.	REVISIONS	DATE	BY
1	AS CONSTRUCTED	07/01/22	GSK
0	ISSUED FOR TENDER	05/06/16	GSK
A	ISSUED FOR REVIEW	05/06/13	GSK

**EARTH TECH**  
ATYCO INTERNATIONAL LTD. COMPANY  
Earth Tech (Canada) Inc. Winnipeg, Manitoba 204.477.5381

DESIGNED BY: GSK CHECKED BY: KWF  
DRAWN BY: MAF APPROVED BY: [Signature]  
HOR. SCALE: 1:250 RELEASED FOR CONSTRUCTION BY: K. ZUREK  
VERTICAL SCALE: 1:50 DATE: 05/06/16

ENGINEER'S SEAL  
ORIGINAL SIGNED BY: K.W. FITCHETT  
JUNE 16/05  
CONSULTANT DRAWING NO. 85539-C02

**THE CITY OF WINNIPEG**  
Winnipeg WATER AND WASTE DEPARTMENT

**2005 WATERMAIN RENEWALS CONTRACT 10**

POWERS STREET  
FLORA AVENUE TO  
PRITCHARD AVENUE

SHEET 2 OF 16  
CITY DRAWING NUMBER D-8765