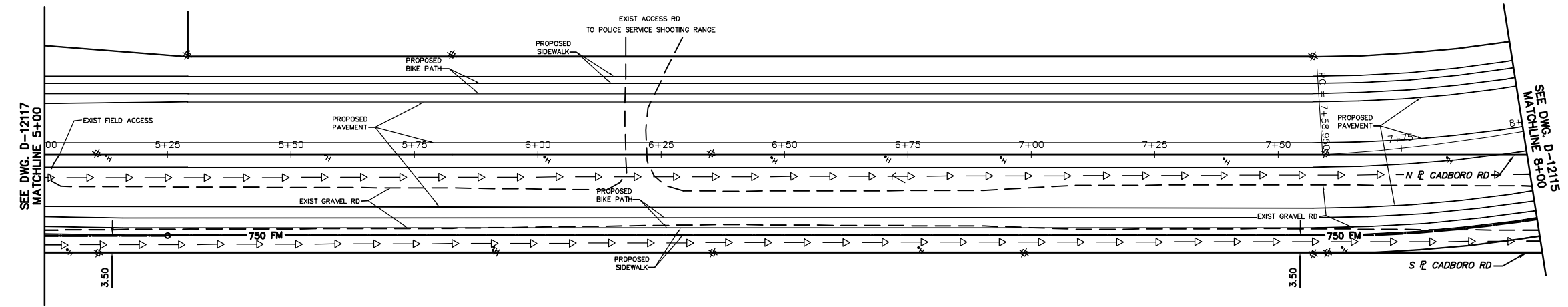


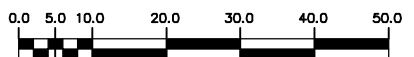
NOTE: FEEDERMAIN PIPE LENGTHS SHOWN ARE ALONG  $\phi$  OF PROPOSED FEEDERMAIN PIPE

NOTE: CHAINAGES SHOWN ARE ALONG  $\phi$  OF PROPOSED BISON DR

FUTURE BISON DRIVE



NOTE: FEEDERMAIN TO BE INSTALLED IN OPEN CUT TRENCH



**METRIC**  
WHOLE NUMBERS INDICATE MILLIMETRES  
DECIMALIZED NUMBERS INDICATE METRES  
NOTE: ALL VALVES TO BE INSTALLED COUNTERCLOCKWISE TO CLOSE

**WARNING**  
IF POWER EQUIPMENT OR EXPLOSIVES ARE TO BE USED FOR EXCAVATION ON THIS PROJECT THE CONTRACTOR MUST:  
1) NOTIFY THE GAS COMPANY OF THE PROPOSED LOCATION OF EXCAVATION.  
2) TAKE PRECAUTION TO AVOID DAMAGE TO GAS COMPANY INSTALLATIONS.  
SEE PROVINCIAL REGULATION 210/72 FOR DETAILS

200 WM	WATERMAIN	200 WM	SL, HYDRO	150 WM	WATERMAIN	150 WM
+	HYDRANT	+	MTS	+	HYDRANT	+
⊙	VALVE	⊙	TRAFFIC SIGNALS	⊙	VALVE	⊙
525 LDS	LAND DRAINAGE SEWER	525 LDS	50 GAS	300 LDS	LAND DRAINAGE SEWER	300 LDS
375 WWS	WASTEWATER SEWER	375 WWS	250 WWS	250 WWS	WASTEWATER SEWER	250 WWS
○	MANHOLE	●	* * * *	×	☉	PROFILE
□	CATCH BASIN	■	* H * T	—	—	GROUND ABOVE PIPE
▽	CURB INLET	▽	○	—	—	☉ DITCH (NORTH & WEST)
∇	REDUCER	∇	—	—	—	☉ DITCH (SOUTH & EAST)
X	COUPLER	X	—	—	—	☉ GUTTER (NORTH & WEST)
⊕	ANODE	⊕	—	—	—	☉ GUTTER (SOUTH & EAST)
EXISTING	LEGEND-PLAN	PROPOSED	EXISTING	LEGEND-PLAN	PROPOSED	EXISTING
EXISTING	LEGEND-PROFILE	PROPOSED	EXISTING	LEGEND-PROFILE	PROPOSED	EXISTING

LOCATION APPROVED UNDERGROUND STRUCTURES

SUPV. U/G STRUCTURES COMMITTEE DATE

NOTE:  
LOCATION OF UNDERGROUND STRUCTURES AS SHOWN ARE BASED ON THE BEST INFORMATION AVAILABLE BUT NO GUARANTEE IS GIVEN THAT ALL EXISTING UTILITIES ARE SHOWN OR THAT THE GIVEN LOCATIONS ARE EXACT. CONFIRMATION OF EXISTENCE AND EXACT LOCATION OF ALL SERVICES MUST BE OBTAINED FROM THE INDIVIDUAL UTILITIES BEFORE PROCEEDING WITH CONSTRUCTION.

**CITY OF WINNIPEG**  
WATER AND WASTE ENGINEERING DIVISION

DESIGNED BY DB CHECKED BY KZ  
DRAWN BY WKT APPROVED BY KZ

HOR. SCALE 1:500  
VERTICAL 1:50

DATE 2010 06 15

ENGINEER'S SEAL  
ORIGINAL MYLAR SIGNED BY  
K.R. ZUREK  
10/06/15

**THE CITY OF WINNIPEG**  
WATER AND WASTE DEPARTMENT

2010 FEEDERMAIN INSTALLATION AND ASSOCIATED WORKS  
BISON DRIVE  
1491 m W OF WAVERLEY STREET TO 1191 m W OF WAVERLEY STREET

SHEET 5 OF 10  
CITY DRAWING NUMBER  
D-12116